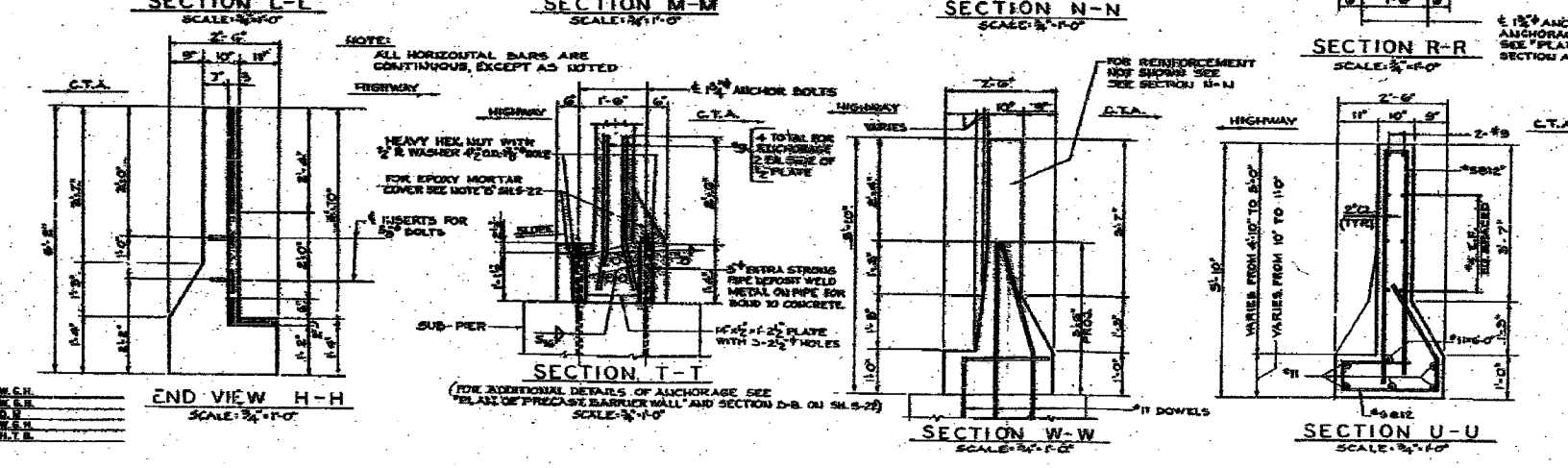
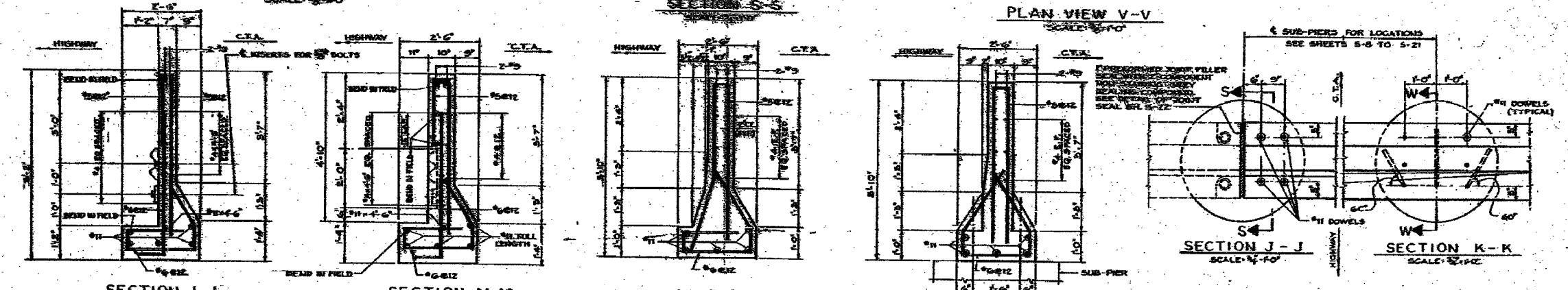
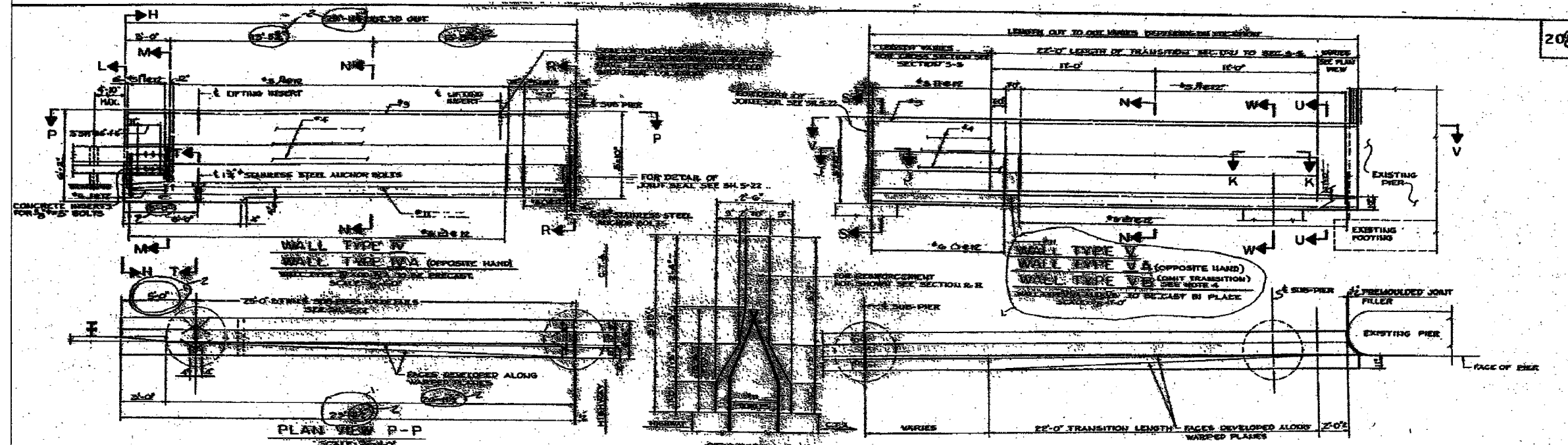


F.A.I.	SECTION	COUNTY	TOTAL SHEETS	SHEET NO.
94/90	*	COOK	598	434
STA. 2596+00		TO STA. 2602+00		
FED. ROAD DIST. NO.		ILLINOIS	FED. AID PROJECT	
62302		* (1818, ETC., 2324.6-1PJR-9)		



NOTE:  
ALL HORIZONTAL BARS ARE CONTINUOUS, EXCEPT AS NOTED

- NOTES:
1. CONCRETE FOR PRECAST AND CAST IN PLACE BARRIER WALLS SHALL BE FC-3000.
  2. ALL CONCRETE SHALL BE CLASS X MODIFIED.
  3. FOR ANCHOR BOLT AND SUB-PIER DETAILS AND SUPPLEMENTARY NOTES AND DETAILS SEE SH. S-22
  4. WALL TYPE X8 SHALL HAVE HIGHWAY FACE SAME AS WALL TYPE I BUT SHALL BE CAST IN PLACE.

CITY OF CHICAGO  
DEPARTMENT OF PUBLIC WORKS  
BUREAU OF ENGINEERING  
DAN RYAN RAPID TRANSIT  
MEDIAN PREPARATION AND FENCING  
CONTRACT DR-8  
BARRIER WALL DETAILS-2

SCALE: AS NOTED  
APRIL, 1968  
SHEET NO. 23 OF 211 SHEETS

REVISIONS	
NAME	DATE

ILLINOIS DEPARTMENT OF TRANSPORTATION  
F.A.I. 94/90 (DAN RYAN EXPRESSWAY)  
31ST STREET TO 71ST STREET  
SB EXPRESS LANE RECONSTRUCTION  
EXISTING BARRIER WALL PLANS  
AT CTA STATIONS

SCALE: N.T.S.  
DATE: 01/07/05

DRAWN BY: MTR  
CHECKED BY: BLU

FOR INFORMATION ONLY

BOWMAN, BARRETT & ASSOCIATES INC.  
CONSULTING ENGINEERS  
Chicago, Illinois  
312.228.0100  
www.bbainc.com

I:\66020\CHICAGO\STRUCT\RES\CTA\_Barr\AS-BUILT\66020\SD-10\BARRIER-2.dwg 6/24/2005 10:58:41 AM