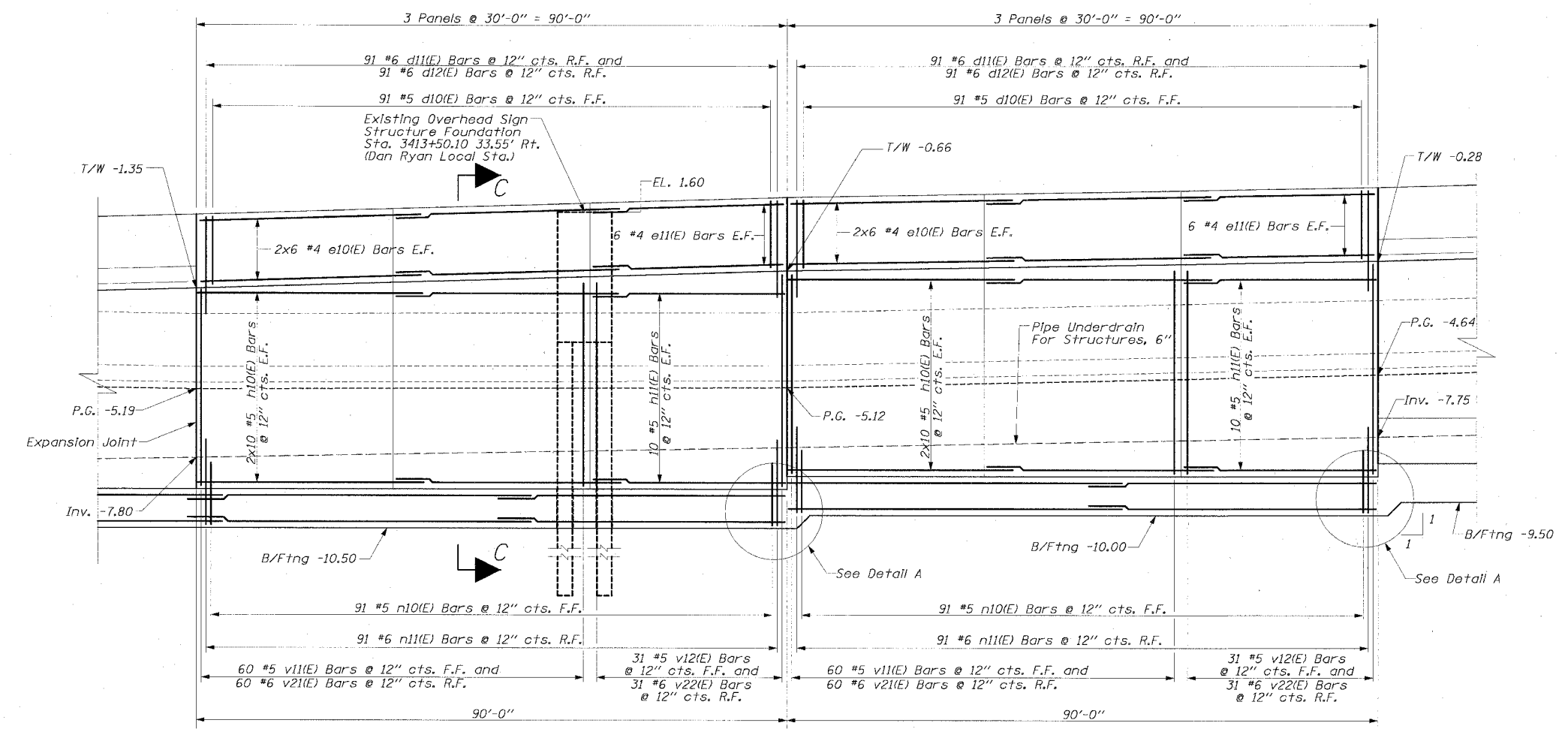
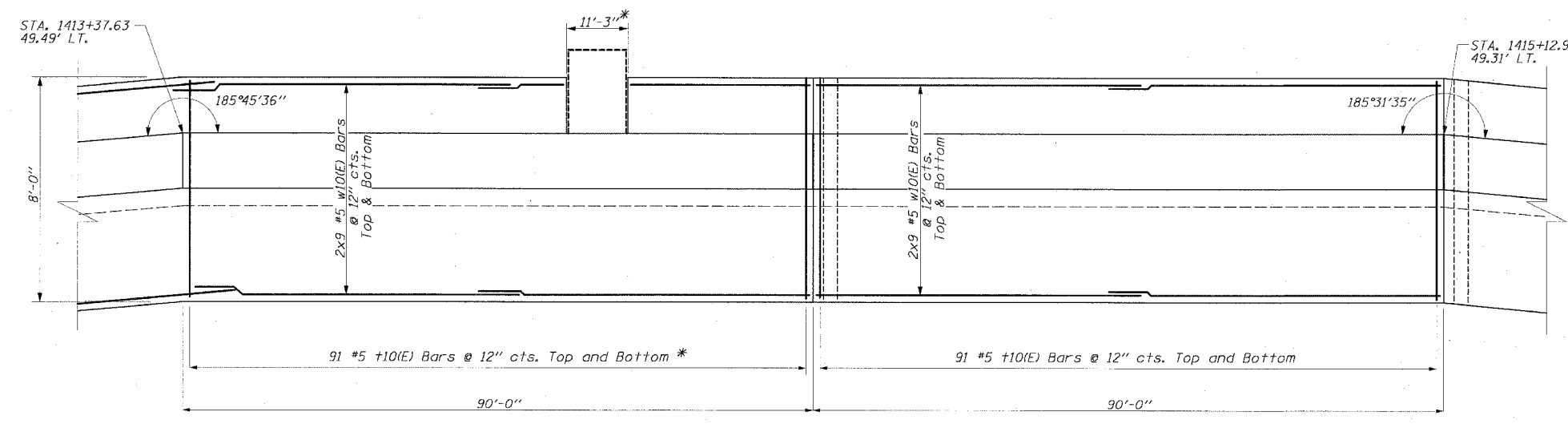


F.A.I. RTE.	SECTION	COUNTY	TOTAL SHEETS	SHEET NO.
94/90		COOK	598	439
STA.		TO STA.		
62302		1818, ETC, 2324.6-1PR-9		

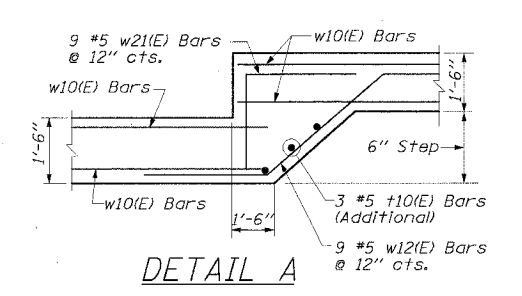


ELEVATION



FOOTING PLAN

\*Cut bars as needed in field to clear Existing Overhead Sign Foundation. Contractor to verify location in field.



DETAIL A

**LEGEND:**  
 B/Ftng = Bottom Of Footing Elev.  
 T/W = Top Of Wall Elev.  
 P.G. = Proposed Ground Elev.  
 SSSJ-22 Soil Boring Location

REVISIONS	
NAME	DATE

ILLINOIS DEPARTMENT OF TRANSPORTATION  
 F.A.I. 94/90 (DAN RYAN EXPRESSWAY)  
 31ST STREET TO 71ST STREET  
 SB EXPRESS LANE RECONSTRUCTION  
 RETAINING WALL SEL  
 GENERAL PLAN AND ELEVATION  
 SB STA. 1416+88.18 TO STA. 1421+97.41  
 STRUCTURE NO. NONE  
 SCALE: 1" = 20'  
 DATE: 07/1/05  
 DRAWN BY: ABW  
 CHECKED BY: EL

**Edwards AND Kelcey**  
 ONE NORTH FRANKLIN  
 CHICAGO, IL 60606  
 PHONE: (312) 251-3000  
 FAX: (312) 251-3015  
 WEB: WWW.EKCORP.COM

I:\030019\035\Con 148\5\CADD\5\Retain\Wall\Plan\SEL-Footer\wall-05.dwg  
 06/24/2005 10:42:42 PM