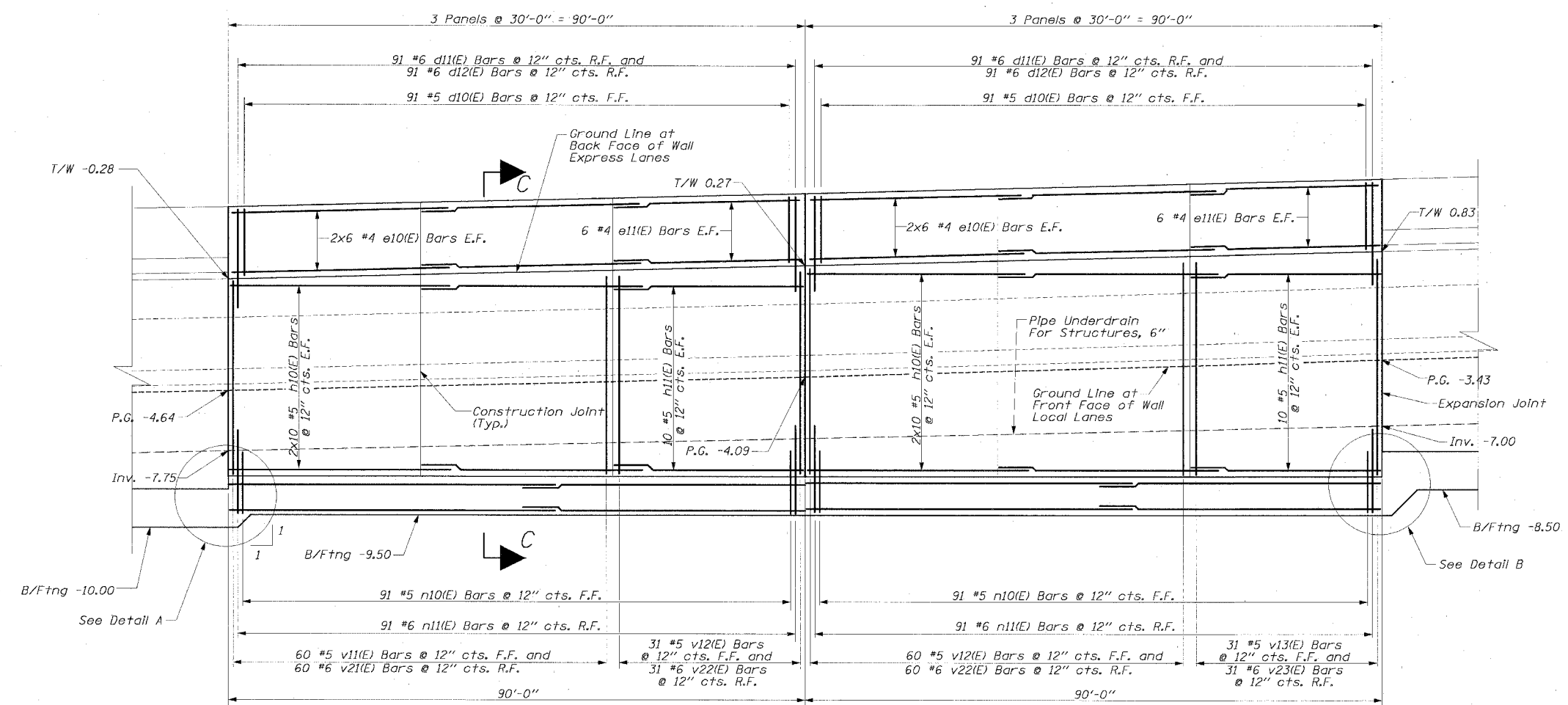
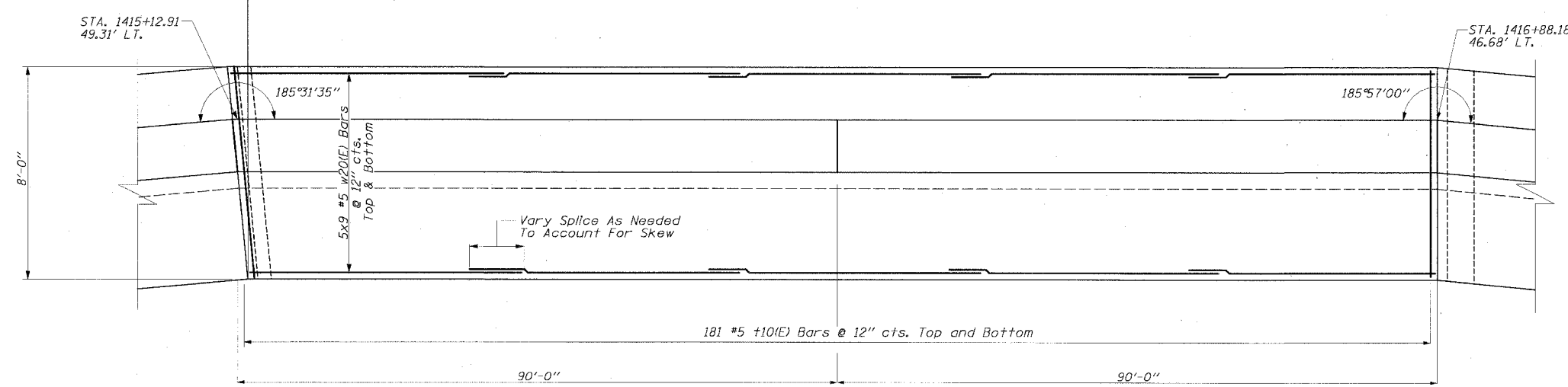


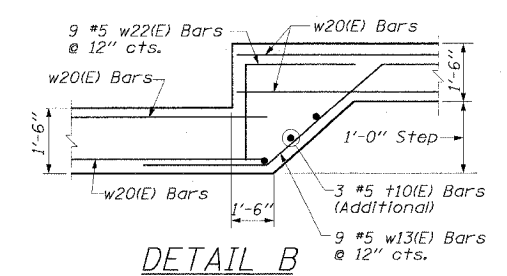
F.A.I. RTE.	SECTION	COUNTY	TOTAL SHEETS	SHEET NO.
94/90		COOK	598	440
STA.	TO STA.			
FED. ROAD DIST. NO.	ILLINOIS FED. AID PROJECT			
62302	• (1818, ETC, 2324.6-1PR-9			



ELEVATION



FOOTING PLAN



DETAIL B

**LEGEND:**  
 B/Ftng = Bottom Of Footing Elev.  
 T/W = Top Of Wall Elev.  
 P.G. = Proposed Ground Elev.  
 SSS = Soil Boring Location  
 SSS-22

REVISIONS	
NAME	DATE

ILLINOIS DEPARTMENT OF TRANSPORTATION  
 F.A.I. 94/90 (DAN RYAN EXPRESSWAY)  
 31ST STREET TO 71ST STREET  
 SB EXPRESS LANE RECONSTRUCTION  
 RETAINING WALL SEL  
 GENERAL PLAN AND ELEVATION  
 SB STA. 1416+88.18 TO STA. 1421+97.41  
 STRUCTURE NO. NONE  
 SCALE: 1" = 40'  
 DATE: 07/1/05  
 DRAWN BY: ABW  
 CHECKED BY: EL

**Edwards AND Kelcey**  
 ONE NORTH FRANKLIN  
 CHICAGO, IL 60606  
 PHONE: (312) 251-3000  
 FAX: (312) 251-3015  
 WEB: WWW.EKCORP.COM

I:\0300\94035\Con 148\5\ACAD\5\Retain\94-90\Plan\SEL-6.dwg  
 05/24/2005 12:43:14 PM