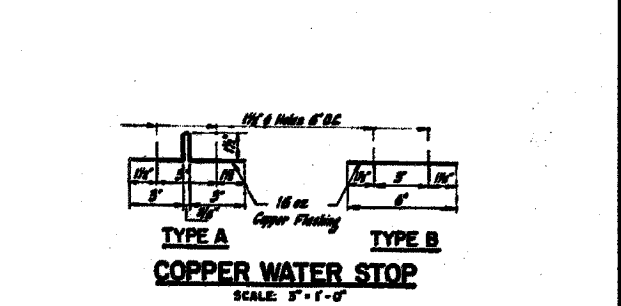
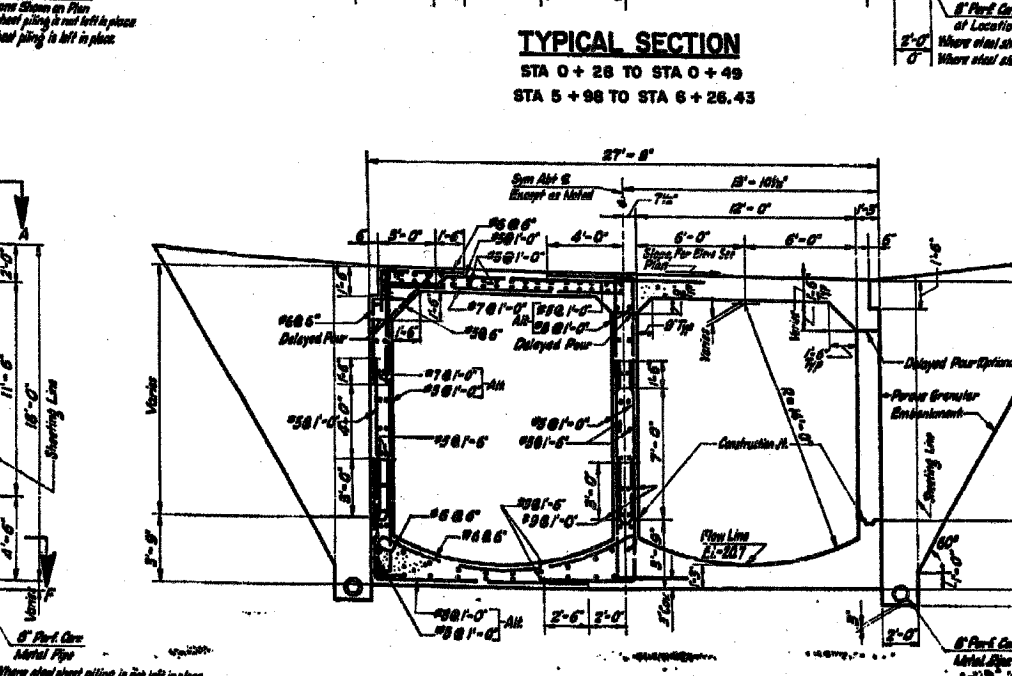
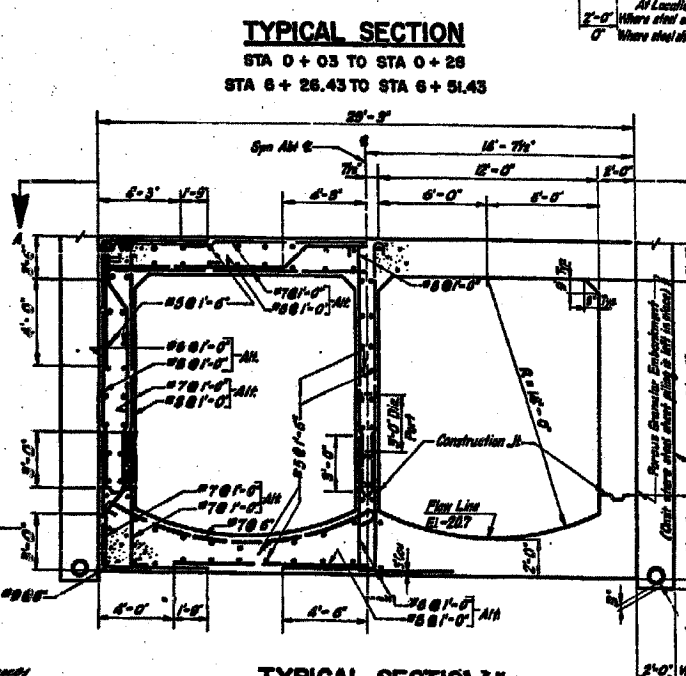
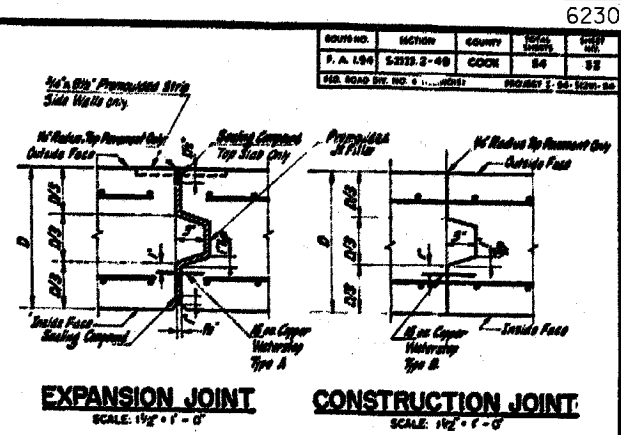
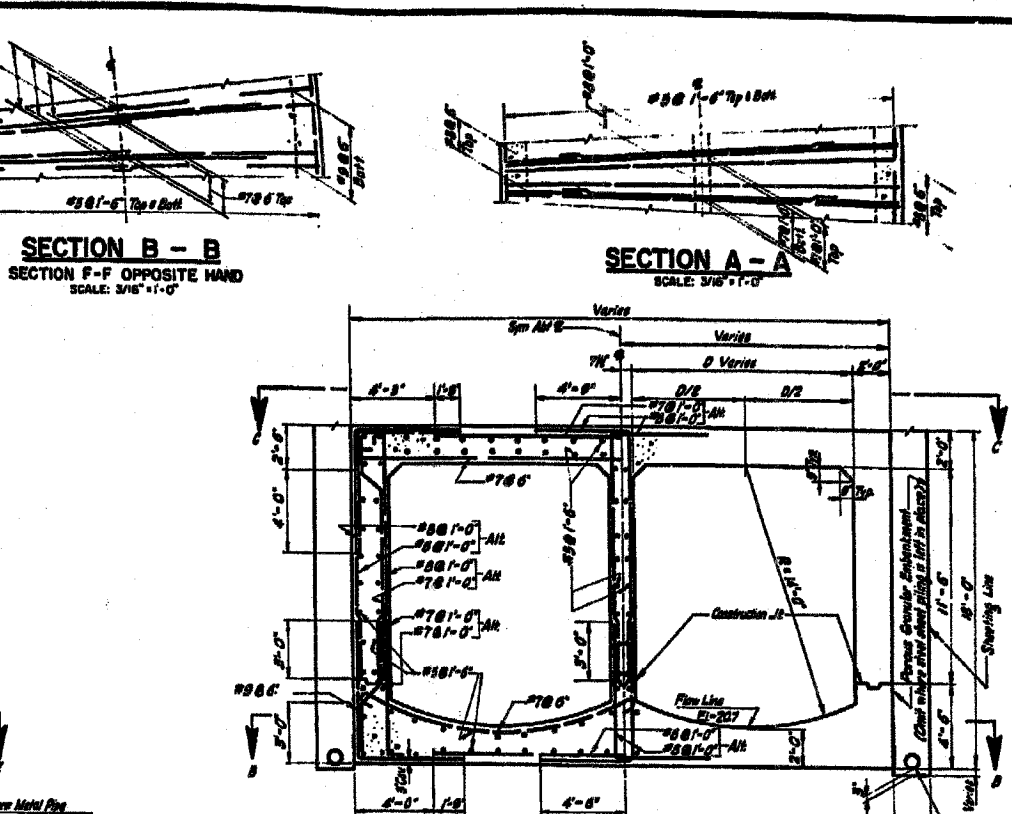
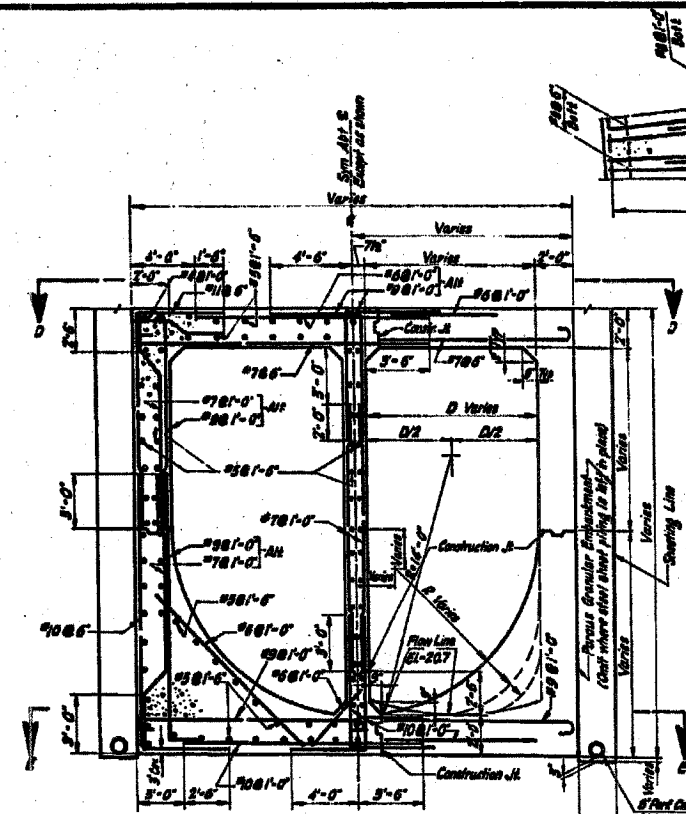


F.A.I.	SECTION	COUNTY	TOTAL SHEETS	SHEET NO.
94/90	*	COOK	598	486
STA.	TO STA.			
FED. ROAD DIST. NO.	ILLINOIS FED. AID PROJECT			
62302	*(1818, ETC, 2324.6-1)PR-9			

CONTRACT NO.	SECTION	COUNTY	TOTAL SHEETS	SHEET NO.
F.A. 194	2324.2-4B	COOK	54	53
FED. ROAD DIST. NO.	PROJECT: 94-1001-03			



- NOTES**
1. Minimum required bearing pressure = 5,000 psf.
 2. Foundation Soils which are wet, disturbed, or which do not satisfy the minimum required bearing pressure shall be removed and the excavation backfilled with Class X Concrete as directed by the Engineer.
 3. Cover = 2'; except as noted.
 4. Continuous reinforcement shall be Lapped 24" Dia minimum, except as noted.
 5. For Sections C-C, D-D & E-E, see sht S-2.
 6. Where a delayed pour is shown there shall be a 2 hour maximum delay between the pouring of the walls and the top slab.
 7. Cast Expansion Joints in bottom slab.
 8. For Part Details see sht S-2.
 9. For Excavation & Backfill Limits, and Cofferdam Limits see sht S-3.

CITY OF CHICAGO
DEPARTMENT OF PUBLIC WORKS
BUREAU OF ENGINEERING
SOUTH ROUTE SUPERHIGHWAY
SECTION 5-2324.2-4B
W. PERSHING ROAD BRIDGE
SEWER TYPICAL SECTIONS

SHEET CUL-12 OF CUL-14

REVISIONS	DATE
NAME	

ILLINOIS DEPARTMENT OF TRANSPORTATION
F.A.I. 94/90 (DAN RYAN EXPRESSWAY)
31ST STREET TO 71ST STREET
SB EXPRESS LANE RECONSTRUCTION
MWRD CULVERT, N. OF 39TH ST.,
COOK COUNTY, S.N. 016-2625
EXISTING TYPICAL SECTIONS

SCALE: NTS
DATE: 07/07/05

DRAWN BY: BOC
CHECKED BY: BLU

FOR INFORMATION ONLY

BOWMAN, BARRETT & ASSOCIATES INC.
CONSULTING ENGINEERS
Chicago, Illinois
312.228.0100
www.bbainc.com

6/24/2005 12:29:03 PM