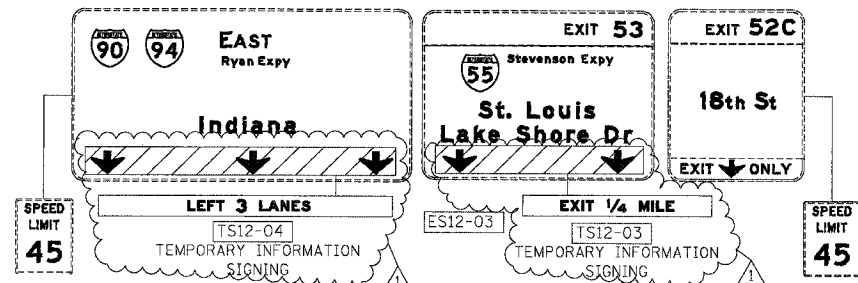
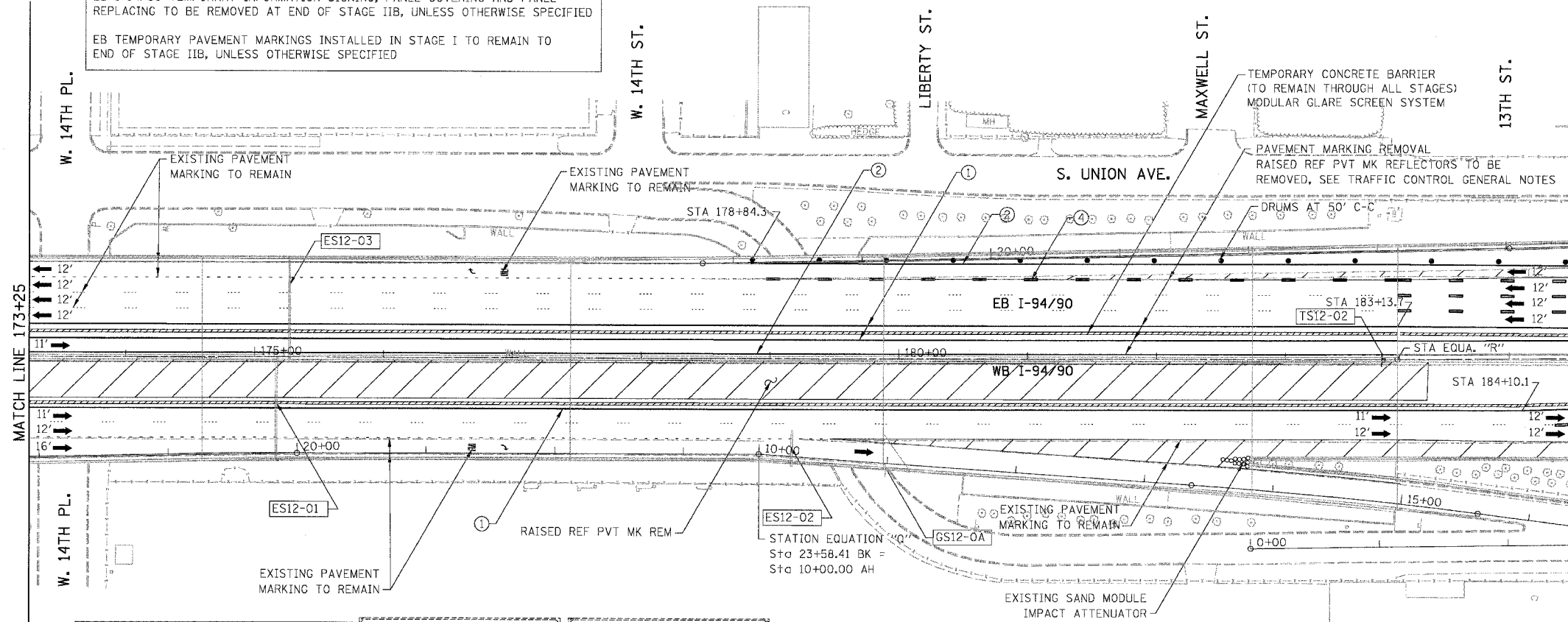


| | | | | |
|---------------------|-----------|------------------|--------------|-----------|
| F.A.I. | SECTION | COUNTY | TOTAL SHEETS | SHEET NO. |
| 94/90 | 2003-028F | COOK | 419 | 40 |
| STA. | | TO STA. | | |
| FED. ROAD DIST. NO. | ILLINOIS | FED. AID PROJECT | | |
| 62580 | | | | |



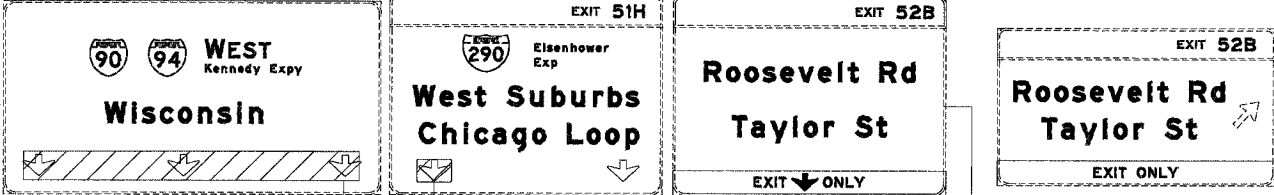
NOTE:
 EB I-94/90 TEMPORARY INFORMATION SIGNING, PANEL COVERING AND PANEL REPLACING TO BE REMOVED AT END OF STAGE IIB, UNLESS OTHERWISE SPECIFIED
 EB TEMPORARY PAVEMENT MARKINGS INSTALLED IN STAGE I TO REMAIN TO END OF STAGE IIB, UNLESS OTHERWISE SPECIFIED

STATION EQUATION "R"
 Sta 183+87.10 BK =
 Sta 183+13.36 AH



- LEGEND**
- WORK ZONE
 - DIRECTION OF TRAFFIC
 - DRUM OR BARRICADE TYPE II WITH STEADY BURN LIGHT
 - IMPACT ATTENUATORS, TEMPORARY (NON-REDIRECTIVE), TEST LEVEL 3
 - BARRICADE TYPE III
 - TEMPORARY CONCRETE BARRIER
 - ① LINE 4" (YELLOW EDGE LINE)
 - ② LINE 4" (WHITE EDGE LINE)
 - ③ LINE 4" (SKIP DASH, 6' SKIP - 2' DASH, WHITE)
 - ④ LINE 5" (SKIP DASH, 30' SKIP - 10' DASH, WHITE)
 - ⑤ LINE 8" (WHITE LINE)
 - ⑥ LINE 8" (SKIP DASH, 12' SKIP - 3' DASH, WHITE)
 - ⑦ LINE 12" (DIAGONAL, 30' C-C)
 - ⑧ LINE 12" (DIAGONAL, 500' C-C)
 - ⑨ LETTERS AND SYMBOLS
 - ESx-xx EXISTING OVERHEAD OR CANTILEVER SIGNS
 - GSx-xx EXISTING POST MOUNTED SIGNS
 - TSx-xx TEMPORARY SIGNS

NOTE:
 WB I-94/90 TEMPORARY INFORMATION SIGNING, PANEL COVERING AND PANEL REPLACING TO BE REMOVED AT END OF STAGE IA, UNLESS OTHERWISE SPECIFIED
 WB I-94/90 TEMPORARY PAVEMENT MARKINGS INSTALLED IN STAGE I TO REMAIN TO END OF STAGE IA, UNLESS OTHERWISE SPECIFIED



REMOVE AT END OF STAGE IIA
LEFT LANE
 TS12-01
 TEMPORARY INFORMATION SIGNING

COVER ARROW
 ES12-01

W1-4R
 W13-1
 ORANGE BACKGROUND
 BLACK LEGEND
 REMOVE AT
 END OF STAGE IIB

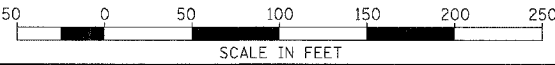
TS12-02
 GS12-0A

NOTE:
 ALL PAVEMENT MARKINGS ON THIS SHEET WILL BE EPOXY PAVEMENT MARKING, UNLESS OTHERWISE NOTED. MOT-12

| REVISIONS | | ILLINOIS DEPARTMENT OF TRANSPORTATION F.A.I. 94/90 (DAN RYAN EXPRESSWAY) NB DAN RYAN ELEVATED BRIDGE REPAIR FROM 15TH TO 28TH STREETS MAINTENANCE OF TRAFFIC PLAN - STAGE I STA. 173+25 TO STA. 184+51 |
|------------|--------|---|
| NAME | DATE | |
| ADDENDUM 1 | 9/6/05 | |
| | | |
| | | |
| | | |
| | | |
| | | |
| | | |
| | | |
| | | |

SCALE: 1"=50'
 DATE: 8/12/2005
 DRAWN BY: RA
 CHECKED BY: RS

BOWMAN, BARRETT & ASSOCIATES INC.
 CONSULTING ENGINEERS
 Chicago, Illinois
 312.228.0100
 www.bbainc.com



1/62580-0000-01/15/05 SHEET 5 OF 60 11/20/05