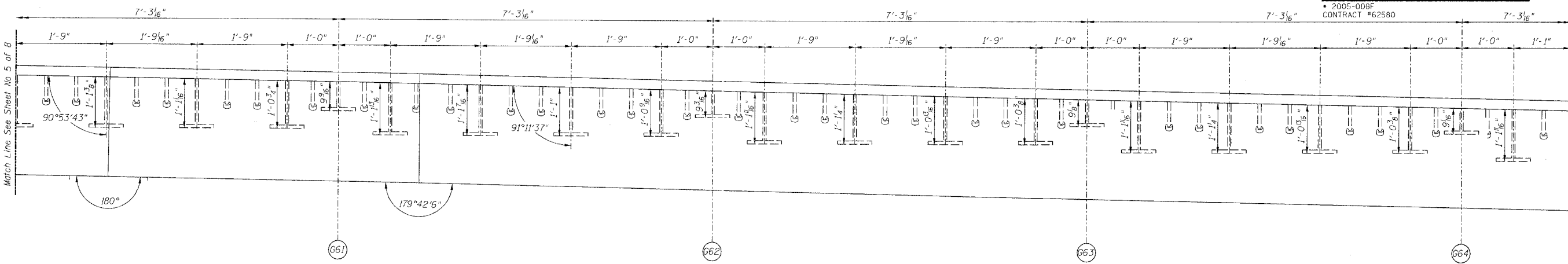


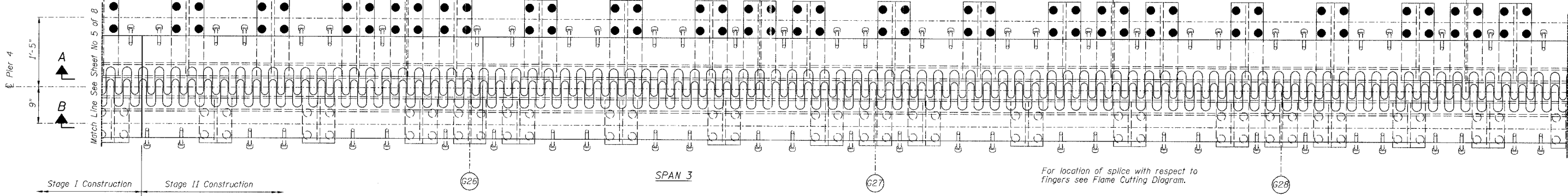
STATE OF ILLINOIS  
DEPARTMENT OF TRANSPORTATION

ROUTE NO.	SECTION	COUNTY	TOTAL SHEETS	SHEET NO.
FAI 90/94		COOK	419	192
FED. ROAD DIST. NO.	ILLINOIS	PROJECT		
2005-008F CONTRACT #62580				

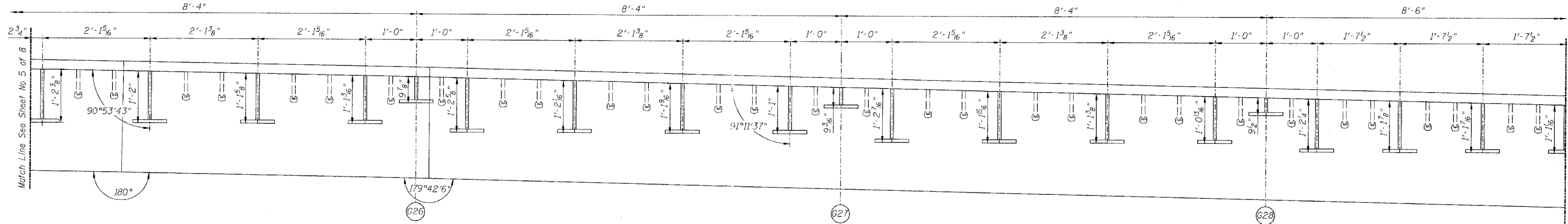
Sheet No 6  
of 8 Sheets



SECTION A-A



PLAN OF FINGER PLATE AT PIER 4 (NORTHBOUND)



SECTION B-B

PIER NO. 4

FINGER PLATE PLAN AND ELEVATION DETAILS

REVISIONS		STATE OF ILLINOIS DEPARTMENT OF TRANSPORTATION DIVISION OF HIGHWAYS		DRAWN BY DATE RLK 5/03
No.	DATE	INITIALS		CHECKED BY DATE SDS 5/03
1				BOOK NUMBER
2				PROJECT No.
3				4222-3
4				SHEET No.
5				
6				
7				
8				
9				
10				

Note:  
For optional splice detail see  
Flame cutting diagram on Sheet No. 4  
All dimensions, except stool heights  
are given along centerline of bearing.

9000 W. BRYAN MAWES AVENUE  
SUITE 304  
CHICAGO, ILLINOIS 60631  
312-714-6000  
FAX 312-714-0065

HOYER L.  
CHASTAIN  
& ASSOCIATES  
CONSULTING ENGINEERS