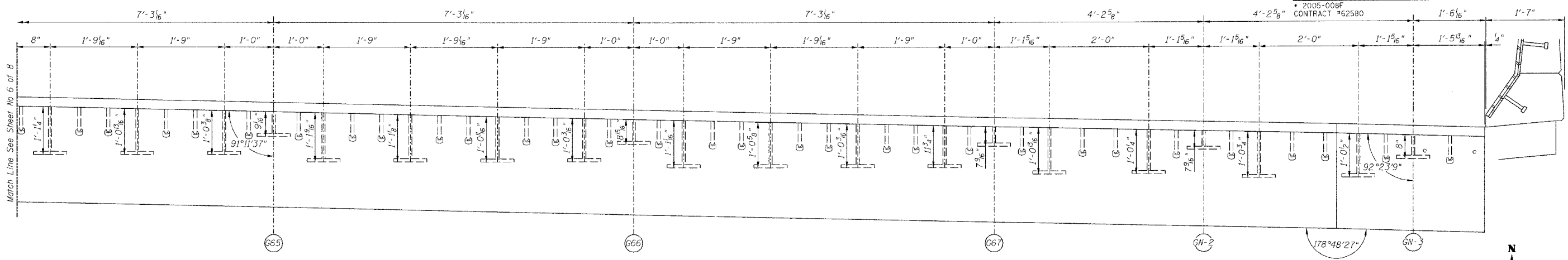


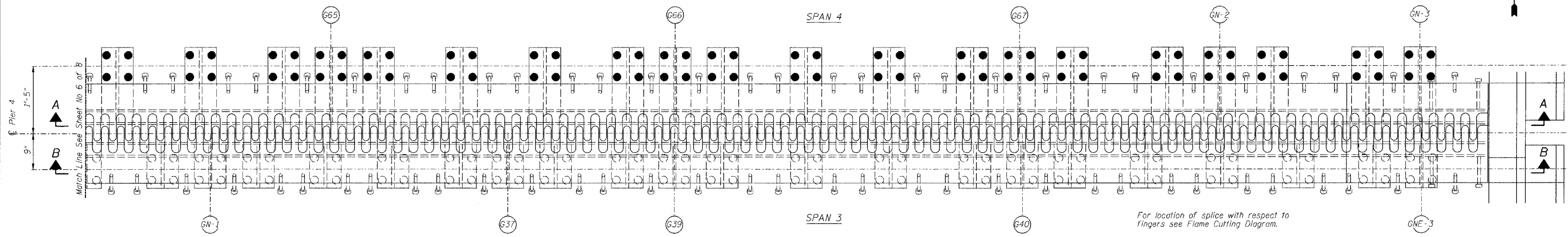
STATE OF ILLINOIS
DEPARTMENT OF TRANSPORTATION

ROUTE NO.	SECTION	COUNTY	TOTAL SHEETS	SHEET NO.
FAI 90/94		COOK	419	193
FED. ROAD DIST. NO.	ILLINOIS PROJECT			
2005-008F	CONTRACT #62580			

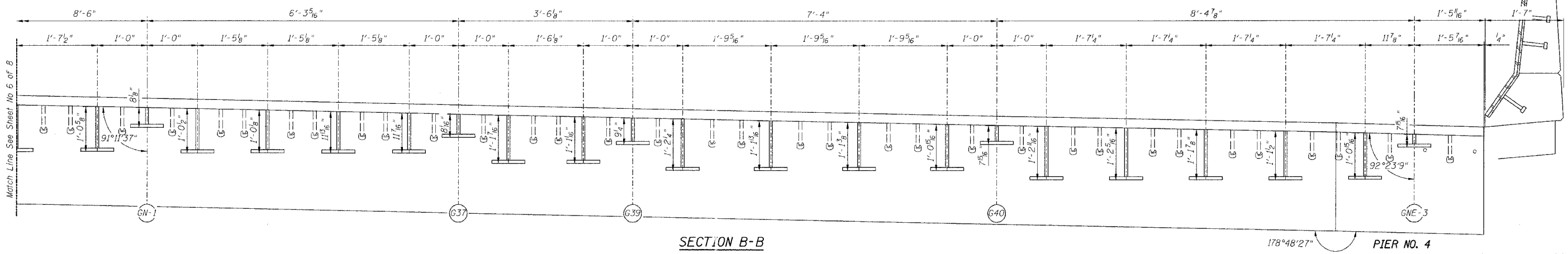
Sheet No 7
of 8 Sheets



SECTION A-A



PLAN OF FINGER PLATE AT PIER 4 (NORTHBOUND)



SECTION B-B

Note:
For optional splice detail see
flame cutting diagram on Sheet No. 4
All dimensions, except stool heights
are given along centerline of bearing.

REVISIONS		STATE OF ILLINOIS DEPARTMENT OF TRANSPORTATION DIVISION OF HIGHWAYS		DRAWN BY RLK	DATE 5/03
1	DATE	INITIALS		CHECKED BY SDS	DATE 5/03
2				BOOK NUMBER	
3				PROJECT NO.	4222-3
4				SHEET NO.	
5				FAI RTE 90/94 DAN RYAN EXPRESSWAY SN 016-1110 (NORTHBOUND) SEC 2005-008F COOK COUNTY	
6				HOMER L. CHASTAIN & ASSOCIATES CONSULTING ENGINEERS 8800 W. BURNHAM AVENUE SUITE 204 CHICAGO, ILLINOIS 60631 822-714-0000 FAX 312-714-0066	
7				178°48'27" PIER NO. 4 FINGER PLATE PLAN AND ELEVATION DETAILS	