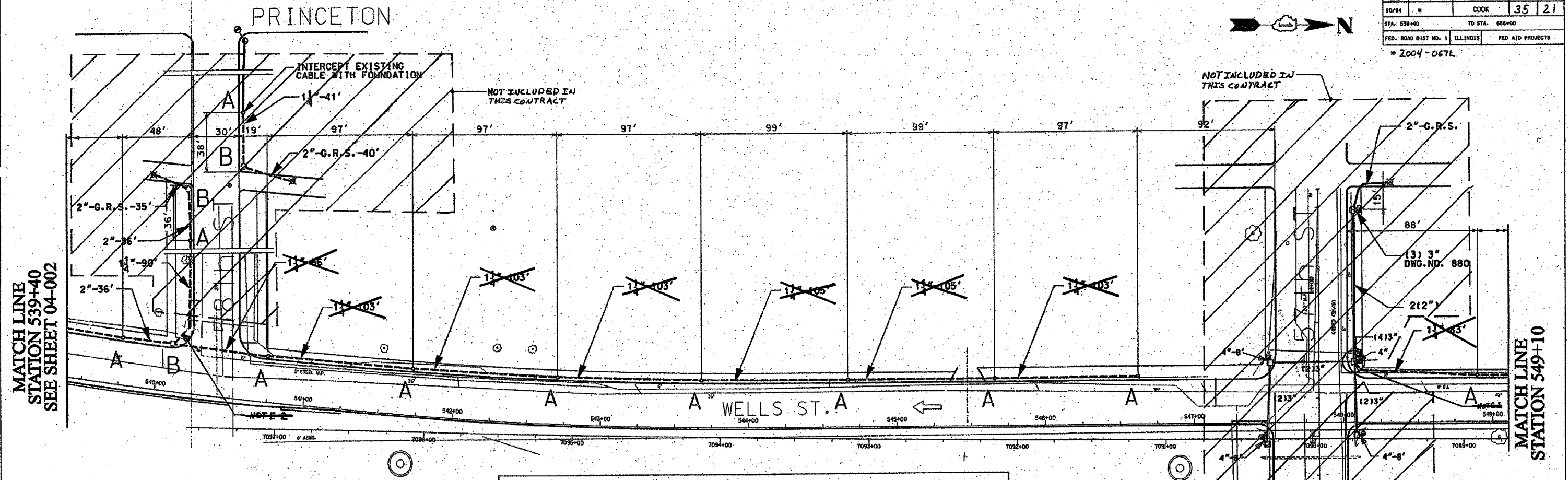


62806

F. & R. NO.	SECTION	COUNTY	TOTAL SHEETS	SHEET NO.
90/94	*	COOK	35	21
STA: 539+40	TO STA: 550+00			
FED. ROAD DIST. NO. 1	ILLINOIS	FED. AID PROJECTS		

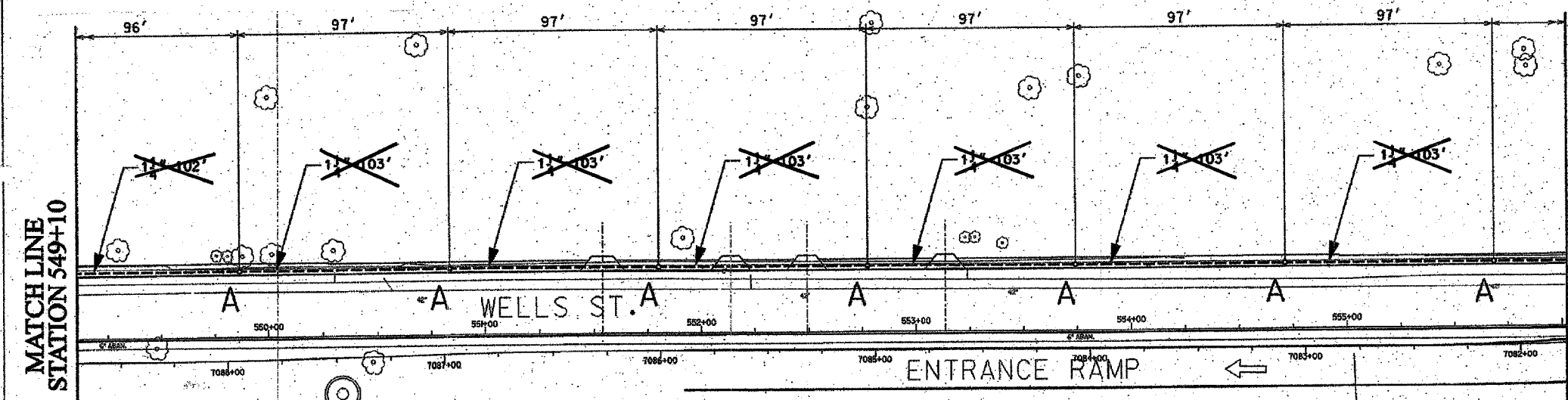
* 2004-067L



- 1" DIRECT BORED CONDUIT SCHEDULE #00 AS PER IDOT ARTICLE 810.03
- 2" DIRECT BORED CONDUIT SCHEDULE #00 AS PER IDOT ARTICLE 810.03
- 2" CONDUIT SCHEDULE #40 INSTALLED IN TRENCH AS PER IDOT ARTICLE 810.03
- 2" GALVANIZED RIGID STEEL ELBOW ON STRUCTURE
- 2" GALVANIZED RIGID STEEL CONDUIT INSTALLED IN TRENCH AS PER IDOT ARTICLE 810.03
- HAND HOLE - 30" x 36" WITH 24" FRAME AND COVER
- CONCRETE FOUNDATION - 5' x 20", 10" B.C., 1" ANCHOR RODS.

NOTES: CONTRACTOR IS TO INSTALL UNDERGROUND CONDUIT AND PULL ROPE BETWEEN FOUNDATIONS AS WELL AS PERFORM THE FOLLOWING WORK ITEMS ACCORDING TO BUREAU OF ELECTRICITY SPECIFICATIONS:

- "A" - INSTALL 20" x 5' FOUNDATION, 10" B.C., 1" ANCHOR RODS AS PER DRAWING NO. 565, 2' OFF FACE OF CURB, UNLESS NOTED OTHERWISE. BUILD FOUNDATIONS FLUSH WITH SIDEWALK SURFACE.
- "B" - INSTALL 30" HANDHOLE AS PER DRAWING NO. 867 WITH 24" FRAME AND COVER
- "D" - INSTALL BASE FOUNDATION AS PER DWG. 876 FOR STREET LIGHTING CONTROLLER. TO BE INSTALLED ON TRAFFIC SIGNAL CONTRACT



NOTES:

1. ROUTE PROPOSED CONDUIT RUN TO THE EXISTING MANHOLE OR HANDHOLE AS SHOWN. DRILL THE EXISTING MANHOLE OR HANDHOLE AND INSTALL PROPOSED CONDUIT THROUGH THE MANHOLE OR HANDHOLE WALL. SEE DRAWING SEE-2 FOR DETAILS.
2. PROVIDE A CONDUIT STOP AT MANHOLE EXTENDING TO ONE FOOT PAST THE LIMITS OF SIDEWALK REPLACEMENT. PROVIDE A CONDUIT CAP FOR THE CONDUIT STOP. THE CONDUIT CAP WILL BE INCLUDED IN THE UNIT PRICE FOR THE CONDUIT OR SPECIFIED TYPE AND DIAMETER, AND SEPARATE PAYMENT WILL BE MADE SEE IDOT CONTACT URL 62576 AND 62745 FOR LIMITS OF SIDEWALK REPLACEMENT.

FOR INSTALLATION PLAN SEE SHEET 04-017
FOR REMOVAL PLAN SEE SHEETS 04-024, 04-025.

CITY OF CHICAGO
DEPT. OF STREETS AND SANITATION
DIVISION OF ELECTRICAL ENGINEERING

DRAFTSMAN B. GARNSEY	CHIEF DRAFTSMAN ROBERT CARTER	ENGINEERS B. GARNSEY
SUPERVISING ENGINEER	ELEC. DESIGN ENGR.	
ENGINEER OF ELECTRICITY		
GENL. Supt. OF ELECTRICITY		
DEPUTY COMMISSIONER		

DWG. NO. 04-003
SCALE: 1" = 30'
DATE: February 11, 2005
DRAWN BY: B.T.G.
CHECKED BY: D.L.

Revised sheet 9/9/05.