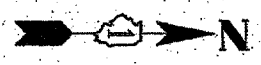
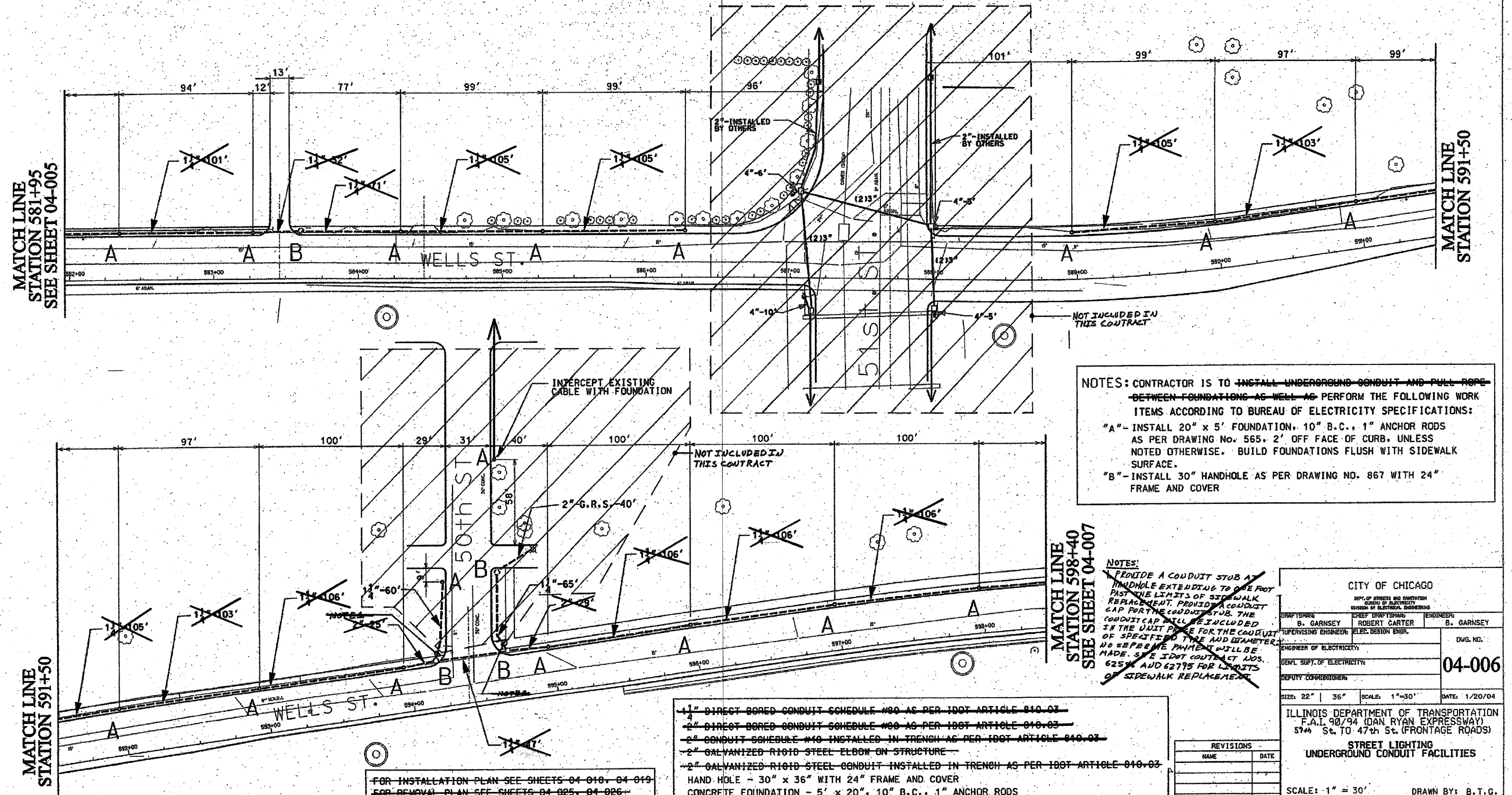


62806



F. A. RYE	SECTION	COUNTY	TOTAL SHEETS	SHEET NO
90/94	*	COOK	35	24
STA. 591+00	TO STA. 598+00			
FED. ROAD DIST. NO. 1	ILL. INDIS	FED AID PROJECTS		
* 2004-067L				



NOTES: CONTRACTOR IS TO INSTALL UNDERGROUND CONDUIT AND PULL ROPE BETWEEN FOUNDATIONS AS WELL AS PERFORM THE FOLLOWING WORK ITEMS ACCORDING TO BUREAU OF ELECTRICITY SPECIFICATIONS:

"A" - INSTALL 20" x 5' FOUNDATION, 10" B.C., 1" ANCHOR RODS AS PER DRAWING NO. 565, 2' OFF FACE OF CURB, UNLESS NOTED OTHERWISE. BUILD FOUNDATIONS FLUSH WITH SIDEWALK SURFACE.

"B" - INSTALL 30" HANDHOLE AS PER DRAWING NO. 867 WITH 24" FRAME AND COVER

NOTES:

~~PROVIDE A CONDUIT STUB A HANDHOLE EXTENDING TO ONE FOOT PAST THE LIMITS OF SIDEWALK REPLACEMENT. PROVIDE A CONDUIT CAP FOR THE CONDUIT STUBS. THE CONDUIT CAP SHALL BE INCLUDED IN THE UNIT PRICE FOR THE CONDUIT OF SPECIFIED SIZE AND DIAMETER. NO SEPERATE PRICE WILL BE MADE. SEE IDOT CONTRACT NOS. 6254 AND 62795 FOR LIMITS OF SIDEWALK REPLACEMENT.~~

- ~~1 1/2" DIRECT BORED CONDUIT SCHEDULE #00 AS PER IDOT ARTICLE 810.03~~
- ~~2" DIRECT BORED CONDUIT SCHEDULE #00 AS PER IDOT ARTICLE 810.03~~
- ~~2" CONDUIT SCHEDULE #10 INSTALLED IN TRENCH AS PER IDOT ARTICLE 810.03~~
- ~~2" GALVANIZED RIGID STEEL ELBOW ON STRUCTURE~~
- ~~2" GALVANIZED RIGID STEEL CONDUIT INSTALLED IN TRENCH AS PER IDOT ARTICLE 810.03~~
- HAND HOLE - 30" x 36" WITH 24" FRAME AND COVER
- CONCRETE FOUNDATION - 5' x 20", 10" B.C., 1" ANCHOR RODS

FOR INSTALLATION PLAN SEE SHEETS 04-018, 04-019
FOR REMOVAL PLAN SEE SHEETS 04-025, 04-026

CITY OF CHICAGO
DEPT. OF STREETS AND SANITATION
BUREAU OF ELECTRICITY
DIVISION OF ELECTRICAL ENGINEERING

DRAFTSMAN B. GARNSEY	CHIEF DRAFTSMAN ROBERT CARTER	ENGINEER B. GARNSEY
SUPERVISING ENGINEER	ELEC. DESIGN ENGR.	DWG. NO.
ENGINEER OF ELECTRICITY		04-006
GEN'L SUPT. OF ELECTRICITY		
DEPUTY COMMISSIONER		
SIZE: 22" x 36"	SCALE: 1"=30'	DATE: 1/20/04

ILLINOIS DEPARTMENT OF TRANSPORTATION
F.A.L. 90/94 (DAN RYAN EXPRESSWAY)
57th St. TO 47th St. (FRONTAGE ROADS)

STREET LIGHTING
UNDERGROUND CONDUIT FACILITIES

SCALE: 1" = 30' DRAWN BY: B.T.G.
DATE: February 11, 2005 CHECKED BY: O.L.

REVISIONS	
NAME	DATE

△ Revised sheet 9/9/05