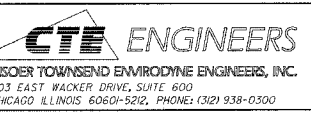
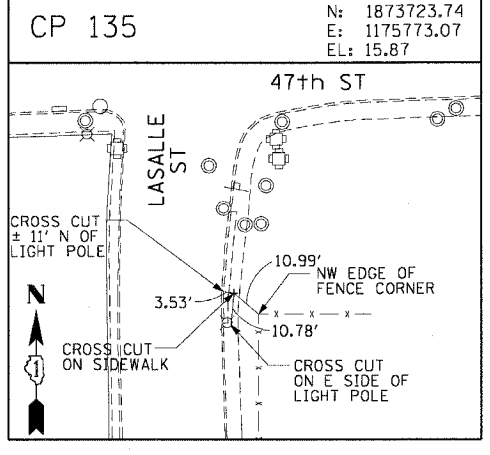
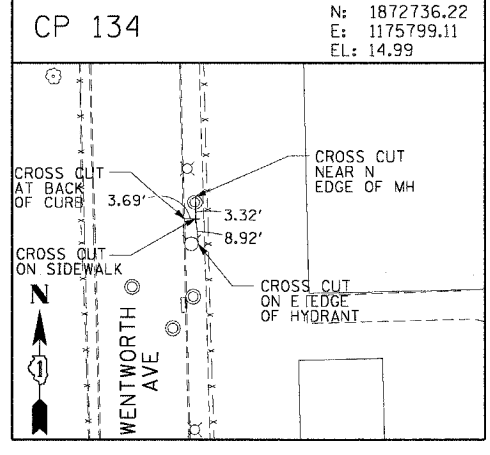
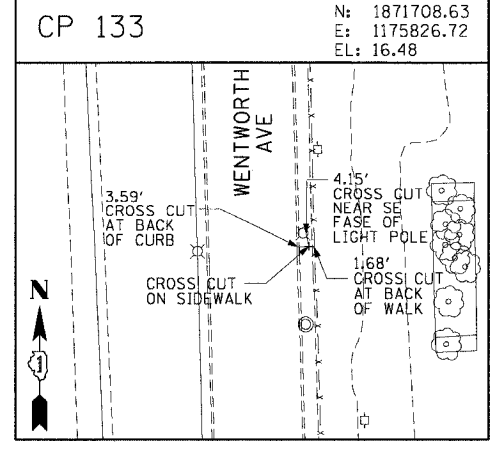
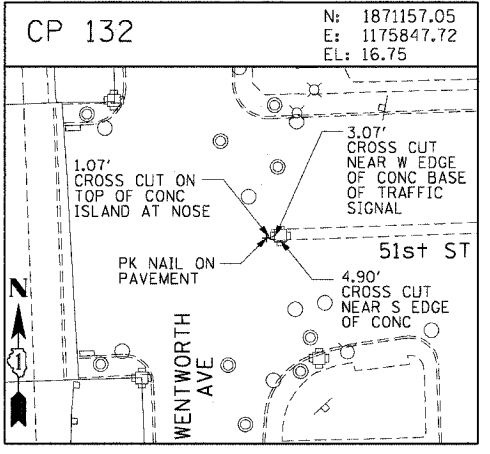
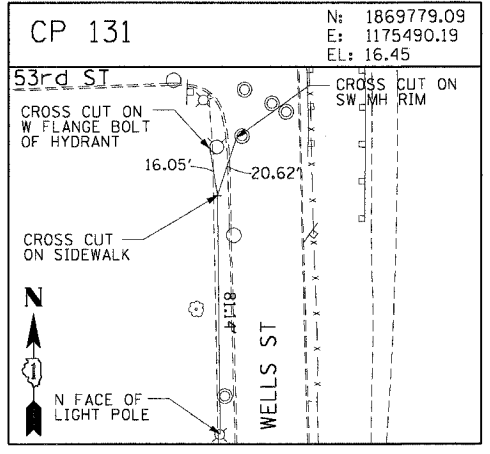
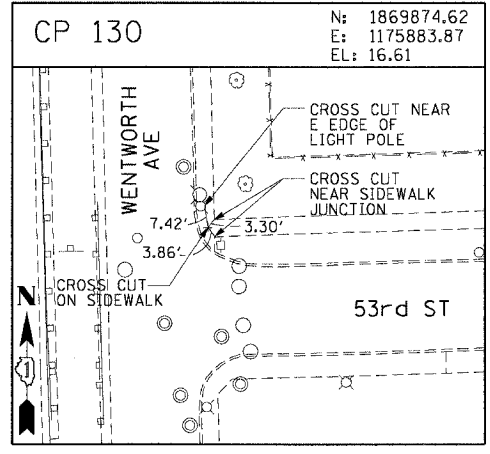
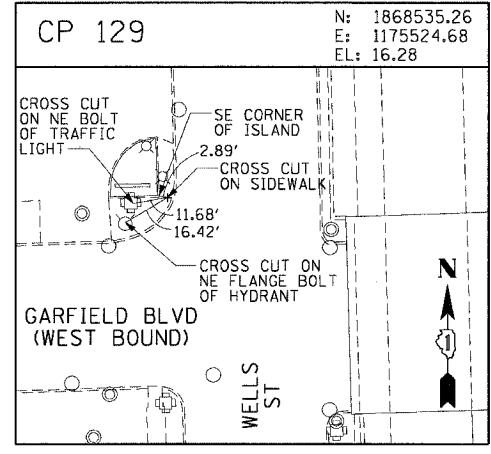
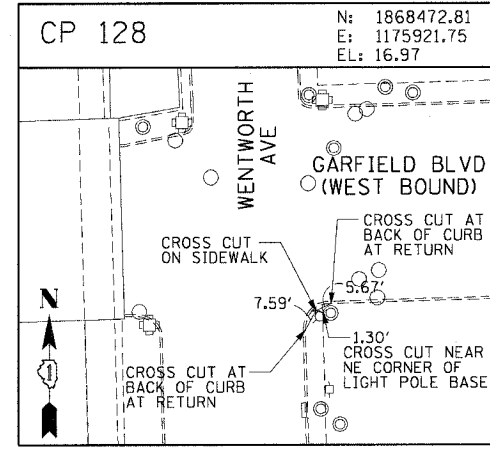
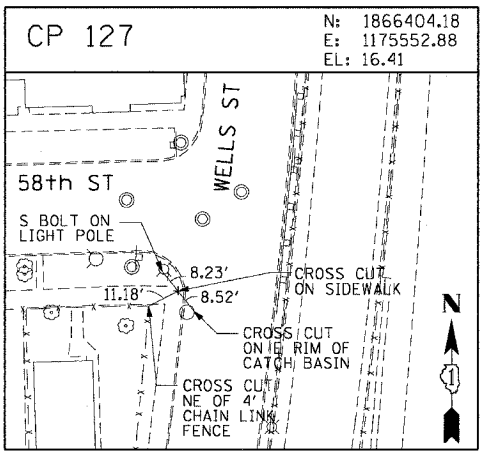
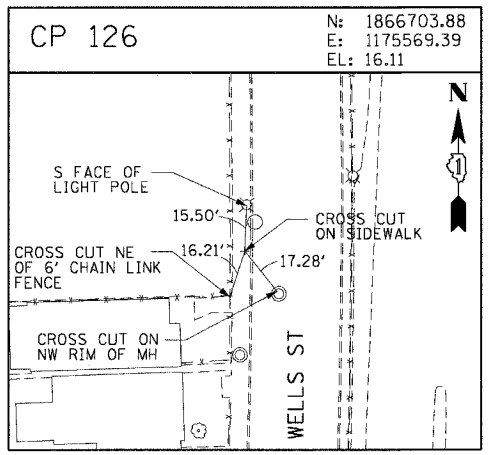
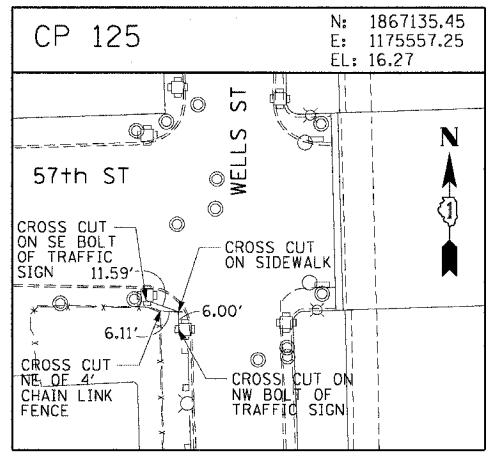
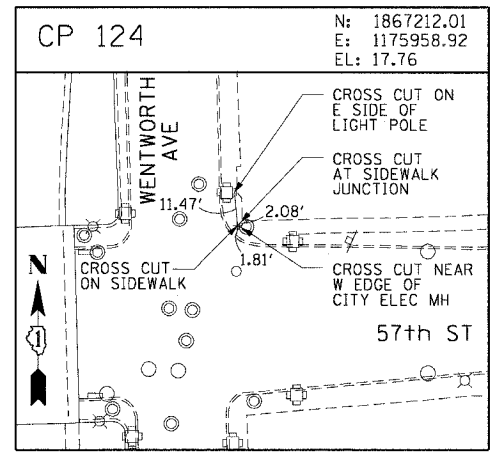
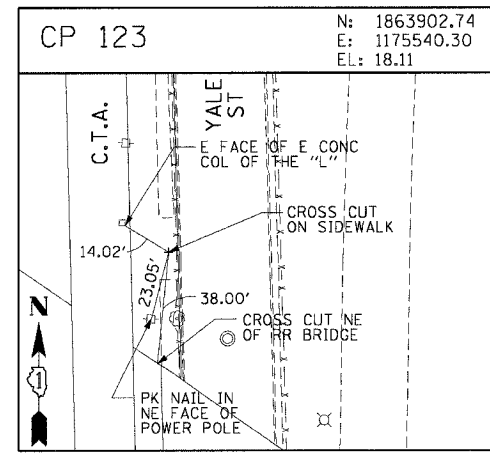
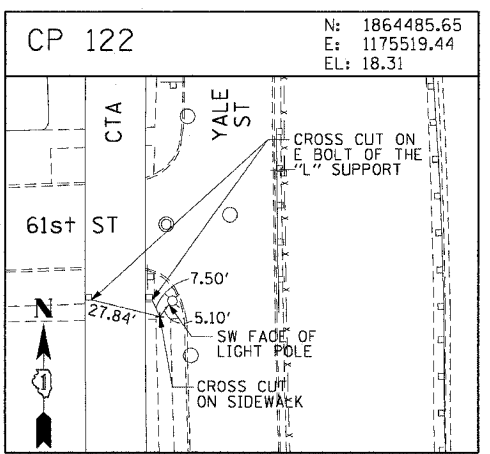
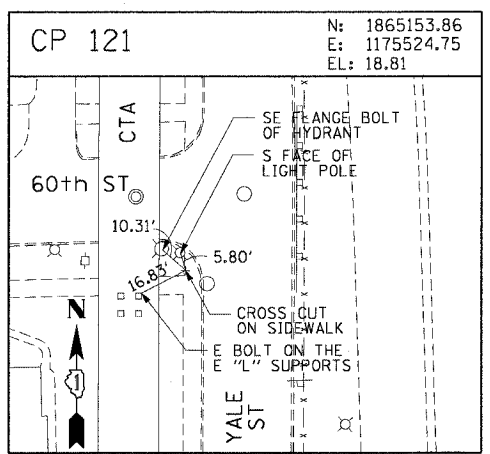
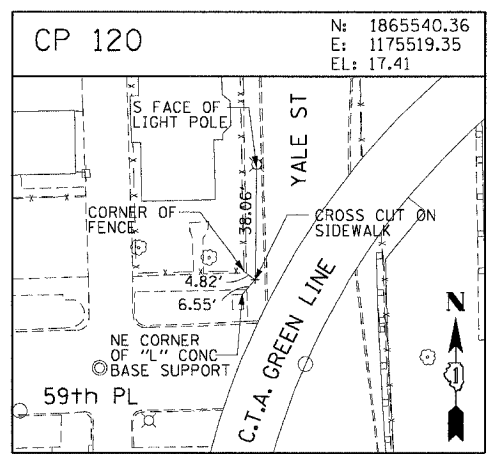
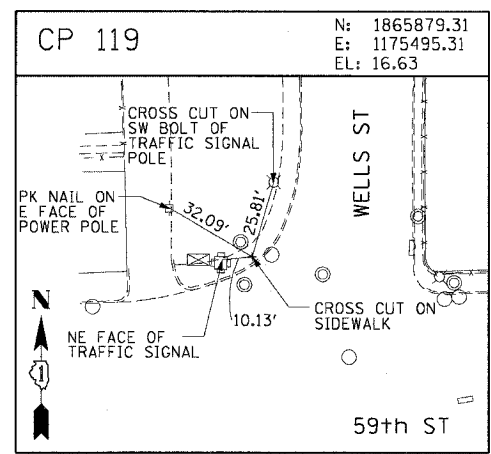
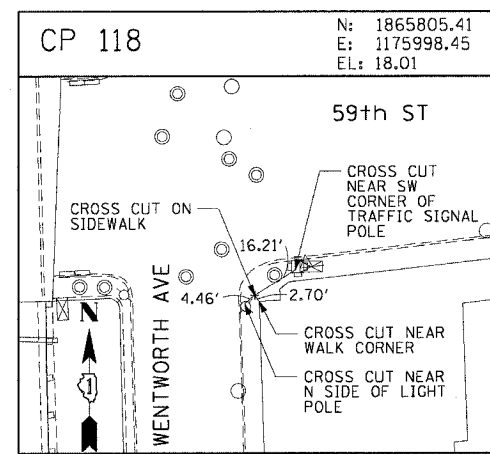


F.A.I. RTE.	SECTION	COUNTY	TOTAL SHEETS	SHEET NO.
90/94	2004-067L	COOK	35	17
STA.	TO STA.			
FED. ROAD DIST. NO. 1 ILLINOIS FED. AID PROJECT				
62806				



REVISIONS	
NAME	DATE

ILLINOIS DEPARTMENT OF TRANSPORTATION
 F.A.I. 90/94 (DAN RYAN EXPRESSWAY)
 59th ST TO 47th ST (FRONTAGE ROAD)
 CITY OF CHICAGO LIGHTING CONDUIT & FOUNDATIONS
 WELLS STREET

SURVEY TIES AND CONTROL POINTS

SCALE: 1"=30'
 DATE: February 11, 2005

DRAWN BY: MRK
 CHECKED BY: JAL

\\cnc\nt\p\p40488\p40488\elec\N4-cnr\5\st\control\902\2005\020205.dwg 02/02/2005 09:40:40 AM