

62807

F. A. RTE.	SECTION	COUNTY	TOTAL SHEETS	SHEET NO.
90/94		COOK	37	22
STA. 151+00	TO STA. 161+10			
FED. ROAD DIST. NO. 1	ILLINOIS	FED AID PROJECTS		

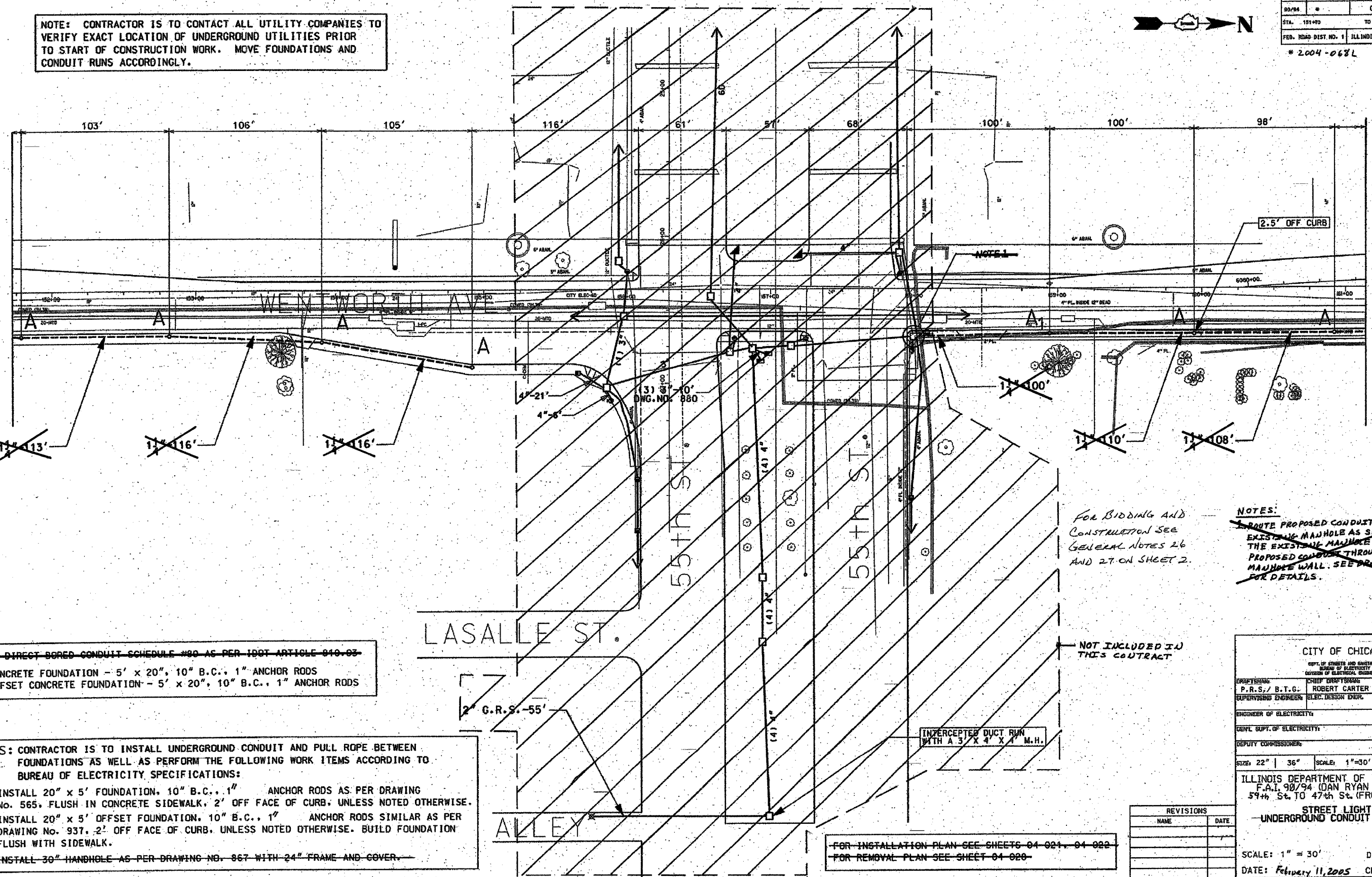
* 2.004-068L

NOTE: CONTRACTOR IS TO CONTACT ALL UTILITY COMPANIES TO VERIFY EXACT LOCATION OF UNDERGROUND UTILITIES PRIOR TO START OF CONSTRUCTION WORK. MOVE FOUNDATIONS AND CONDUIT RUNS ACCORDINGLY.



MATCH LINE
STATION 151+70
SEE SHEET 04-010

MATCH LINE
STATION 161+10
SEE SHEET 04-012



1" DIRECT BORED CONDUIT SCHEDULE #80 AS PER IDOT ARTICLE 810.03
CONCRETE FOUNDATION - 5' x 20", 10" B.C., 1" ANCHOR RODS
OFFSET CONCRETE FOUNDATION - 5' x 20", 10" B.C., 1" ANCHOR RODS

NOTES: CONTRACTOR IS TO INSTALL UNDERGROUND CONDUIT AND PULL ROPE BETWEEN FOUNDATIONS AS WELL AS PERFORM THE FOLLOWING WORK ITEMS ACCORDING TO BUREAU OF ELECTRICITY SPECIFICATIONS:
"A"- INSTALL 20" x 5' FOUNDATION, 10" B.C., 1" ANCHOR RODS AS PER DRAWING No. 565. FLUSH IN CONCRETE SIDEWALK, 2' OFF FACE OF CURB, UNLESS NOTED OTHERWISE.
"A₁"- INSTALL 20" x 5' OFFSET FOUNDATION, 10" B.C., 1" ANCHOR RODS SIMILAR AS PER DRAWING No. 937. 2' OFF FACE OF CURB, UNLESS NOTED OTHERWISE. BUILD FOUNDATION FLUSH WITH SIDEWALK.
"B"- INSTALL 30" HANDHOLE AS PER DRAWING NO. 967 WITH 24" FRAME AND COVER.

FOR BIDDING AND CONSTRUCTION SEE GENERAL NOTES 26 AND 27 ON SHEET 2.

NOTES:
~~ROUTE PROPOSED CONDUIT RUN TO THE EXISTING MANHOLE AS SHOWN. DRILL THE EXISTING MANHOLE AND INSTALL THE PROPOSED CONDUIT THROUGH THE MANHOLE WALL. SEE DRAWING BOE-2 FOR DETAILS.~~

NOT INCLUDED IN THIS CONTRACT

INTERCEPTED DUCT RUN WITH A 3' X 4' X 4' M.H.

FOR INSTALLATION PLAN SEE SHEETS 04-021, 04-022
FOR REMOVAL PLAN SEE SHEET 04-020

CITY OF CHICAGO		
DEPT. OF STREETS AND SANITATION		
BUREAU OF ELECTRICITY		
DIVISION OF ELECTRICAL ENGINEERING		
DRAFTSMAN	CHIEF DRAFTSMAN	ENGINEER
P.R.S./ B.T.G.	ROBERT CARTER	P.R.S./ B.T.G.
SUPERVISING ENGINEER	ELEC. DESIGN ENGR.	
ENGINEER OF ELECTRICITY:		DWG. NO.
DEPT. Supt. OF ELECTRICITY:		04-011
DEPUTY COMMISSIONER:		
SIZE: 22" 36"	SCALE: 1"=30'	DATE: 1/20/04

ILLINOIS DEPARTMENT OF TRANSPORTATION
F.A.I. 90/94 (DAN RYAN EXPRESSWAY)
59th St. TO 47th St. (FRONTAGE ROADS)
STREET LIGHTING
UNDERGROUND CONDUIT FACILITIES

SCALE: 1" = 30'
DATE: February 11, 2005
DRAWN BY: B.T.G.
CHECKED BY: O.L.

REVISIONS	
NAME	DATE

Revised sheet 9/9/05