

62807

| F.A.I. RTE. | SECTION | COUNTY | TOTAL SHEETS | SHEET NO. |
|-------------|-----------|--------|--------------|-----------|
| 90/94 | 2004-068L | COOK | 37 | 1 |

STATE OF ILLINOIS
DEPARTMENT OF TRANSPORTATION
DIVISION OF HIGHWAYS

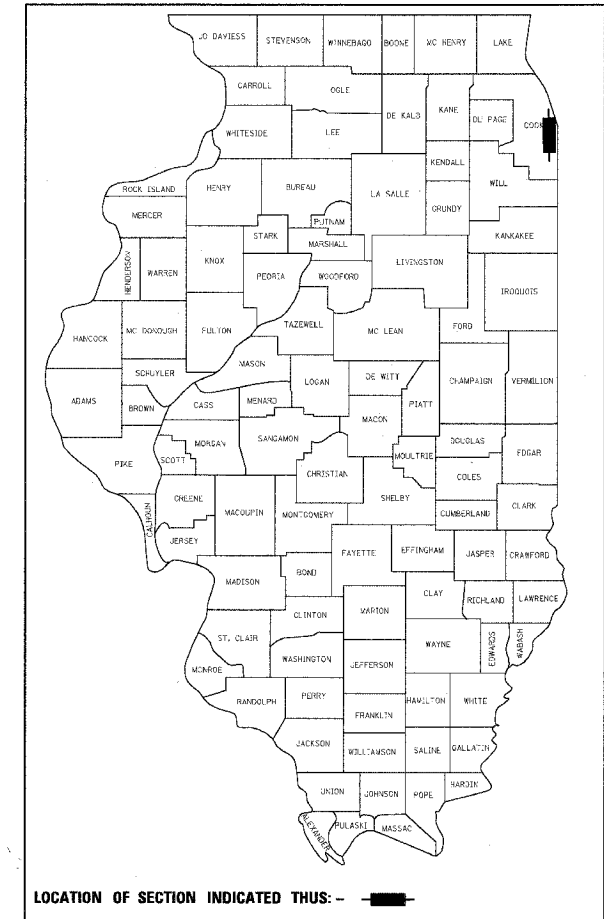
D-91-419-01

PLANS FOR PROPOSED FEDERAL AID HIGHWAY

F.A.I. ROUTE 90/94 (DAN RYAN EXPRESSWAY)
SECTION 2004-068L

~~PROJECT: IM 094 3(307)057~~

59th ST TO 47th ST (FRONTAGE ROADS)
CITY OF CHICAGO LIGHTING CONDUIT & FOUNDATIONS
WENTWORTH AVENUE
COOK COUNTY
C-91-292-04



INDEX OF SHEETS

| SHEET | DESCRIPTION |
|-------|---|
| 1 | COVER SHEET |
| 2 | GENERAL NOTES AND PROJECT COMMITMENTS |
| 3-7 | SUGGESTED CONSTRUCTION SCHEDULE |
| 8 | SUMMARY OF QUANTITIES |
| 9-19 | ALIGNMENT PLANS, SURVEY TIES AND CONTROL POINTS |
| 20-25 | STREET LIGHTING UNDERGROUND CONDUIT FACILITIES |
| 26-29 | REMOVAL OF STREET LIGHTING EQUIPMENT |
| 30-36 | BOE STANDARD DETAILS |
| 37 | TEMPORARY INFORMATION SIGNING |

IDOT HIGHWAY STANDARDS

| STANDARD | DESCRIPTION |
|-----------|---|
| 000001-04 | STANDARD SYMBOLS, ABBREVIATIONS, AND PATTERNS |
| 001006 | DECIMAL OF AN INCH AND OF A FOOT |
| 701701-04 | URBAN LANE CLOSURE MULTILANE INTERSECTION |
| 701801-03 | LANE CLOSURE MULTILANE 1W OR 2W CROSSWALK OR SIDEWALK CLOSURE |
| 702001-05 | TRAFFIC CONTROL DEVICES |

PROJECT LOCATED IN CITY OF CHICAGO

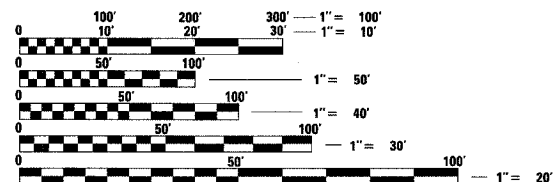
DESIGN DESIGNATION

WENTWORTH AVE: 6259 (20) URBAN COLLECTOR

| ADT (2020) | DESIGN SPEED | POSTED SPEED |
|------------|--------------|--------------|
| 11,000 | 30 | 25 |

FRONTAGE ROADS:

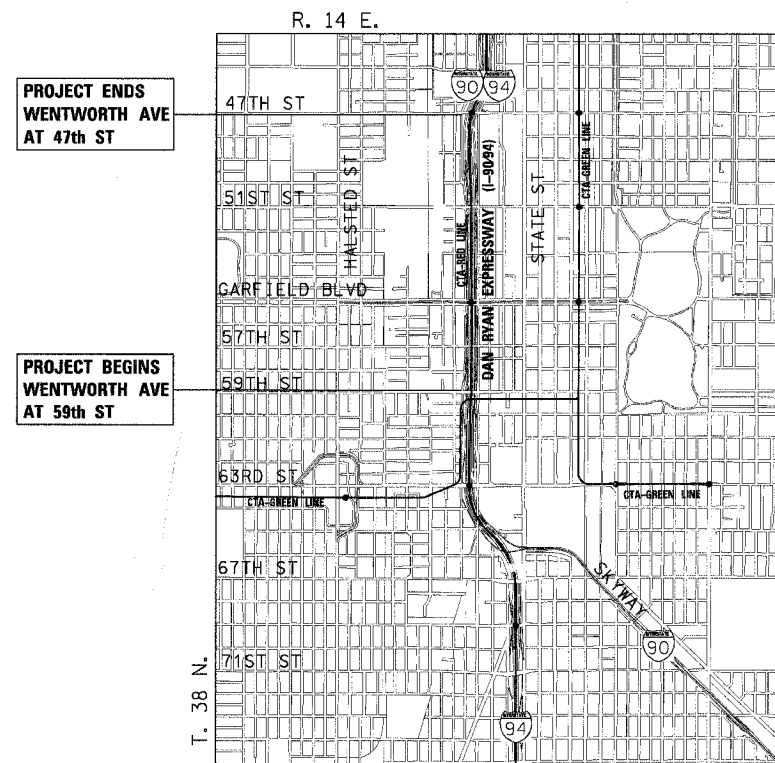
| | | | |
|---------------|--------|----|----|
| WENTWORTH AVE | 11,000 | 30 | 25 |
|---------------|--------|----|----|



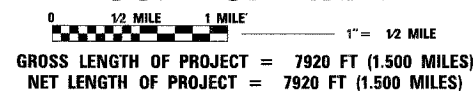
FULL SIZE PLANS HAVE BEEN PREPARED USING STANDARD ENGINEERING SCALES. REDUCED SIZED PLANS WILL NOT CONFORM TO STANDARD SCALES. IN MAKING MEASUREMENTS ON REDUCED PLANS, THE ABOVE SCALES MAY BE USED.

DIGGER:
CHICAGO UTILITY ALERT NETWORK
(312) 744-7000

CONTRACT NO. 62807



LOCATION MAP



DISTRICT ONE DESIGN/CONSULTANT SERVICES PROJECT MANAGER
RAJENDRA SHAH (847) 705-4437



John A. Lukowski
JOHN A. LUKOWSKI
1-19
SHEET NOS. 11-30-05
EXPIRES 2-3-05
DATE



James P. Coleman
JAMES P. COLEMAN
20-29
SHEET NOS. 11-30-05
EXPIRES 02-02-2005
DATE

STATE OF ILLINOIS
DEPARTMENT OF TRANSPORTATION
DIVISION OF HIGHWAYS

SUBMITTED *February 9, 20 05*
Dina O'Keefe
DEPUTY DIRECTOR OF HIGHWAYS, REGION ENGINEER

March 25, 20 05
Mike Nune
ENGINEER OF DESIGN AND ENVIRONMENT

March 25, 20 05
Victor Madariaga
DIRECTOR OF HIGHWAYS, CHIEF ENGINEER

PRINTED BY THE AUTHORITY
OF THE STATE OF ILLINOIS

CTE ENGINEERS
CONSOER TOWNSEND ENVIRODYNE ENGINEERS, INC.
303 EAST WACKER DRIVE, SUITE 600
CHICAGO ILLINOIS 60601-5212, PHONE: (312) 938-0300