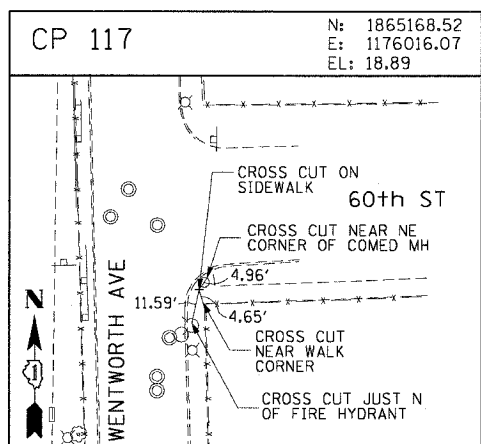
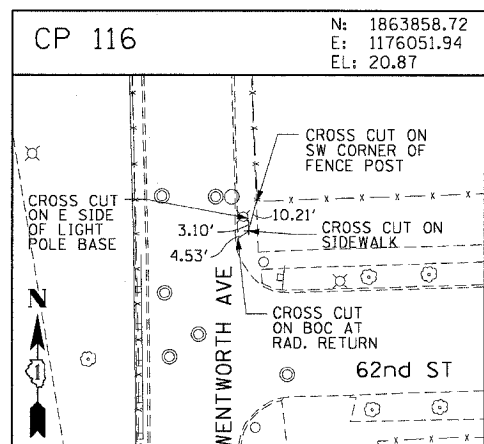
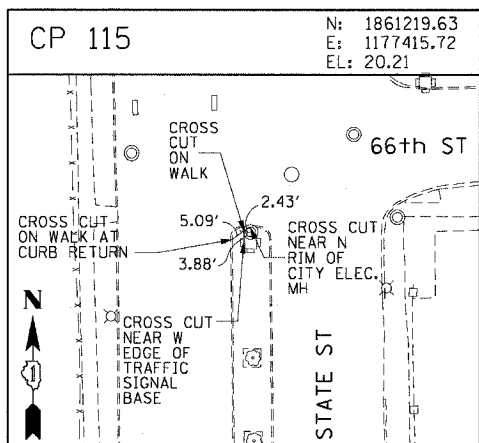
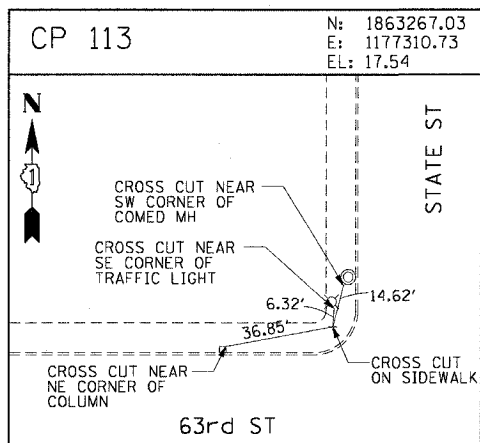
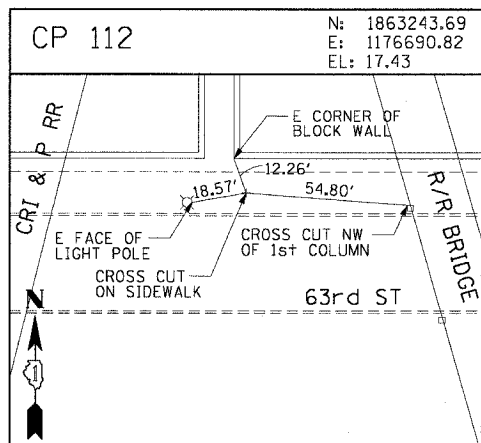
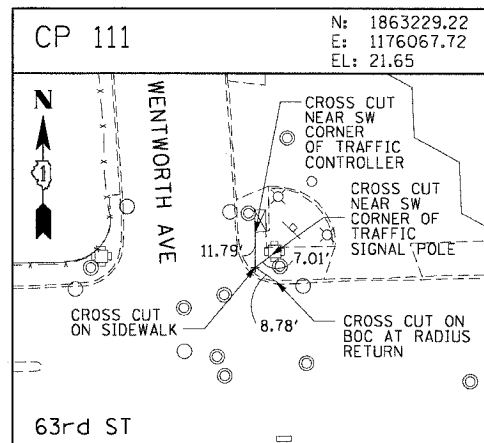
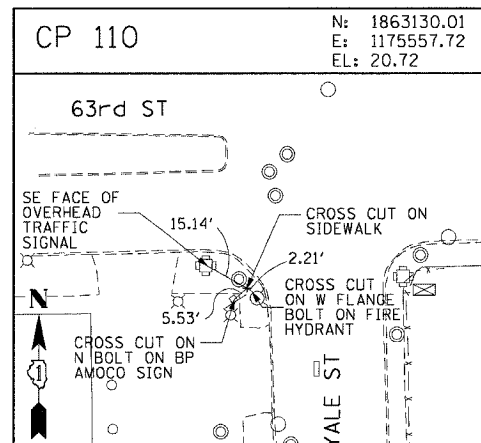
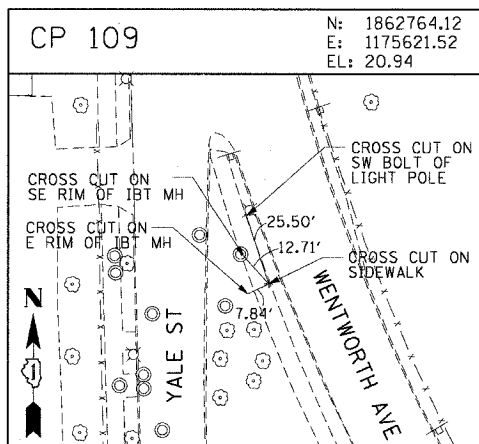
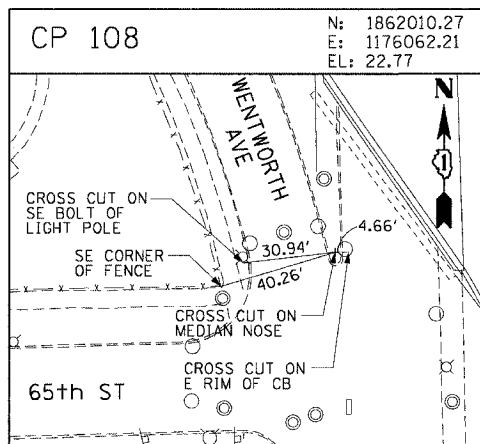
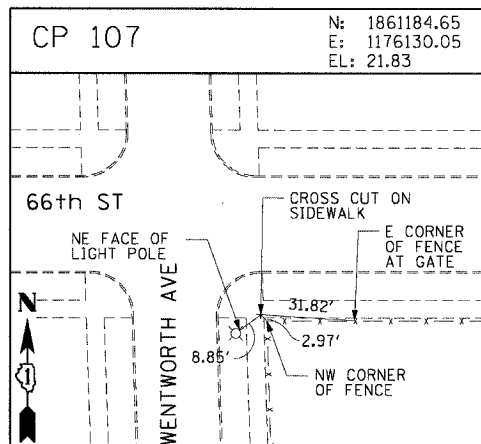
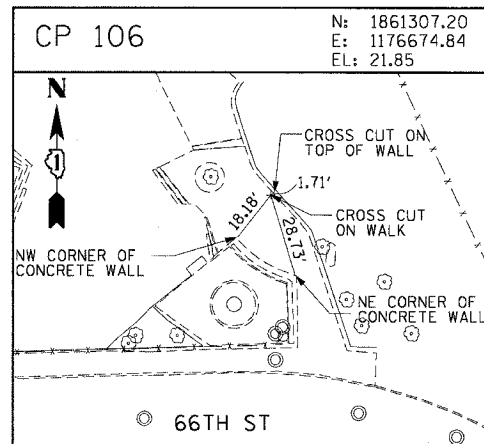
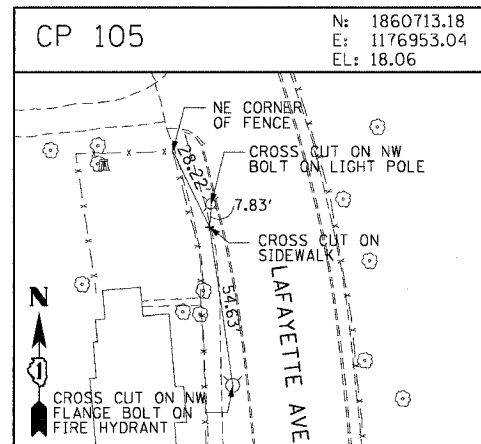
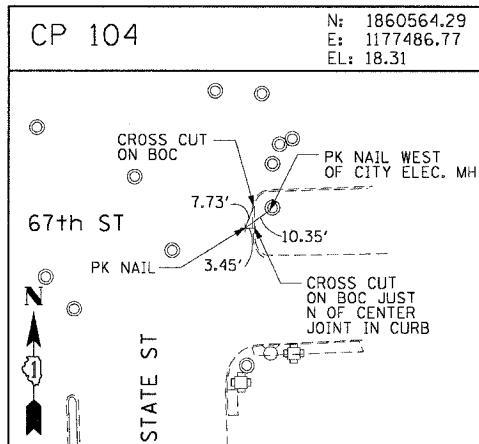
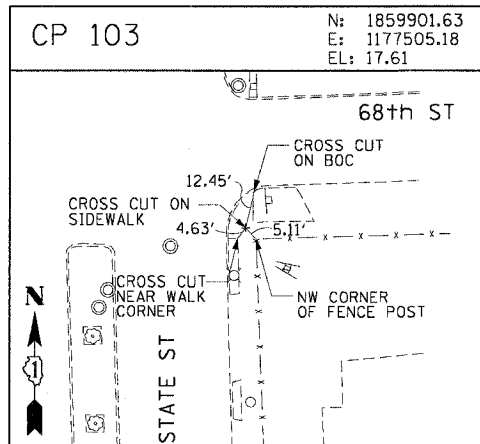
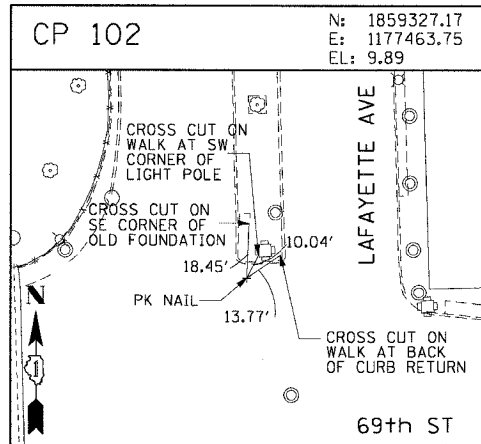
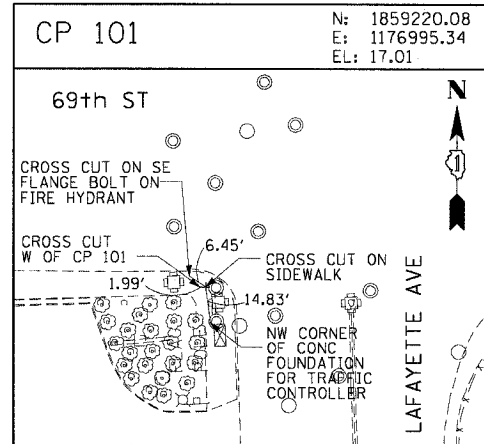
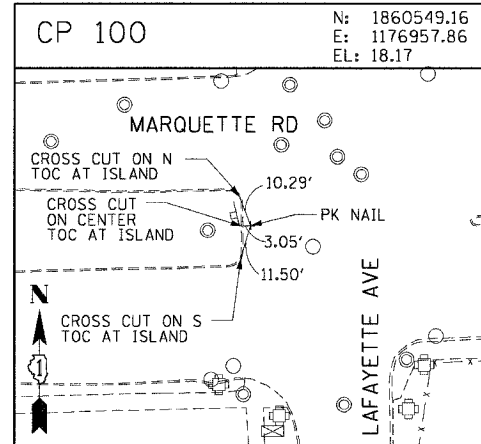


F.A.I. RTE.	SECTION	COUNTY	TOTAL SHEETS	SHEET NO.
90/94	2004-068L	COOK	37	16
STA.	TO STA.			
FED. ROAD DIST. NO. 1 ILLINOIS FED. AID PROJECT				
62807				



CTE ENGINEERS
 CONSIDER TOWNSEND ENVIRONMENTAL ENGINEERS, INC.
 303 EAST WACKER DRIVE, SUITE 600
 CHICAGO, ILLINOIS 60601-5202, PHONE: (312) 938-0300

REVISIONS	
NAME	DATE

ILLINOIS DEPARTMENT OF TRANSPORTATION
 F.A.I. 90/94 (DAN RYAN EXPRESSWAY)
 59th ST TO 47th ST (FRONTAGE ROAD)
 CITY OF CHICAGO LIGHTING CONDUIT & FOUNDATIONS
 WENTWORTH AVENUE

SURVEY TIES AND CONTROL POINTS

SCALE: 1"=30'
 DATE: February 11, 2005

DRAWN BY: MRK
 CHECKED BY: JAL

02/02/2005 09:09:05 AM \\svech\nt\p40468\p40468\elec\N4-cant\95\N\cont\act\903\0109\15012a.dwg