

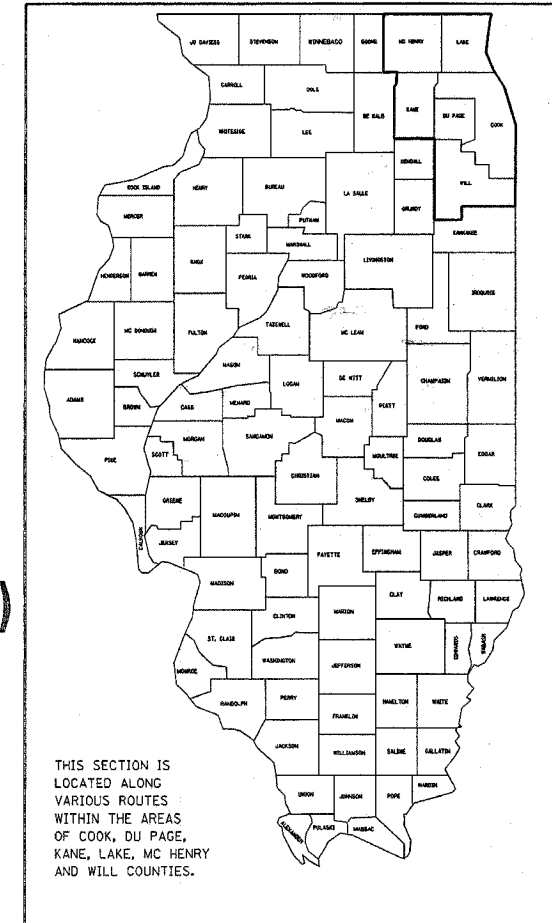
STATE OF ILLINOIS
DEPARTMENT OF TRANSPORTATION
DIVISION OF HIGHWAYS
PLANS FOR PROPOSED HIGHWAY

FA. RTE.	SECTION	COUNTY	TOTAL SHEET
VAR.	2004-090 I	*	21
ILLINOIS PROJECT			NO.
*COOK, DU PAGE, KANE, LAKE MCHENRY AND WILL			1
CONTRACT NO. 62830			

FOR INDEX OF SHEETS, SEE SHEET NO. 2

SCALES { PLAN
 PROFILE HORIZ.
 PROFILE VERT.
 CROSS SECTIONS

ROUTE: VARIOUS DISTRICT ONE
SECTION: 2004-090 I
COUNTIES: VARIOUS (COOK, DU PAGE, KANE, LAKE MCHENRY AND WILL)
EXPRESSWAY AND ARTERIAL HIGHWAY CLEANING (SWEEPING)
C-91-349-04



EXPRESSWAYS		
PLAN SHEET NO.	TEAM SECTION	
7	I-290, EDENS & KENNEDY & ELGIN-O'HARE	
8	EISENHOWER, STEVENSON & DAN RYAN	
9	BISHOP FORD, KINGERY, I-57 & I-80	
10	INNER CITY EXPRESSWAY (NORTH)	
11	INNER CITY EXPRESSWAY (SOUTH)	
ARTERIAL		
PLAN SHEET NO.	TEAM SECTION	KEY LOCATIONS
12	WOODSTOCK TEAM SECTION	W1 - W24
13	GRAYSLAKE TEAM SECTION	G1 - G73
13	GURNEE TEAM SECTION	GU1 - GU48
14	ST. CHARLES TEAM SECTION	SC1 - SC40
15	ARLINGTON TEAM SECTION	AH1 - AH32
15	NORTHBROOK TEAM SECTION	NB1 - NB65
15	RODENBURG ARTERIAL PORTION	R1 - R6
15	NORTHSIDE TEAM SECTION	NS1 - NS27
16	ALSIP TEAM SECTION	A1 - A21
16	HILLSIDE TEAM SECTION	H1 - H39
16	HARVEY TEAM SECTION	HY1 - HY47
17	NAPERVILLE TEAM SECTION	NA1 - NA16
17	OAKBROOK TEAM SECTION	OB1 - OB13
18	JOLIET TEAM SECTION	J1 - J8
18	NEW LENOX TEAM SECTION	NL1 - NL21

SEE LOCATION MAPS - SHEETS 7 THRU 18

STATE OF ILLINOIS
DEPARTMENT OF TRANSPORTATION
DIVISION OF HIGHWAYS

SUBMITTED July 21, 2005
Dina O'Keefe
DEPUTY DIRECTOR OF HIGHWAYS, REGION ENGINEER

August 19, 2005
Mike Nene
ENGINEER OF DESIGN AND ENVIRONMENT

August 19, 2005
Julien Maden
DIRECTOR, DIVISION OF HIGHWAYS

PRINTED BY THE AUTHORITY
 OF THE STATE OF ILLINOIS

J.U.L.I.E. JOINT UTILITY LOCATION
 INFORMATION FOR EXCAVATION
 TOLL FREE PHONE: 1-800-892-0123

CONTRACT NO. 62830

REGION ONE/ BUREAU OF DESIGN
 PLAN PREPARATION ENGINEER: R. BORO 7705-4178

11.1.150084.H004: 4.3:10:1.0 07/20/2005

P. & S. NO.	SECTION	COUNTY	TOTAL SHEETS	SHEET NO.
VAR.	2004-090 I	VARIOUS	21	2
STA.	TO STA.			
FED. ROAD DIST. NO.	ILLINOIS	FED. AID PROJECT		

CONTRACT NO. 62830
LAKE, MC HENRY AND WILL

INDEX OF SHEETS

1. TITLE SHEET
2. INDEX OF SHEETS
APPLICABLE STATE STANDARDS
3. SUMMARY OF QUANTITIES
SCHEDULE OF CLEANING STARTING DATES
4. EXPRESSWAY TYPICAL SECTIONS
5. ARTERIAL TYPICAL SECTIONS
6. LIMITS OF SIGN CLEANING
- 7.- 18. LOCATION SHEETS
19. DISTRCT ONE DETAILS: TRAFFIC CONTROL DEVICES FOR
HIGHWAY AND SIGN CLEANING OPERATIONS-NIGHT TIME ONLY
20. DISTRICT ONE DETAILS: TRAFFIC CONTROL DEVICES FOR
HIGHWAY AND SIGN CLEANING OPERATIONS-DAY TIME ONLY
21. TRAFFIC CONTROL DETAILS FOR SHOULDER CLOSURES
AND PARTIAL RAMP CLOSURES

- 701001-01
- 701006-02
- 701101-01
- 701301-02
- 701311-02
- 701400-02
- 701401-03
- 7011411-03
- 701426-02
- 702001-05

STATE STANDARDS

- OFF-ROAD OPERATION 2L, 2W, 15' MIN. AWAY FOR SPEEDS >45 MPH
- OFF-ROAD OPERATION 2L, 2W, 15' TO PAVEMENT EDGE FOR SPEEDS >45 MPH
- OFF-ROAD OPERATION 2L, 2W, DAY ONLY FOR SPEEDS >45 MPH
- LANE CLOSURE, 2L 2W, SHORT TIME OPERATIONS
- LANE CLOSURE, 2L 2W, MOVING OPERATIONS - DAY ONLY
- APPROACH TO LANE CLOSURE, FREEWAY/EXPRESSWAY
- LANE CLOSURE, FREEWAY/EXPRESSWAY
- LANE CLOSURE, MULTILANE AT ENTERANCE/EXIT RAMP FOR SPEEDS >45 MPH
- LANE CLOSURE, MULTILANE INTERMITTENT OR MOVING OPERATION FOR SPEEDS >45 MPH
- TRAFFIC CONTROL DEVICES

REVISIONS	
NAME	DATE

ILLINOIS DEPARTMENT OF TRANSPORTATION
INDEX OF SHEETS AND STATE STANDARDS
SCALE: NONE
DATE: 7/21/2005
DRAWN BY
CHECKED BY

P. A. DIST.	SECTION	COUNTY	TOTAL SHEETS	SHEET NO.
VAR.	2004-090 I	VARIOUS	21	3
STA.	TO STA.			
FED. ROAD DIST. NO.	ALTERN.	FED. AID PROJECT		

CONTRACT NO. 62830

SUMMARY OF QUANTITIES

CODE NO.	ITEM	UNIT	URBAN MAIN QUANTITY
XQ323141	SUPPLEMENTAL SWEEPING	MILE	300
XQ324104	INNER CITY SWEEPING (SPECIAL)	MILE	1763
XQ329915	FULL EXPRESSWAY CLEANING CYCLE	EACH	6
XQ330500	INITIAL ARTERIAL CLEANING CYCLE	EACH	1
XQ330600	FULL ARTERIAL CLEANING CYCLE	EACH	2
XQ330650	INITIAL EXPRESSWAY CLEANING CYCLE	EACH	1
XQ414200	SIGN CLEANING CYCLE	EACH	1
XQ539100	INNER CITY EXPRESSWAY CLEANING CYCLE	EACH	5

EXPRESSWAY CLEANING SCHEDULE OF STARTING DATES - 2006

INITIAL CLEANING CYCLE	----	FEBRUARY 1
1st FULL CLEANING CYCLE	----	APRIL 12
1st INNER CITY CYCLE	----	MAY 2
2nd FULL CLEANING CYCLE	----	MAY 20
2nd INNER CITY CYCLE	----	JUNE 9
3rd FULL CLEANING CYCLE	----	JUNE 28
3rd INNER CITY CYCLE	----	JULY 18
4th FULL CLEANING CYCLE	----	AUGUST 6
4th INNER CITY CYCLE	----	AUGUST 26
5th FULL CLEANING CYCLE	----	SEPTEMBER 14
5th INNER CITY CYCLE	----	OCTOBER 4
6th FULL CLEANING CYCLE	----	OCTOBER 23
6th INNER CITY CYCLE	----	NOVEMBER 12 (RECOMMENDED TO BE COMPLETED ON OR BEFORE NOVEMBER 30)

EXPRESSWAY CLEANING SCHEDULE OF STARTING DATES - 2007

INITIAL CLEANING CYCLE	----	FEBRUARY 1
1st FULL CLEANING CYCLE	----	APRIL 12
1st INNER CITY CYCLE	----	MAY 2
2nd FULL CLEANING CYCLE	----	MAY 20
2nd INNER CITY CYCLE	----	JUNE 9
3rd FULL CLEANING CYCLE	----	JUNE 28
3rd INNER CITY CYCLE	----	JULY 18
4th FULL CLEANING CYCLE	----	AUGUST 6
4th INNER CITY CYCLE	----	AUGUST 26
5th FULL CLEANING CYCLE	----	SEPTEMBER 14
5th INNER CITY CYCLE	----	OCTOBER 4
6th FULL CLEANING CYCLE	----	OCTOBER 23
6th INNER CITY CYCLE	----	NOVEMBER 12 (RECOMMENDED TO BE COMPLETED ON OR BEFORE NOVEMBER 30)

ARTERIAL CLEANING SCHEDULE OF STARTING DATES - 2006

INITIAL CLEANING CYCLE	----	MARCH 1
1st FULL CLEANING CYCLE	----	JUNE 1
2nd FULL CLEANING CYCLE	----	SEPTEMBER 1 (RECOMMENDED TO BE COMPLETED ON OR BEFORE NOVEMBER 30)

ARTERIAL CLEANING SCHEDULE OF STARTING DATES - 2007

INITIAL CLEANING CYCLE	----	MARCH 1
1st FULL CLEANING CYCLE	----	JUNE 1
2nd FULL CLEANING CYCLE	----	SEPTEMBER 1 (RECOMMENDED TO BE COMPLETED ON OR BEFORE NOVEMBER 30)

NOTES:

- SCHEDULE MAY VARY AS DIRECTED BY THE ENGINEER.
- THE CONTRACTOR MAY NOT START CLEANING CYCLES BEFORE THE DATES SCHEDULED IN THE PLANS WITHOUT WRITTEN AUTHORIZATION FROM THE ENGINEER.
- NO WORK WILL BE ALLOWED DURING ANY LEGAL HOLIDAY PERIOD.

REVISIONS	
NAME	DATE

ILLINOIS DEPARTMENT OF TRANSPORTATION

**SUMMARY OF QUANTITIES
AND
SCHEDULE OF STARTING DATES**

SCALE: NONE
DATE: 7/21/2005

DRAWN BY
CHECKED BY

7/21/2005
c:\p\project\m127988\m127988.dwg

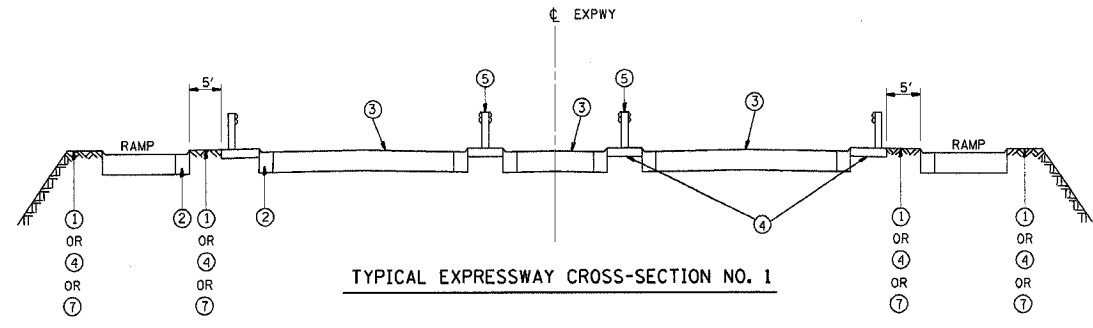
F. & E.	SECTION	COUNTY	TOTAL SHEETS	SHEET NO.
VAR.	2004-090 I	VARIOUS	21	4
STA.	TO STA.			
FED. ROAD DIST. NO.	ILLINOIS	FED. AID PROJECT		

CONTRACT NO. 62830

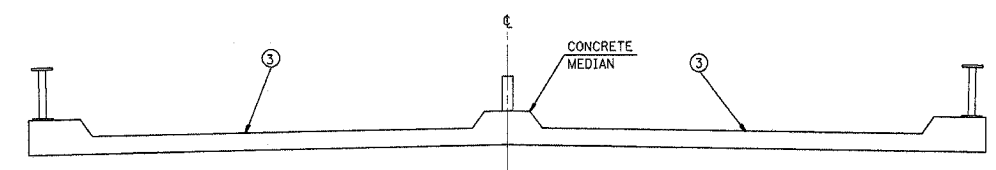
LEGEND

- ① AREA OF RUBBISH REMOVAL
- ② CURB AND GUTTER
- ③ TRAVELED ROADWAY
- ④ STABILIZED SHOULDER OR MEDIAN
- ⑤ STEEL PLATE GUARD RAIL
- ⑥ CONCRETE BARRIER
- ⑦ AGGREGATE SHOULDER (TO BE CLEANED BY HAND TOOLS OF DEBRIS/LITTER)
- ⑧ RAISED CONCRETE MEDIAN

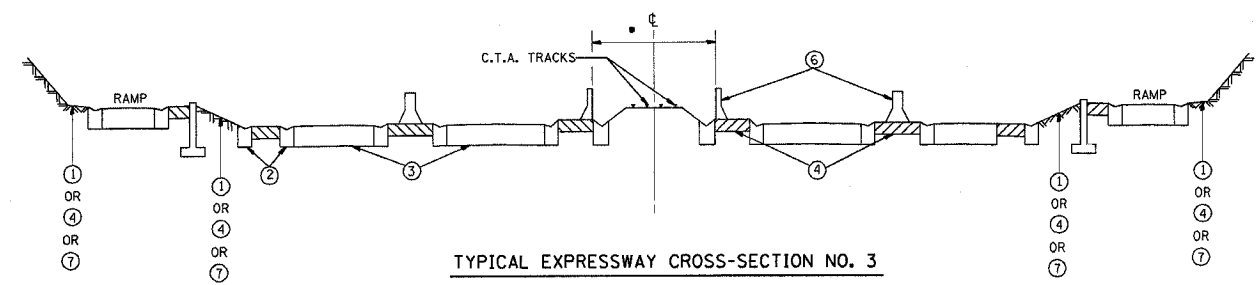
NOTE: SLOPE WALLS UNDER BRIDGES ARE NOT INCLUDED IN AREAS TO BE CLEANED.



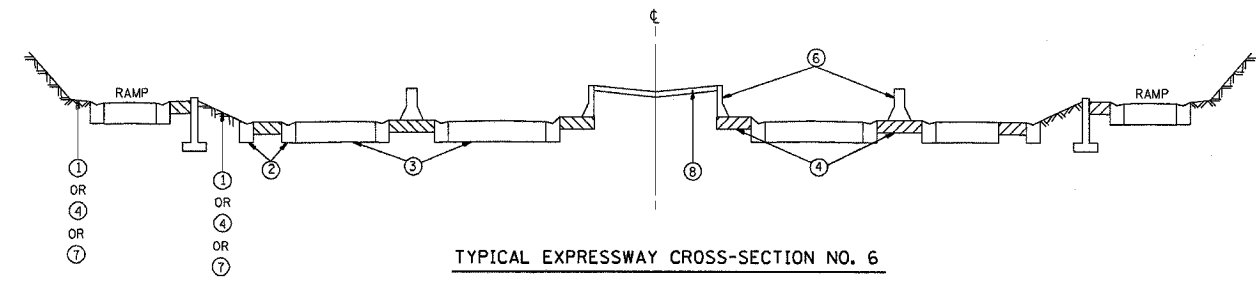
TYPICAL EXPRESSWAY CROSS-SECTION NO. 1



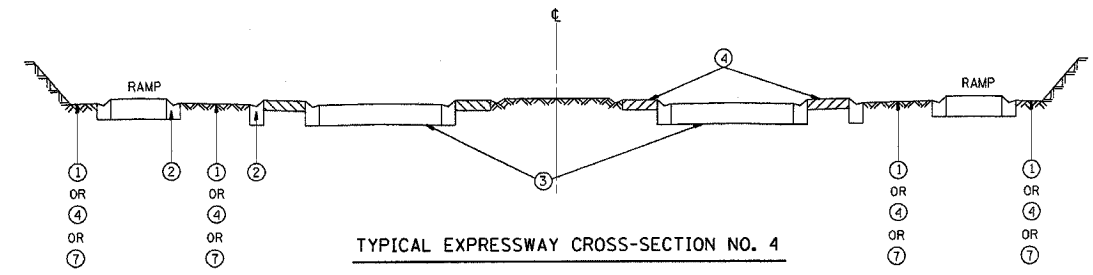
TYPICAL CROSS-SECTION OF ELEVATED ROADWAY
TYPICAL EXPRESSWAY CROSS-SECTION NO. 2



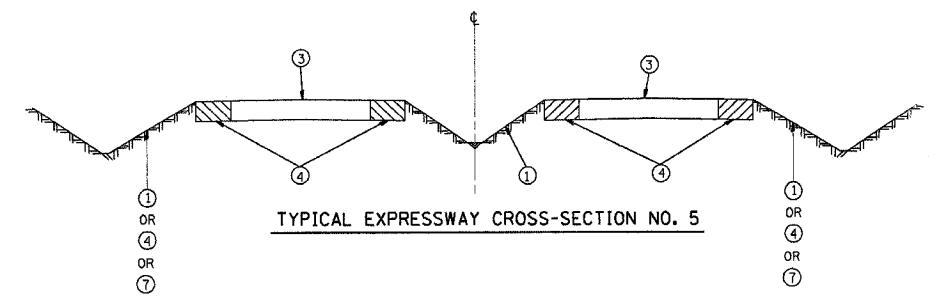
TYPICAL EXPRESSWAY CROSS-SECTION NO. 3



TYPICAL EXPRESSWAY CROSS-SECTION NO. 6



TYPICAL EXPRESSWAY CROSS-SECTION NO. 4



TYPICAL EXPRESSWAY CROSS-SECTION NO. 5

REVISIONS	
NAME	DATE

ILLINOIS DEPARTMENT OF TRANSPORTATION

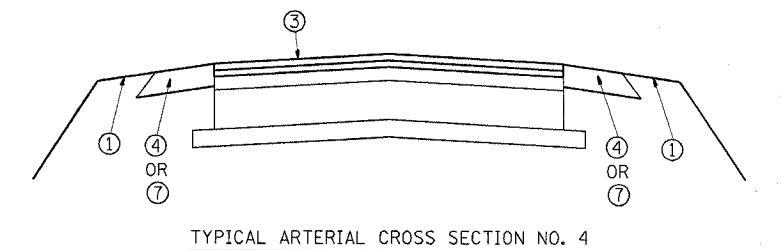
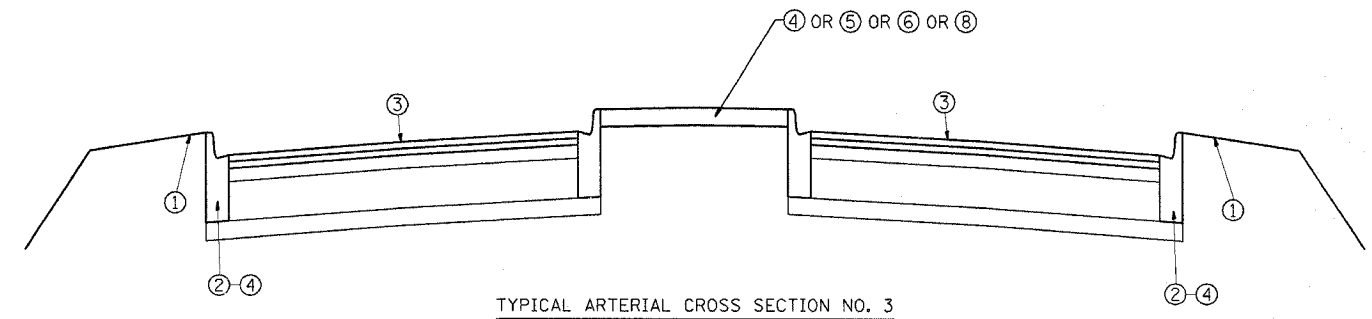
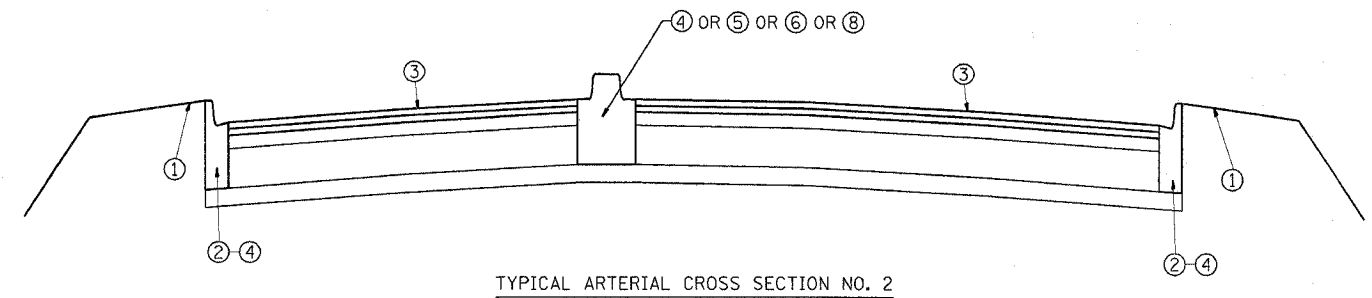
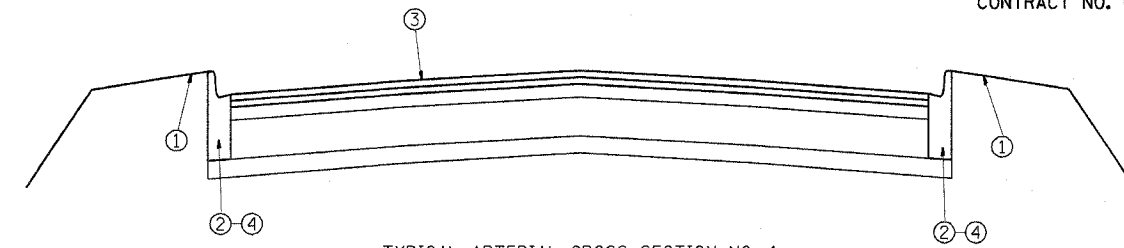
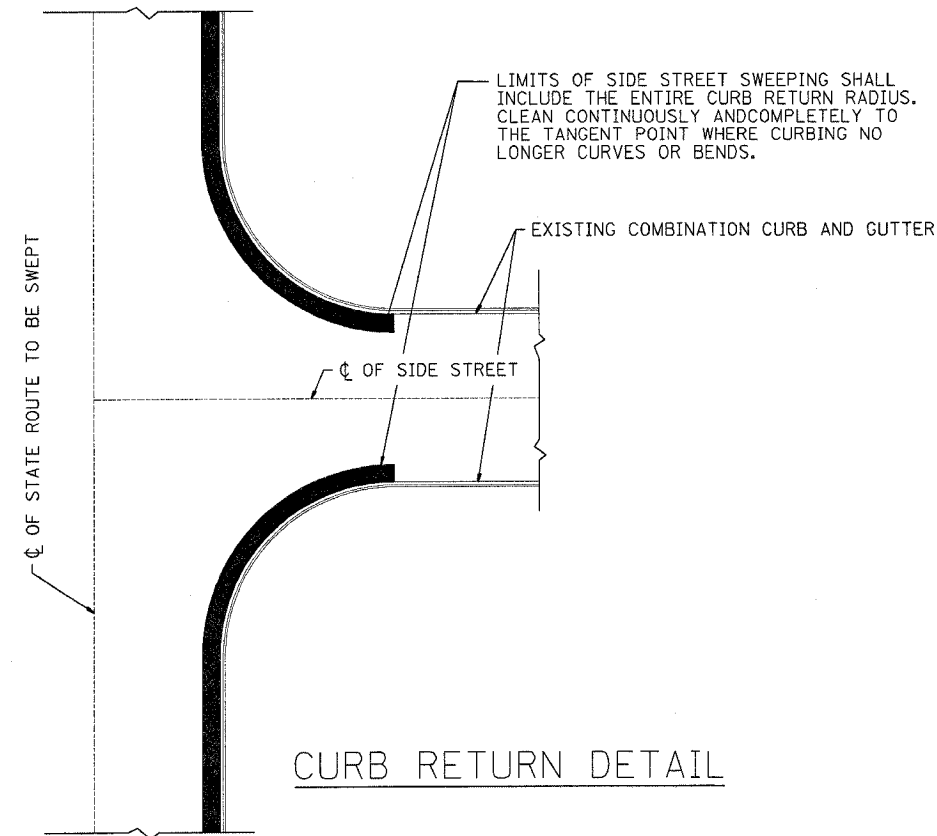
TYPICAL EXPRESSWAY CROSS-SECTIONS

SCALE: NONE
DATE: 7/21/2005

DRAWN BY
CHECKED BY

F.A. RTE.	SECTION	COUNTY	TOTAL SHEETS	SHEET NO.
VAR.	2004-090 I	VARIOUS	21	5
STA.		TO STA.		
FED. ROAD DIST. NO.		ILLINOIS FED. AID PROJECT		

CONTRACT NO. 62830



- LEGEND**
- ① AREA NOT TO BE CLEANED
 - ② CURB AND GUTTER
 - ③ TRAVELED ROADWAY
 - ④ STABILIZED SHOULDER OR MEDIAN
 - ⑤ STEEL PLATE GUARD
 - ⑥ CONCRETE BARRIER
 - ⑦ AGGREGATE SHOULDER (TO BE CLEANED BY HAND TOOLS OF DEBRIS/LITTER)
 - ⑧ RAISED CONCRETE MEDIAN

NOTE:
SLOPE WALLS UNDER BRIDGES ARE NOT INCLUDED IN AREAS TO BE CLEANED.

REVISIONS	
NAME	DATE

ILLINOIS DEPARTMENT OF TRANSPORTATION
EXPRESSWAY AND ARTERIAL HIGHWAY
CLEANING (SWEEPING)

**TYPICAL
ARTERIAL CROSS SECTIONS
AND CURB RETURN DETAIL**

SCALE: NONE
DATE: 7/21/2005

DRAWN BY
CHECKED BY

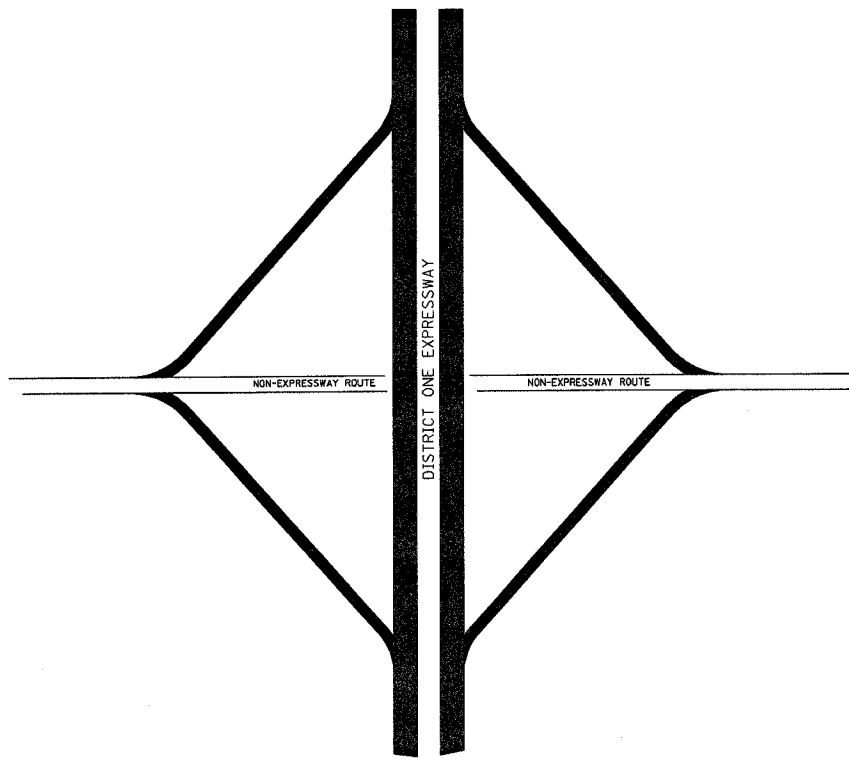
MLL/9888a.mxd: 14:33:41 07/21/2005

F. A. NO.	SECTION	COUNTY	TOTAL SHEETS	SHEET NO.
VAR.	2004-090 I	VARIOUS	21	6
STA.	TO STA.			
FED. ROAD DIST. NO.	PLANES	FED. AID PROJECT		

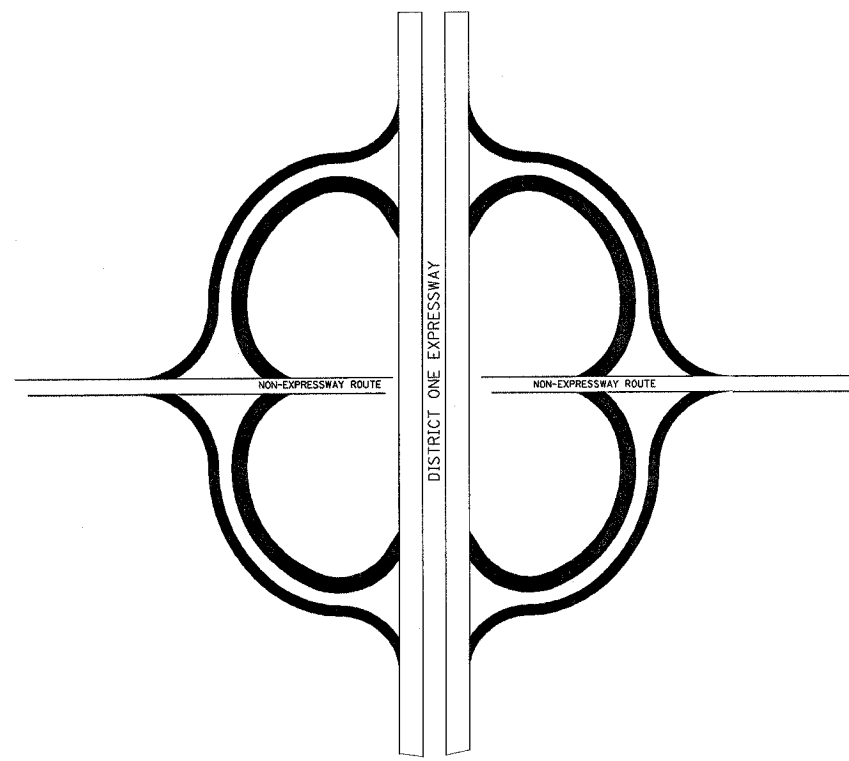
CONTRACT NO. 62830

EXPRESSWAY PARTNERSHIP RECOGNITION SIGN LOCATIONS

NO.	SPONSOR	LOCATION
1	MID-TOWN TENNIS	KENNEDY, OUTBOUND, NORTH AVE. TO FULLERTON
2	U.S. CELLULAR	KENNEDY, OUTBOUND, HARLEM TO CANFIELD
3	UNILOCK	KENNEDY, OUTBOUND, CANFIELD TO CUMBERLAND
4	MONARCH STEEL	KENNEDY, INBOUND, CUMBERLAND TO CANFIELD
5	MIDWEST GROUNDCOVERS/TRADING	KENNEDY, INBOUND, NAGLE TO CENTRAL
6	CHICAGO CUBS	KENNEDY, INBOUND, IRVING PARK TO BELMONT
7	900 N. MICHIGAN SHOPS	KENNEDY, INBOUND, FULLERTON TO NORTH
8	CHICAGO BEARS	KENNEDY, INBOUND, NORTH AVE. TO OGDEN
9	MILLER BREWING	KENNEDY, OUTBOUND, AT OGDEN ENTRANCE
10	CHICAGO BULLS	KENNEDY, OUTBOUND, AT MILWAUKEE EXIT
11	MCGRATH LEXUS	KENNEDY, OUTBOUND, AT DIVISION
12	HOME DEPOT, INC.	KENNEDY, OUTBOUND, AT NORTH AVE.
13	A. FINKL & SONS/GENERAL IRON	KENNEDY, OUTBOUND, AT ARMITAGE
14	BUCKTOWN GARDEN CLUB	KENNEDY, OUTBOUND, AT CORTLAND/ASHLAND
15	GUSTITUS GROUP	KENNEDY, OUTBOUND, AT FULLERTON
16	LINCOLN PARK YOUNG PROFESSIONALS	KENNEDY, IN/OUTBOUND, AT DAMEN
17	UBS	KENNEDY, OUTBOUND, AT IRVING PARK
18	EDWARD FOX PHOTOGRAPHY	KENNEDY, OUTBOUND, AT LAWERENCE
19	ESURANCE	KENNEDY, OUTBOUND, AT BRYN MAWR EXIT
20	MCGINTY BROTHERS	KENNEDY, OUTBOUND, AT CUMBERLAND EXIT (WEST SIDE)
21	MARILYN MIGLIN LP	KENNEDY, OUTBOUND, AT CUMBERLAND EXIT (EAST SIDE)
22	GALE STREET INN	KENNEDY, INBOUND, AT AUSTIN EXIT
23	EDWARD FOX PHOTOGRAPHY	KENNEDY, INBOUND, AT PULASKI ENTRANCE
24	MARMOM GROUP, INC.	KENNEDY, INBOUND AT FULLERTON
25	A. FINKL & SONS/GENERAL IRON	KENNEDY, INBOUND, AT ARMITAGE
26	GOOSE ISLAND BEER COMPANY	KENNEDY, INBOUND, AT NORTH AVE ENTRANCE
27	SAM'S WINE AND SPIRITS	KENNEDY, INBOUND, AT NORTH AVE EXIT
28	CHRISTY WEBBER & CO.	KENNEDY, INBOUND, AT DIVISION
29	THE JOHN BUCK COMPANY	KENNEDY, INBOUND, AT OGDEN EXIT
30	YELLOW CAB	KENNEDY, SOUTHBOUND, GRAND TO HUBBARD
31	KIMPTON HOTELS	KENNEDY, SOUTHBOUND, FULLERTON TO LAKE
32	CLEAR CHANNEL	KENNEDY, SOUTHBOUND, RANDOLPH TO WASHINGTON
33	HORSESHOE CASINO	KENNEDY, SOUTHBOUND, WASHINGTON TO MADISON
34	RPM ADVERTISING	KENNEDY, SOUTHBOUND, MADISON TO MONROE
35	CHICAGO FIREHOUSE	KENNEDY, SOUTHBOUND, MONROE TO ADAMS
36	NBC	KENNEDY, NORTHBOUND, RANDOLPH TO LAKE
37	CHCA/NCA	KENNEDY, NORTHBOUND, LAKE TO WAYMAN
38	CONCIERGE PREFERRED	KENNEDY, NORTHBOUND, HUBBARD TO GRAND
39	HOER LANDSCAPE ARCHITECTURE	EDENS, OUTBOUND, JUNCTION TO FOSTER
40	PANORAMIC LANDSCAPING	EDENS, IN/OUTBOUND, AT PETERSON EXIT/ENTERANCE RAMPS
41	NATIONAL CITY BANK	EISENHOWER, OUTBOUND, HALSTED TO ASHLAND
42	ARAMARK	EISENHOWER, OUTBOUND, WESTERN TO KEOZIE
43	COM ED	EISENHOWER, OUTBOUND, PULASKI TO CICERO
44	AMERICAN MEDICAL ASSOC.	EISENHOWER, INBOUND, LEAVITT TO DAMEN
45	RUBLOFF	EISENHOWER, INBOUND, ASHLAND TO HALSTED
46	CHICAGO PARK DISTRICT	EISENHOWER, OUTBOUND, AT CENTRAL (EXIT/ENTERANCE RAMPS)
47	CLASSIC COLOR	EISENHOWER, AT CENTRAL (MEDIANS)
48	CHINATOWN CHAMBER OF COMERCE	STEVENSON, OUTBOUND, AT STATE ST. EXIT
49	MIDWEST GENERATION	STEVENSON, OUTBOUND, AT PULASKI EXIT
50	SOUTHWEST AIRLINES	STEVENSON, OUTBOUND, AT CICERO ENTRANCE
51	CANADIAN NAT'L/ILL. CENTRAL RR	STEVENSON, INBOUND, AT CICERO
52	CHICAGO WHITE SOX	DAN RYAN, OUTBOUND, 31st ST. TO 39th ST.
53	ILL. SPORTS FACILITIES AUTHORITY	DAN RYAN, OUTBOUND, 39th ST. TO 47th ST.
54	ILLINOIS INSTITUTE OF TECHNOLOGY	DAN RYAN, INBOUND, 39th ST. TO 31st. ST.
55	HORSESHOE CASINO	DAN RYAN, POLK ST. MEDIANS
56	UNITED SERVICE COMPANIES	OHIO INTERCHANGE, NORTHBOUND INTERIOR
57	IO PIN	KENNEDY, SOUTHBOUND, AT OHIO ST. EXIT, EASTSIDE
58	HYATT HOTELS & RESORTS	OHIO INTERCHANGE, SOUTHBOUND INTERIOR
59	NEIGHBORS OF RIVER WEST	OHIO INTERCHANGE, ONTARIO ENTRANCE, SOUTH SIDE
60	TUSCANY RESTRAUNT	OHIO INTERCHANGE, ONTARIO ENTRANCE, NORTH SIDE
61	KINSELLA LANDSCAPE	OHIO INTERCHANGE, SOUTHEAST RAMP
62	BP	EDENS/KENNEDY JUNCTION
63	WASTE MANAGMENT	BISHOP FORD, AT 111th ST., WEST SIDE
64	MCCORMICK GATEWAY SCULPTURE	CERMAK/MARTIN LUTHER KING DRIVE
65	HARRY CARAY'S/ DePORTER GATEWAY	OHIO/ORLEANS TRIANGLE, INBOUND



LIMITS OF SIGN CLEANING



REVISIONS	
NAME	DATE

ILLINOIS DEPARTMENT OF TRANSPORTATION
EXPRESSWAY AND ARTERIAL HIGHWAY
CLEANING (SWEEPING)

**LIMITS OF
SIGN CLEANING**

SCALE: NONE
DATE: 7/21/2005

DRAWN BY
CHECKED BY

F. & A. SHEET	SECTION	COUNTY	TOTAL SHEETS	SHEET NO.
VAR.	2004-090 I	VARIOUS	21	8
STA.	TO STA.			
FED. ROAD DIST. NO.	ILLINOIS	FED. AID PROJECT		

CONTRACT 62830

DAY CLEANING ONLY

Eisenhower Expressway

Interstate 290 from Wells St. to Austin Blvd. in its entirety, from Austin Blvd. to 25th Ave. right hand side and all ramps, the eastbound collector-distributor lanes and all ramps at the U.S. 12/20/45 (Mannheim Rd.) Interchange and to Roosevelt Rd. on its extension and Lower Wacker Dr. from Lake St. to the Eisenhower Expressway.

Stevenson Expressway

Interstate 55 from Lake Shore Drive to Weber Road, including all ramps to and from Illinois Route 53. Also included are the ramps and collector-distributor lanes at the Route 83 Interchange; and First Avenue, from 43rd Street to Archer Avenue. Also included are the ramps to and from Joliet Road from I-55 to east of the N.B. Tollway bridge and the ramps NB I-55 to NB Tollway and from SB Tollway to NB I-55. (Limits of cleaning on these ramps are from I-55 to the first median crossover north of Joliet Rd.)

ACCIDENT INVESTIGATION SITES:

FOR LOCATIONS 1-10, SEE INNER CITY EXPRESSWAY (NORTH SECTION)

- 11. INBOUND INTERSTATE 55 AT HALSTED STREET
- 12. OUTBOUND INTERSTATE 55 AT THROOP STREET
- 13. INBOUND INTERSTATE 55 AT WOOD STREET. (LOCATED UNDER I-55)
- 14. OUTBOUND INTERSTATE 55 AT KEDZIE AVENUE

NIGHT CLEANING ONLY

Eisenhower Expressway

Interstate 290 from Austin Blvd. to 25th Ave. left hand side only and from 25th Ave. to Ill. 83 including the ramps in its entirety except the eastbound collector-distributor lanes at the U.S. 12/20/45 Interchange and to Roosevelt Rd. on its extension.

Dan Ryan Expressway

Interstate 94 from Taylor Street to Cottage Grove Avenue, Interstate 57 from Interstate 94 to Halsted Street and Franklin Street connector from 22nd Street to Interstate 94

- DISTRICT NO. 1
- STATE HIGHWAYS & EXPRESSWAYS WITHIN STATE JURISDICTION (EXCEPT TOLLWAYS)
 - STATE HIGHWAYS & EXPRESSWAYS TO BE CLEANED
 - FUTURE HIGHWAYS
 - VARIOUS AGENCIES HIGHWAYS

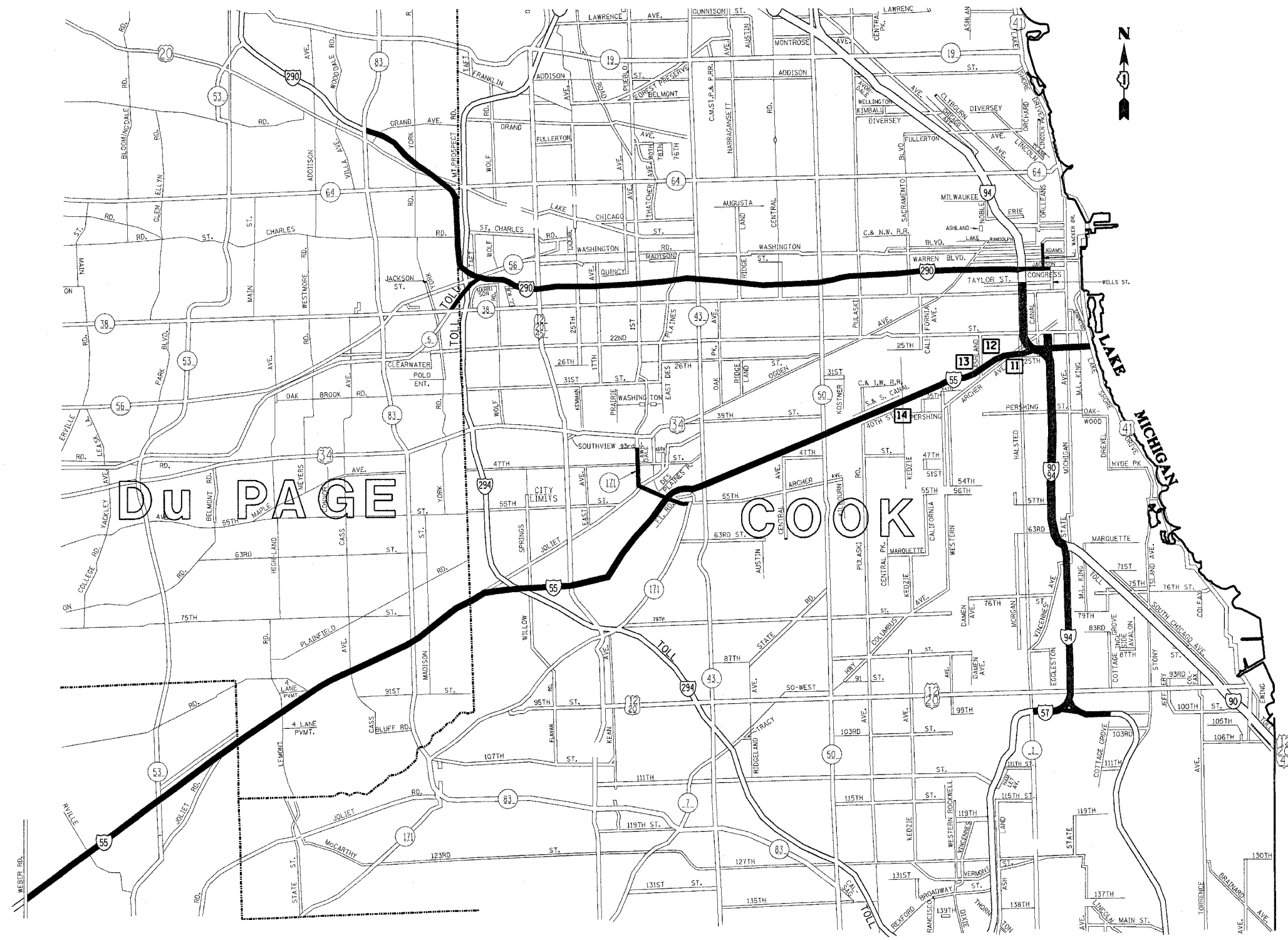
REVISIONS	
NAME	DATE

ILLINOIS DEPARTMENT OF TRANSPORTATION

EXPRESSWAY CLEANING LOCATION MAP
EISENHOWER, STEVENSON & DAN RYAN

SCALE: 1"=1.5 MILES
DATE: 7/21/2005

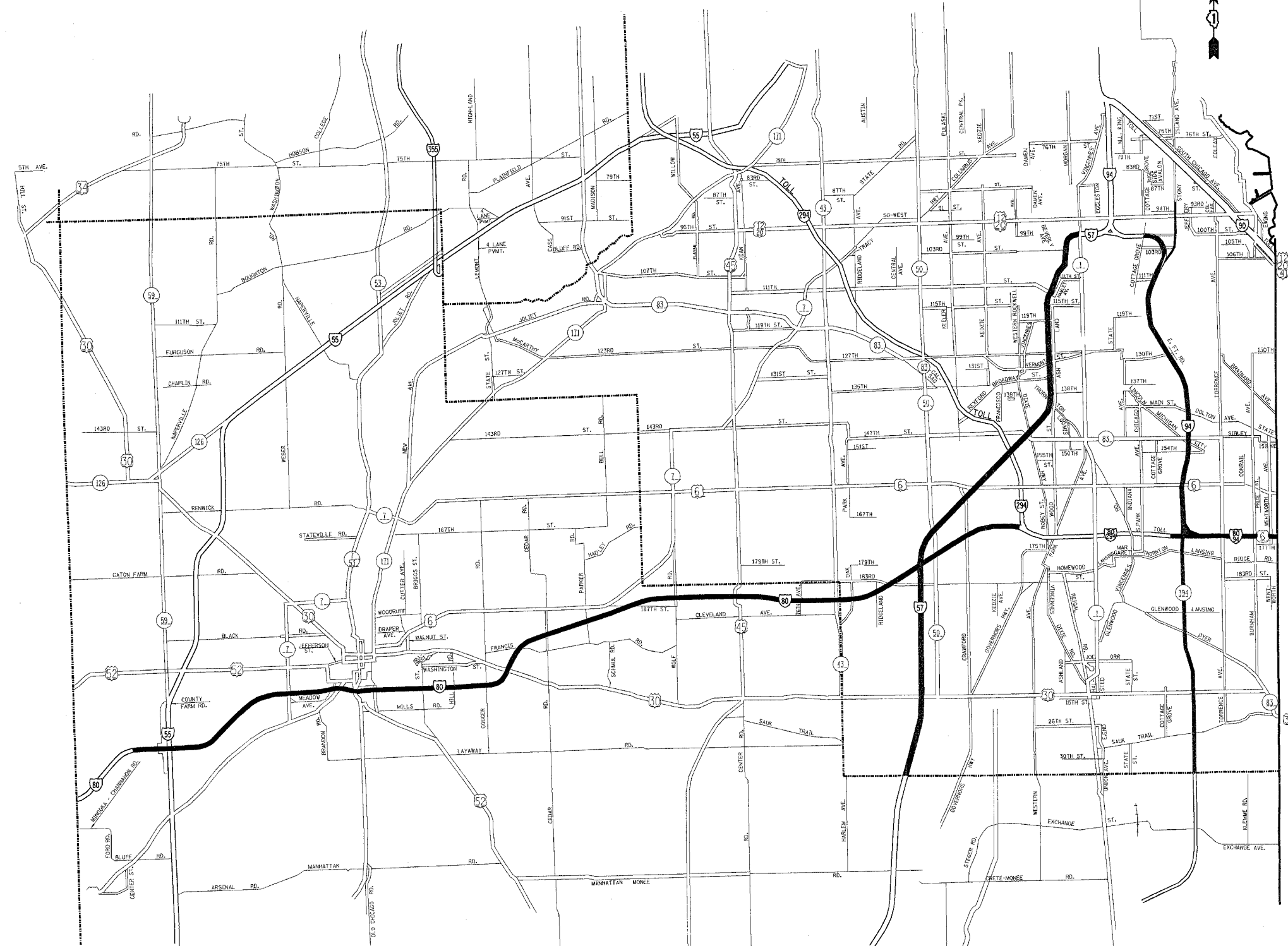
DRAWN BY
CHECKED BY



7/21/2005 14:55:24 01/11/000

F. A. SHEET NO.	SECTION	COUNTY	TOTAL SHEETS	SHEET NO.
VAR.	2004-090 1	VARIOUS	21	9
STA.	TO STA.			
FED. ROAD DIST. NO.	ILLINOIS	FED. AID PROJECT		

CONTRACT 62830



DAY CLEANING ONLY

Bishop Ford/Kingery Expressway
Interstate 94 from Cottage Grove Avenue to the Indiana State line excluding northbound left hand side from Cottage Grove Ave. to 103rd St., Illinois 394 from Interstate 94 to the Cook-Will County line and the entire Stony Island Avenue - 103rd Street Interchange. Interstate 80 from Interstate 94 to Interstate 294.

I-57 Expressway
Interstate 57 from Halsted Street to Steger Road including the entire I-57 - I-80 Interchange.

I-80 Expressway
Interstate 80 from Interstate 294 to the Dupage River (west of Interstate 55)

NIGHT CLEANING ONLY

Bishop Ford Expressway
Interstate 94 from 103rd St. to Cottage Grove Ave. northbound left hand side only.

- DISTRICT NO. 1
- STATE HIGHWAYS & EXPRESSWAYS WITHIN STATE JURISDICTION (EXCEPT TOLLWAYS)
 - STATE HIGHWAYS & EXPRESSWAYS TO BE CLEANED
 - FUTURE HIGHWAYS
 - VARIOUS AGENCIES HIGHWAYS

INDIANA

REVISIONS	
NAME	DATE

ILLINOIS DEPARTMENT OF TRANSPORTATION
EXPRESSWAY CLEANING LOCATION MAP
BISHOP FORD, KINGERY, I-57 AND I-80

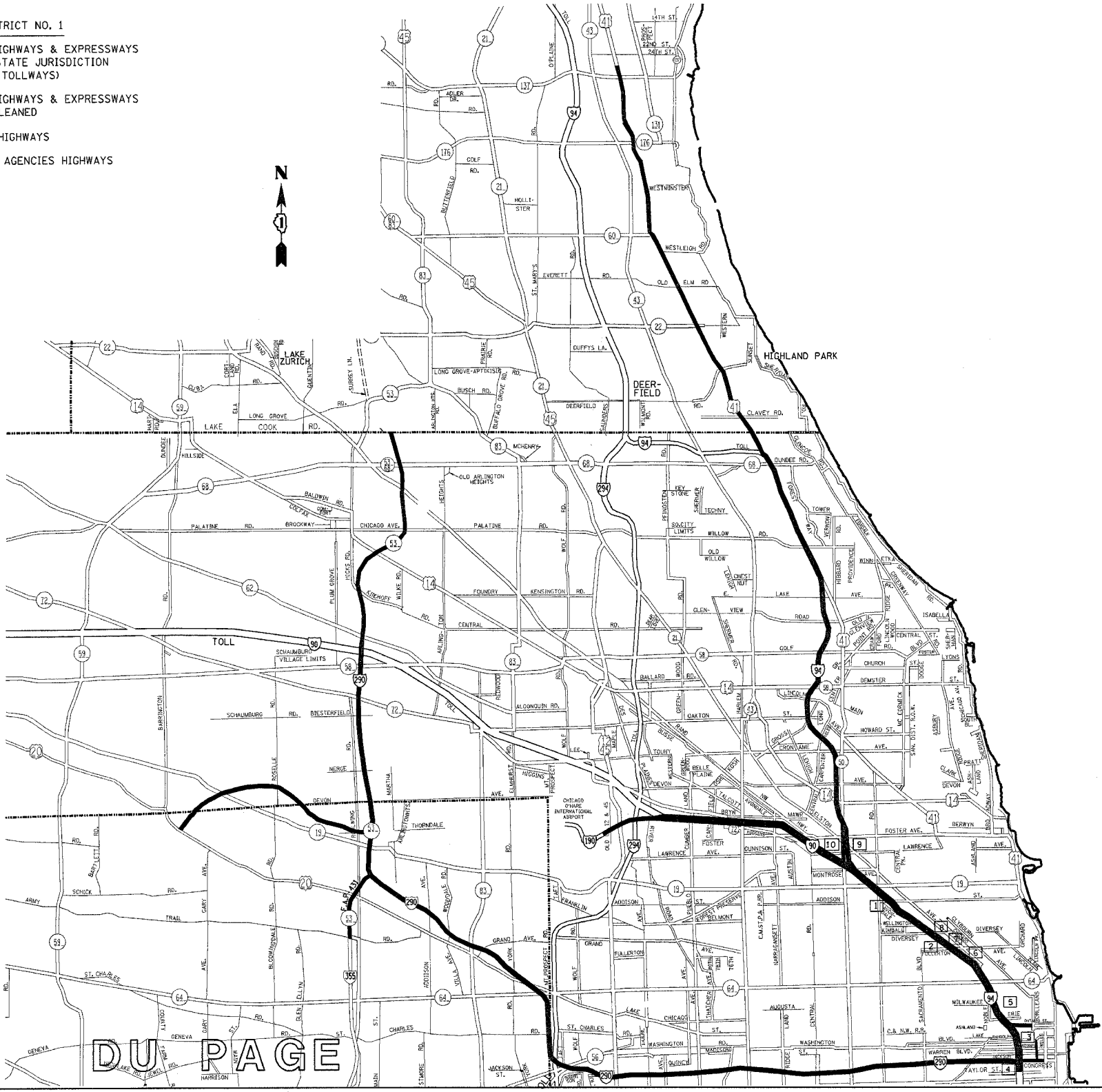
SCALE: 1"=1.5 MILES
DATE: 7/21/2005
DRAWN BY
CHECKED BY

ML2/0808a.mxd 14:33:53 07/21/2005

F. A. NO.	SECTION	COUNTY	TOTAL SHEETS	SHEET NO.
VAR.	2004-090 I	VARIOUS	21	10
STA.	TO STA.			
FED. ROAD DIST. NO.	ILLINOIS	FED. AID PROJECT		

CONTRACT 62830

- DISTRICT NO. 1
- STATE HIGHWAYS & EXPRESSWAYS WITHIN STATE JURISDICTION (EXCEPT TOLLWAYS)
 - STATE HIGHWAYS & EXPRESSWAYS TO BE CLEANED
 - FUTURE HIGHWAYS
 - VARIOUS AGENCIES HIGHWAYS



DAY CLEANING ONLY

Edens Expressway
 Interstate 94 from Montrose to Dundee Road and U.S. 41 from Dundee Road to 700 lineal feet north of Illinois 137 including two ramps at Clavey Road, two ramps at West Park Avenue, four ramps at Deerpath Road and the entire US 41/Deerfield Road Interchange. Also included is Tower Road from Edens Expressway to Forestway Drive.

Eisenhower Expressway
 Interstate 290 and its appurtenances from Wells St. to Austin Blvd. in its entirety, from Austin Blvd. to 25th Ave. right hand side and all ramps, the eastbound collector-distributor lanes and all ramps at the U.S. 12/20/45 (Mannheim Rd.) Interchange and to Roosevelt Rd. on its extension and Lower Wacker Dr. from Lake St. to the Eisenhower Expressway.

I-290 Extension/IL. 53
 Interstate 290 Extension from Illinois 83 to Northwest Tollway, Illinois 53 from Northwest Tollway to Lake Cook Rd. including I-355 from I-290 to Army Trail Rd.

Interstate 57
 Interstate 57 from Halsted Street to I-80 including the entire I-57 - I-80 Interchange

Stevenson Expressway
 Interstate 55 from Lake Shore DR. to Illinois 43 (Harlem Avenue)

NIGHT CLEANING ONLY

Eisenhower Expressway
 Interstate 290 from Austin Blvd. to 25th Ave. left hand side only and 25th Ave. to Illinois 83 including the ramps in its entirety except the eastbound collector-distributor lanes at the U.S. 12/20/45 Interchange and to Roosevelt Rd. on its extension.

Kennedy Expressway
 Interstate 90/94 from Taylor Street to Interstate 90, Interstate 90 from Interstate 90/94 to Interstate 190, Interstate 190 from Interstate 90 to the east limits of O'Hare International Airport, the Ohio Street Feeder, from Orleans Street to Interstate 90/94, I-90 from I-190 to the Tollway turn around.

ACCIDENT INVESTIGATION SITES:
 FOR LOCATIONS 11-14, SEE INNER CITY EXPRESSWAY (SOUTH SECTION)

1. INBOUND INTERSTATE 90/94 AT ADDISON STREET OFF RAMP.
2. INBOUND INTERSTATE 90/94 ALONG FULLERTON AVENUE UNDER INTERSTATE 90/94.
3. INBOUND INTERSTATE 90/94 IN THE OHIO STREET INFIELD.
4. INTERSTATE 90/94 AT POLK AVENUE.
5. OUTBOUND INTERSTATE 90/94 ALONG DIVISION STREET OFF RAMP.
6. OUTBOUND INTERSTATE 90/94 ALONG INTERSTATE 90/94 AT DAMEN AVENUE.
7. OUTBOUND INTERSTATE 90/94 ALONG FULLERTON AVENUE UNDER INTERSTATE 90/94.
8. OUTBOUND INTERSTATE 90/94 ALONG KIMBALL STREET OFF RAMP.
9. OUTBOUND INTERSTATE 94 ALONG FOSTER AVENUE OFF RAMP.
10. OUTBOUND INTERSTATE 90/94 JUST BEFORE LAWRENCE AVENUE OFF RAMP.

DU P A G E

FOR INNER CITY EXPRESSWAY (SOUTH SECTION) SEE SHEET NUMBER-----

REVISIONS	
NAME	DATE

ILLINOIS DEPARTMENT OF TRANSPORTATION

INNER CITY EXPRESSWAY
 LOCATION MAP
 (NORTH SECTION)

SCALE: 1"=1.9 MILES
 DATE: 7/21/2005

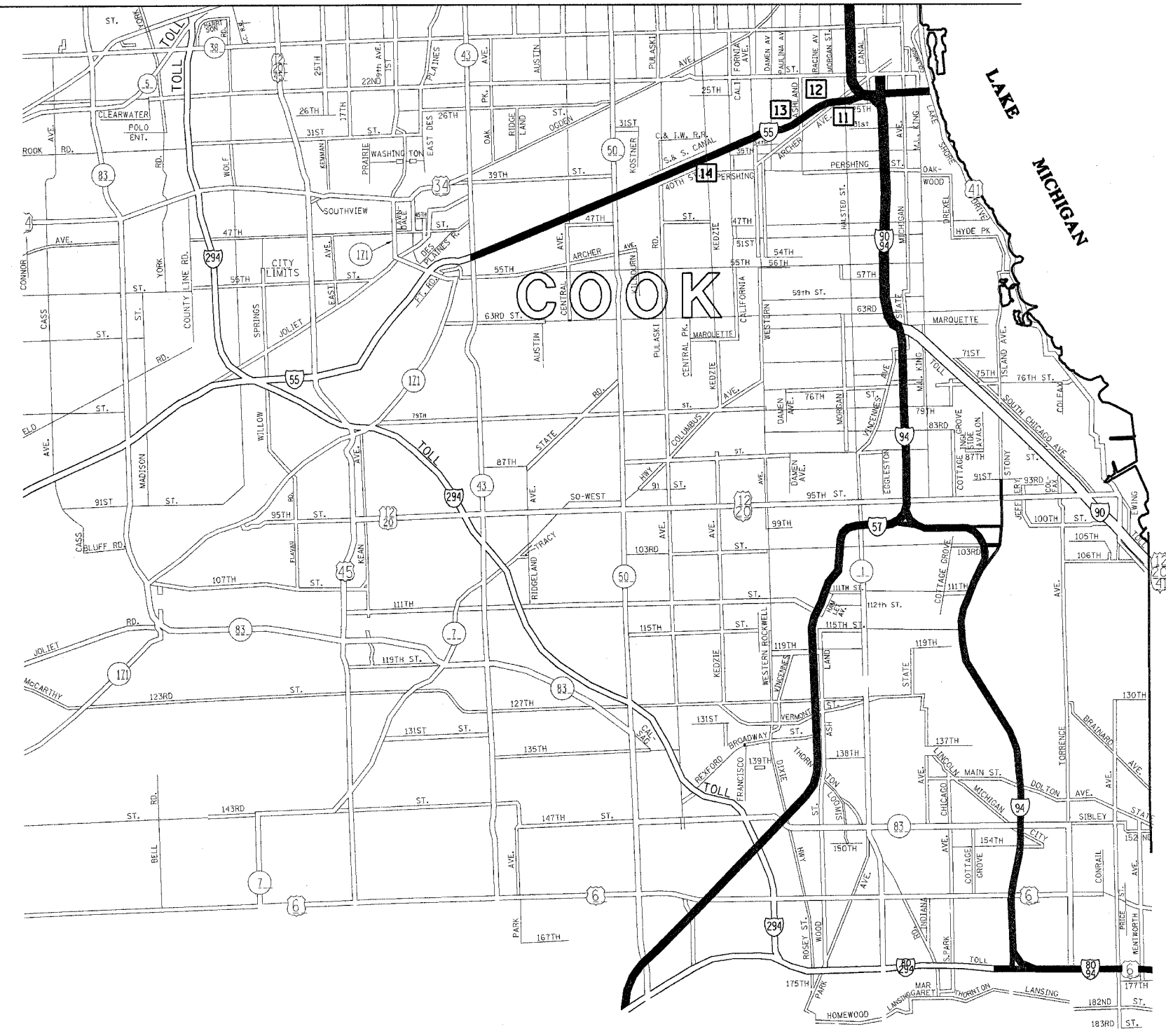
DRAWN BY CADD
 CHECKED BY

ML2/988aa.mxd: 14:36:17 01/21/2005

F. A. DIST.	SECTION	COUNTY	TOTAL SHEETS	SHEET NO.
VAR.	2004-090 I	VARIOUS	21	11
STA.		TO STA.		
FED. ROAD DIST. NO.	MILES	FED. AID PROJECT		

CONTRACT 62830

FOR INNER CITY EXPRESSWAY (NORTH SECTION) SEE SHEET NUMBER-----



DAY CLEANING ONLY

Bishop Ford/Kingery Expressway

Interstate 94 from Cottage Grove Ave to the Indiana State line excluding northbound left hand side Cottage Grove Ave to 103rd Street, Illinois 394 from Interstate 94 to the Cook-Will County line and the entire Stony Island Ave. -103rd Street Interchange. Interstate 80 from Interstate 94 to Interstate 294.

I-57 Expressway

Interstate 57 from Halsted St. to Interstate 80 including the entire I-57 - I-80 Interchange

Stevenson Expressway

Interstate 55 from Lake Shore Drive to Illinois Route 43 (Harlem Ave.)

ACCIDENT INVESTIGATION SITES:

FOR LOCATIONS 1-10, SEE INNER CITY EXPRESSWAY (NORTH SECTION)

- 11. INBOUND INTERSTATE 55 AT HALSTED STREET
- 12. OUTBOUND INTERSTATE 55 AT THROOP STREET
- 13. INBOUND INTERSTATE 55 AT WOOD STREET. (LOCATED UNDER I-55)
- 14. OUTBOUND INTERSTATE 55 AT KEDZIE AVENUE

NIGHT CLEANING ONLY

Dan Ryan Expressway

Interstate 94 from Taylor Street to Cottage Grove Avenue. Interstate 57 from Interstate 94 to Halsted Street and Franklin Street connector from 22nd Street to Interstate 94.

Bishop Ford Expressway

Interstate 94 from 103rd Street to Cottage Grove Avenue northbound left hand side only.

- DISTRICT NO. 1
- STATE HIGHWAYS & EXPRESSWAYS WITHIN STATE JURISDICTION (EXCEPT TOLLWAYS)
 - STATE HIGHWAYS & EXPRESSWAYS TO BE CLEANED
 - FUTURE HIGHWAYS
 - VARIOUS AGENCIES HIGHWAYS
 - ACCIDENT INVESTIGATION SITE TO BE CLEANED

REVISIONS	
NAME	DATE

ILLINOIS DEPARTMENT OF TRANSPORTATION

**INNER CITY EXPRESSWAY
LOCATION MAP
(SOUTH SECTION)**

SCALE: 1"=1.22 MILES
DATE: 7/21/2005

DRAWN BY
CHECKED BY

m127988aa.mxd: 14:46:34 01/21/2005

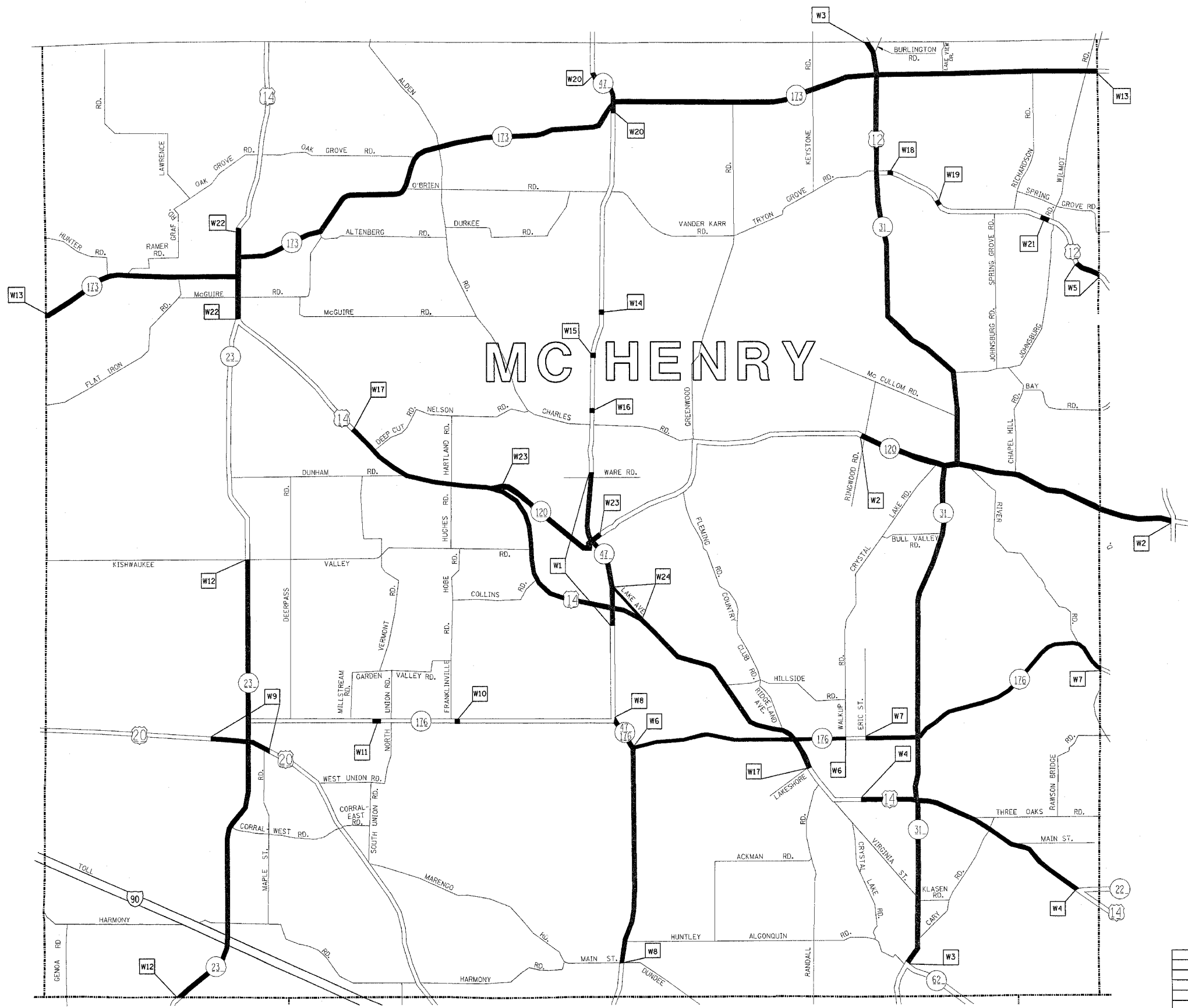
F. A. NO.	SECTION	COUNTY	TOTAL SHEETS	SHEET NO.
VAR.	2004-090 I	VARIOUS	21	12
STA.	TO STA.			
FED. ROAD DIST. NO.	BLDG.	FED. AID PROJECT		

CONTRACT NO. 62830



TEAM SECTION
WOODSTOCK

KEY LOCATIONS
W1 - W24



- DISTRICT NO. 1
- STATE HIGHWAYS & EXPRESSWAYS WITHIN STATE JURISDICTION (EXCEPT TOLLWAYS)
 - STATE HIGHWAYS & EXPRESSWAYS TO BE CLEANED
 - - - FUTURE HIGHWAYS
 - VARIOUS AGENCIES HIGHWAYS

ILLINOIS DEPARTMENT OF TRANSPORTATION

ARTERIAL CLEANING
LOCATION MAP
MC HENRY COUNTY
WOODSTOCK TEAM SECTION

REVISIONS	
NAME	DATE

SCALE: VERT. 1"=1.5 MILES
HORIZ. 1"=1.5 MILES
DATE: 7/21/2005

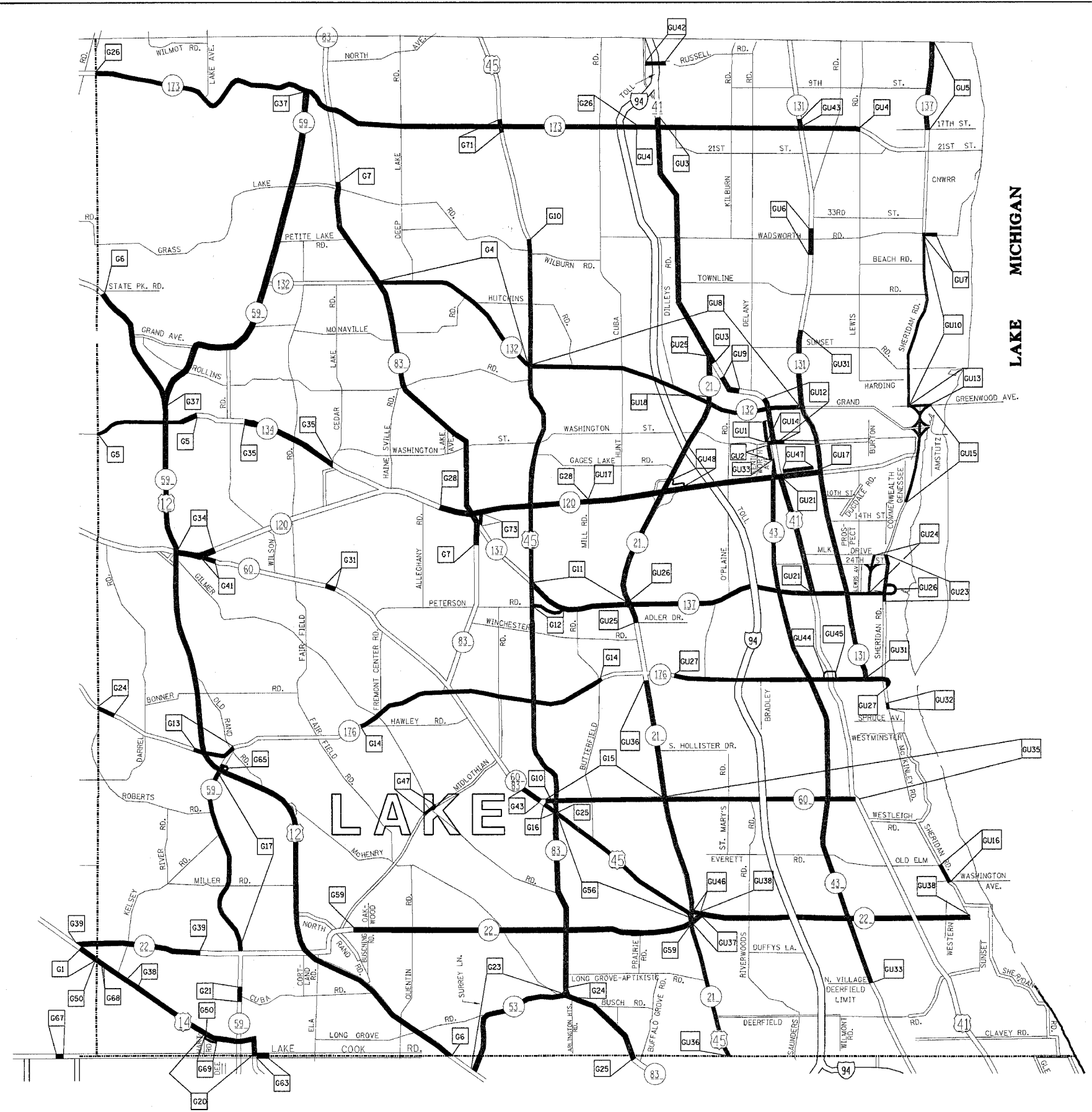
DRAWN BY CADD
CHECKED BY

F. A. RTE.	SECTION	COUNTY	TOTAL SHEETS	SHEET NO.
VAR.	2004-090 I	VARIOUS	21	13
STA.	TO STA.			
FED. ROAD DIST. NO.	ILLINOIS	FED. AID PROJECT		

CONTRACT NO. 62830



TEAM SECTION	KEY LOCATIONS
GRAYSLAKE	G1 - G73
GURNEE	G1 - GU48



- DISTRICT NO. 1
- STATE HIGHWAYS & EXPRESSWAYS WITHIN STATE JURISDICTION (EXCEPT TOLLWAYS)
 - STATE HIGHWAYS & EXPRESSWAYS TO BE CLEANED
 - - - FUTURE HIGHWAYS
 - VARIOUS AGENCIES HIGHWAYS

ILLINOIS DEPARTMENT OF TRANSPORTATION

ARTERIAL CLEANING
LOCATION MAP
LAKE COUNTY
GRAYSLAKE AND GURNEE TEAM SECTIONS

SCALE: 1"=1.5 MILES
DATE: 7/21/2005

DRAWN BY
CHECKED BY

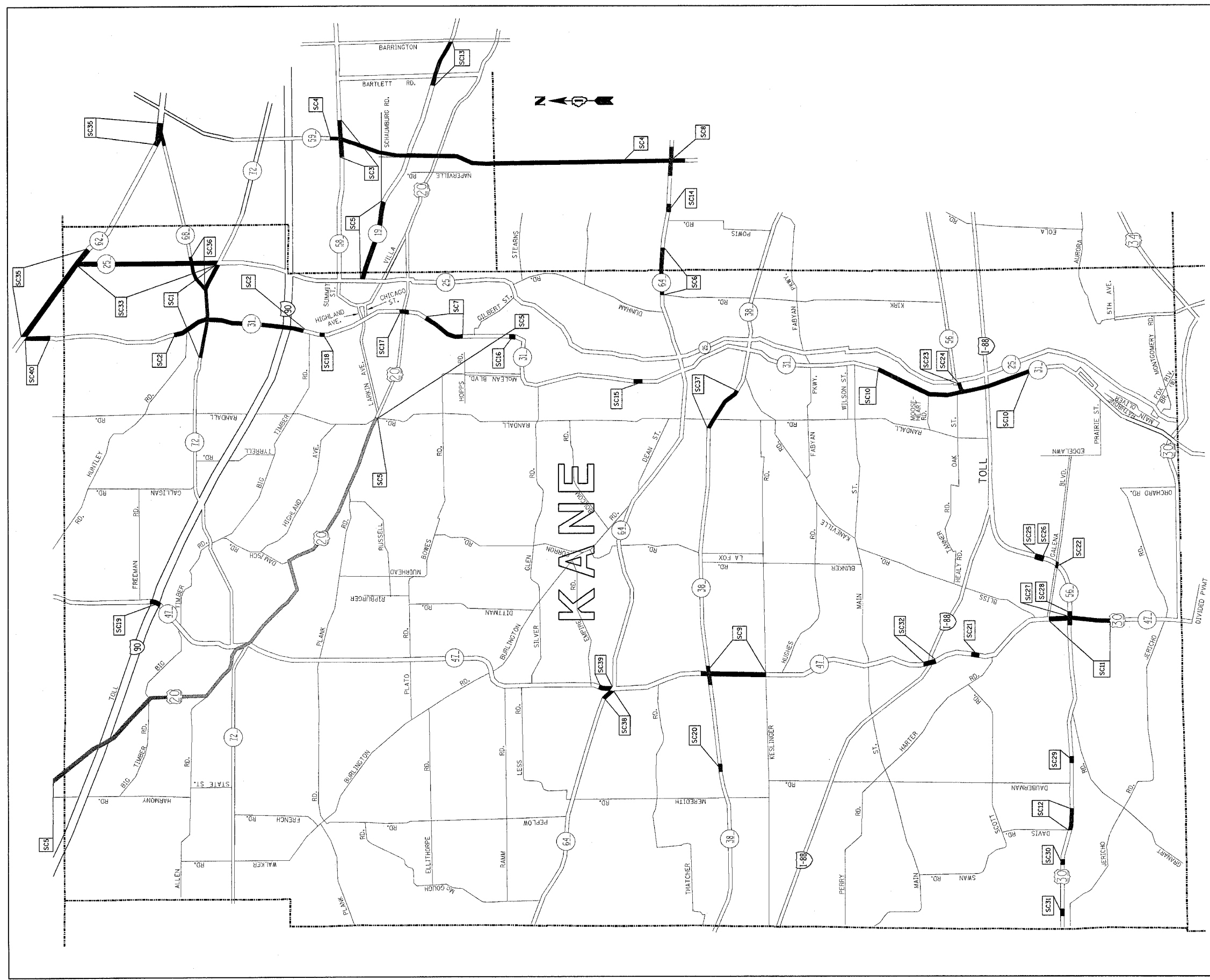
REVISIONS	
NAME	DATE

7/21/2005
 c:\projects\m127988\m127988oc.m32
 403199.1892844_V1=AKF

F. & A. RITE.	SECTION	COUNTY	TOTAL SHEETS	SHEET NO.
VAR.	2004-090 I	VARIOUS	21	14
STA.		TO STA.		
FED. ROAD DIST. NO.	ALINOS	FED. AID PROJECT		

CONTRACT NO. 62830

TEAM SECTION	KEY LOCATIONS
ST. CHARLES	SC1 - SC39



- DISTRICT NO. 1
- STATE HIGHWAYS & EXPRESSWAYS WITHIN STATE JURISDICTION (EXCEPT TOLLWAYS)
 - STATE HIGHWAYS & EXPRESSWAYS TO BE CLEANED
 - FUTURE HIGHWAYS
 - VARIOUS AGENCIES HIGHWAYS

REVISIONS	
NAME	DATE

ILLINOIS DEPARTMENT OF TRANSPORTATION
**ARTERIAL CLEANING
 LOCATION MAP
 KANE COUNTY
 ST. CHARLES TEAM SECTIONS**

SCALE: 1"=1.5 MILES
 DATE: 7/21/2005

DRAWN BY: CADD
 CHECKED BY:

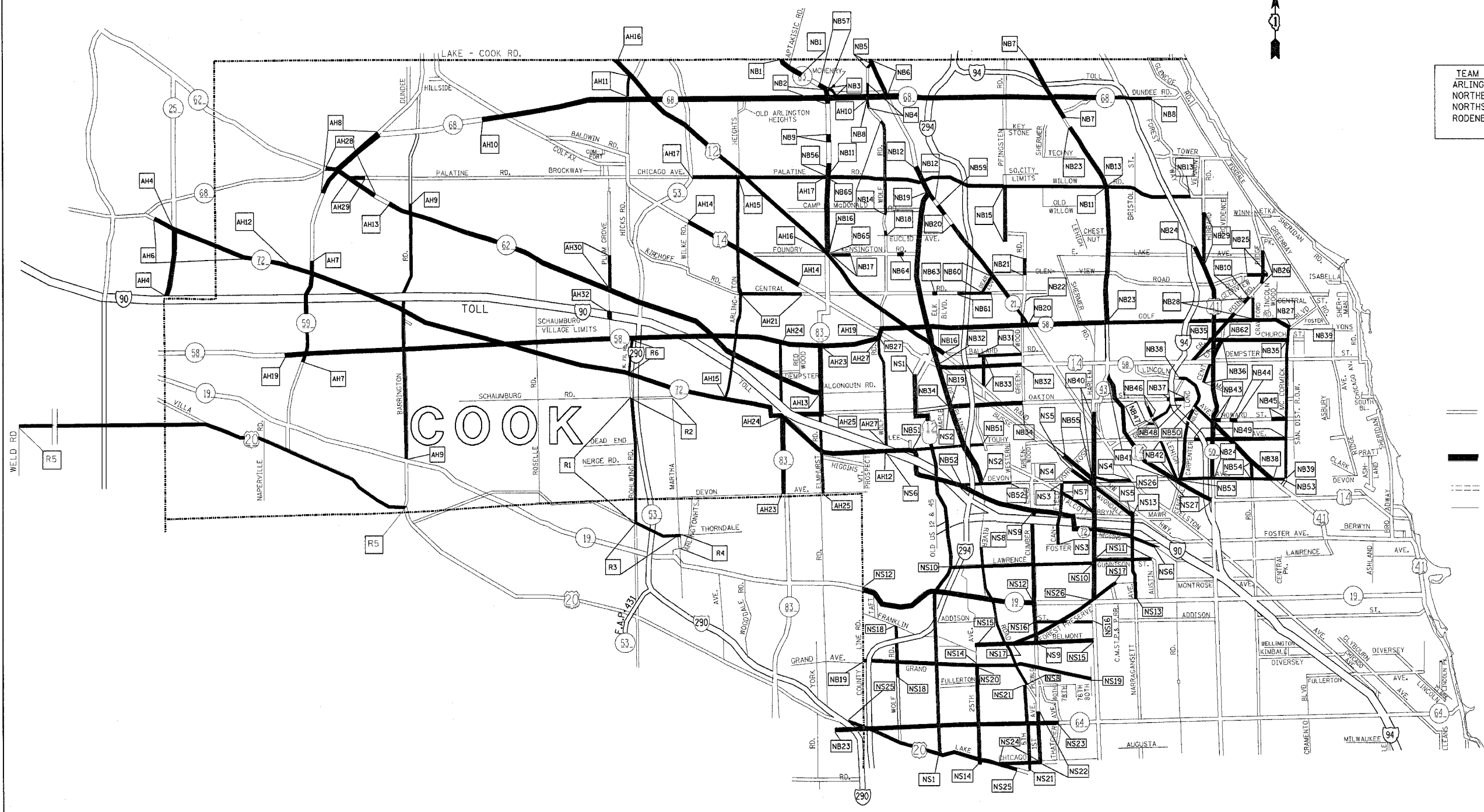
m127988aa.m32: 14:37:38 07/21/2005

F. & A. RITE.	SECTION	COUNTY	TOTAL SHEETS	SHEET NO.
VAR.	2004-090 I	VARIOUS	21	15
STA.		TO STA.		
FED. ROAD DIST. NO.	ILLINOIS	FED. AID PROJECT		

CONTRACT NO. 62830



TEAM SECTION	KEY LOCATIONS
ARLINGTON HTS.	AH1-AH32
NORTHBROOK	NB1-NB65
NORTHSIDE	NS1-NS27
RODENBURG	R1-R6



- DISTRICT NO. 1
- STATE HIGHWAYS & EXPRESSWAYS WITHIN STATE JURISDICTION (EXCEPT TOLLWAYS)
 - STATE HIGHWAYS & EXPRESSWAYS TO BE CLEANED
 - - - FUTURE HIGHWAYS
 - VARIOUS AGENCIES HIGHWAYS

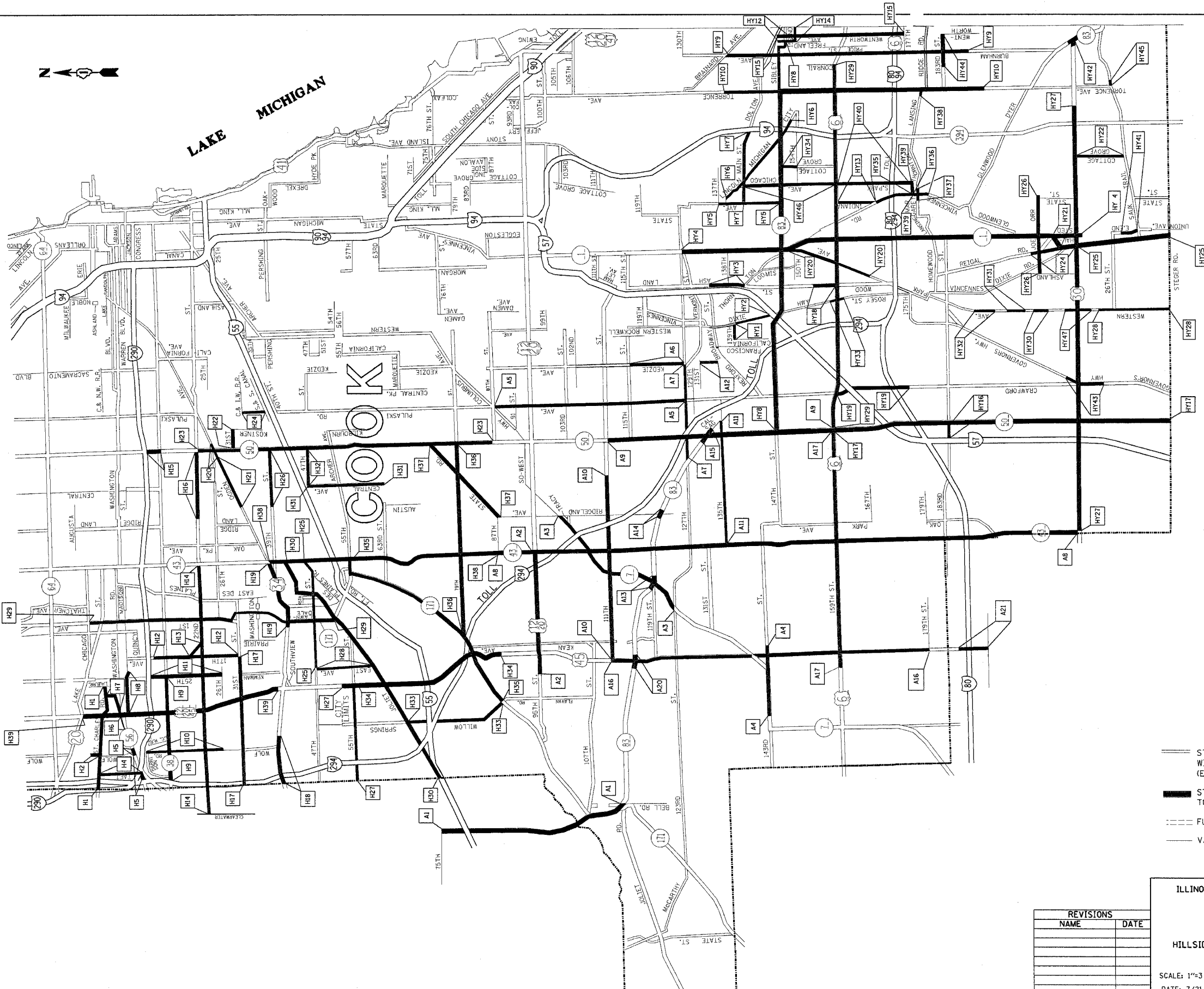
REVISIONS	
NAME	DATE

ILLINOIS DEPARTMENT OF TRANSPORTATION
 ARTERIAL CLEANING
 LOCATION MAP
 COOK COUNTY NORTH OF & INCLUDING
 ILL. RTE. 64 (NORTH AVE.)
 ARLINGTON, NORTHBROOK, NORTHSIDE
 AND I-290 ARTERIAL
 TEAM SECTIONS

SCALE: 1"=3 MILES
 DATE: 7/21/2005

DRAWN BY
 CHECKED BY

7/21/2005
 c:\projects\m127988\m127988aa.mxd
 V:\NCOOK



F.A. PTE.	SECTION	COUNTY	TOTAL SHEETS	SHEET NO.
VAR.	2004-090 I	VARIOUS	21	16
STA.		TO STA.		
FED. ROAD DIST. NO.	ILLINOIS	FED. AID PROJECT		

CONTRACT NO. 62830

TEAM SECTION	KEY LOCATIONS
HILLSIDE	H1-H39
ALSIP	A1-A21
HARVEY	HY1-HY47

- DISTRICT NO. 1
- STATE HIGHWAYS & EXPRESSWAYS WITHIN STATE JURISDICTION (EXCEPT TOLLWAYS)
 - STATE HIGHWAYS & EXPRESSWAYS TO BE CLEANED
 - FUTURE HIGHWAYS
 - VARIOUS AGENCIES HIGHWAYS

ILLINOIS DEPARTMENT OF TRANSPORTATION

ARTERIAL CLEANING
LOCATION MAP
COOK COUNTY SOUTH OF
ILL. RTE. 64 (NORTH AVE.)
HILLSIDE, ALSIP AND HARVEY TEAM SECTIONS

SCALE: 1"=3 MILES
DATE: 7/21/2005

DRAWN BY:
CHECKED BY:

REVISIONS	
NAME	DATE

ML21998aa.mxd: 14:36:47 01/14/14/000

7/21/2005
c:\projects\ml21998aa\ml21998aa.mxd
VI=SCOOK

F. A. NO.	SECTION	COUNTY	TOTAL SHEETS	SHEET NO.
VAR.	2004-090 1	VARIOUS	21	17
STA.	TO STA.			
FED. ROAD DIST. NO.	ILLINOIS	FED. AID PROJECT		

CONTRACT NO. 62830



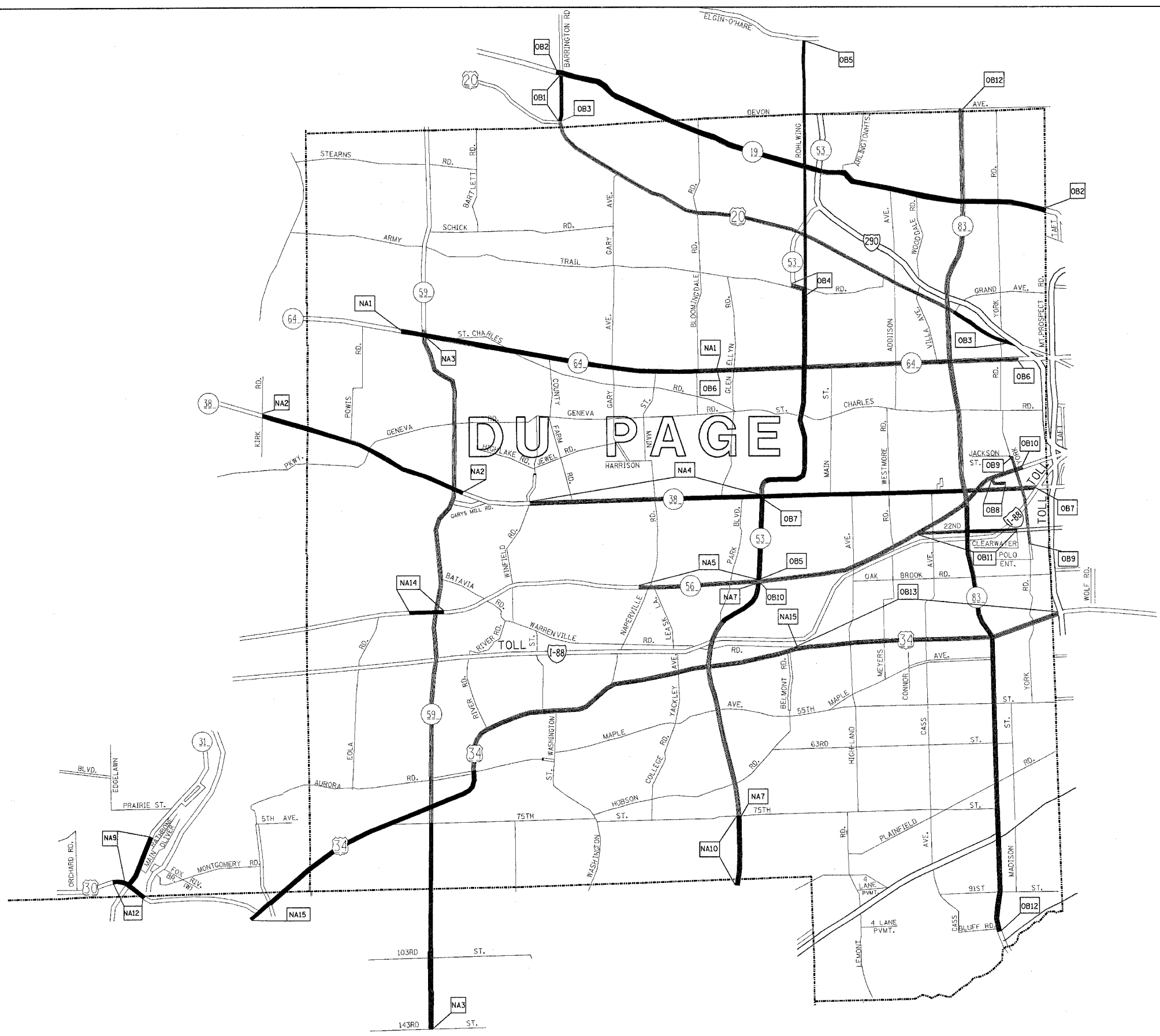
TEAM SECTION	KEY LOCATIONS
OAKBROOK	OB1-OB13
NAPERVILLE	NA1-NA15

- DISTRICT NO. 1
- STATE HIGHWAYS & EXPRESSWAYS WITHIN STATE JURISDICTION (EXCEPT TOLLWAYS)
 - STATE HIGHWAYS & EXPRESSWAYS TO BE CLEANED
 - - - FUTURE HIGHWAYS
 - VARIOUS AGENCIES HIGHWAYS

ILLINOIS DEPARTMENT OF TRANSPORTATION
 ARTERIAL CLEANING
 LOCATION MAP
 DU PAGE COUNTY
 OAKBROOK AND NAPERVILLE TEAM SECTIONS

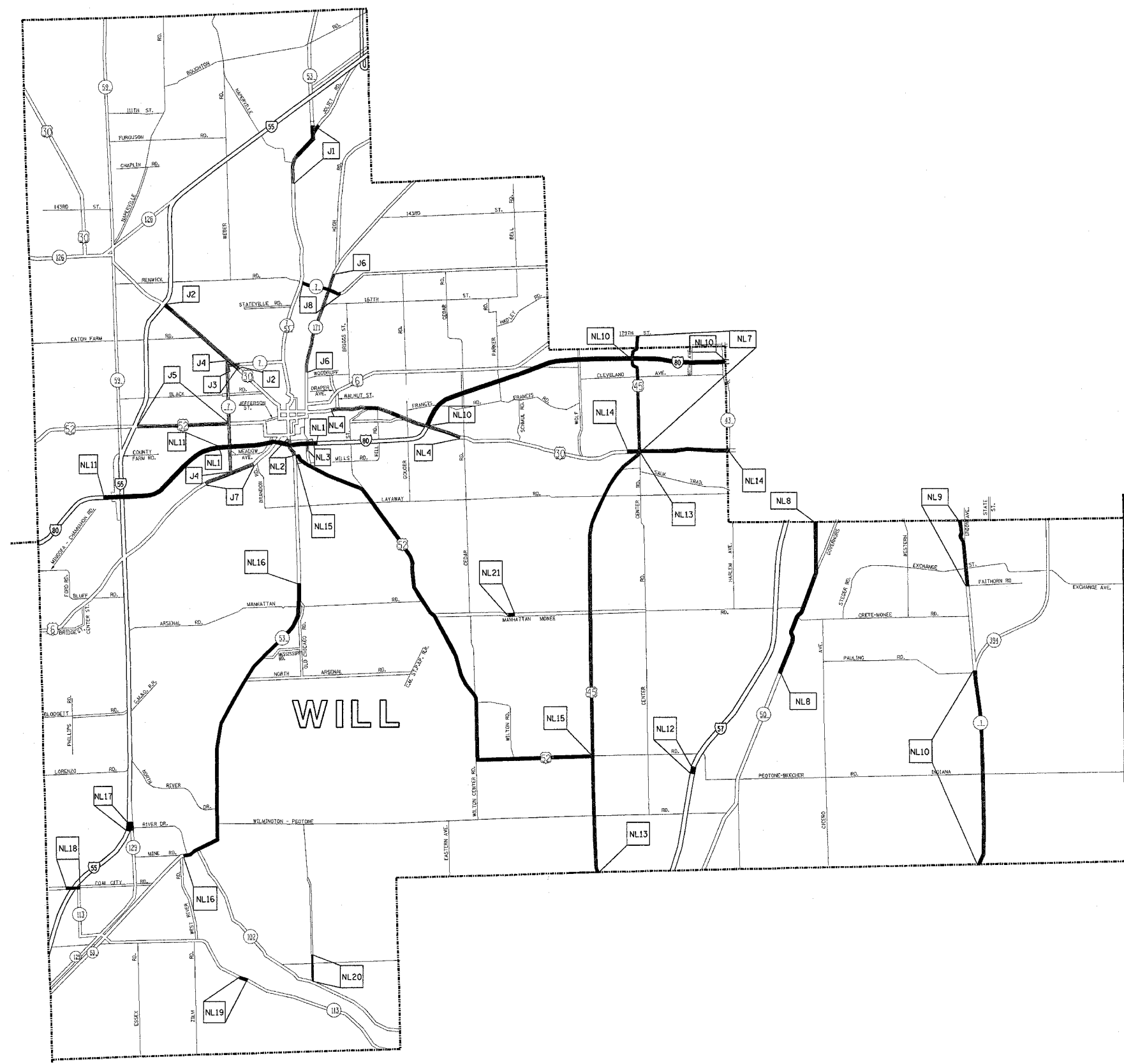
REVISIONS	
NAME	DATE

SCALE: 1"=1.5 MILES
 DATE: 7/21/2005
 DRAWN BY: CADD
 CHECKED BY:



F. A. RYL.	SECTION	COUNTY	TOTAL SHEETS	SHEET NO.
VAR.	2004-090 I	VARIOUS	21	18
STA.		TO STA.		
FED. ROAD DIST. NO.	MILES	FED. AID PROJECT		

CONTRACT NO. 62830



TEAM SECTION	KEY LOCATIONS
JOLIET	J1 - J8
NEW LENNOX	NL1 - NL21

- DISTRICT NO. 1
- STATE HIGHWAYS & EXPRESSWAYS WITHIN STATE JURISDICTION (EXCEPT TOLLWAYS)
 - STATE HIGHWAYS & EXPRESSWAYS TO BE CLEANED
 - - - FUTURE HIGHWAYS
 - VARIOUS AGENCIES HIGHWAYS

ILLINOIS DEPARTMENT OF TRANSPORTATION

ARTERIAL CLEANING
LOCATION MAP
WILL COUNTY
JOLIET AND NEW LENOX TEAM SECTION

SCALE: 1"=2 MILES
DATE: 7/21/2005

DRAWN BY: CADD
CHECKED BY:

REVISIONS	
NAME	DATE

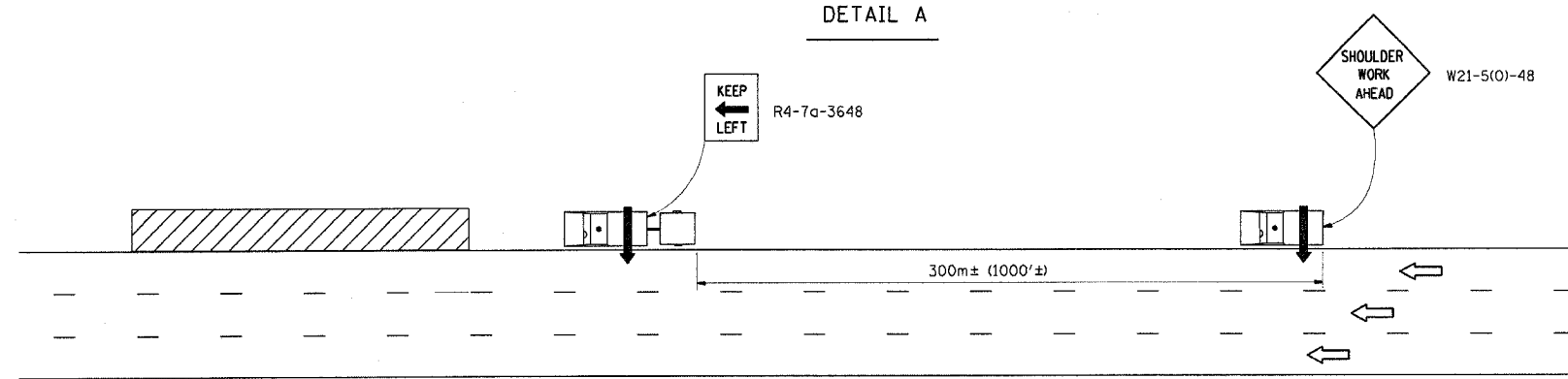
7/21/2005
c:\projects\m127988\m127988aa.m32
VI-WILL

ML17/9898a.mxd: 14:13:14 07/21/2005

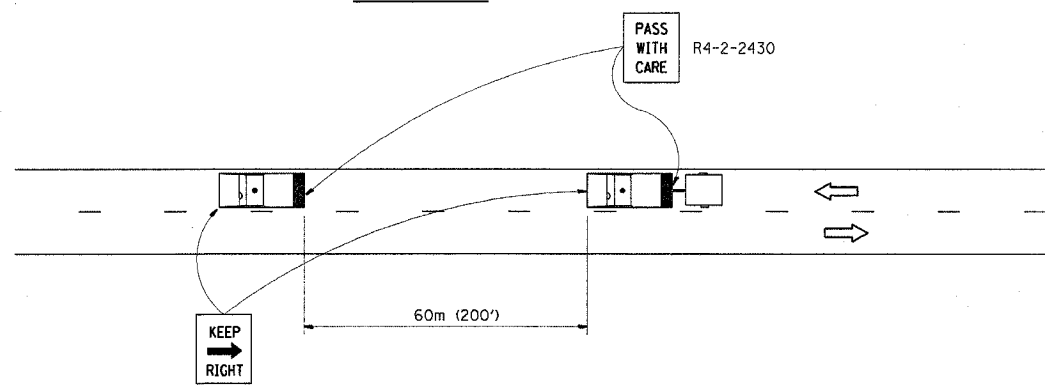
F. & E. SHEET	SECTION	COUNTY	TOTAL SHEETS	SHEET NO.
VAR.	2004-090 I	VARIOUS	21	19
STA.		TO STA.		
FED. ROAD DIST. NO.		ILLINOIS		FED. AID PROJECT

CONTRACT NO. 62830

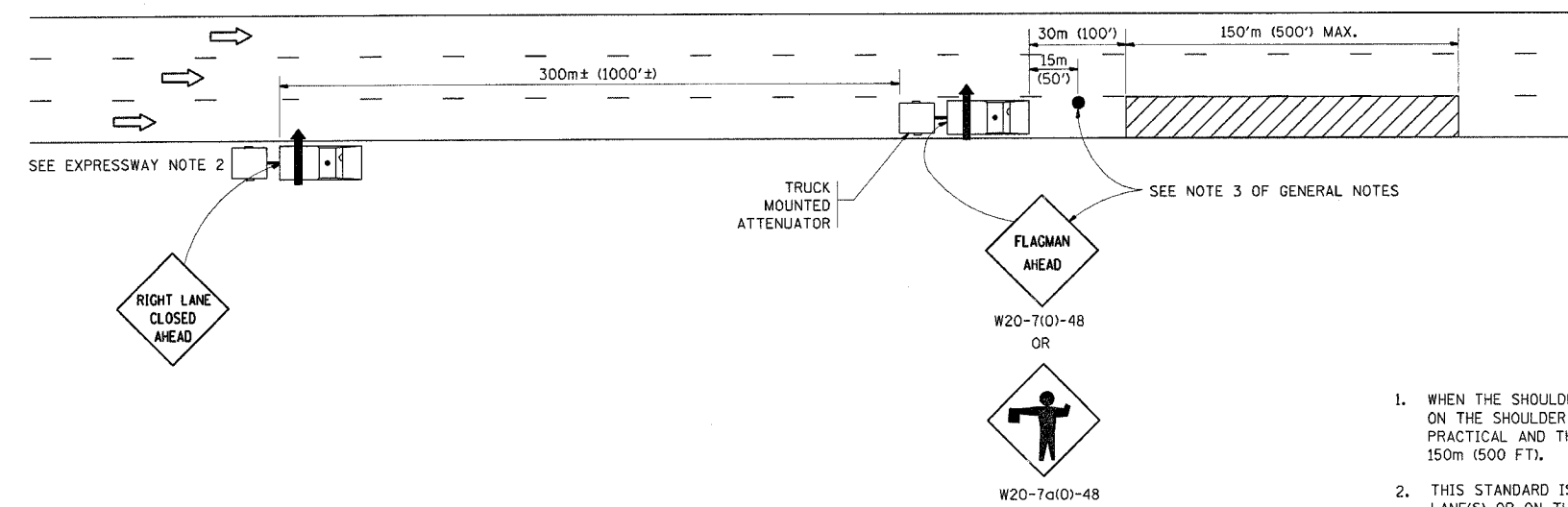
DETAIL A



DETAIL C



DETAIL B



GENERAL NOTES

1. WHEN THE SHOULDER DOES NOT EXIST, OR IS NARROW, FOLLOWING VEHICLES SHOWN ON THE SHOULDER SHALL RIDE AS CLOSE TO THE EDGE OF THE TRAVELLED WAY AS PRACTICAL AND THE SPACING TO THE NEXT VEHICLE REDUCED TO APPROXIMATELY 150m (500 FT).
2. THIS STANDARD IS ALSO APPLICABLE WHEN WORK IS BEING PERFORMED IN THE LEFT LANE(S) OR ON THE MEDIAN SHOULDER. UNDER THESE CONDITIONS, "KEEP RIGHT" SIGNS SHALL BE SUBSTITUTED FOR "KEEP LEFT" SIGNS AND ARROW BOARD INDICATIONS SHALL BE DIRECTED TO THE RIGHT.
3. WHEN FLAGGERS ARE SPECIFIED, FLAGGER SIGNS SHALL BE PLACED AS SHOWN.
4. WHEN USING DETAIL B, OR WHERE WORKERS ARE IN THE LEAD VEHICLE, OTHER THAN IN THE CAB, THE FOLLOWING VEHICLE SHALL BE POSITIONED BEHIND THE LEAD VEHICLE AND THE SPACING REDUCED TO APPROXIMATELY 150m (500 FT).
5. LONGITUDINAL DISTANCES MAY BE ADJUSTED TO FIT FIELD CONDITIONS. THE LATERAL PLACEMENT OF THE FLAGGER MAY BE VARIED FROM THAT SHOWN.
6. WATER TRUCKS USED TO CONTROL DUST PROPAGATION ARE ALLOWED TO OPERATE BY THEMSELVES. THEY SHALL AVOID SUDDEN STOPS.
7. ALL VEHICLES SHALL HAVE HEADLIGHTS AND EMERGENCY FLASHERS OPERATING AND SHALL DISPLAY AN AMBER COLORED OSCILLATING, ROTATING OR FLASHING LIGHT(S). AT LEAST ONE AMBER LIGHT IS TO BE VISIBLE FROM ANY DIRECTION.
8. ALL SWEEPERS, SIGN CLEANING TRUCKS, WATER TRUCKS AND FOLLOW VEHICLES SHALL HAVE ARROW BOARDS, AND APPROPRIATE SIGNS.

SYMBOLS

- ARROW BOARD (HAZARD MODE ONLY)
- ARROW BOARD
- FLAGGER WITH TRAFFIC CONTROL SIGNS
- WORK AREA
- TRUCK WITH FLASHING AMBER LIGHT
- TRUCK WITH FLASHING AMBER LIGHT AND TRUCK MOUNTED ATTENUATOR

EXPRESSWAY NOTES

1. A FOLLOW VEHICLE(S) WITH ARROW BOARD IS REQUIRED AT ALL TIMES.
2. TRUCK MOUNTED ATTENUATORS ARE REQUIRED ON ALL CLEANING OPERATIONS.
3. WHEN WITHIN THE INNER CITY LIMITS OR ON SHOULDERS THAT ARE TOO NARROW FOR THE FOLLOW VEHICLE, THE SECOND FOLLOW VEHICLE SHALL HAVE A TRUCK MOUNTED ATTENUATOR.
4. WHEN WORKING ON RAMP, THE SECOND FOLLOW VEHICLE SHALL REMAIN ON THE MAINLINE SHOULDER IN ADVANCE OF THE RAMP. THE FOLLOW VEHICLE SHALL HAVE A "RAMP WORK AHEAD" SIGN.
5. SIGN CLEANING SHALL HAVE THE SAME TRAFFIC CONTROL AND PROTECTION REQUIREMENTS AS OUTLINED FOR SWEEPING OPERATIONS.

ARTERIAL NOTES

1. DETAIL C SHALL APPLY
2. TRUCK MOUNTED ATTENUATORS ARE REQUIRED ON ALL CLEANING OPERATIONS.

REVISIONS	
NAME	DATE

ILLINOIS DEPARTMENT OF TRANSPORTATION

**DISTRICT ONE DETAILS:
TYPICAL APPLICATION OF
TRAFFIC CONTROL DEVICES
HIGHWAY AND SIGN CLEANING
OPERATIONS-DAY TIME ONLY**

SCALE: NONE
DATE 7/21/2005

DRAWN BY CAD
CHECKED BY

m127988aa.m32: 14:39:49 0/1/21/2005

NOTES:

PROTECTION VEHICLE NUMBER 2 SHALL BE PLACED IN ADVANCE OF HORIZONTAL OR VERTICAL CURVES TO PROVIDE ADVANCE WARNING FOR WORK OPERATIONS HIDDEN BY CURVES.

TMA MAY BE USED ON WORK VEHICLE.

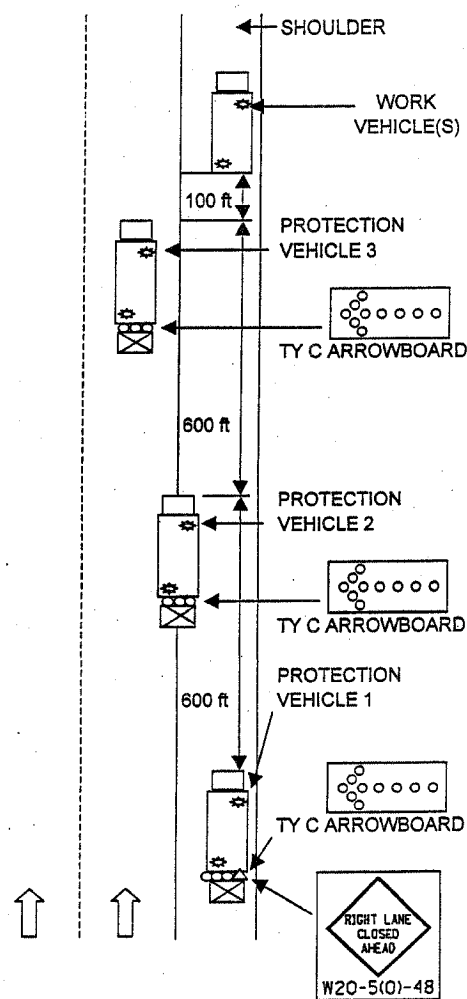
VEHICLES USED SHALL BE MADE HIGHLY VISIBLE WITH APPROPRIATE EQUIPMENT SUCH AS FLASHING LIGHTS, ROTATING BEACONS, FLAGS, SIGNS, OR ARROW DISPLAYS.

ALL PROTECTION VEHICLES SHALL HAVE ARROW DISPLAYS, AND TRUCK MOUNTED ATTENUATORS.

DETAIL MAY BE USED FOR WORK IN LEFT OR RIGHT LANE.

DURING SIGN CLEANING OPERATIONS WHEN WORKERS(VEHICLES) DO NOT ENCROACH INTO TRAVEL LANES, PROTECTION VEHICLES SHALL REMAIN ON THE SHOULDER.

- KEY:**
- △ SIGN- W20-5(0)-48
LEFT OR RIGHT LANE CLOSED AHEAD
 - ∞ ARROWBOARD (TYPE C)
 - ⊛ VEHICLE SAFETY LIGHT
 - ↑ DIRECTION OF TRAFFIC
 - ⊠ TRUCK MOUNTED ATTENUATOR (TMA)



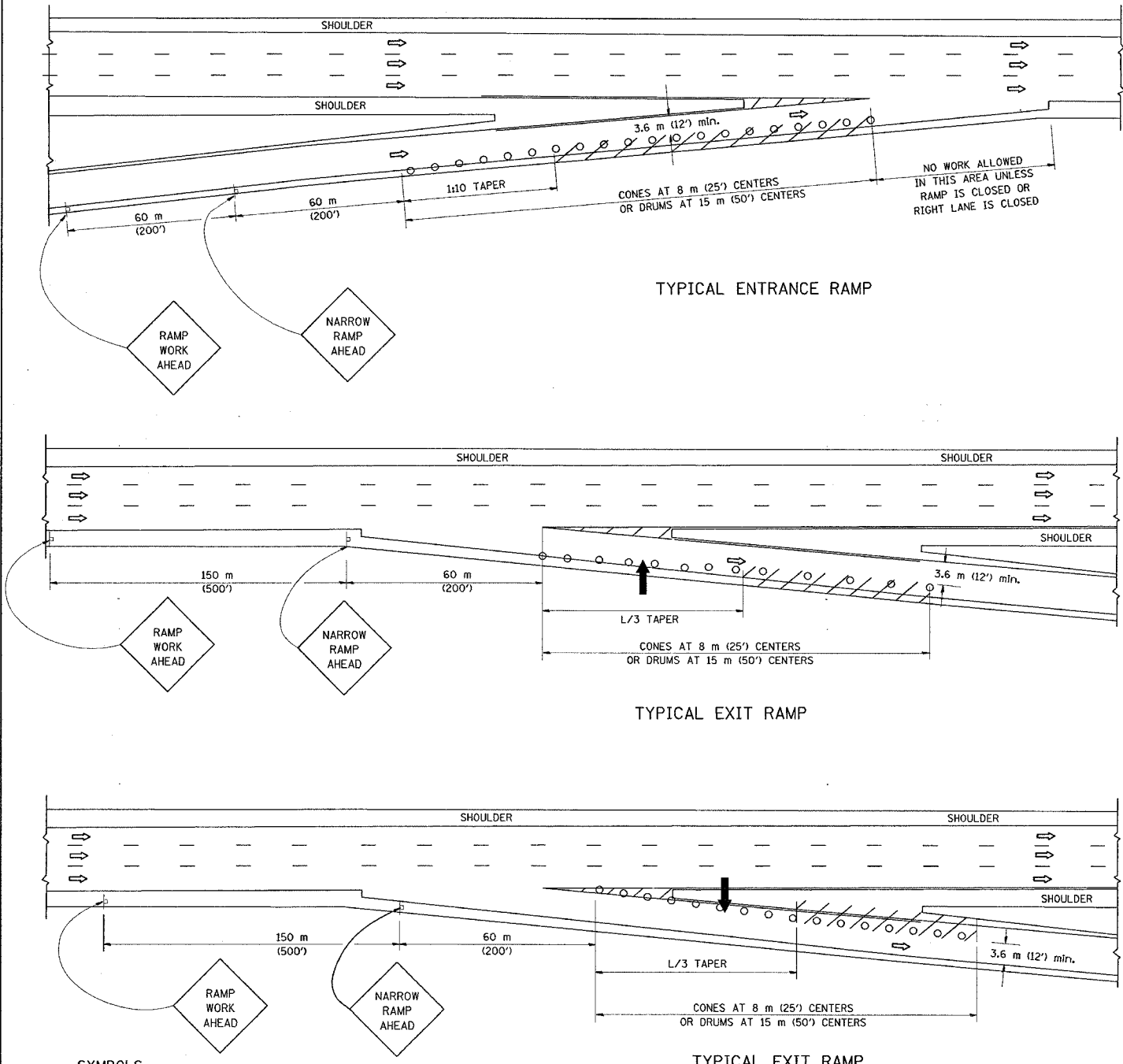
REVISIONS	
NAME	DATE

ILLINOIS DEPARTMENT OF TRANSPORTATION
DISTRICT ONE DETAILS:
 TYPICAL APPLICATION OF
 TRAFFIC CONTROL DEVICES
 HIGHWAY AND SIGN CLEANING
 OPERATIONS-NIGHT TIME ONLY

SCALE: VERT. _____
 HORIZ. _____

DATE _____ DRAWN BY _____
 DESIGNED BY _____
 CHECKED BY _____

PARTIAL RAMP CLOSURE DETAILS



SYMBOLS

- ARROWBOARD
- WORK AREA
- SIGN ON PORTABLE OR PERMANENT SUPPORT
- FLAGGER WITH CONTROL SIGN
- DRUM WITH MONO-DIRECTIONAL STEADY BURNING LIGHT
- CONES - 700 (28) IN HEIGHT

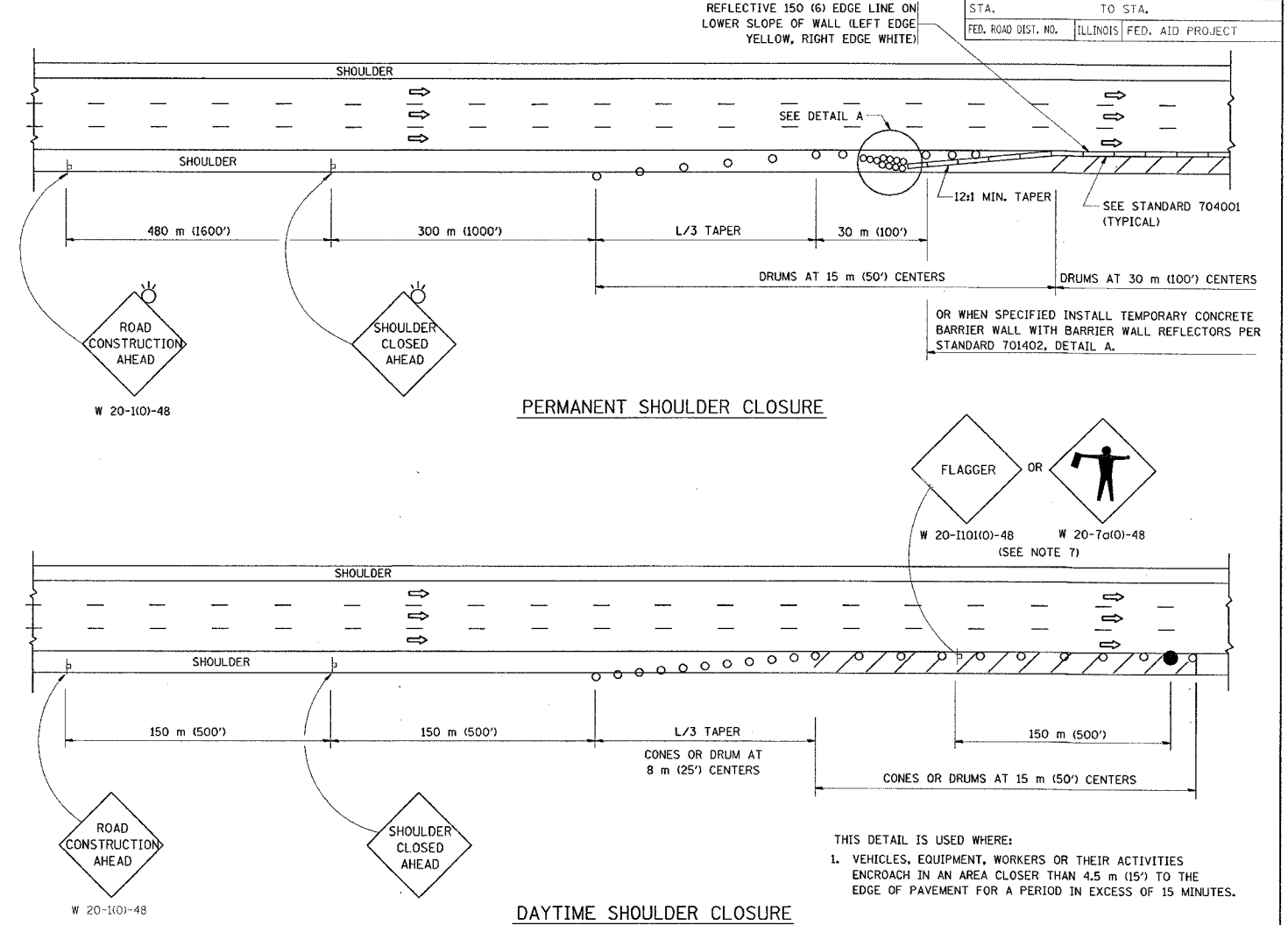
GENERAL NOTES

1. THE "L" DISTANCE EQUALS:

SPEED LIMIT	FORMULAS
80 km/h (45 mph) OR GREATER:	METRIC: $L=0.65(W)(S)$ ENGLISH: $L=(W)(S)$

W = WIDTH OF OFFSET IN METERS (FEET)
S = NORMAL POSTED SPEED KM/H (MPH)
2. PLASTIC DRUMS WITH HIGH PERFORMANCE REFLECTIVE SHEETING AND STEADY BURNING LIGHTS ARE REQUIRED FOR ALL NIGHTTIME CLOSURES.
3. ALL SIGNS SHALL BE POST MOUNTED IF THE CLOSURE TIME EXCEEDS FOUR DAYS.
4. FLASHING LIGHTS SHALL BE USED DURING THE HOURS OF DARKNESS AND SHALL BE INSTALLED ABOVE THE FIRST TWO SETS OF SIGNS.

SHOULDER CLOSURE DETAILS



F.A. RTE.	SECTION	COUNTY	TOTAL SHEETS	SHEET NO.
VAR	2004-090 I	VAR	21	21
STA.	TO STA.			
FED. ROAD DIST. NO.	ILLINOIS	FED. AID PROJECT		

PERMANENT SHOULDER CLOSURE

DAYTIME SHOULDER CLOSURE

THIS DETAIL IS USED WHERE:
 1. VEHICLES, EQUIPMENT, WORKERS OR THEIR ACTIVITIES ENCR OACH IN AN AREA CLOSER THAN 4.5 m (15') TO THE EDGE OF PAVEMENT FOR A PERIOD IN EXCESS OF 15 MINUTES.

ARRAY DESIGN PER MANUFACTURER TO BE NCHRP 350 COMPLIANT FOR POSTED SPEED.

IMPACT ATTENUATOR, TEMPORARY (SEE NOTE 5)

5. THE IMPACT ATTENUATOR, TEMPORARY IS NOT REQUIRED WHEN THE TEMPORARY CONCRETE BARRIER WALL IS OUTSIDE THE CLEAR ZONE OR IS TIED INTO THE EXISTING BARRIER. IF OFFSET IS LESS THAN 5 FEET USE "TRAFFIC BARRIER TERMINAL, TYPE III, TEMPORARY" PER NCHRP 350 FOR DETAILS.
6. AUTHORIZATION FROM THE DISTRICT'S BUREAU OF TRAFFIC CONTROL IS REQUIRED FOR ALL FREEWAY CLOSURES.
7. THE FLAGGER AND FLAGGER SIGN ARE REQUIRED AT THE ABOVE WORK SITES.
 - a. FOUR OR MORE WORK VEHICLES ENTER THE TRAFFIC LANES IN A ONE HOUR PERIOD.
 - b. THE WORK ACTIVITY REQUIRES FREQUENT ENCROACHMENT INTO THE LANE OPEN TO TRAFFIC.
 THE FLAGGER SHALL BE STATIONED APPROXIMATELY 30 m (100') TO 60 m (200') IN ADVANCE OF THE WORKERS.

REVISIONS	DATE
1. INITIAL	11/96
2. REVISED	12/02
3. NCHRP 350	04/03

ILLINOIS DEPARTMENT OF TRANSPORTATION

TRAFFIC CONTROL DETAILS FOR FREEWAY SHOULDER CLOSURES PARTIAL RAMP CLOSURES

SCALE: NONE
 DATE: 7/21/2005
 DRAWN BY: DWS
 CHECKED BY: TC-17