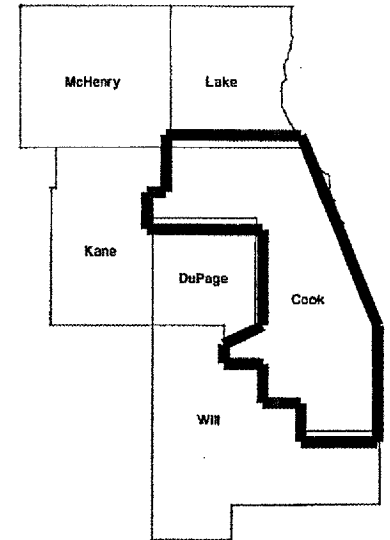


ROUTE	SECTION	COUNTY	TOTAL SHEETS	SHEET NUMBER
VARIOUS	2004-0891	COOK/DUPAGE	27	1

CONTRACT NO. 62833

STATE OF ILLINOIS
DEPARTMENT OF TRANSPORTATION
DIVISION OF HIGHWAYS
DISTRICT ONE
PROPOSED HIGHWAY PLANS

ROUTE: VARIOUS ROUTES IN DISTRICT ONE
SECTION: 2004-0891
BRIDGE SECURITY FENCE
COOK/DUPAGE COUNTY
C-91-357-04



LOCATION OF IMPROVEMENT INDICATED THUS: 

FOR INDEX OF SHEETS SEE SHEET NO. 2

STATE OF ILLINOIS
DEPARTMENT OF TRANSPORTATION
DIVISION OF HIGHWAYS

SUBMITTED: August 4, 2005
Diane O'Keefe
DEPUTY DIRECTOR OF HIGHWAYS / REGIONAL ENGINEER

August 19, 2005
Mike Skene
ENGINEER OF DESIGN AND ENVIRONMENT

August 19, 2005
Victor Madary
DIRECTOR, DIVISION OF HIGHWAYS

**PRINTED BY THE AUTHORITY
OF THE STATE OF ILLINOIS**

J.U.L.I.E.: JOINT UTILITY LOCATION
INFORMATION FOR EXCAVATION
(800) 892-0123

CONTRACT NO. 62833

REGION ONE - BUREAU OF DESIGN
PALM PREPARATION ENGINEER: K. ENG / R. BORO (847) 705-4178

ROUTE	SECTION	COUNTY	TOTAL SHEETS	SHEET NUMBER
VARIOUS	2004-089I	COOK/DUPAGE	27	2

CONTRACT NO. 62833

GENERAL NOTES

1. OUTSIDE THE CITY OF CHICAGO, BEFORE STARTING ANY EXCAVATION, THE CONTRACTOR SHALL CALL "J.U.L.I.E." (JOINT UTILITY LOCATION INFORMATION FOR EXCAVATION) AT (800) 892-0123 FOR FIELD LOCATIONS OF BURIED ELECTRIC, TELEPHONE AND GAS UTILITIES. (48 HOUR NOTIFICATION IS REQUIRED). IN THE CITY OF CHICAGO, BEFORE STARTING ANY EXCAVATION, THE CONTRACTOR SHALL CALL "C.U.A.N." (CHICAGO UTILITY ALERT NETWORK) AT (312) 774-7000 FOR FIELD LOCATIONS OF BURIED ELECTRIC, TELEPHONE AND GAS UTILITIES. (48 HOUR NOTIFICATION IS REQUIRED).
2. THE CONTRACTOR SHALL COORDINATE CONSTRUCTION ACTIVITIES WITH UTILITY COMPANIES AND THE CITY OF CHICAGO..
3. THE CONTRACTOR WILL NOT BE ALLOWED TO SET UP A YARD OR FIELD OFFICE ON STATE PROPERTY WITHOUT WRITTEN PERMISSION FROM THE DEPARTMENT.
4. WHEN ARTIFICIAL LIGHTING IS UTILIZED IN NIGHT OPERATIONS, THE CONTRACTOR SHALL EXERCISE THE UTMOST PRECAUTIONS IN PREVENTING ADVERSE VISIBILITY TO THE MOTORING PUBLIC AND ADJOINING RESIDENTIAL AREAS.
5. IT SHALL BE THE CONTRACTOR'S RESPONSIBILITY TO VERIFY ALL DIMENSIONS AND CONDITIONS EXISTING IN THE FIELD PRIOR TO CONSTRUCTION AND ORDERING OF MATERIALS. ALL DIMENSIONS AND GATE LOCATION AS SHOWN ON THE PLAN SHEETS MAY NEED TO BE ALERTED IN ORDER TO MEET EXISTING FIELD CONDITIONS AND THE CLEARANCES SPECIFIED IN THE PLANS.
6. THE CONTRACTOR SHALL CONTACT THE DISTRICT ONE TRAFFIC CONTROL SUPERVISOR AT (847) 705-4470 A MINIMUM OF 72 HOURS IN ADVANCE OF BEGINNING WORK.
7. CONDUIT AND LIGHTING FACILITIES IN AND AROUND THE VICINITY OF THE REPAIR LOCATIONS OF THE BRIDGE SUBSTRUCTURE.
8. DO NOT SCALE PLANS FOR CONSTRUCTION DIMENSIONS.
9. THESE PLANS HAVE BEEN PREPARED FROM NOTES RECEIVED FROM FIELD BRIDGE MAINTENANCE ENGINEERS.
10. DIRECTION INDICATOR BARRICADES SHALL BE USED IN LANE CLOSURE TAPERS.

INDEX OF SHEETS

- 1 COVER SHEET
- 2 GENERAL NOTES, INDEX OF SHEETS AND STATE STANDARDS
- 3 SUMMARY OF QUANTITIES
- 4 TYPICAL DRAWINGS
- 5 - 24 LOCATION MAPS AND PLAN SHEETS
- 25 DETAIL - SIGN LAYOUT
- 26 DETAIL - ANCHOR PLATE DETAILS
- 27 TRAFFIC CONTROL DETAILS FOR FREEWAY SHOULDERS CLOSURES AND PARTIAL RAMP CLOSURES

STATE STANDARDS

- 664001-01
- 701101-01
- 701400-02
- 701401-03
- 701606-04
- 702001-05

ILLINOIS DEPARTMENT OF TRANSPORTATION
**GENERAL NOTES,
INDEX OF SHEETS AND
STATE STANDARDS**

ROUTE	SECTION	COUNTY	TOTAL SHEETS	SHEET NUMBER
VARIOUS	2004-0891	COOK/DUPAGE	27	3

CONTRACT 62833

SUMMARY OF QUANTITIES

CODE NUMBER	DESCRIPTION	UNIT	Y102 URBAN 100% STATE		
			TOTAL	COOK COUNTY	DUPAGE COUNTY
66400305	CHAIN LINK FENCE, 6'	FOOT	924	924	0
66400505	CHAIN LINK FENCE, 8'	FOOT	6362	5702	660
66402900	CHAIN LINK GATES, 6' X 6' SINGLE	EACH	4	4	0
66404900	CHAIN LINK GATES, 8' X 6' SINGLE	EACH	52	48	4
67100100	MOBILIZATION	L SUM	1	.8	.2
70102625	TRAFFIC CONTROL AND PROTECTION, STANDARD 701606	L SUM	1	.8	.2
X0323599	LOCKS FOR GATES	EACH	88	82	6
X7011015	TRAFFIC CONTROL AND PROTECTION (EXPRESSWAYS)	L SUM	1	.8	.2
X0324740	FURNISHING AND INSTALLING SIGNS	EACH	52	48	4

ILLINOIS DEPARTMENT OF TRANSPORTATION
SUMMARY OF QUANTITIES

ROUTE	SECTION	COUNTY	TOTAL SHEETS	SHEET NUMBER
VARIOUS	2004-089 I	COOK	27	4

CONTRACT 62833

NOTES:

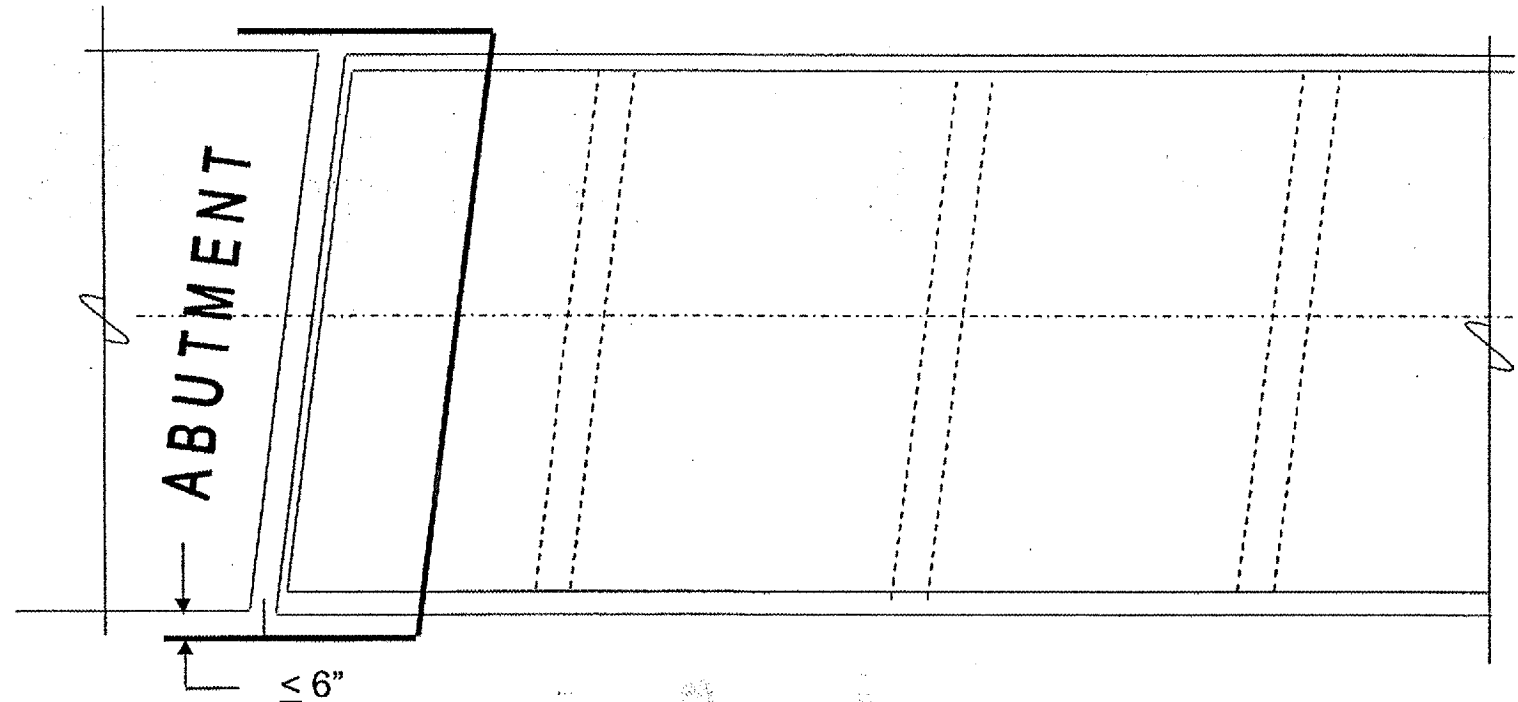
ALL FENCE SHALL BE 8' UNLESS OTHERWISE NOTED ON PLANS.

A 12" CLEARANCE BETWEEN THE TOP OF THE FENCE AND THE BOTTOM OF THE BRIDGE DECK FLOOR/BEAM, SHALL BE MAINTAINED FOR THE PURPOSE OF FUTURE BRIDGE MAINTENANCE.

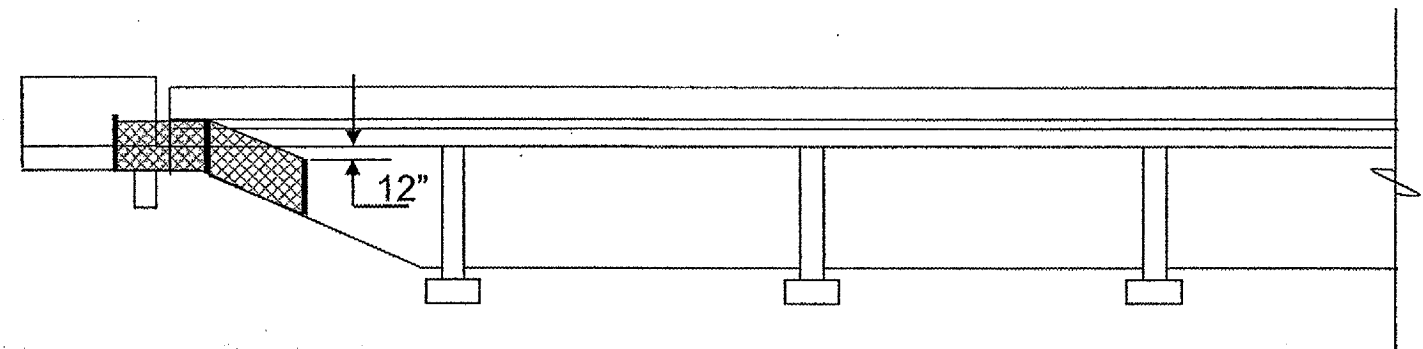
A 4" CLEARANCE BETWEEN THE BOTTOM OF THE FENCE AND THE SLOPE WALL SHALL BE MAINTAINED FOR THE PURPOSE OF FUTURE CLEANING AND FLUSHING OF THE ENCLOSED AREA.

THE END POST SHALL BE WITHIN 6" OR LESS FROM THE ABUTMENT.

THE INTENT OF THIS CONTRACT IS TO DENY ACCESS OF ANY UNAUTHORIZED PERSONNEL UNDER THE BRIDGE. ACTUAL FENCE INSTALLATIONS MUST BE APPROVED BY THE ENGINEER.



TYPICAL PLAN VIEW



TYPICAL ELEVATION VIEW

ILLINOIS DEPARTMENT OF TRANSPORTATION

TYPICAL DRAWINGS

ROUTE	SECTION	COUNTY	TOTAL SHEETS	SHEET NUMBER
VARIOUS	2004-089I	COOK	27	5

62833

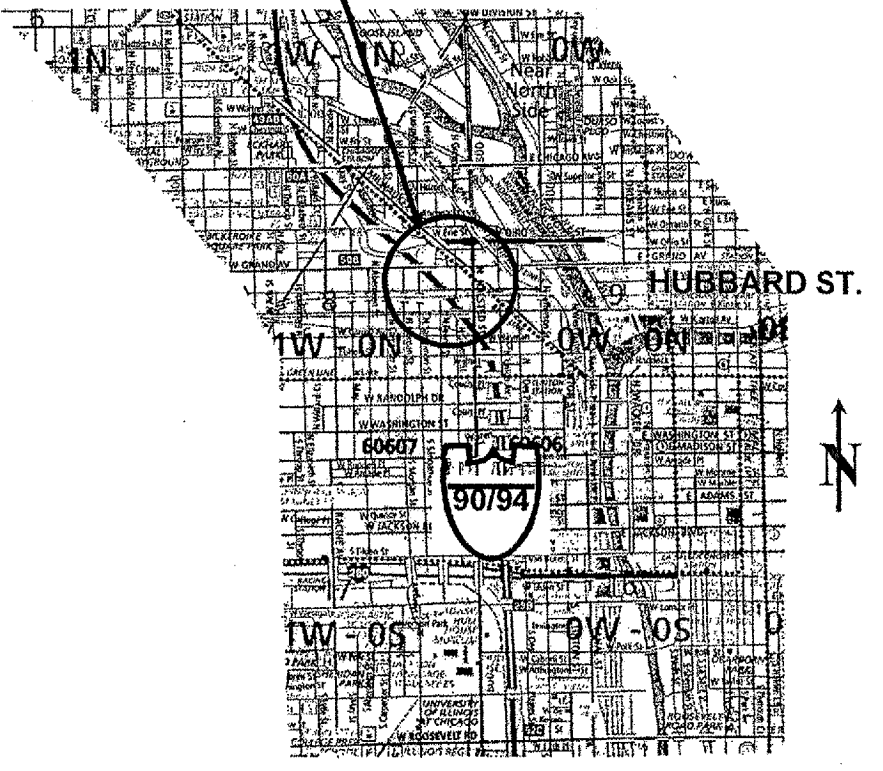
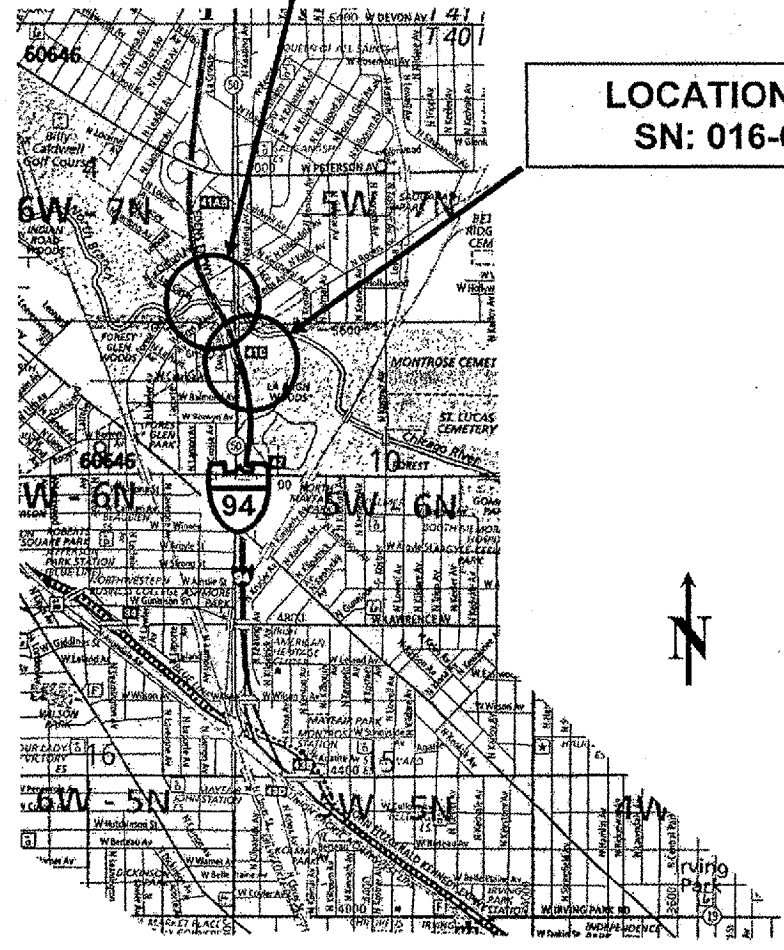
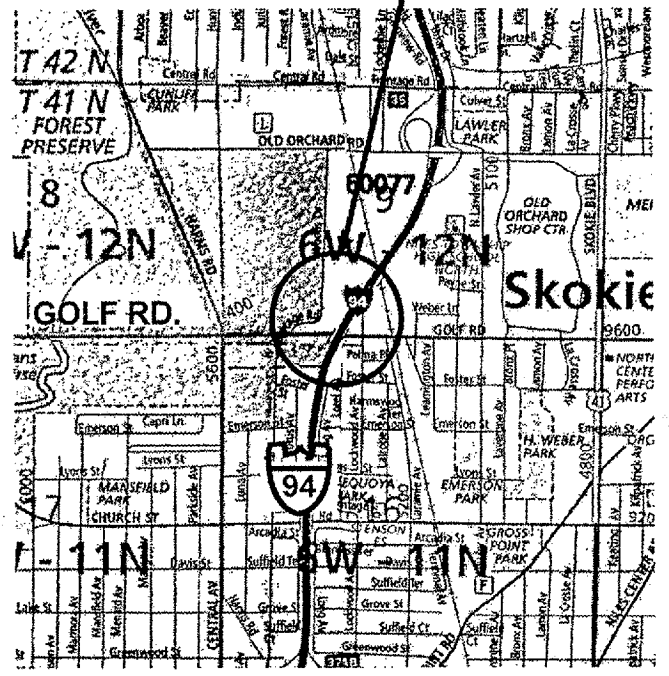
IMPROVEMENTS
ARE LOCATED IN
THE CITY OF
CHICAGO AND
VILLAGE OF SKOKIE

LOCATION NO 1
SN: 016-0105

LOCATION NO 2
SN: 016-0107

LOCATION NO 3
SN: 016-0108

LOCATION NO 4
SN: 016-2050



TRAFFIC DATA
2002 ADT = 166,400
POSTED SPEED LIMIT = 55 MPH

TRAFFIC DATA
2002 ADT = 165,000
POSTED SPEED LIMIT = 55 MPH

TRAFFIC DATA
2002 ADT = 279,400
POSTED SPEED LIMIT = 55 MPH

LOCATION 1
EDENS EXPRESSWAY AND

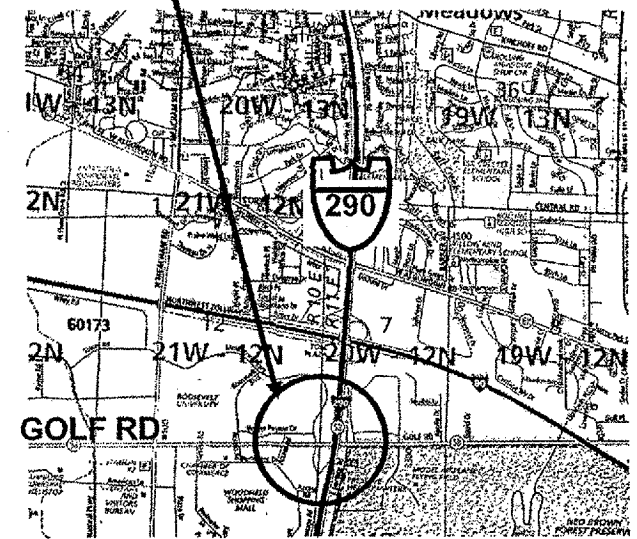
LOCATIONS 2-4
KENNEDY EXPRESSWAY
LOCATION MAP

ROUTE	SECTION	COUNTY	TOTAL SHEETS	SHEET NUMBER
VARIOUS	2004-089I	COOK	27	6

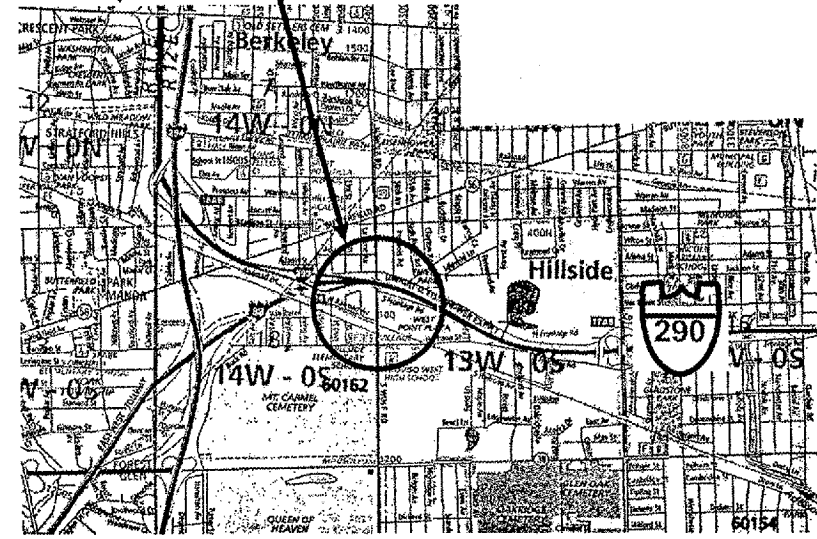
62833

**IMPROVEMENTS
ARE LOCATED IN
VILLAGES OF
SCHAUMBURG,
HILLSIDE AND
MAYWOOD**

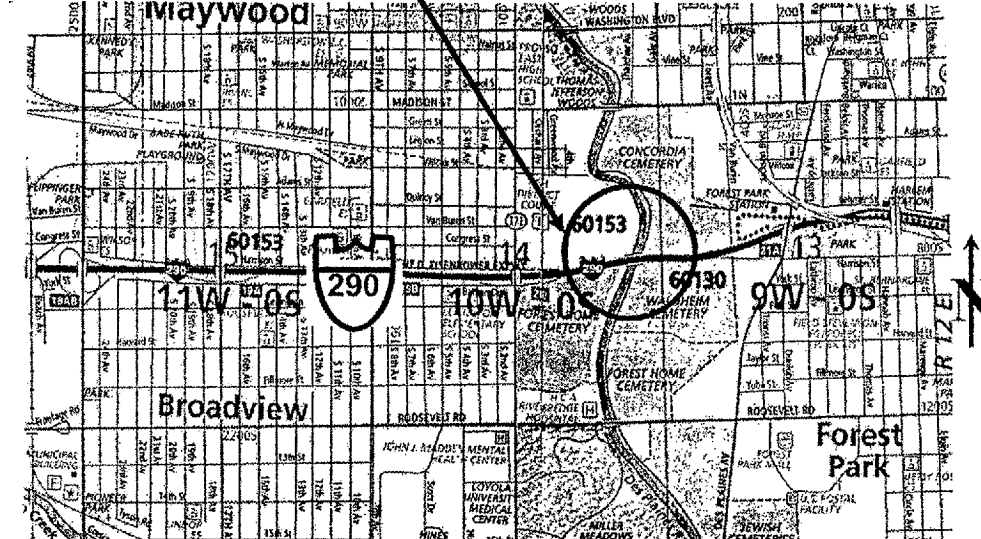
**LOCATION NO 5
SN: 016-0980**



**LOCATION NO 6
SN: 016-0086**



**LOCATION NO 7
SN: 016-0090**



TRAFFIC DATA
2002 ADT = 195,100
POSTED SPEED LIMIT = 55 MPH

TRAFFIC DATA
2002 ADT = 186,800
POSTED SPEED LIMIT = 55 MPH

TRAFFIC DATA
2002 ADT = 201,600
POSTED SPEED LIMIT = 55 MPH

**LOCATION 5
I-290 EXTENSION**

**LOCATIONS 6 & 7
EISENHOWER EXPRESSWAY
LOCATION MAP**

ROUTE	SECTION	COUNTY	TOTAL SHEETS	SHEET NUMBER
VARIOUS	2004-0891	COOK	27	7

62833

IMPROVEMENTS ARE LOCATED IN VILLAGES OF DOLTON, SOUTH HOLLAND AND CITY OF CALUMET CITY

LOCATION NO 8
SN: 016-0160

LOCATION NO 9
SN: 016-0157



LOCATION NO 10
SN: 016-0161

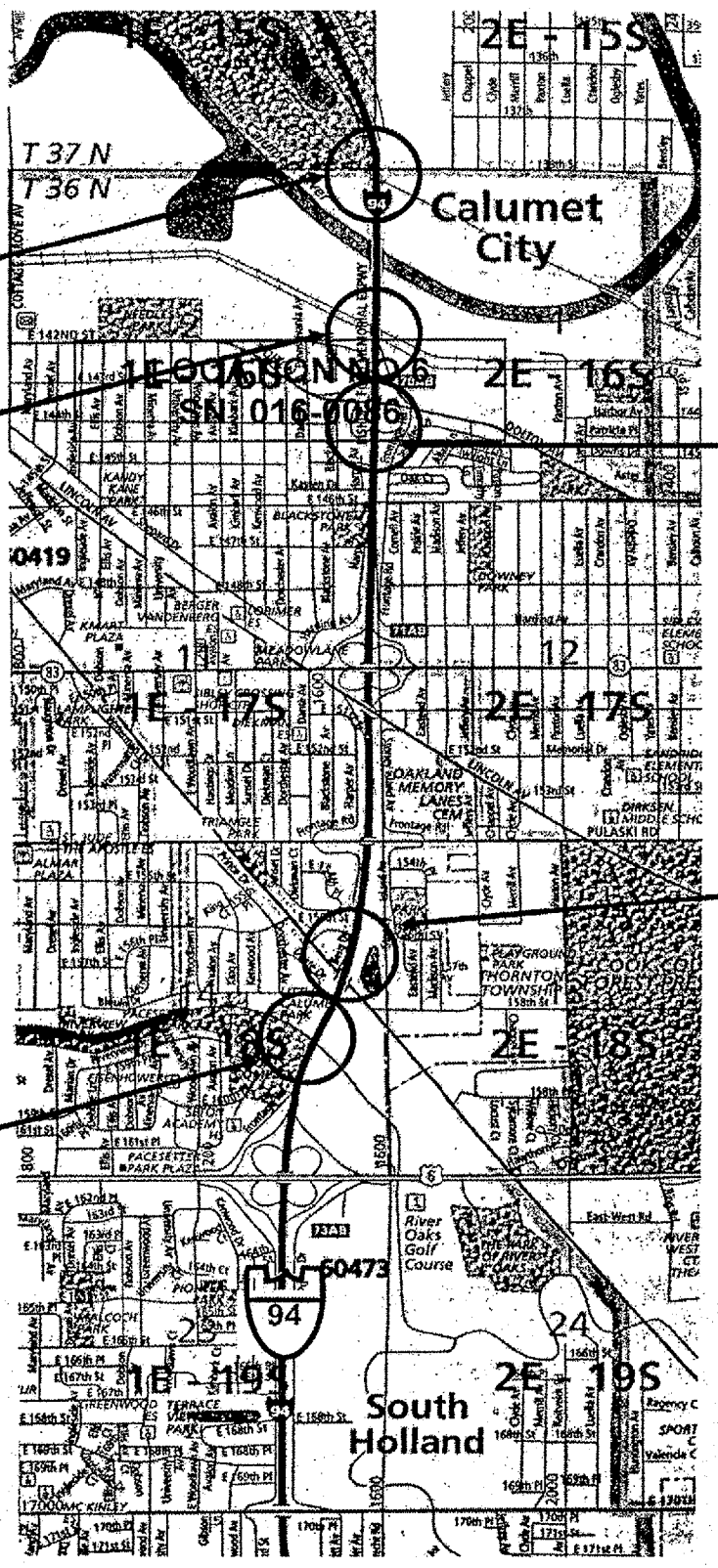
LOCATION NO 11
SN: 016-0162

TRAFFIC DATA FOR LOCATIONS 8 & 9
2002 ADT = 131,300
POSTED SPEED LIMIT = 55 MPH

LOCATION NO 12
SN: 016-0163

TRAFFIC DATA FOR LOCATIONS 10 TO 12
2002 ADT = 124,800
POSTED SPEED LIMIT = 55 MPH

LOCATIONS 8 TO 12
BISHOP FORD EXPERSSSWAY
LOCATION MAP



ROUTE	SECTION	COUNTY	TOTAL SHEETS	SHEET NUMBER
VARIOUS	2004-0891	DUPAGE	27	8

62833

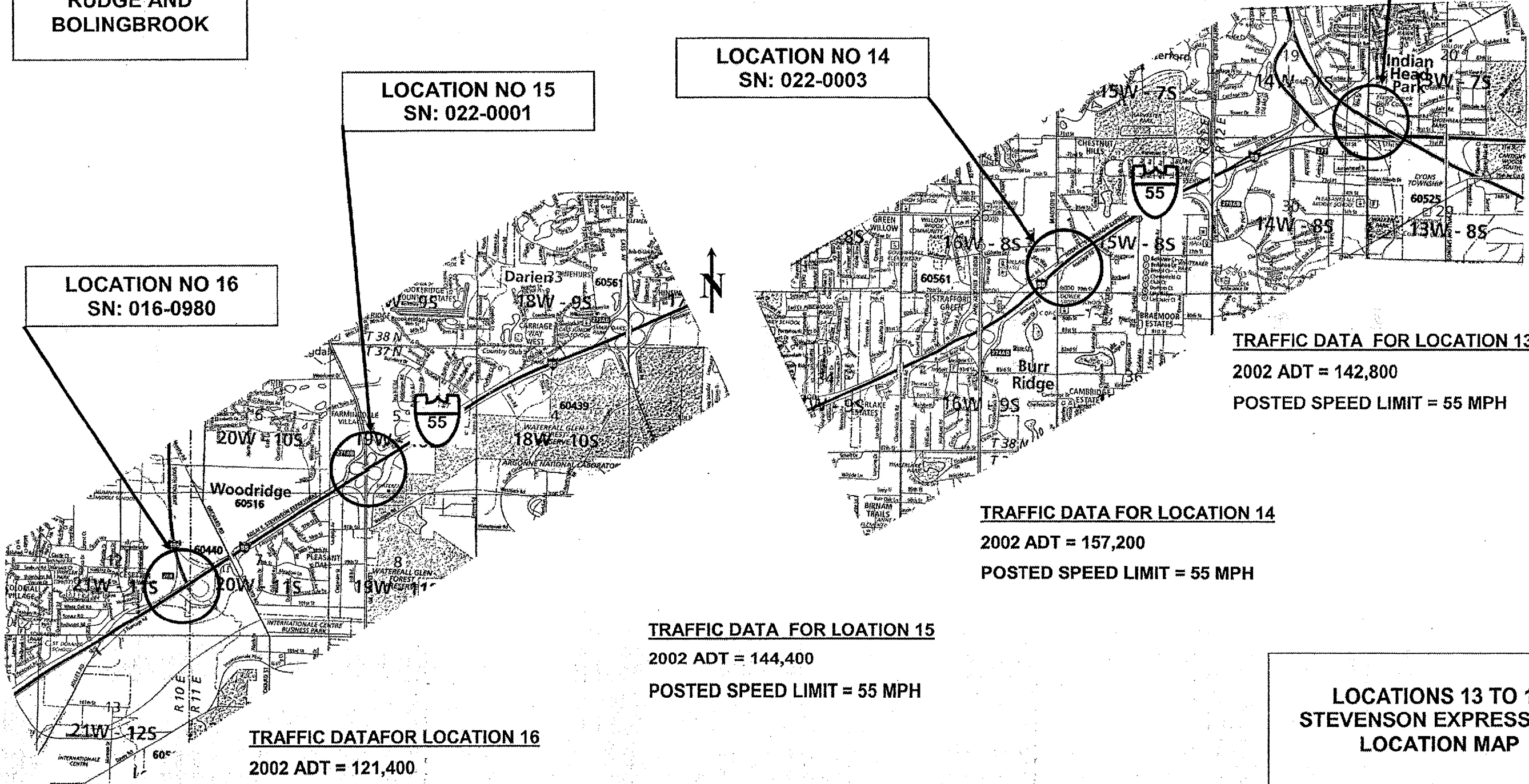
IMPROVEMENTS ARE LOCATED IN VILLAGES OF DARIEN, BURR RIDGE AND BOLINGBROOK

LOCATION NO 13
SN: 016-0003

LOCATION NO 14
SN: 022-0003

LOCATION NO 15
SN: 022-0001

LOCATION NO 16
SN: 016-0980



TRAFFIC DATA FOR LOCATION 13
2002 ADT = 142,800
POSTED SPEED LIMIT = 55 MPH

TRAFFIC DATA FOR LOCATION 14
2002 ADT = 157,200
POSTED SPEED LIMIT = 55 MPH

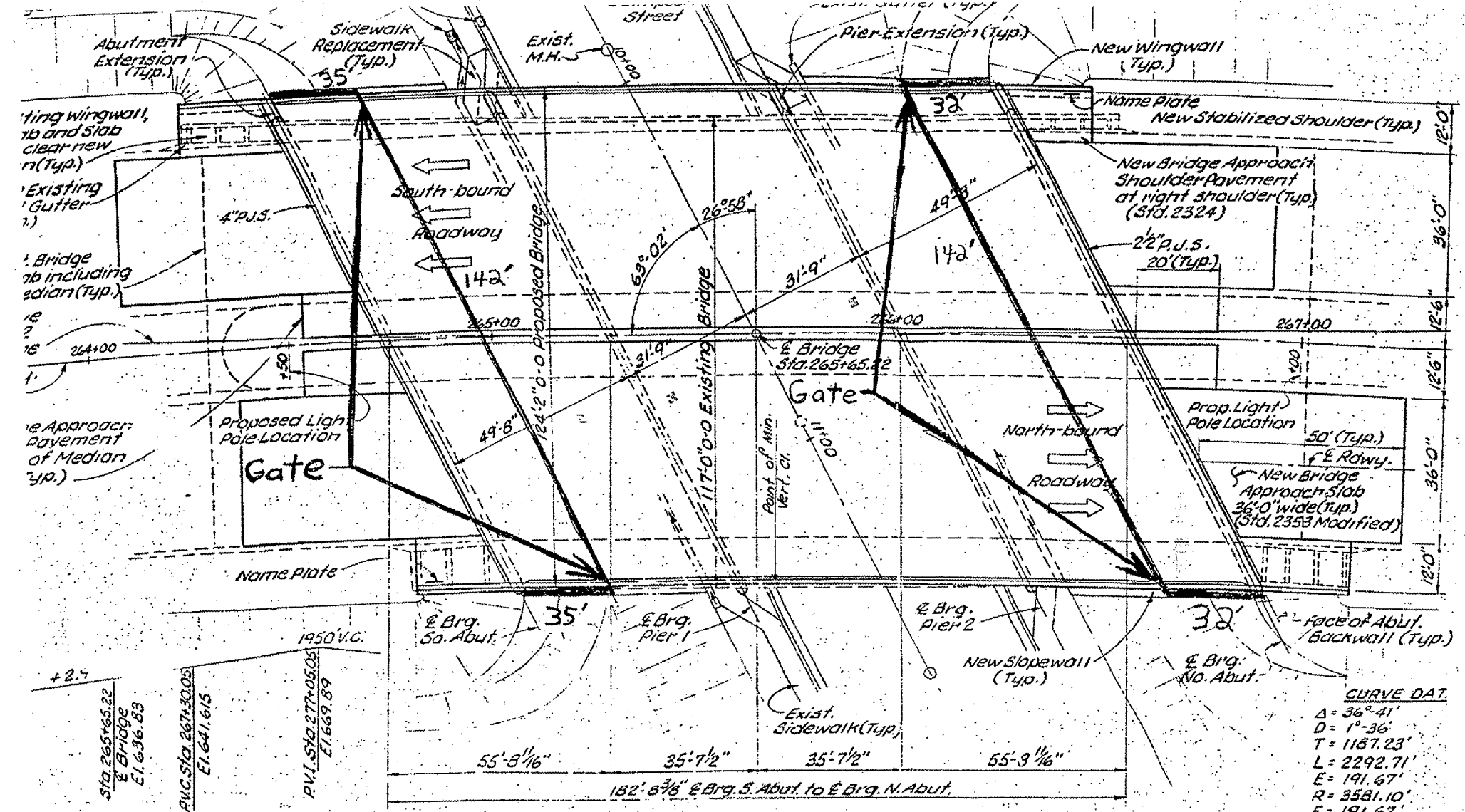
TRAFFIC DATA FOR LOCATION 15
2002 ADT = 144,400
POSTED SPEED LIMIT = 55 MPH

TRAFFIC DATA FOR LOCATION 16
2002 ADT = 121,400
POSTED SPEED LIMIT = 55 MPH

LOCATIONS 13 TO 16
STEVENSON EXPRESSWAY
LOCATION MAP

ROUTE	SECTION	COUNTY	TOTAL SHEETS	SHEET NUMBER
Various	2004-089I	COOK	27	9

CONTRACT 62833



CURVE DATA
 $\Delta = 36^\circ 41'$
 $D = 1^\circ 36'$
 $T = 1187.23'$
 $L = 2292.71'$
 $E = 191.67'$
 $R = 3581.10'$
 $E = 191.67'$
 $Super = 0.038/ft.$
 $P.I. Sta. 260+96.20 N$

LOCATION NO. 1

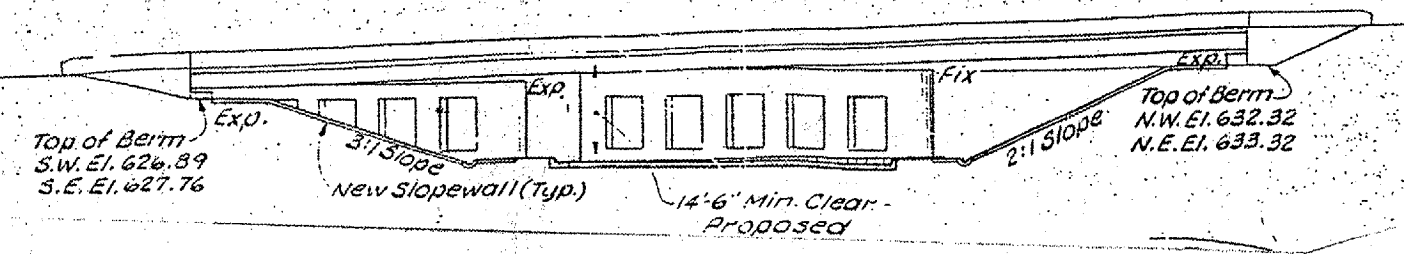
PLAN

This is an alteration plan. For details of existing bridge, see original plans by Cook Co. Highway Dept.

PROFILE EDENS EXPRESSWAY
 Along Median edges of Roadway

0.00%	350' V.C.	+3.50%
P.V.I. Sta. 9+70.00 Ei. 616.60	P.V.C. Sta. 10+15.00 Ei. 616.60	P.V.I. Sta. 12+50.00 Ei. 616.60
Sta. 265+65.22 Ei. 636.83	Sta. 267+40.05 Ei. 641.615	Sta. 277+05.03 Ei. 669.89

PROFILE & SIMPSON STREET

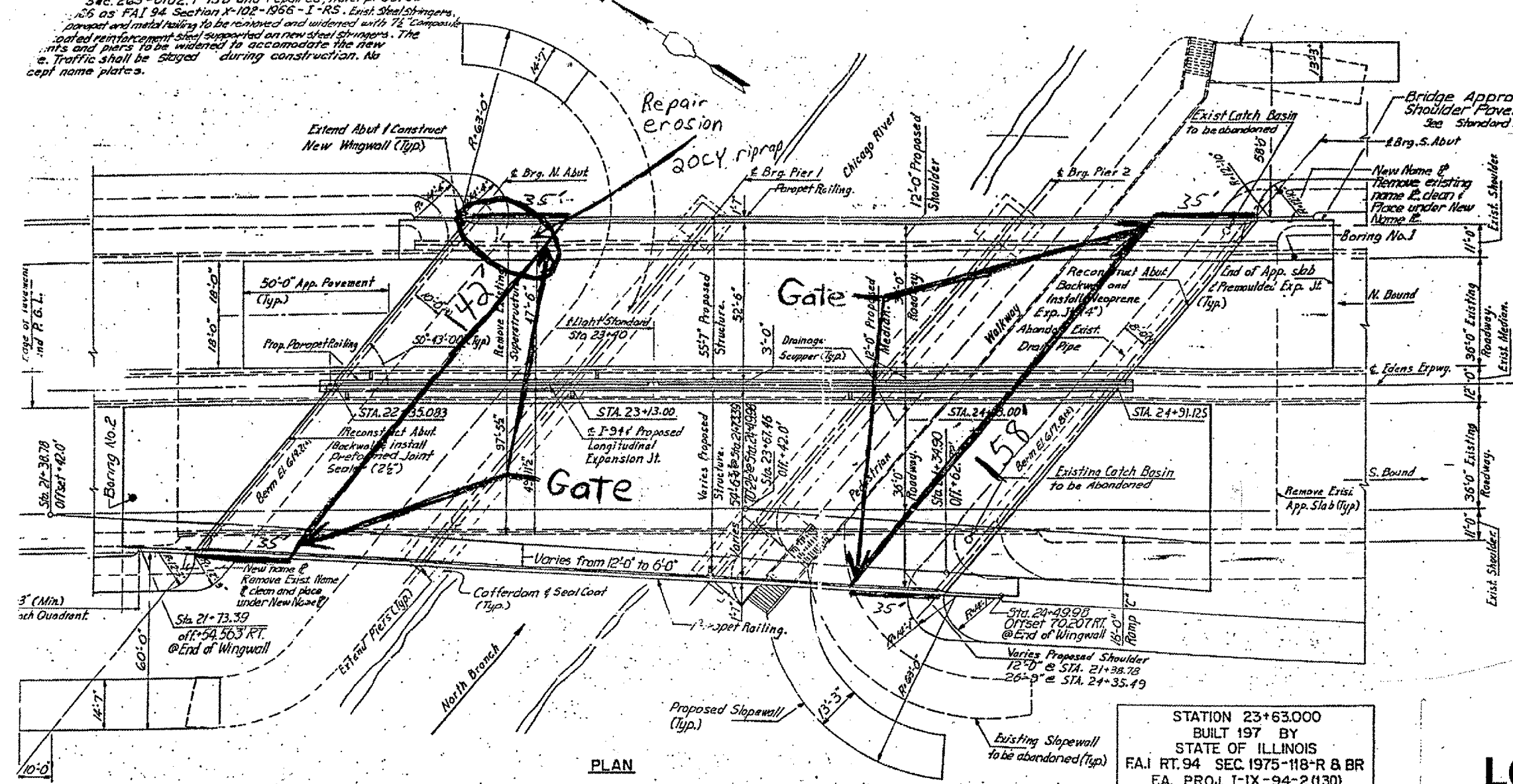


016-0105
 I94 (Edens)/Golf Rd
 410 LF of 8' fence
 4 Ea gate

ROUTE	SECTION	COUNTY	TOTAL SHEETS	SHEET NUMBER
Various	2004-089I	COOK	27	10

CONTRACT 62833

Sec. 263-0102, I-15D and repaired, waterproofed
 as FAI 94 Section X-102-1966-I-RS. Exist. Steel stringers,
 parapet and metal railing to be removed and widened with 7/8" composite
 coated reinforcement steel supported on new steel stringers. The
 piers and abutments to be widened to accommodate the new
 structure. Traffic shall be staged during construction. No
 except name plates.

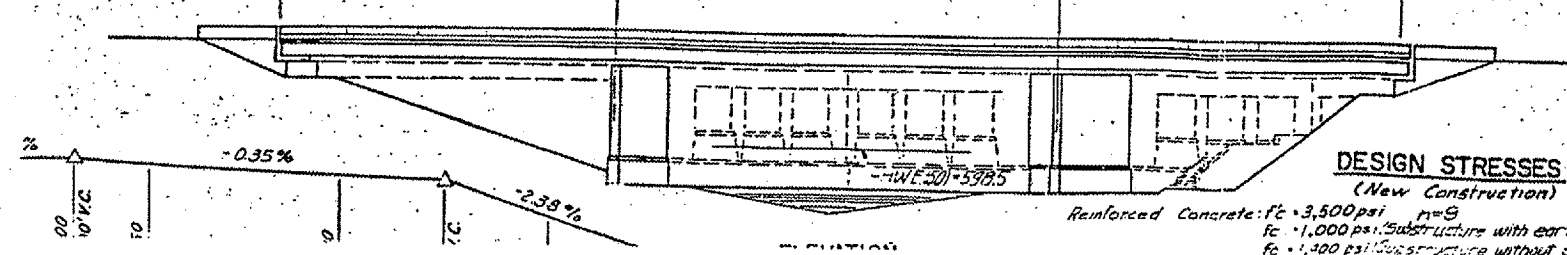


PLAN

LOCATION NO. 2

STATION 23+63.00
 BUILT 197 BY
 STATE OF ILLINOIS
 F.A.I. RT. 94 SEC. 1975-118-R & BR
 F.A. PROJ. I-IX-94-2(130)
 LOADING HS 20 & ALT.
 STR. NO. 016-0107

Station	Elevation	Description	Station	Elevation	Description	Station	Elevation	Description	Station	Elevation	Description
Sta. 22+39.991	El. 625.781	North Bound P.G.L.	Sta. 23+17.908	El. 625.695	Exp.	Sta. 24+17.908	El. 625.160	Exp.	Sta. 24+96.033	El. 625.194	Exp.
Sta. 22+30.175	El. 625.786	South Bound P.G.L.	Sta. 23+08.092	El. 625.711	Exp.	Sta. 24+08.092	El. 625.489	Exp.	Sta. 24+86.217	El. 625.228	Exp.

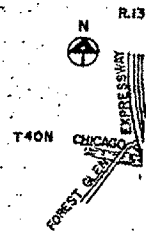


DESIGN STRESSES

(New Construction)
 Reinforced Concrete: $f_c = 3,500$ psi $m=9$
 $f_s = 1,000$ psi (Substructure with earth pressure)
 $f_s = 1,300$ psi (Substructure without earth pressure)

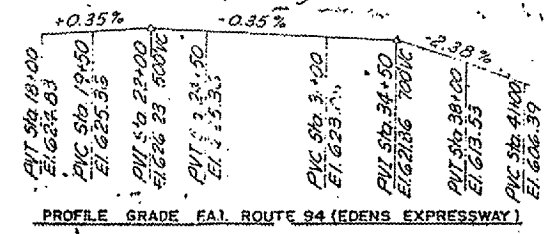
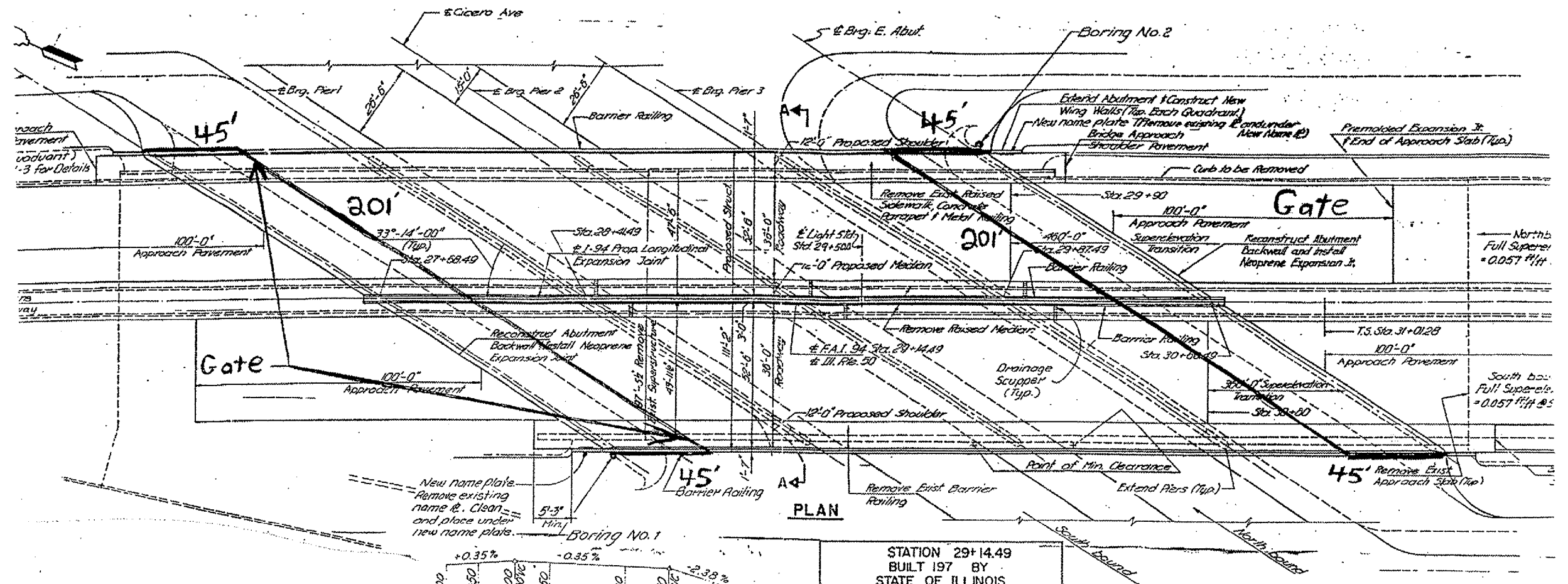
NAME PLATE
 (For Details of Name Plate
 to Standard 21)

016-0107
 I 94 (Edens) / N. Branch Chicago River
 440' LF of 8' fence
 4 Eo gates
 20CY Riprap



ROUTE	SECTION	COUNTY	TOTAL SHEETS	SHEET NUMBER
Various	2004-089I	COOK	27	11

CONTRACT 62833

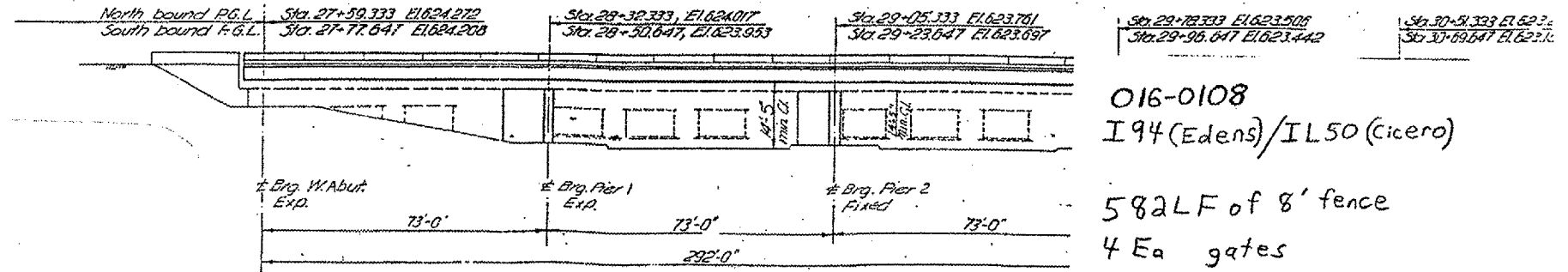


STATION 29+14.49
 BUILT 197 BY
 STATE OF ILLINOIS
 F.A.I. RT. 94 SEC. 1975-118-R & BR
 F.A. PROJ. I-IX-94-2 (130)
 LOADING HS 20 & ALT.
 STR. NO. 016-0108

NAME PLATE
 (For Details of name plate refer to Standard 2113)

Note: Cost of removing, clearing & replacing existing name plate shall be incidental.

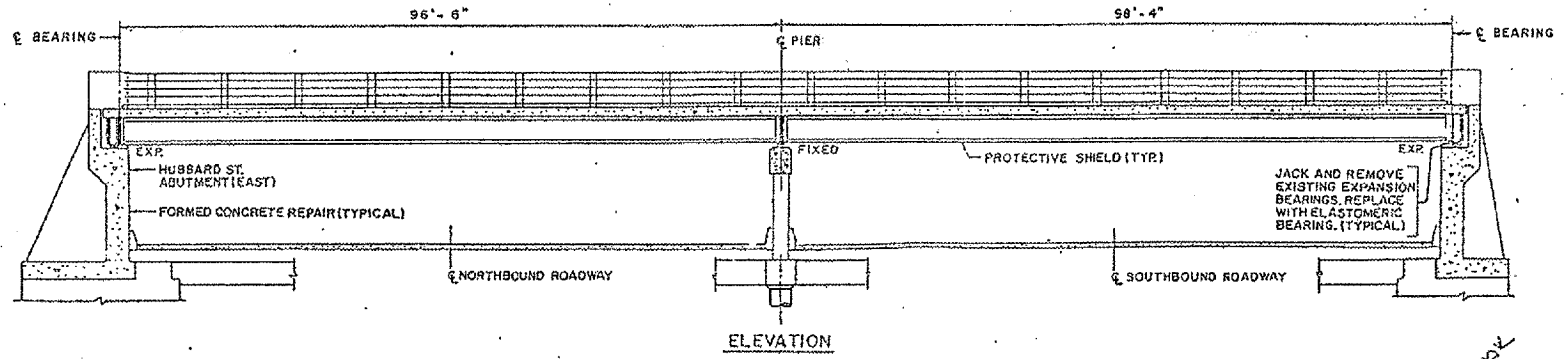
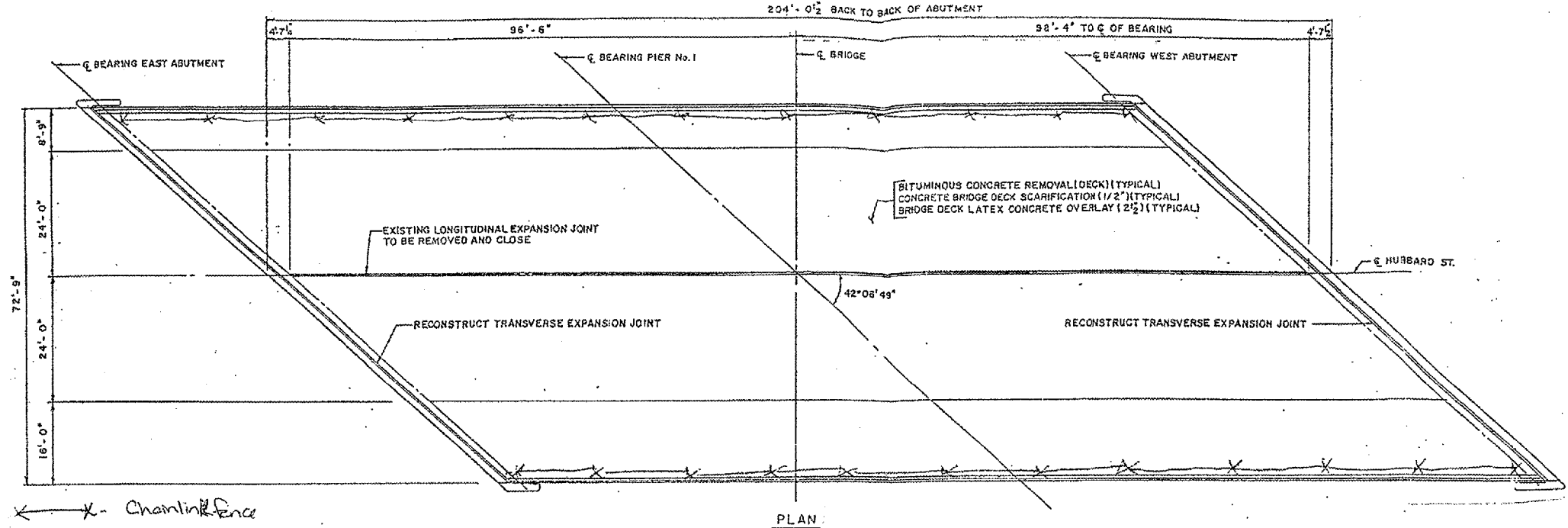
LOCATION NO. 3



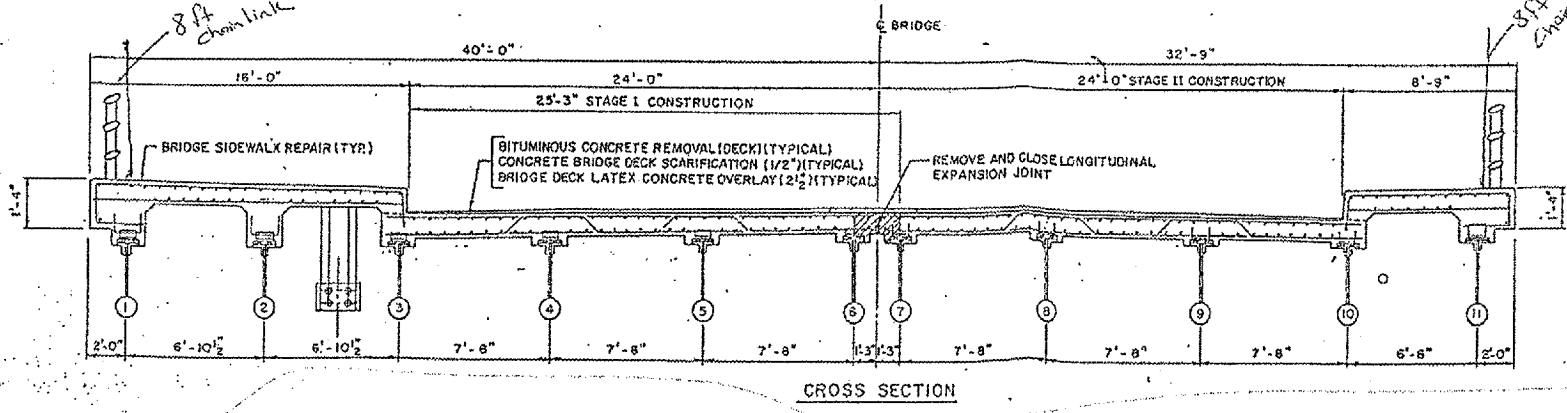
016-0108
 I 94 (Edens) / IL 50 (Cicero)
 582 LF of 8' fence
 4 Ea gates

ROUTE	SECTION	COUNTY	TOTAL SHEETS	SHEET NUMBER
Various	2004-0891	COOK	27	12

CONTRACT 62833



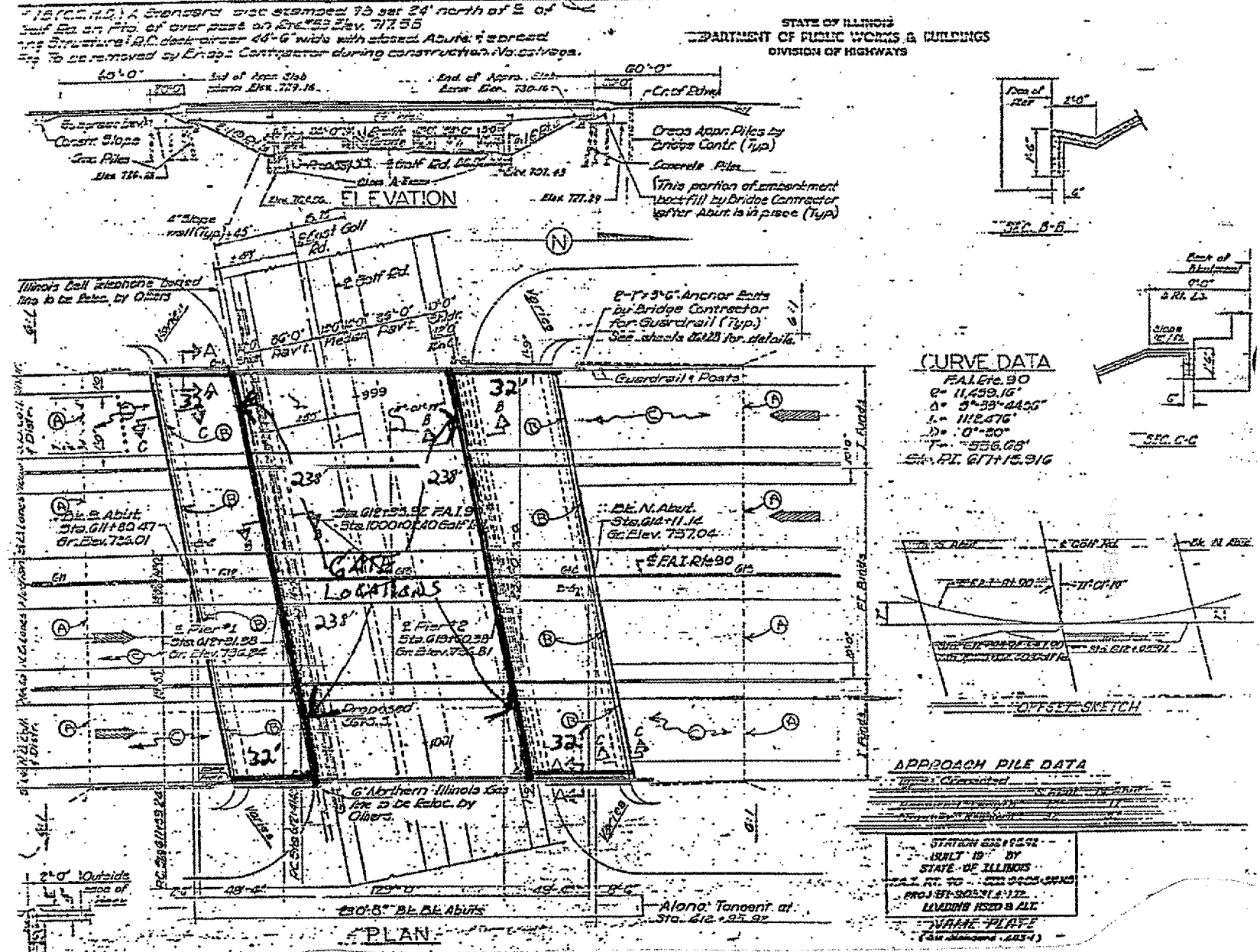
LOCATION NO. 4



ILLINOIS DEPARTMENT OF TRANSPORTATION
HUBBARD STREET OVER
INTERSTATE ROUTE 90/94
S.N. 016-2050
PLAN, ELEVATION, AND TYPICAL
SECTION
SCALE: VERT. HORIZ.
DATE DRAWN BY MVT

ROUTE	SECTION	COUNTY	TOTAL SHEETS	SHEET NUMBER
Various	2004-089I	COOK	27	13

CONTRACT 62833



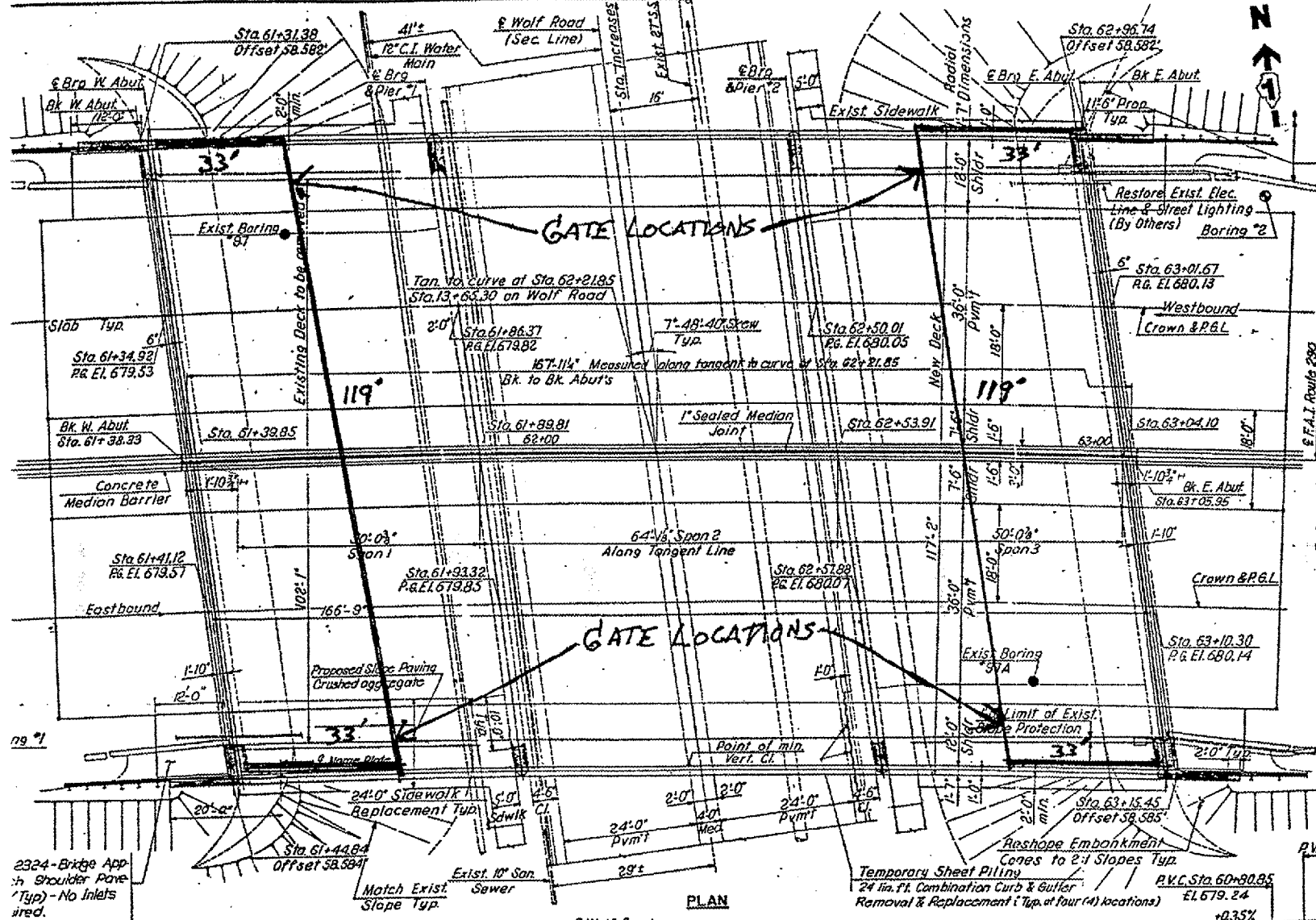
LOCATION NO. 5

OIG-0980 I-290 OVER GOLF ROAD
 M. PALELLO 6/10/04

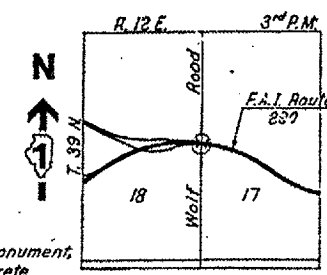
FENCE 604 LF. 8' FENCE
 GATES 4 EA.

ROUTE Various	SECTION 2004-089I	COUNTY COOK	TOTAL SHEETS 27	SHEET NUMBER 14
------------------	----------------------	----------------	--------------------	--------------------

CONTRACT 62833



Curve Data:
 F.A.I. Route 290
 A = 87°
 D = 1°-30'00"
 T = 3624.78'
 L = 5800'
 R = 3819.72'
 No super elevation



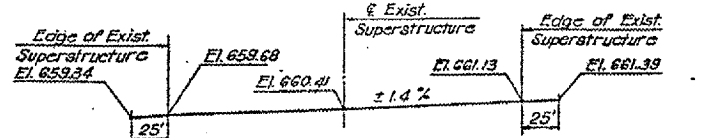
Existing ducts to remain in service
 Damaged ducts shall be restored by
 the contractor at no extra payment.

BENCH MARK:
 A standard C.C.H.D. Brass Monument,
 stamped 'K-71', atop the Concrete
 Grade Beam of East Pier between
 Columns 3 and 4 (From the South)
 of Eisenhower Exwy. El. 663.365

- MAJOR WORK ITEMS**
1. Drive Piling
 2. Widen Substructures
 3. Treat new Steel Beams
 4. Widen Slope Paving
 5. Repair Substructures

- NOTES**
- DESIGN LOADING**
 HS20-44 & Alternate. No allowance
 for Future Wearing Surface.
- DESIGN STRESSES**
 $f_c = 20,000$ p.s.i. M183 Structural Steel (New)
 $f_s = 18,000$ p.s.i. AT Exist. Str. Steel
 $f_s = 24,000$ p.s.i. New Reinforcement Steel
 $f_c = 1400$ p.s.i. New Substructure
 $v = 56.2$ p.s.i. Allowable Shear in F19
 $n = 9$
 Deck Slab: (Not on this contract)
 $f_y = 60,000$ p.s.i. (Load Factor Design)
 $f_c = 3,500$ p.s.i.
- DESIGN SPECIFICATIONS**
 AASHTO 1977 & Interim Specifications 1978,
 1979, 1980, 1981 & 1982

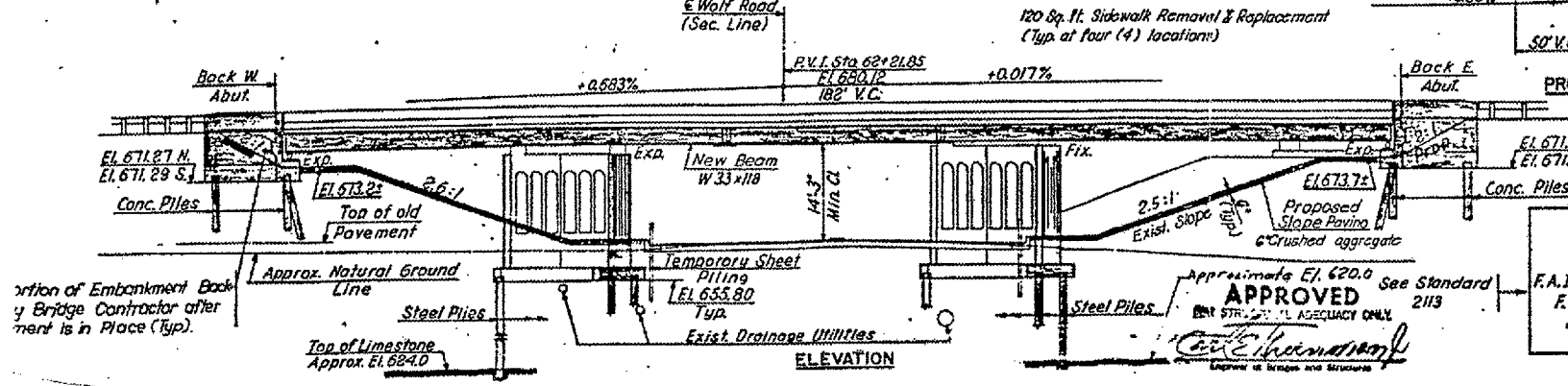
EXISTING STRUCTURES:
 Existing bridge No. 016-0086 of Sta. 62+21.85
 was built in 1852 as F.A. Route 131-Project
 U.I. 201 (21), Section 062-3739.1 M.F.T.
 It is a 3-Span Continuous W-Beam Bridge
 with 7" Concrete Deck 102' out to cut
 structure, 167'-11 1/2" Bk. to Bk. Abutment.



EXISTING PROFILE ALONG MEDIAN EDGE OF PAVEMENT (WOLF ROAD)

Station	P.V.I.	Elevation	Grade
Sta 61+05.85	P.V.I. Sta 61+05.85	EL 679.33	+0.683%
Sta 61+30.85	P.V.I. Sta 61+30.85	EL 679.50	+0.683%
Sta 62+21.85	P.V.I. Sta 62+21.85	EL 680.12	+0.017%
Sta 63+37.85	P.V.I. Sta 63+37.85	EL 680.14	+0.35%
Sta 63+62.85	P.V.I. Sta 63+62.85	EL 680.23	+0.35%

LOCATION NO. 6



PROPOSED PROJECT
 ALONG CROSSROADS

016-0086
 I-210 OVER WOLF ROAD
 M. PALELLI E/10/04

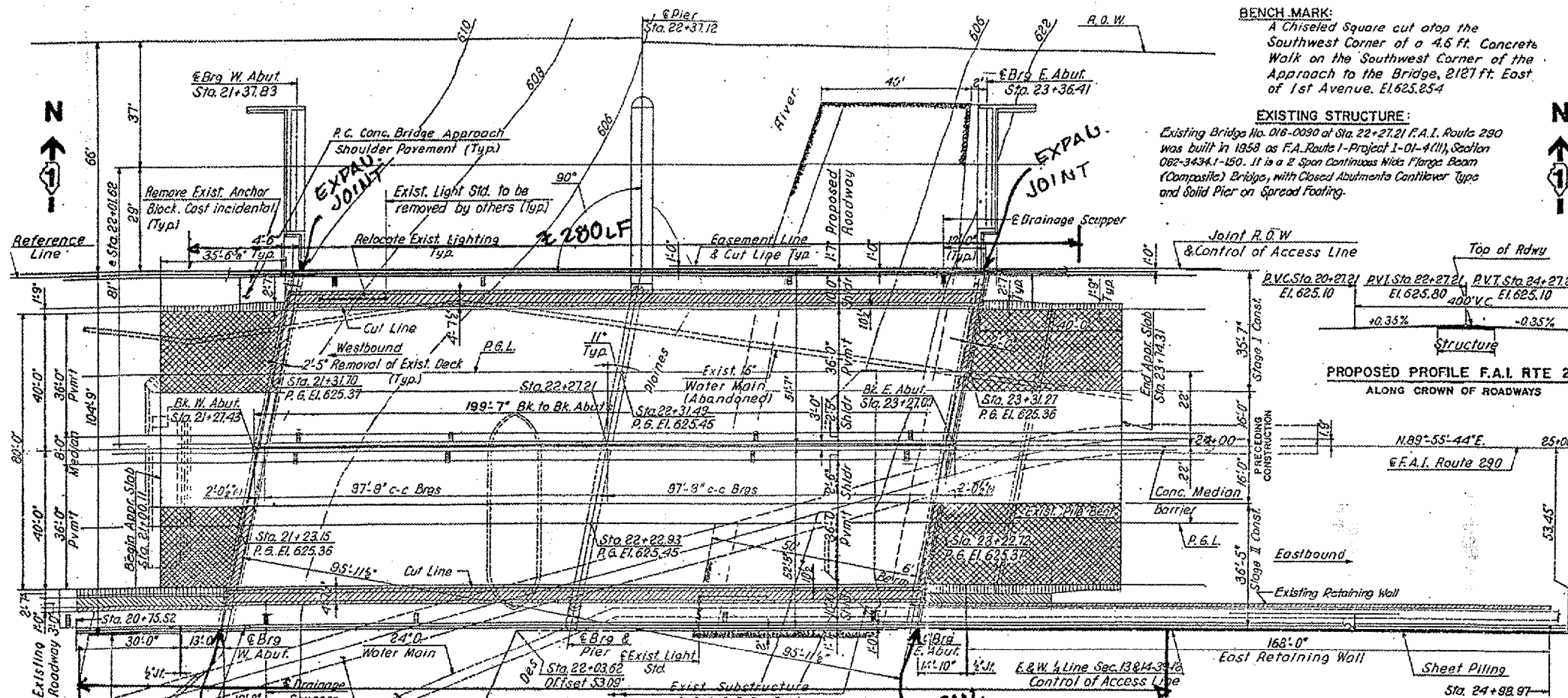
FENCE 370 LF. 8' FENCE
 GATES 4 EA.

Station 62+
 Rebuilt 19
 State of Ill
 F.A.I. Rt. 290 Sec. 13
 F.A. Proj. ECTJ-24
 Loading HS20 &
 St. No. 016-0
 NAME PL

APPROVED
 FOR STRUCTURAL AGENCY ONLY
 [Signature]

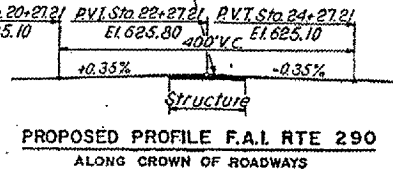
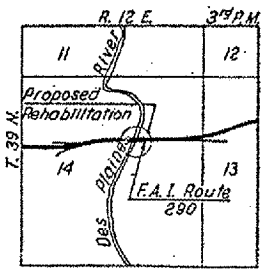
ROUTE Various	SECTION 2004-089 I	COUNTY COOK	TOTAL SHEETS 27	SHEET NUMBER 15
------------------	-----------------------	----------------	--------------------	--------------------

CONTRACT 62833



BENCH MARK:
A Chiseled Square cut atop the Southwest Corner of a 4.6 Ft. Concrete Walk on the Southwest Corner of the Approach to the Bridge, 2127 ft. East of 1st Avenue, El. 625.254

EXISTING STRUCTURE:
Existing Bridge No. 016-0090 of Sta. 22+27.21 F.A.I. Route 290 was built in 1959 as F.A. Route 1-Project 1-01-4(11), Section 062-3434.1-150. It is a 2 Span Continuous Wides Flange Beam (Composite) Bridge, with Closed Abutments Cantilever Type and Solid Pier on Spread Footing.



- NOTES**
- DESIGN LOADING:** HS20-44 & All. No allowance for future Wearing Surface
 - DESIGN STRESSES:**
 - (Exist. Construction)
 - $f_s = 18,000$ p.s.i. Exist. A7 Structural Steel
 - $f_s = 20,000$ p.s.i. Exist. Reinforcing Steel
 - $f_c = 1,200$ p.s.i. (Superstructure)
 - (New Construction)
 - $f_s = 20,000$ p.s.i. New M183 Structural Steel
 - $f_s = 24,000$ p.s.i. New Reinf. Steel Allowable
 - $f_c = 1,400$ p.s.i. (Superstructure) Stress Design
 - DESIGN SPECIFICATIONS:** AASHTO 1977 and Interim Specifications 1978, 1979, 1980, 1981, 1982 and 1983.

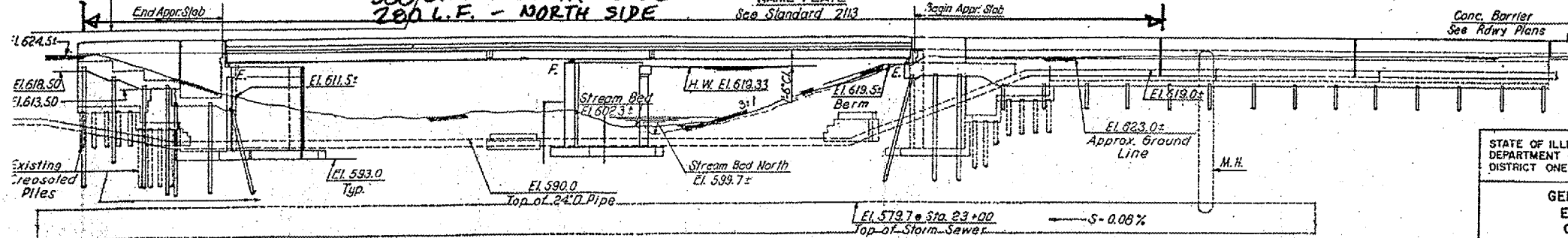
WATERWAY INFORMATION

Drainage Area - 473.40 Low Grade Elev - 621.17 • Sta 9+50

Flood Yr.	Freq. & C.F.S.	Opening Sq. Ft.		Head - Ft.		Headwater El.		
		Exist.	Prop.	H.W.E.	Exist.	Prop.	Exist.	Prop.
Design	50	15710	1975	1975	618.0	0.0	618.0	618.0
Base	100	6265	2067	2067	618.48	0.0	618.48	618.48
Overlapping	300							
Max. Calc.	500	7250	2230	2230	619.33	0.0	619.33	619.33

BRIDGE FENCE RAILING
300 L.F. - SOUTH SIDE
280 L.F. - NORTH SIDE

LOCATION NO. 7



ELEVATION Legend:

- Indicates Conc. Removal
- Indicates Approach Slab Removal and Replacement
- Indicates Curb & Gutter Removal
- Indicates Structural Sidewalk Removal

STATE OF ILLINOIS
DEPARTMENT OF TRANSPORTATION
DISTRICT ONE

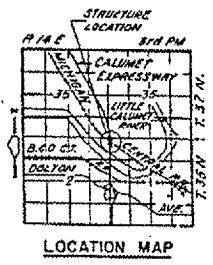
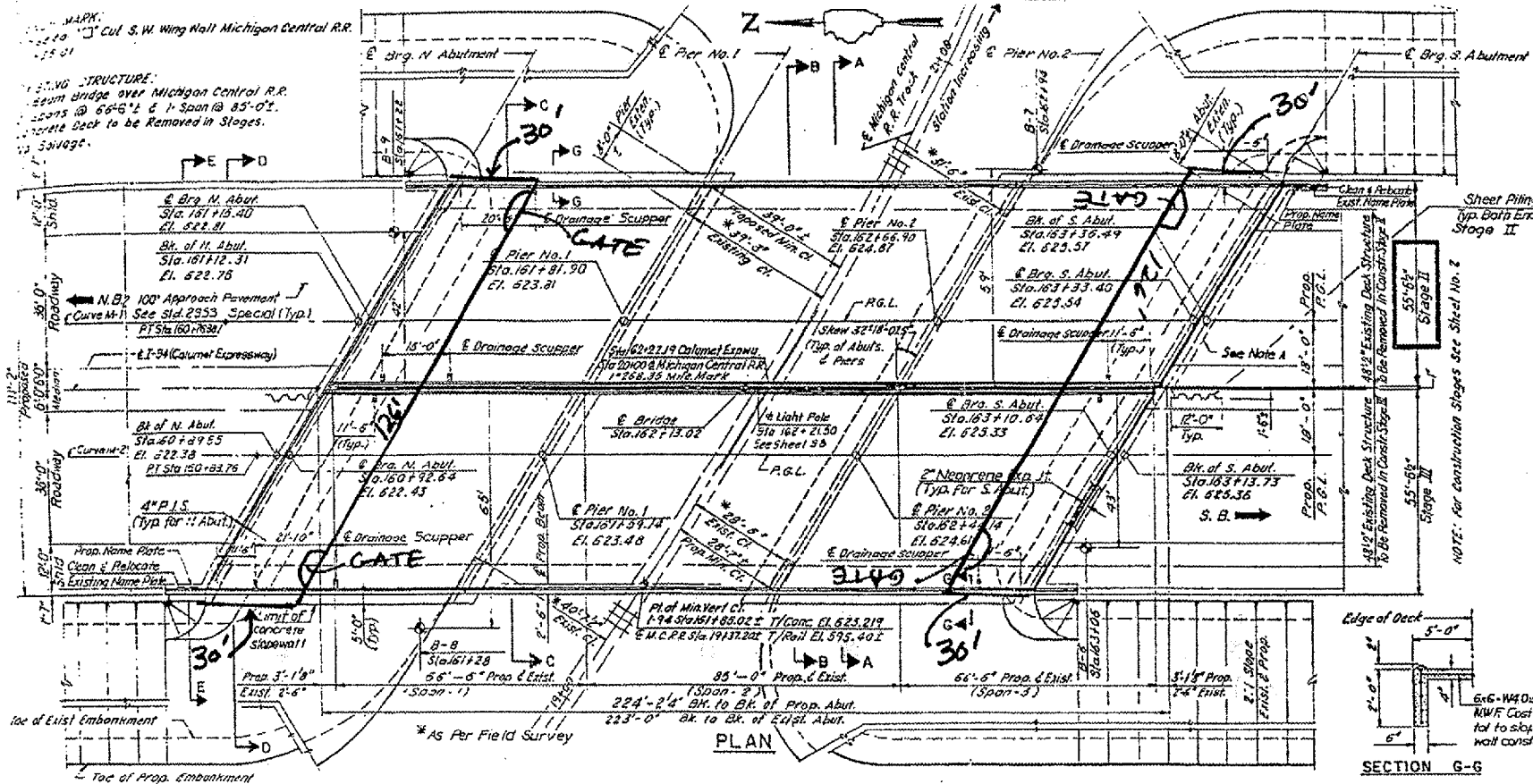
EISENHOWER EXPRESSWAY
F.A.I. ROUTE 290
REHABILITATION PROJECT

GENERAL PLAN & ELEVATION
EISENHOWER EXPRESSWAY
OVER DES PLAINES RIVER

COOK COUNTY SEC. 1983-151
MEDWORTH ENGINEERING INC. ENGINEERING CONSULTANTS
DESIGNED BY: B.S. SCALE: AS SHOWN
CHECKED BY: B.S.
DRAWN BY: B.S.

ROUTE Various	SECTION 2004-089I	COUNTY COOK	TOTAL SHEETS 27	SHEET NUMBER 16
------------------	----------------------	----------------	--------------------	--------------------

CONTRACT 62833



DESIGN SPECIFICATIONS:
 A.A.S.H.T.O. 1983 Standard Specifications for Highway, Bridges and 1984 thru 1988 Interims.
 Standard Specifications for Roads and Bridge Construction State of Illinois dated July 1, 1988.
 1983 Code Specifications for Seismic Design of Highway Bridges with 1985 & 1988 Interim Specifications.

DESIGN CRITERIA
 Live Load: HS 20 & ALT.
 Allow 25 PSF for future wearing surface.

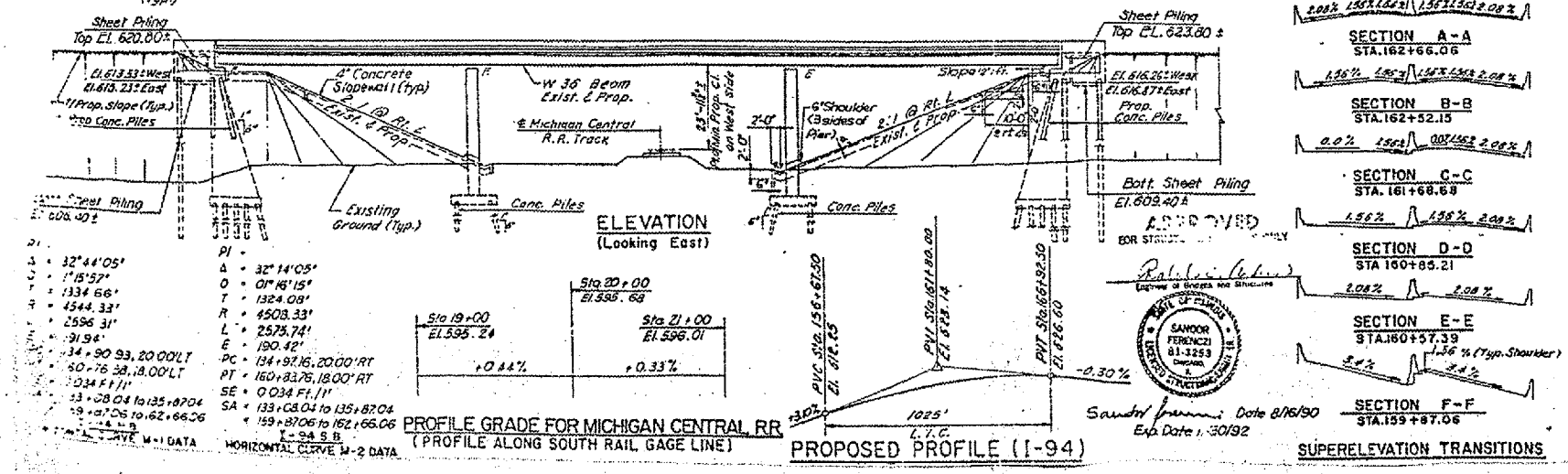
DESIGN STRESSES:
 Existing Structural Steel
 $f_s = 18,000$ psi, A7
 Proposed Structural Steel
 $f_s = 20,000$ psi, (A193 Steel)
 Reinforced Concrete
 $f_c = 4500$ psi - Superstructure
 $f_c = 4000$ psi - Substructure

REINFORCEMENT:
 $f_y = 60,000$ psi - Superstructure
 $f_y = 24,000$ psi - Substructure

⊕ Indicates Boring Location
 Note:
 A. Limits of Porous Granular Embankment (Typ. both Abutments).
 Floor at 45°.

STATION 162+13.02
 RE-BUILT BY
 STATE OF ILLINOIS
 F.A.I.R.T. 94 SEC.
 F.A. PROJ. FIR-94-3(305)
 LOADINGS HS 20 & ALT.
 STR. No. 015-0157

LOCATION NO. 8

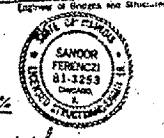


NAME PLATE
 See Standard 2113

STAGE II - N.B. MAINLINE CONSTRUCTION

STATE OF ILLINOIS
 DEPARTMENT OF TRANSPORTATION

PLAN AND ELEVATION
 F.A.I.-94 OVER MICHIGAN CENTRAL R.R.
 COOK COUNTY
 STA. 162+13.02 SN. 016-0157
 SCALE DRAWN BY KC & ING
 8/11 AUG. 1990 CHECKED BY L.M.

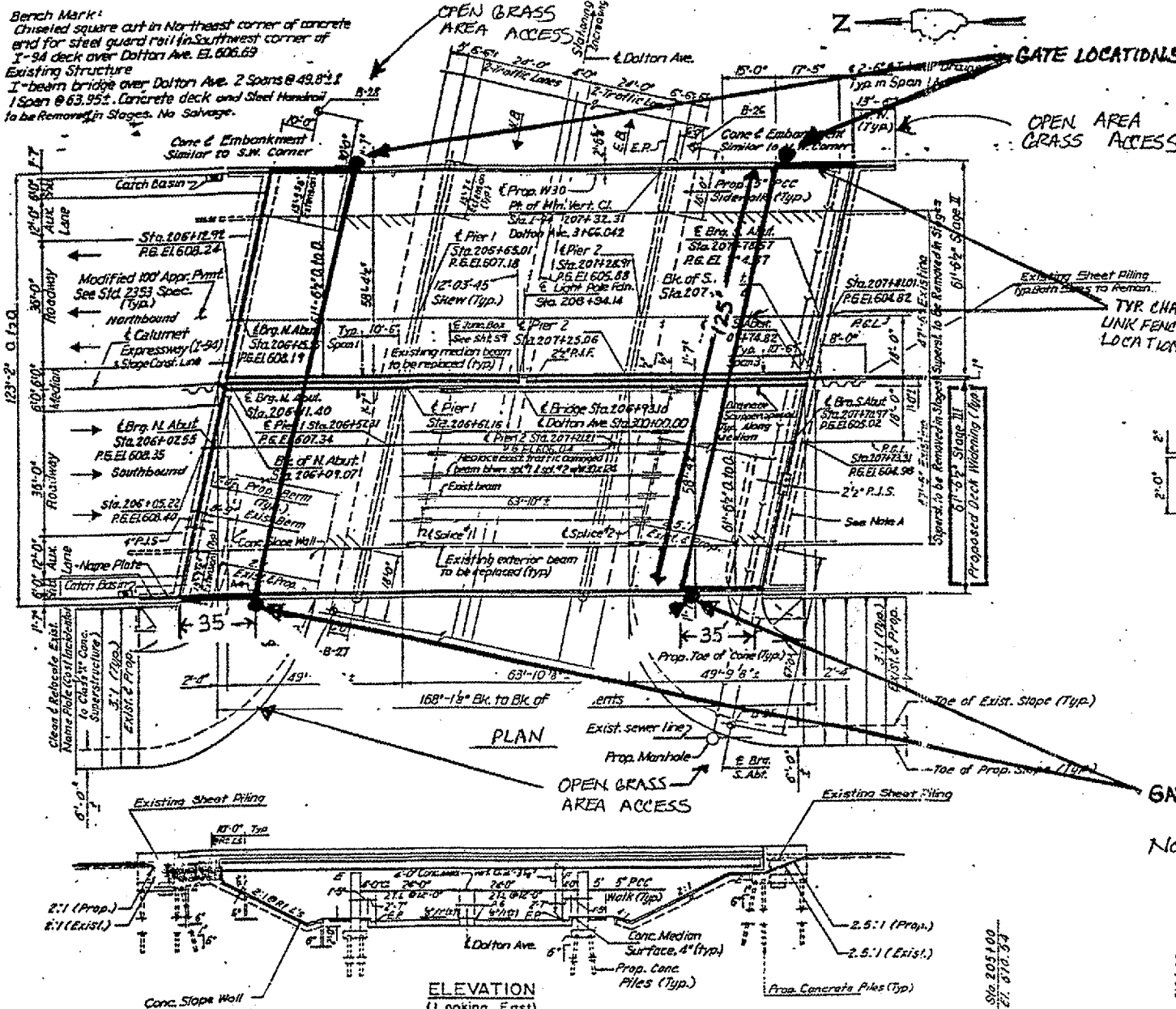


Sandor Ferenczi Date 8/16/90
 Exp. Date 1/30/92

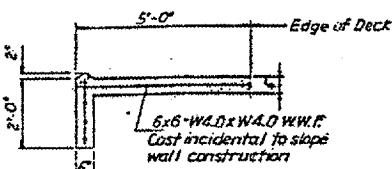
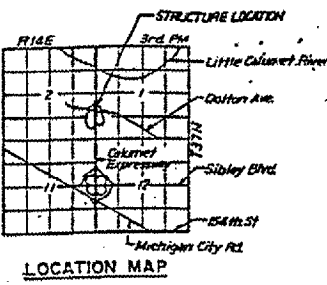
ROUTE Various	SECTION 2004-089I	COUNTY COOK	TOTAL SHEETS 27	SHEET NUMBER 18
------------------	----------------------	----------------	--------------------	--------------------

CONTRACT 62833

BRIDGE NO.: 016-0161
I-94 OVER DOLTON AVE.



GENERAL NOTES:
DESIGN SPECIFICATIONS:
 A.A.S.H.T.O. 1983 Standard Specifications for Highway Bridges, and 1984 thru 1988 Interims.
 1983 Guide Specifications for Seismic Design of Highway Bridges with 1985 and 1988 Interim Specifications.
DESIGN CRITERIA:
 Service Load Design - Load Factor for Deck
 Live Load = HS 20-44 & AIT



Allow 25 psf for Future Wearing Surface
DESIGN STRESSES
 Existing Structural Steel
 $f_s = 18,000$ psi, ASTM A7 & $f_s = 20,000$,
 ASTM A36 (M183 Steel Beam 16 Repair)
 Proposed Structural Steel
 $f_s = 20,000$ psi, (M183 Steel)
 Reinforced Concrete
 $f_c = 3500$ psi - Superstructure Composite Deck Slab
 $f_c = 1400$ psi - Substructure
 $f_c = 1000$ psi with earth pressure
 $n = 9$

REINFORCEMENT:
 $f_y = 60,000$ psi - Superstructure
 $f_s = 24,000$ psi - Substructure

TRAFFIC:
 All barricades, signs and other traffic control devices and their placement installed for the purpose of temporarily maintaining traffic during construction shall be in full compliance with the Illinois State Manual on Uniform Traffic Control Devices unless otherwise noted. The Contractor shall procure, install and remove all temporary pavement markings as per the traffic phasing shown on the plans or as directed by the Engineer. See Roadway Plans.

STATION 6+93.11
 RE-BUILT BY
 STATE OF ILLINOIS
 PROJECT ACCT-162811-9A
 2(207) TO
 LOADING HS 20 & ALL
 STR. No. 016-0161

NAME PLATE
 See Standard 2113

Indicates Removal of Existing Concrete Deck Slab.
 Indicates Boring Locations.

NOTE: GO 35' FROM ABUTMENT AND RUN FENCE ACROSS TO OTHER SIDE.

LOCATION NO. 10

DESCRIPTION	UNIT	QUANTITY
CHAIN LINK FENCE 8'	FOOT	346.00
CHAIN LINK GATES 8'X6' SINGLE	EACH	4.0

APPROVED
 FOR STRUCTURAL ADEQUACY ONLY
 Robert E. Anderson
 Engineer of Bridges and Structures



Sauder Bennett Date 8/16/90
 Exp. Date 11/30/92

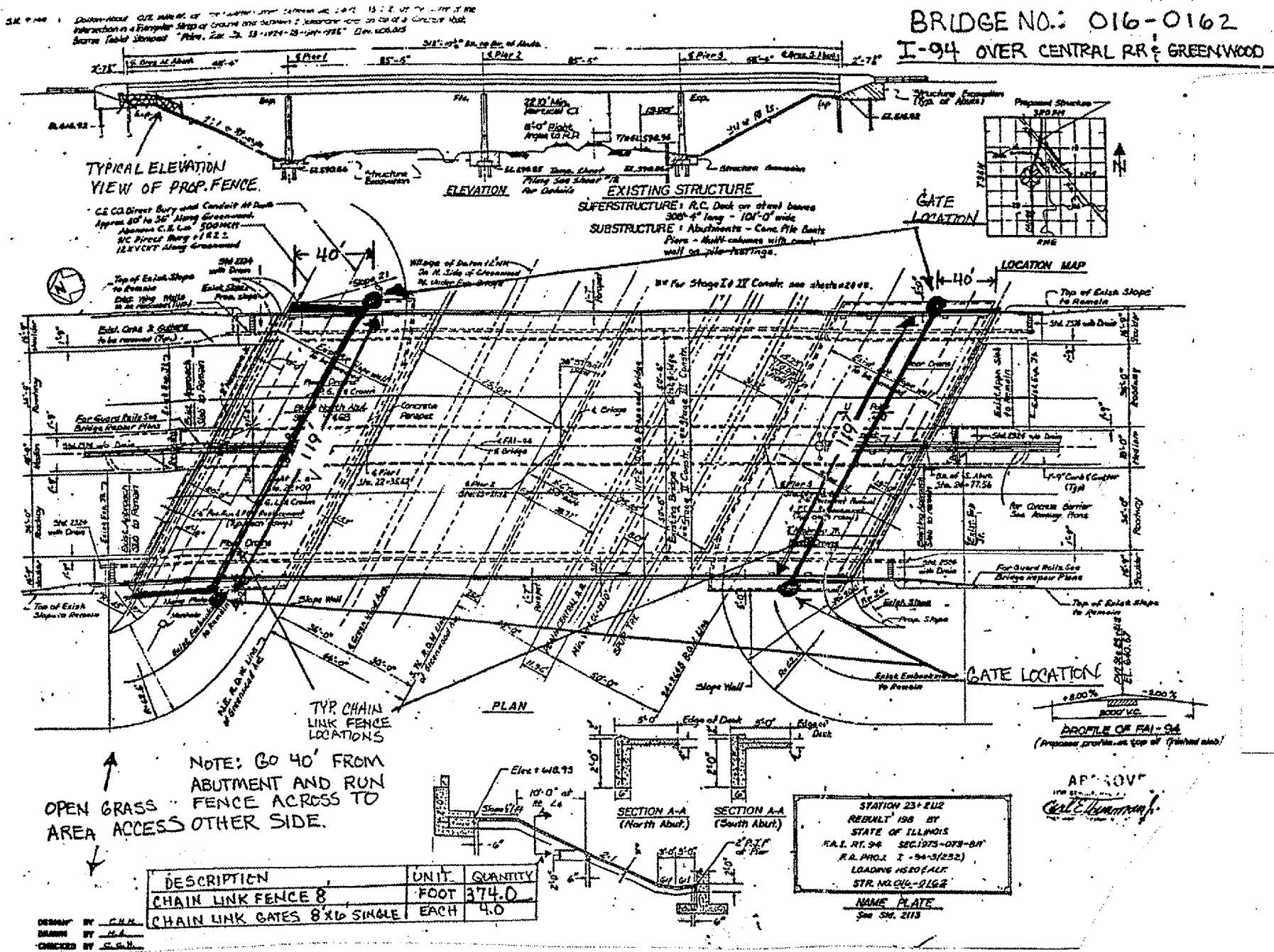
PROPOSED PROFILE I-94 PROPOSED PROFILE - DOLTON AVE.

STAGE III - S.B. MAINLINE CONSTRUCTION
 STATE OF ILLINOIS
 DEPARTMENT OF TRANSPORTATION
 PLAN AND ELEVATION
 I-94 OVER DOLTON AVE.
 COOK COUNTY
 STA. 206+93.10 S.N. 016-0161
 SCALE
 DATE: NOV. 1991
 DRAWN BY KCB/IMG
 CHECKED BY L.W.

ROUTE	SECTION	COUNTY	TOTAL SHEETS	SHEET NUMBER
Various	2004-0891	COOK	27	19

CONTRACT 62833

BRIDGE NO.: 016-0162
I-94 OVER CENTRAL RR & GREENWOOD



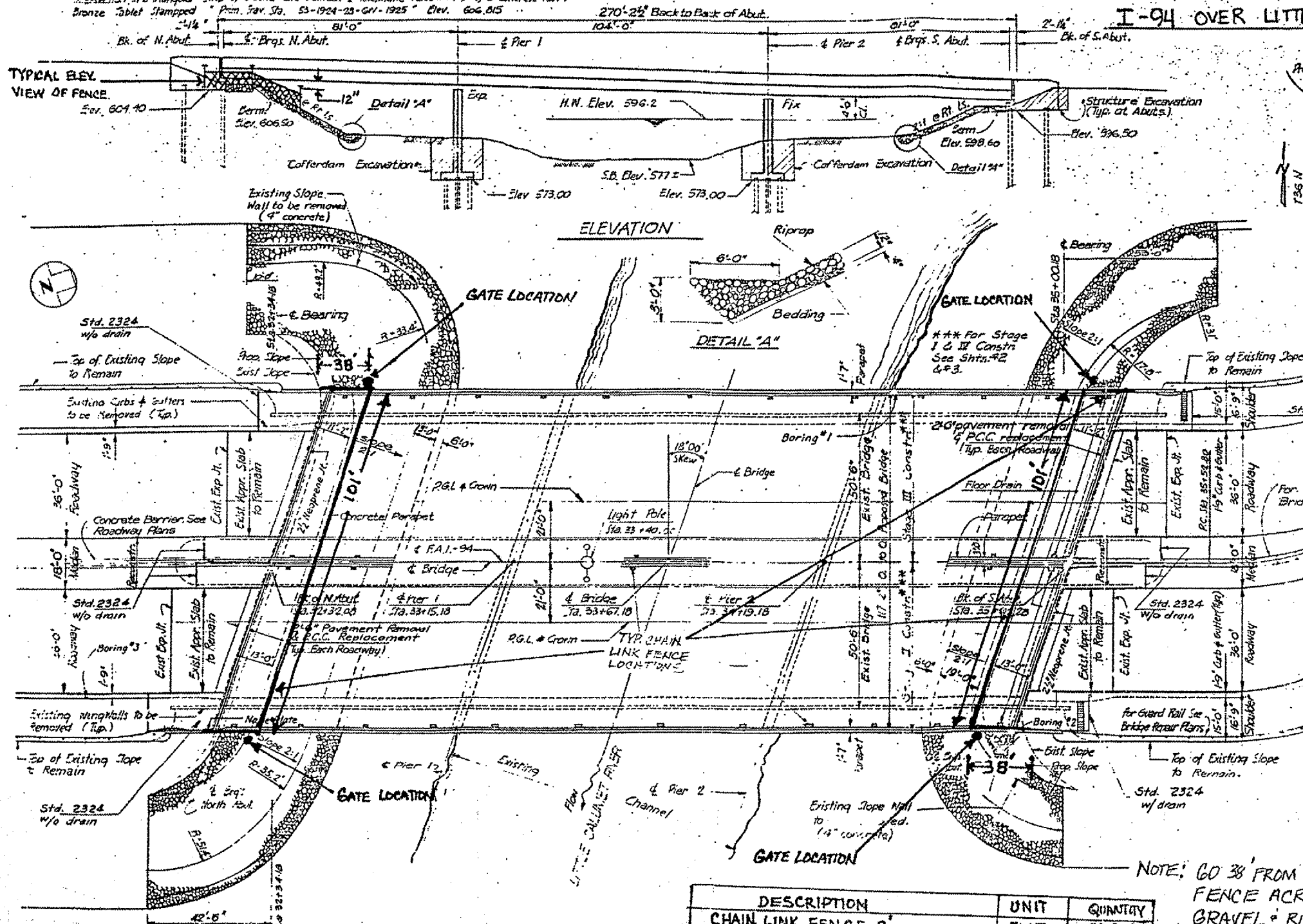
LOCATION NO. 11

ROUTE	SECTION	COUNTY	TOTAL SHEETS	SHEET NUMBER
Various	2004-0891	COOK	27	20

CONTRACT 62833

BRIDGE No.: 016-0163
I-94 OVER LITTLE CALUMET RIVER

Station - About 0.12 mile N. of the Quarter Corner between Sec. 11 & 12, 93° S.E. of the Center of the intersection in a Triangular Strip of Ground and Between 2 Telephone Poles on top of a Concrete Post. Bronze Tablet Stamped "P.M. Tav. Sta. 53-1924-23-GR-1925" Elev. 606.815



LOCATION NO. 12

WATERWAY INFORMATION
 Q 50 = 4890 cfs
 DHNE = 596.2
 Waterway Opening = 2200
 Q 100 = 5290 cfs
 HWE (100 yr) = 596.0
 Regulatory Flood
 Discharge = 8560 cfs
 Regulatory Flood
 Elev. = 598.4

CURVE DATA
 A = 23°24'14"
 D = 1'16"
 T = 936.89'
 L = 1847.67'
 E = 96.02'
 R = 4523.44'

NOTE: GO 38' FROM ABUTMENT AND RUN FENCE ACROSS TO OTHER SIDE GRAVEL & RIPRAP SLOPE ACCESS AREA IS VERY POOR & LIMITED (HEAVY VEGETATED AREA)

DESCRIPTION	UNIT	QUANTITY
CHAIN LINK FENCE 8'	FOOT	330.0
CHAIN LINK GATES 8'x6' SINGLE	EACH	4.0

EXISTING STRUCTURE
 SUPERSTRUCTURE: P.C. Deck on steel Beams 52'-0" long 10'-0" wide
 SUBSTRUCTURE: Abutments - Conc. Pile Bent; Piers - 2x2x12 on pile

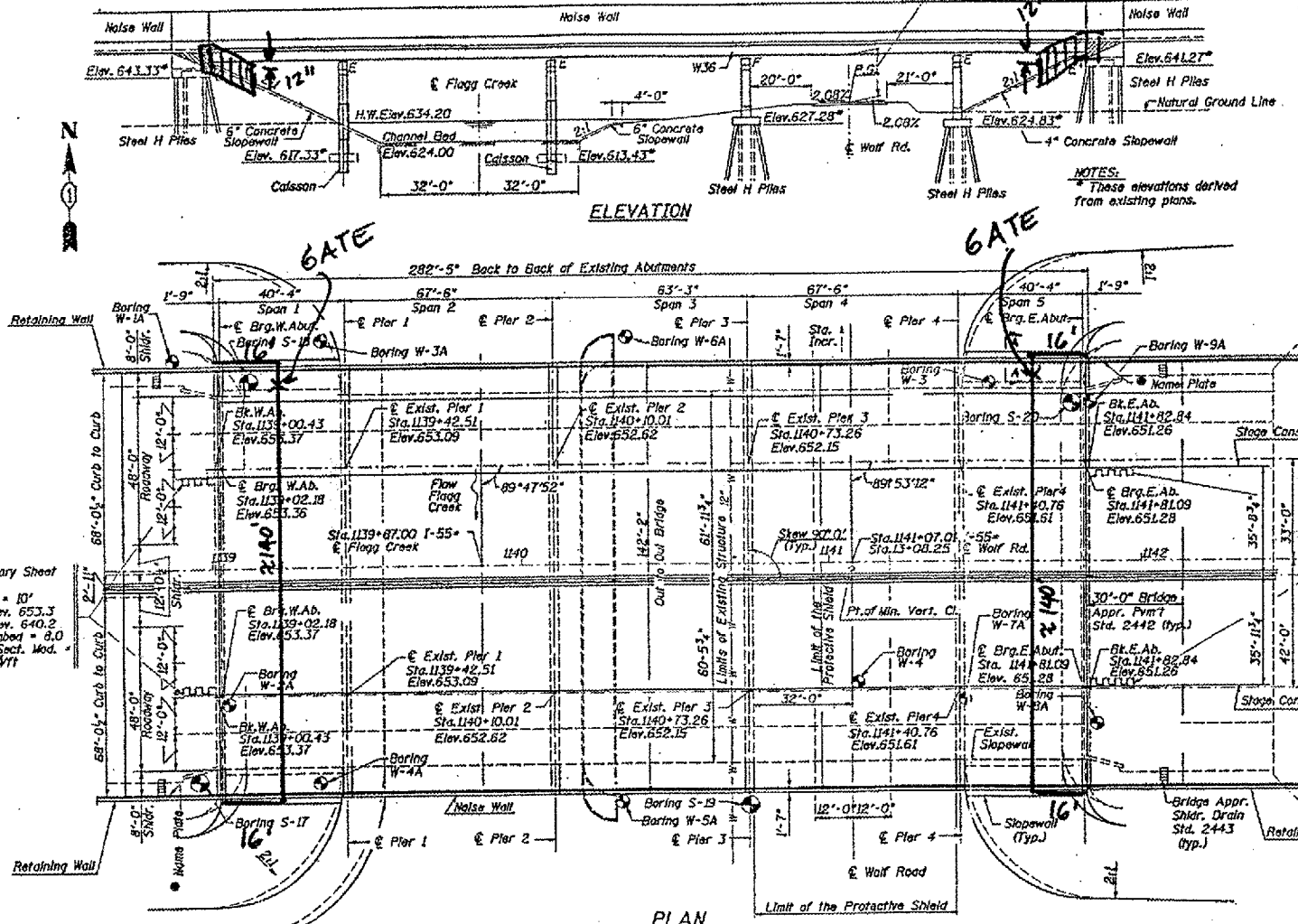
ROUTE Various	SECTION 2004-089I	COUNTY COOK	TOTAL SHEETS 27	SHEET NUMBER 21
------------------	----------------------	----------------	--------------------	--------------------

CONTRACT 62833

B.M. * 5x12" x 12" chisled in top of Southwest part of lightpole *SEF1 at the entrance ramp of I-294 North to I-55 South. Elev. 657.17

Existing Structure: S.V. 015-0002 is a 5 span, 282'-5" sk. to oc. of abutments bridge on stub abutments. Built as F.A.I. Rte. 55, Sta. 1202-562+48 in 1963. Superstructure is 122'-5" o. to a R.C. slab with continuous W36 steel beams. Traffic shall be maintained during the rehabilitation by stage construction. No Salvage, except the existing aluminum handrail shall be removed and delivered to the District maintenance yard, as directed by the Engineer.

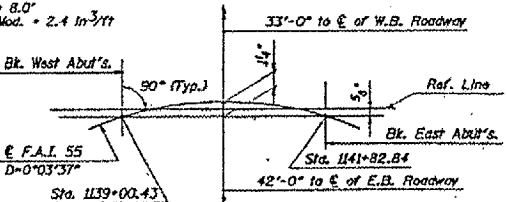
NOTES:
If the contractor chooses to alter the temporary cantilevered sheet piling design requirements shown on the plans for lesser design requirements, than full design submittals with the required seals will be expected by the Department, for review and approval.
Remove, clean and relocate the existing name plates next to the new name plate. Cost included in Name Plate, each.



016-0003
6' FENCE
344 L.F.
2 GATES

LOCATION NO. 13

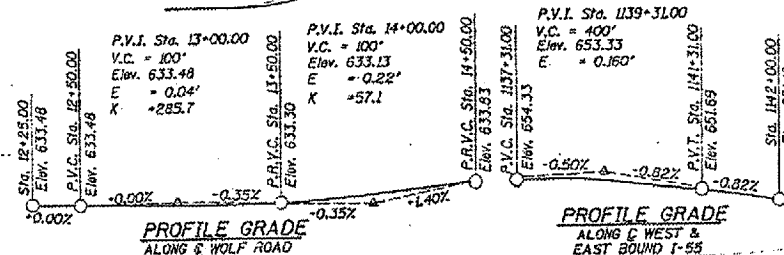
CURVE (40)
P.I. Sta. = 1141+07.00
Δ = 0° 29' 00"
D = 0° 03' 37"
R = 94840.94'
T = 400.03'
L = 800.06'
E = 0.84'
SE = Normal Crown



DIAGRAMMATIC LAYOUT

WATERWAY INFORMATION

Flood	Freq. Yr.	C.F.S.	Opening Sq. Ft.		Net H.W.E.	Head-Ft.		Headwater EL.	
			Exist.	Prop.		Exist.	Prop.	Exist.	Prop.
Design	50	2100	835.0	835.0	633.20	0.00	0.00	633.20	633.20
Base	100	2500	913.0	913.0	633.60	0.00	0.00	633.60	633.60
Max. Calc.	500								



APPROVED
FOR STRUCTURAL REQUIREMENTS ONLY
Ralph E. Anderson



REVISIONS	Name	Date

STATE OF ILLINOIS
DEPARTMENT OF TRANSPORTATION
GENERAL PLAN AND ELEVATION
I-55 OVER WOLF ROAD & FLAGG CREEK
COOK COUNTY
SCALE: NONE
DATE: NOV. 1995
GANNETT FLEMING, INC.
Chicago, Illinois

ROUTE Various	SECTION 2004-089 I	COUNTY COOK	TOTAL SHEETS 27	SHEET NUMBER 22
------------------	-----------------------	----------------	--------------------	--------------------

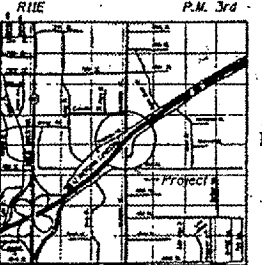
CONTRACT 62833

Bench Mark
Top of existing Northeast Wingwall El. 734.38

Existing Structure: S.N. 022-0003 is a three span simple P.P.C. 1-beam structure with a total length of 171'-11" and a total out to out width of 134' 7". The structure was constructed in 1959, rehabilitated and widened in 1978, under section 22110-1

The road will be kept open at all times by utilizing staged construction. (See cross-section for staging and deck removal. No salvage.

STATION 1023+92.08
REBUILD 199
STATE OF ILLINOIS
F.A.I. RT. 55 SEC. 22-110-1
F.A. PROJECT NO.
LOADING HS20 & ALT.
STR. NO. 022-0003
NAME PLATE
See Std. 2113

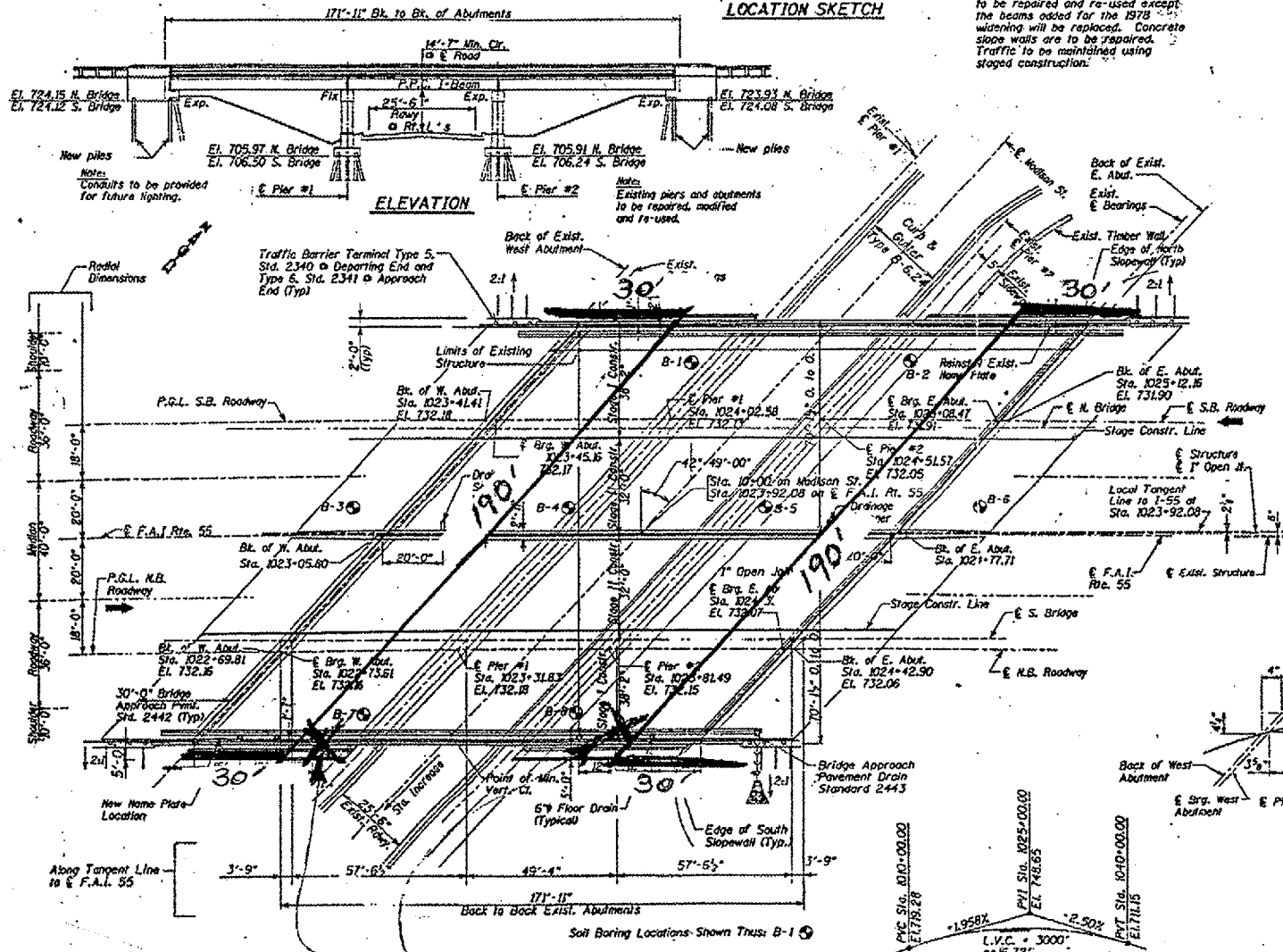


STATE OF ILLINOIS
DEPARTMENT OF TRANSPORTATION

WORK TO BE PERFORMED
The existing concrete deck is to be removed and replaced with a new concrete deck widened 12' on each side. The structure is to be raised to provide 14'-6" minimum vertical clearance over Madison Street. The existing bearings are to be replaced with elastomeric type bearings and the simple span beams to be made continuous. Remove existing wing walls and replace as shown. Existing bedms and diaphragms and substructure to be repaired and re-used except the beams added for the 1978 widening will be replaced. Concrete slope walls are to be repaired. Traffic to be maintained using staged construction.

DESIGN SPECIFICATIONS
1992 AASHTO, 1993 & 1994 Interims
LOADING HS20-44 & ALT.
Allow 25" / sq. ft. for future wearing surface
DESIGN STRESSES
FIELD UNITS
f_c = 5,000 psi
f_y = 60,000 psi (AISC) / 60,000 psi (AISC)
f_y = 36,000 psi (ASTM Grade 50)
EXISTING PPC UNITS
CONCRETE
f_c = 5,000 psi
f_{ci} = 4,000 psi
PRESTRESSING STEEL
f_{pu} = 248,000 psi (1959 Constr.)
f_{pu} = 173,600 psi (1959 Constr.)
Strands = # 4
NEW P.P.C. UNITS
CONCRETE
f_c = 5,000 psi
f_{ci} = 4,000 psi
PRESTRESSING STEEL
f_{pu} = 270,000 psi
f_{pu} = 201,960 psi (Low Relaxation)
strands = # 4

LOCATION NO. 14



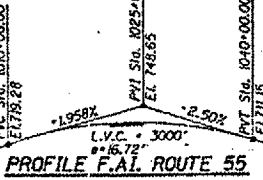
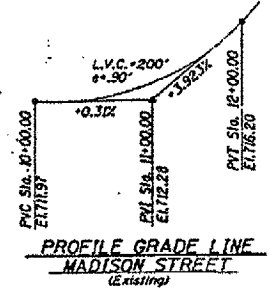
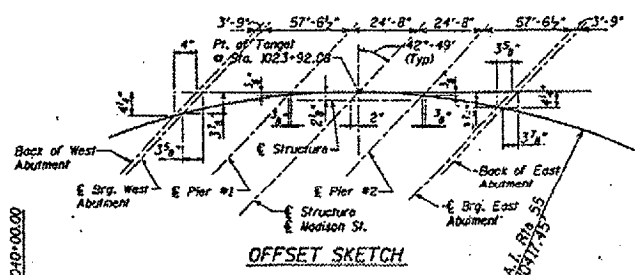
SEISMIC DATA
Seismic Performance Category (SPC) = II
Bedrock Acceleration Coefficient (A) = (1.04)
Site Coefficient (S) = 1.0

CURVE DATA
F.A.I. ROUTE 55
Δ = 17°-17'-00"
D = 0°-33'-00"
R = 10417.45'
T = 15831.25'
E = 108.27'
L = 3142.42'
SE = 0.015 / ft.
P.L. Sta. 1034+34.03

X - GATES 2EA
FENCE 500 LIN.FT.

APPROVED
FOR STRUCTURAL ADEQUACY ONLY
Paul E. Osterman
Engineer of Structures and Structures

10-20-95
DATE EXAMINED
11-30-96
BY LICENSED ENGINEER
Brian C. Osterman
SEAL



GATE LOCATIONS

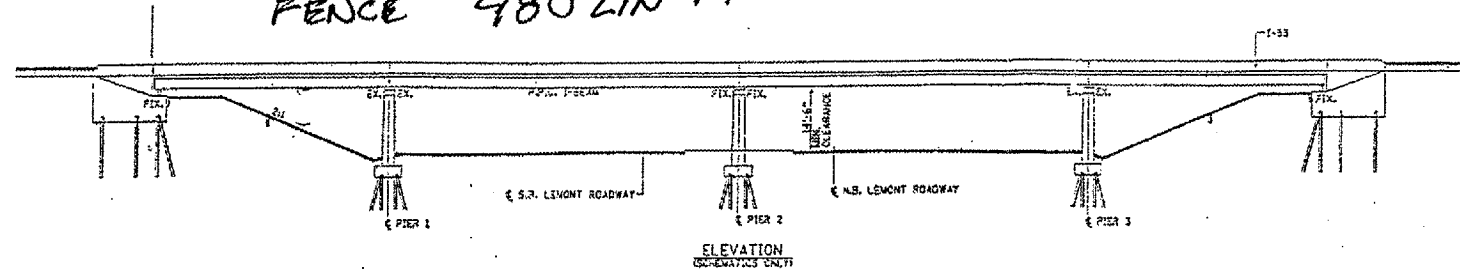
SHEET 1 OF 32
ILLINOIS DEPARTMENT OF TRANSPORTATION
GENERAL PLAN AND ELEVATION
F.A.I. ROUTE 55 OVER MADISON STREET
DUPAGE COUNTY
SECTION 22-110-1
STA. 1023+92.08 STRUCTURE NO. 022-0003
SCALE: VERT. DATE: 11/22/96

REVISIONS	DATE

ROUTE	SECTION	COUNTY	TOTAL SHEETS	SHEET NUMBER
Various	2004-0891	COOK	27	23

CONTRACT 62833

I-55 / LEMONT RD SN. 022-0001
 X-2 GATES
 FENCE 480 LIN FT

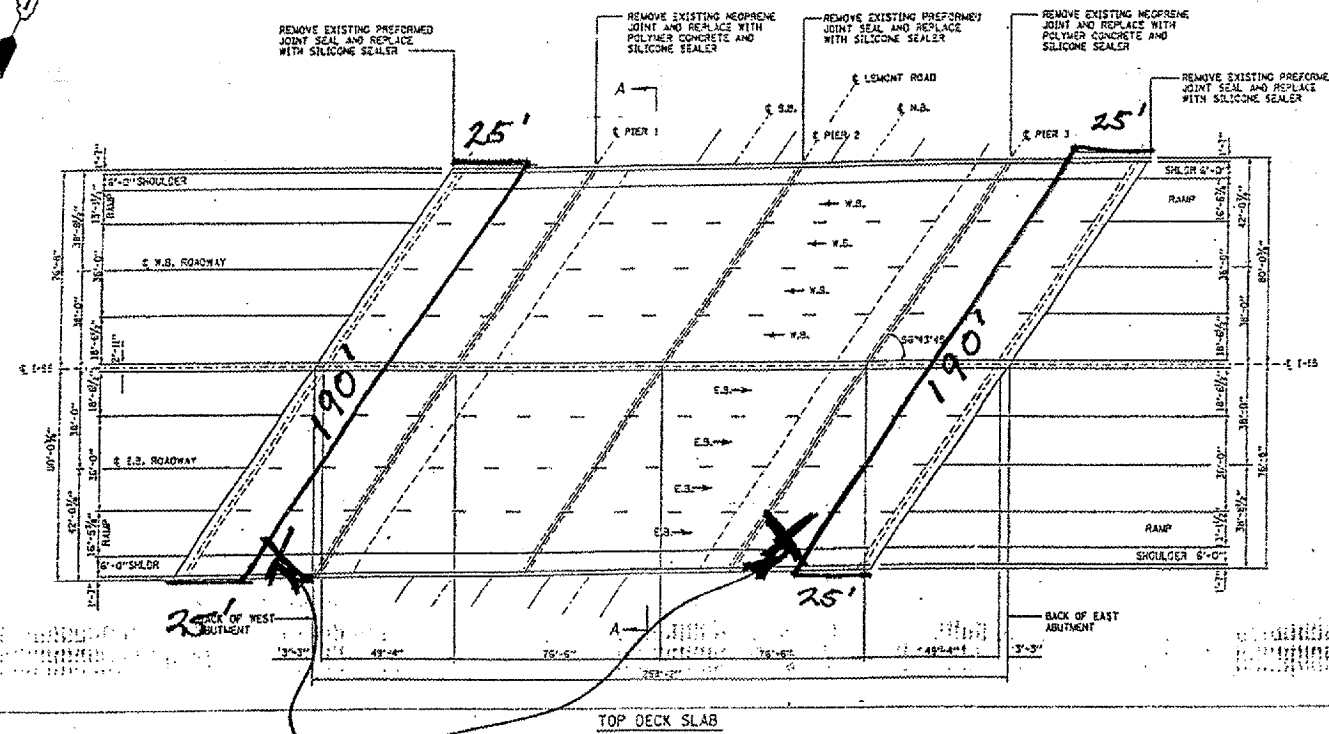


GENERAL NOTES

PLAN DIMENSIONS AND DETAILS RELATIVE TO EXISTING STRUCTURES HAVE BEEN TAKEN FROM EXISTING PLANS AND ARE SUBJECT TO NOMINAL CONSTRUCTION VARIATIONS. IT SHALL BE THE CONTRACTOR'S RESPONSIBILITY TO VERIFY SUCH DIMENSIONS AND DETAILS IN THE FIELD AND MAKE NECESSARY APPROVED ADJUSTMENTS PRIOR TO CONSTRUCTION OR ORDERING OF MATERIALS. SUCH VARIATIONS SHALL NOT BE CAUSE FOR ADDITIONAL COMPENSATION FOR A CHANGE IN THE SCOPE. HOWEVER, THE CONTRACTOR WILL BE PAID FOR THE QUANTITY ACTUALLY FURNISHED AT THE UNIT BID PRICE OR THE WORK.

REMOVAL OF NEOPRENE SHALL BE INCLUDED IN THE COST FOR SILICONE JOINT SEALER.

REMOVAL OF PREFORMED JOINT SEAL SHALL BE INCLUDED IN THE COST OF SILICONE JOINT SEALER.



LOCATION NO. 15

GATE LOCATIONS

REVISIONS	DATE	ILLINOIS DEPARTMENT OF TRANSPORTATION

INTERSTATE ROUTE 55
 OVER LEMONT ROAD
 SN. 022-0001

SCALE: VERT. 1"=10'
 HORIZ. 1"=40'
 DATE: 2/7/02
 DRAWN BY: MVE
 CHECKED BY: RSE

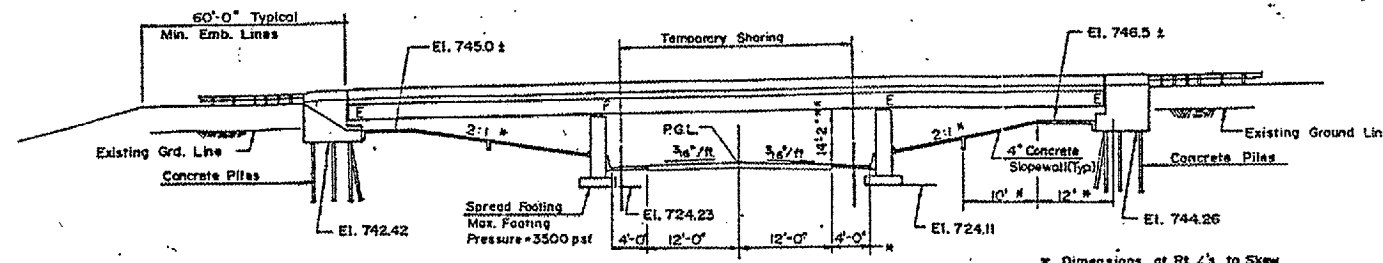
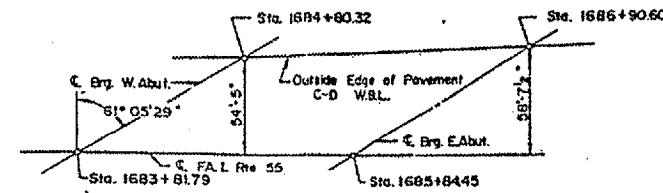
ROUTE Various	SECTION 2004-089I	COUNTY COOK	TOTAL SHEETS 27	SHEET NUMBER 24
------------------	----------------------	----------------	--------------------	--------------------

CONTRACT 62833

Bench Mark: Painted spot on north side of light standard AE-3, South of East Bound Lane Structures. Elevation 751.76

Existing Structure: The existing superstructure three span, non-composite, and continuous with W36 beams and reinforced concrete deck. The existing substructure consists of open concrete abutments on piles and solid concrete piers on spread footings. The structure length is 210'-8" back to back of abutments. The total structure width is 109'-10". Existing S.N. 099-0028

X-2 GATES
FENCE 660 LIN FT.



ELEVATION

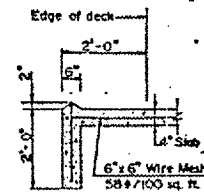
NOTES

- All existing bearings or abutments only shall be replaced with Elastomeric bearings. See sheet S-1C-2-3.
- The 1" longitudinal joint along the median parapet shall be resented as shown on sheet S-1C-2-13.
- See Maintenance of Traffic plans for traffic control during construction.
- Temporary shoring shall be provided during construction as shown or as required. Cost incidental to Structure Excavation Common.
- Sloped walls removed for the construction of Abutments and Piers shall be replaced with Concrete Sloped Wall. See sheet S-1C-2-7.

- Special Bridge Approach Slab Widening See Sheet S-1C-2-22 for details.
- Bridge Approach Shoulder Pavement with drain. See IDOT Standard 2324-6 for details.
- Bridge Approach Shoulder Pavement without drain. See IDOT Standard 2324-6 for details.

* Dimensions at Rt 4's to Skew
** Existing Joliet Road profile shall be lowered in order to maintain existing clearance. See roadway plans for details.

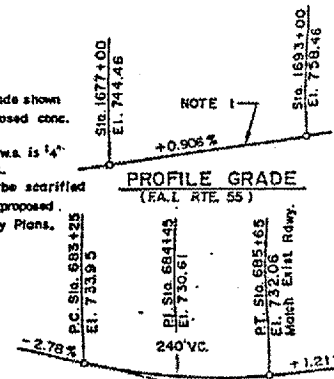
WIDENING ALIGNMENT LAYOUT



SECTION A-A

NOTE 1: Profile grade shown at top of proposed conc. overlay. Profile of existing wa is 1/4" below proposed w.a. Approaches shall be scarified & repaved to meet proposed grade. See Roadway Plans.

PROFILE GRADE (F.A.L. RTE. 55)



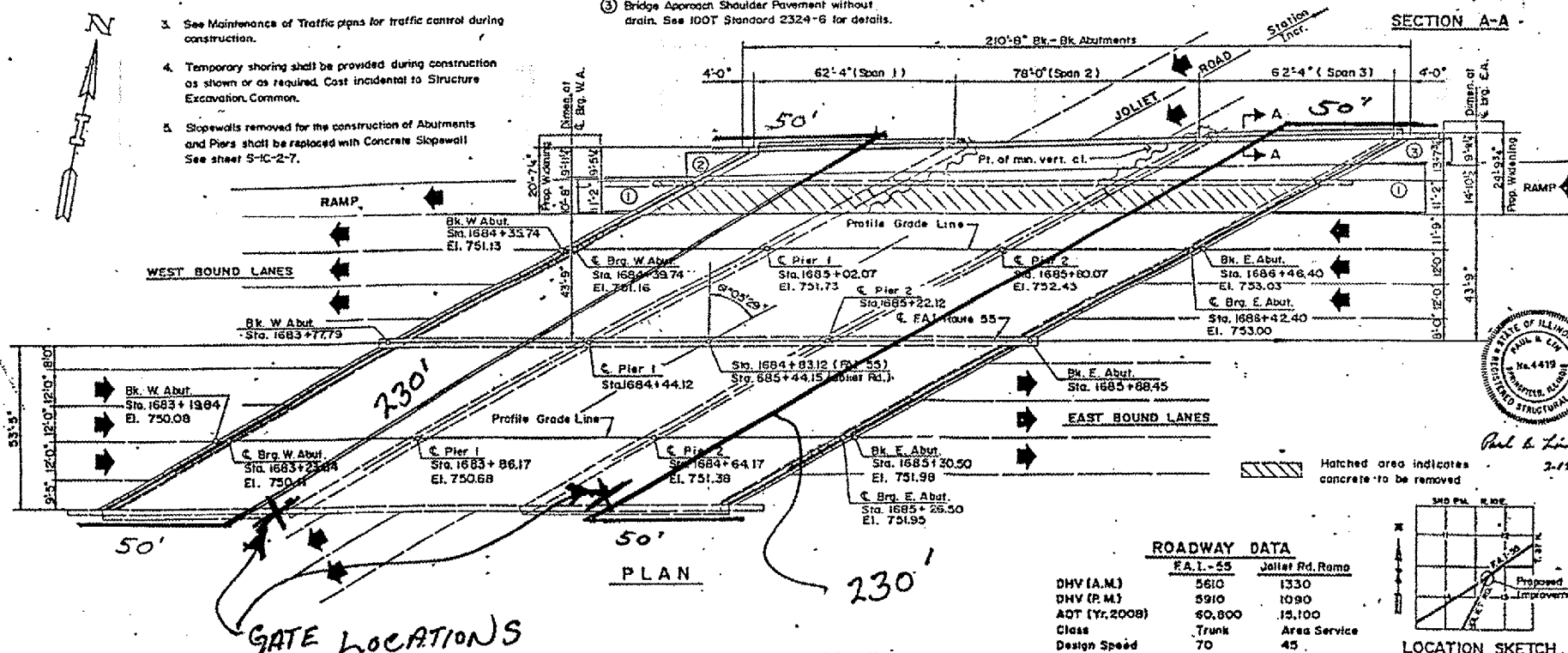
PROFILE GRADE (JOLIET ROAD)

DESIGN CRITERIA (Widened Portion Only)

- DESIGN SPECIFICATIONS:
AASHTO 1983 Standard Specifications for Highway Bridges and all subsequent interims.
1987 Standard Specifications for the Illinois State Toll Highway Authority.
1983 Standard Specifications for Road and Bridge Construction, Illinois Department of Transportation.
- DESIGN LOADING:
Live Load for Highway Bridges - HS20-44 and the Alternate Military Loading.
- Surfacing or Future Surfacing 25 psf (minimum).
- DESIGN STRESSES:
Service Load Design Methods shall be used in the design of all structural elements.

- Reinforced Concrete
f_c - Compressive Strength @ 28 days = 4,000 psi
- Reinforcement
f_y - Yield Strength (Grade 60) = 60,000 psi
f_s - Tension (Grade 60) = 24,000 psi
- Structural Steel
f_y - Yield Strength (AASHTO M-183) = 35,000 psi

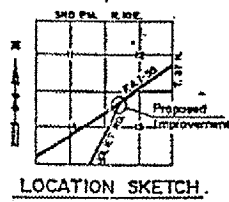
LIVE LOAD DEFLECTION
Maximum deflection due to live load plus impact, shall not exceed the following:



GATE LOCATIONS

ROADWAY DATA

	F.A.L. - 55	Joliet Rd. Ramp
DHV (A.M.)	5610	1330
DHV (P.M.)	5910	1090
ADT (Yr. 2008)	60,800	15,100
Class	Trunk	Area Service
Design Speed	70	45



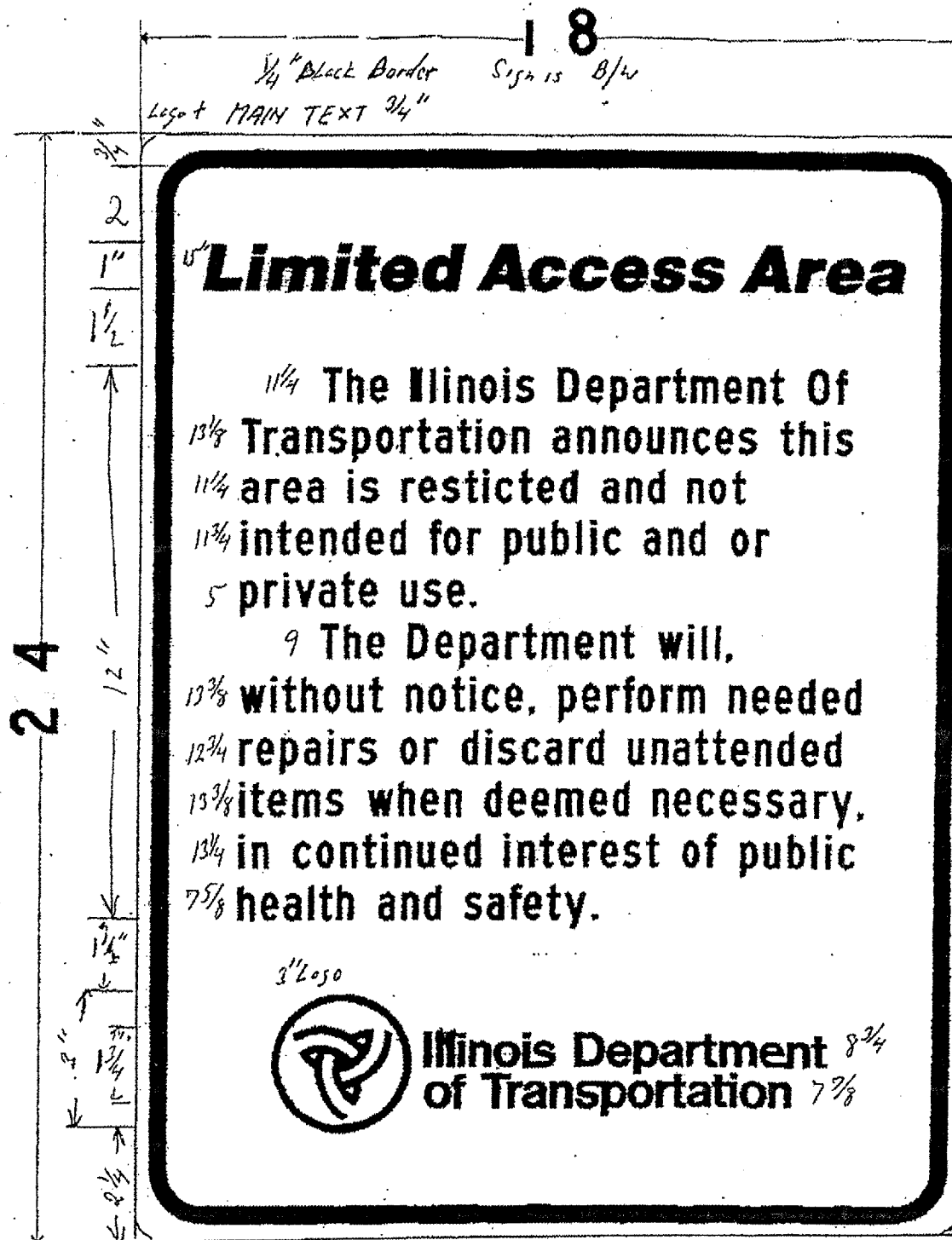
LOCATION SKETCH

REVISIONS		CONTRACT CIP-611
NO.	DATE	
		F.A.L. ROUTE 55 OVER JOLIET ROAD BRIDGE NO. GENERAL PLAN AND ELEVATION

LOCATION NO. 16

ROUTE	SECTION	COUNTY	TOTAL SHEETS	SHEET NUMBER
Various	2004-0891	COOK	27	25

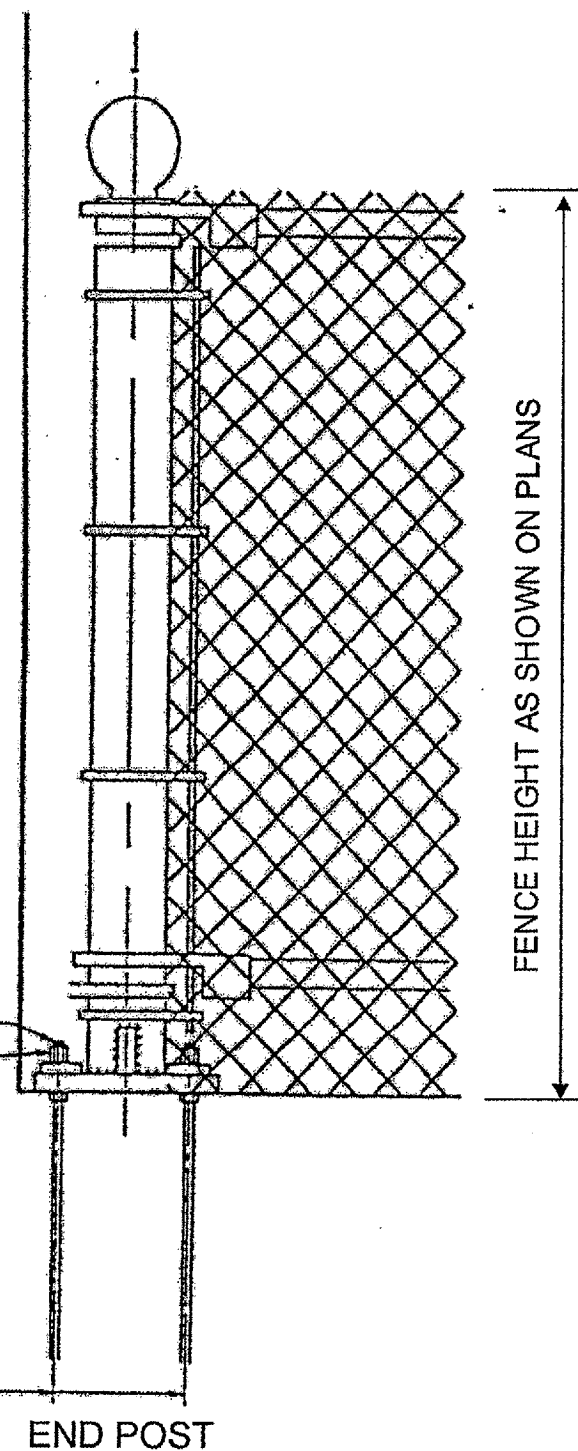
CONTRACT 62833



SIGN LAYOUT

ROUTE	SECTION	COUNTY	TOTAL SHEETS	SHEET NUMBER
VARIOUS	2004-0891	COOK	27	26

CONTRACT NO. 62833

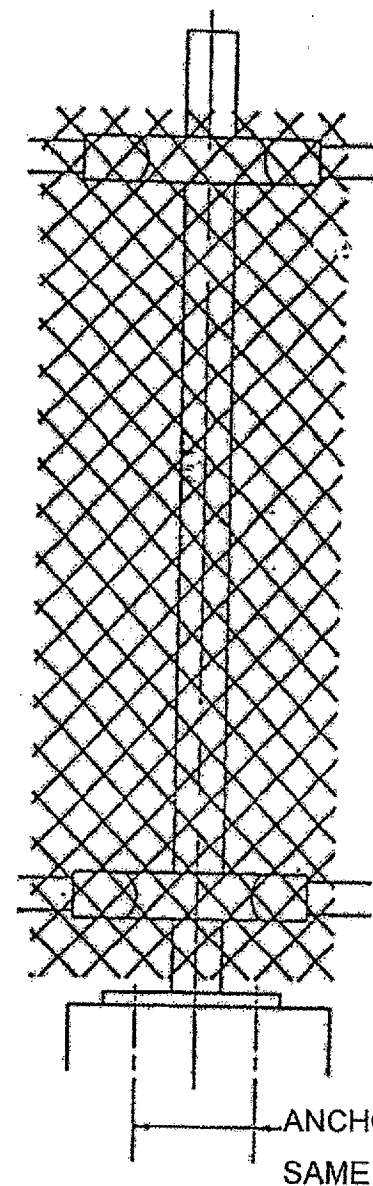


CUT BOLT TO WITHIN 5 (1/4) OF NUT. FURNISH HEX. NUTS AND WASHERS FOR EACH ANCHOR BOLT.

1/2" DIA. ANCHOR BOLTS TO BE DRILLED AND GROUTED, 4 BOLTS PER EACH POST.

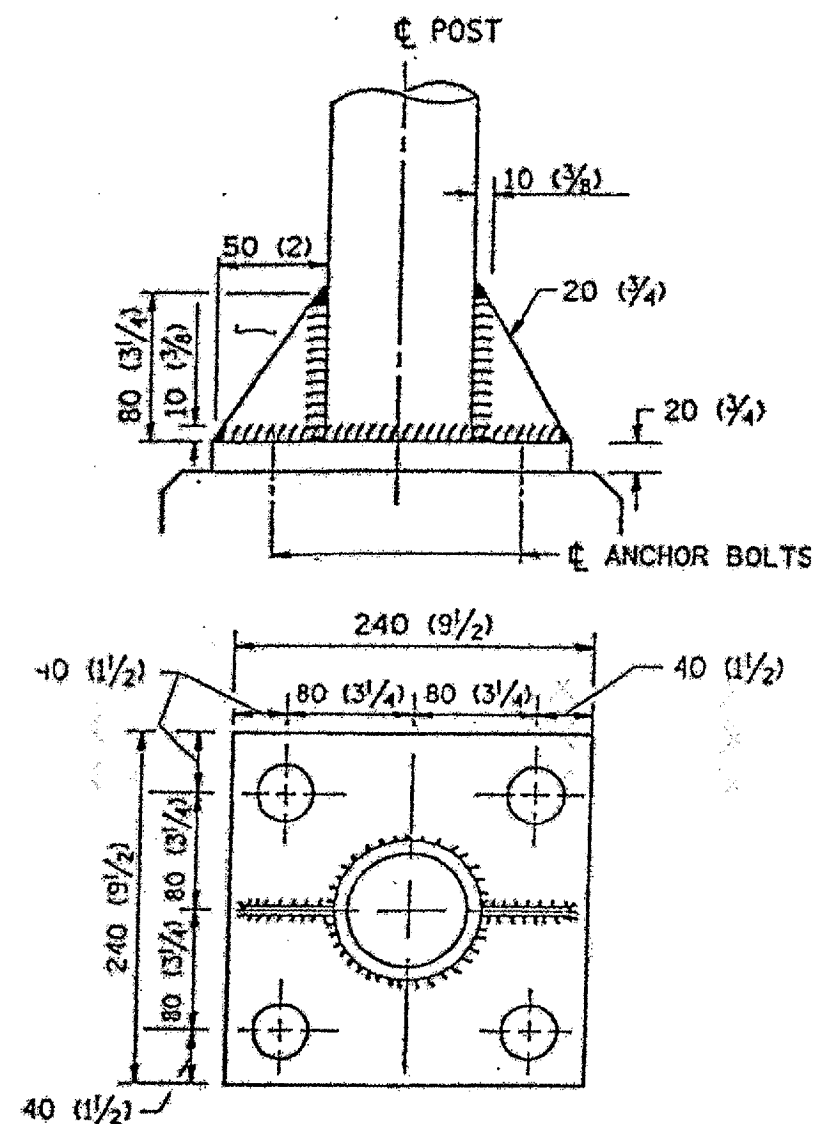
END POST

ALL HARDWARE AND LABOR NECESSARY TO CONSTRUCT AND INSTALL POSTS SHALL BE INCLUDED IN THE COST OF THE CHAIN LINK FENCE TO BE INSTALLED.



ANCHOR BOLT DETAIL
SAME AS END POST

LINE POST

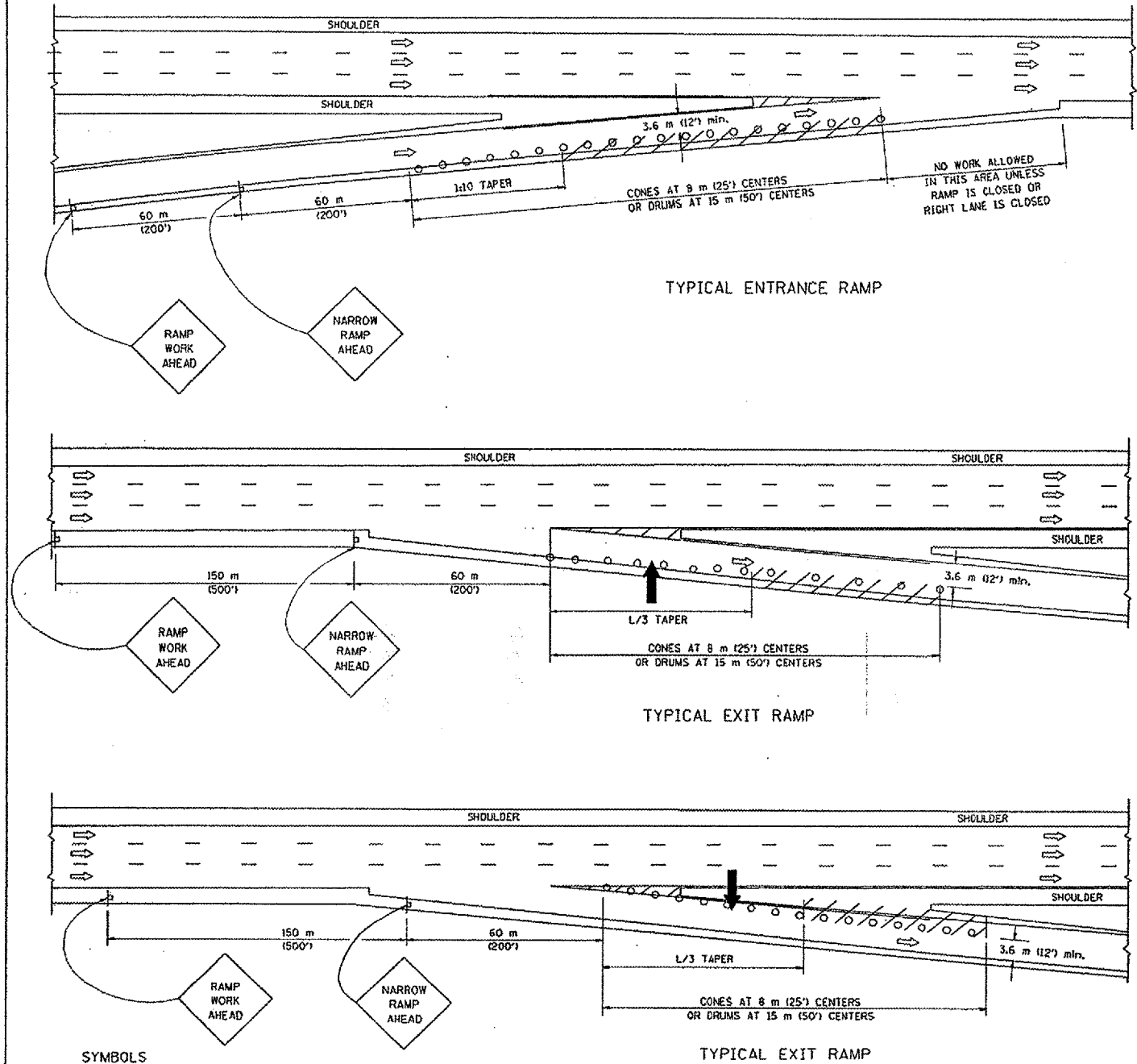


ANCHOR PLATE DETAILS

NOTE:

POST PLATE AND GUSSET ASSEMBLY SHALL BE GALVANIZED AFTER CUTTING, DRILLING, WELDING, AND FABRICATION HAVE BEEN COMPLETED. THE GALVANIZED COATING SHALL CONFORM TO THE REQUIREMENTS OF AASHTO M 120. THE GALVANIZED COATING SHALL NOT BE LESS THAN 610G/SQ M (2.0 OZ./SQ. FT.)

PARTIAL RAMP CLOSURE DETAILS



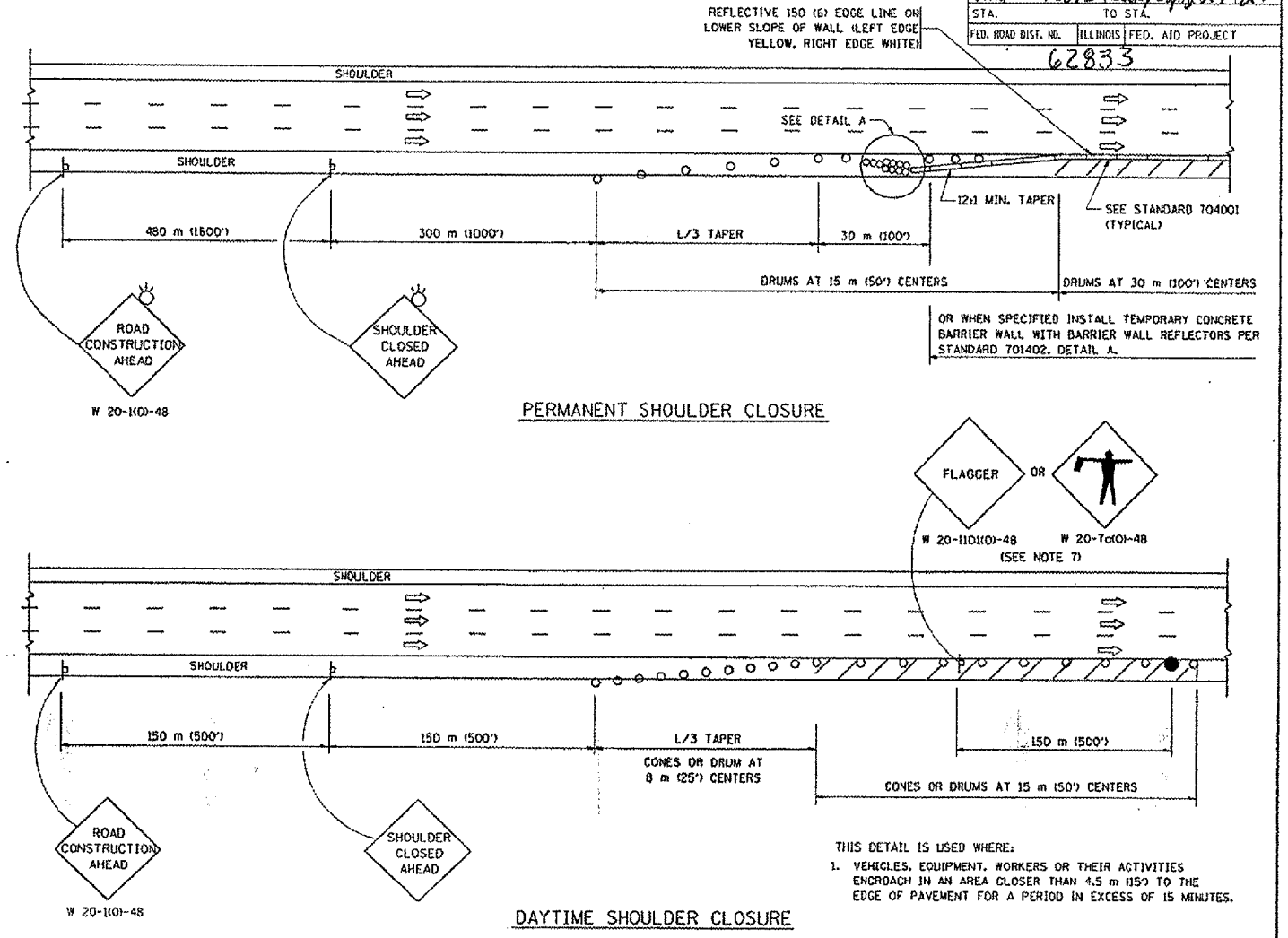
- SYMBOLS**
- ↑ ARROWBOARD
 - ▨ WORK AREA
 - ┆ SIGN ON PORTABLE OR PERMANENT SUPPORT
 - FLAGGER WITH CONTROL SIGN
 - ⊙ DRUM WITH MONO-DIRECTIONAL STEADY BURNING LIGHT
 - CONES - 700 (28) IN HEIGHT

GENERAL NOTES

1. THE "L" DISTANCE EQUALS:

SPEED LIMIT	FORMULAS
80 km/h (45 mph) OR GREATER:	METRIC $L=0.65(W+S)$ ENGLISH $L=TW(S)$
	W = WIDTH OF OFFSET IN METERS (FEET)
	S = NORMAL POSTED SPEED KM/H (MPH)
2. PLASTIC DRUMS WITH HIGH PERFORMANCE REFLECTIVE SHEETING AND STEADY BURNING LIGHTS ARE REQUIRED FOR ALL NIGHTTIME CLOSURES.
3. ALL SIGNS SHALL BE POST MOUNTED IF THE CLOSURE TIME EXCEEDS FOUR DAYS.
4. FLASHING LIGHTS SHALL BE USED DURING THE HOURS OF DARKNESS AND SHALL BE INSTALLED ABOVE THE FIRST TWO SETS OF SIGNS.

SHOULDER CLOSURE DETAILS



F.A. RTE.	SECTION	COUNTY	TOTAL SHEETS	SHEET NO.
VAR 2004-089 I	Cook/Dpp	27	27	
STA.	TO STA.			
FED. ROAD DIST. NO.	ILLINOIS FED. AID PROJECT			

OR WHEN SPECIFIED INSTALL TEMPORARY CONCRETE BARRIER WALL WITH BARRIER WALL REFLECTORS PER STANDARD 701402, DETAIL A.

THIS DETAIL IS USED WHERE:
 1. VEHICLES, EQUIPMENT, WORKERS OR THEIR ACTIVITIES ENCRDACH IN AN AREA CLOSER THAN 4.5 m (15') TO THE EDGE OF PAVEMENT FOR A PERIOD IN EXCESS OF 15 MINUTES.

ARRAY DESIGN PER MANUFACTURER TO BE NCHRP 350 COMPLIANT FOR POSTED SPEED.

DETAIL "A"
 IMPACT ATTENUATOR, TEMPORARY
 (SEE NOTE 5)

5. THE IMPACT ATTENUATOR, TEMPORARY IS NOT REQUIRED WHEN THE TEMPORARY CONCRETE BARRIER WALL IS OUTSIDE THE CLEAR ZONE OR IS TIED INTO THE EXISTING GUARDRAIL. IF OFFSET IS LESS THAN 5 FEET USE "TRAFFIC BARRIER TERMINAL, TYPE III, TEMPORARY" DEVICE TO MEET NCHRP350 FOR POSTED SPEED.
6. AUTHORIZATION FROM THE DISTRICT'S BUREAU OF TRAFFIC IS REQUIRED FOR ALL FREEWAY CLOSURES.
7. THE FLAGGER AND FLAGGER SIGN ARE REQUIRED AT THE ABOVE WORK SITES WHEN:
 - a. FOUR OR MORE WORK VEHICLES ENTER THE TRAFFIC LANES IN A ONE HOUR PERIOD.
 - b. THE WORK ACTIVITY REQUIRES FREQUENT ENCRDACHMENT INTO THE LANE OPEN TO TRAFFIC.
 THE FLAGGER SHALL BE STATIONED APPROXIMATELY 30 m (100') TO 60 m (200') IN ADVANCE OF THE WORKERS.

ALL DIMENSIONS ARE IN MILLIMETERS (INCHES) UNLESS OTHERWISE SHOWN.

ILLINOIS DEPARTMENT OF TRANSPORTATION

TRAFFIC CONTROL DETAILS FOR FREEWAY SHOULDER CLOSURES PARTIAL RAMP CLOSURES

REVISIONS	
NAME	DATE
DWS	11/96
JAF	12/02
NCHRP 350	04/03

SCALE: NONE
 DATE: 05/06/2003
 DRAWN BY: DESIGNED BY: DWS
 CHECKED BY: TC-17