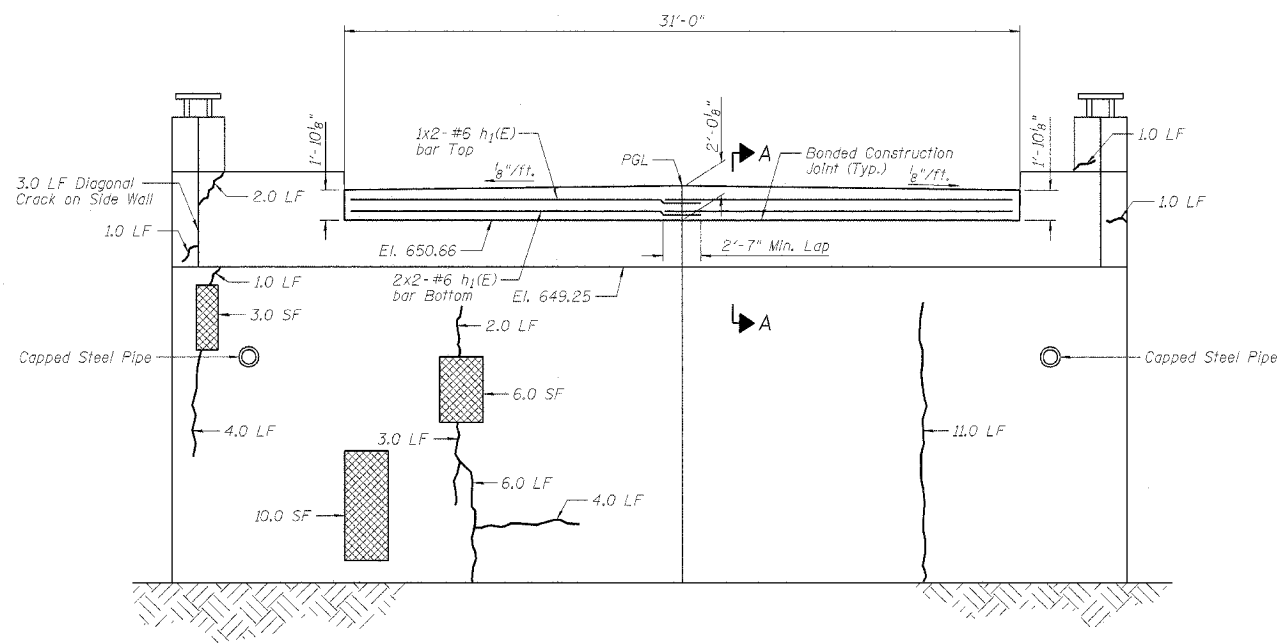


STATE OF ILLINOIS
DEPARTMENT OF TRANSPORTATION

ROUTE NO.	SECTION	COUNTY	TOTAL SHEETS	SHEET	SHEET NO. 5
S.R.L. F.A.P. 305	*	COOK	72	51	7 SHEETS
*2004-108 BR			Contract No. 62853		



NORTH ABUTMENT ELEVATION

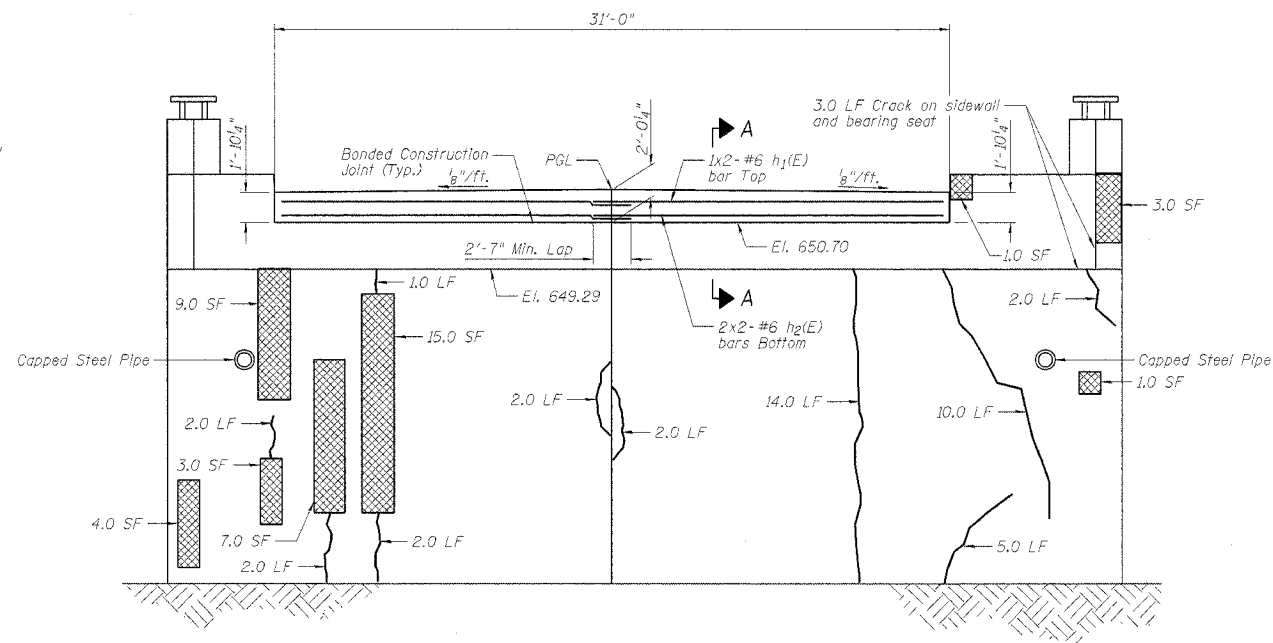
- LEGEND**
- Surveyed Area Requiring Formed Concrete Repair (Depth ≤ 5")
 - Surveyed Length Requiring Epoxy Crack Sealing

NOTES

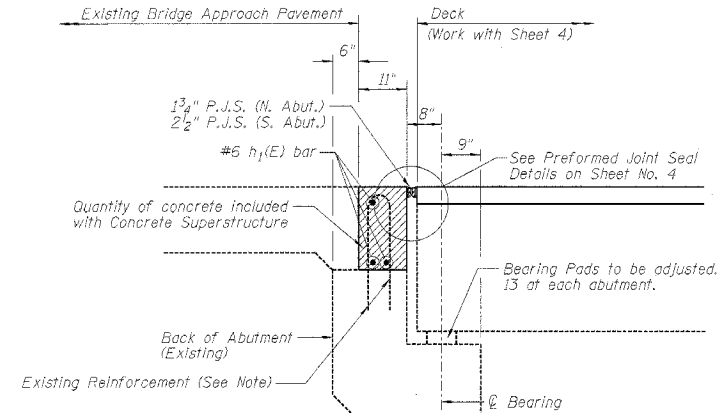
Repair areas shown are the surveyed areas of deterioration. The actual area to be repaired shall be as directed by the Engineer.

Variations in the quantities shall not be cause for additional compensation, however, the Contractor will be paid for the quantity actually furnished at the unit price bid for the work.

Bars indicated thus: 1x2-#6 etc., indicates 1 line of bars with 2 lengths per line.



SOUTH ABUTMENT ELEVATION



SECTION A-A

Existing Reinforcement extending into removed areas shall be blast cleaned, straightened and incorporated into new construction. Cost Included with "Concrete Removal." Any reinforcement bars that are damaged during concrete removal shall be replaced with an approved bar splicer or anchorage system. Cost Included with "Concrete Removal."

BILL OF MATERIAL

Bar	No.	Size	Length	Shape
$h_1(E)$	12	#6	16'-8"	—
Item	Unit	Quantity		
Concrete Superstructure	Cu. Yd.	4.0		
Epoxy Crack Sealing	Foot	120		
Reinforcement Bars, Epoxy Coated	Pound	300		
Formed Concrete Repair (Depth Equal to or Less Than 5")	Sq. Ft.	100		
Formed Concrete Repair (Depth Larger Than 5")	Sq. Ft.	25		

Reinforcement bars designated (E) shall be epoxy coated.
Survey Date: October 1992

BRANCO & ZROKA ENGINEERING, P.C.

DESIGNED	LAS
CHECKED	DAZ
DRAWN	SAW
CHECKED	LAS

February 2005

ABUTMENT REPAIR
EAST FRONTAGE ROAD OVER PALATINE ROAD
FAP 305/PALATINE ROAD
SECTION 2004-108 BR
COOK COUNTY
STA. 0+88.85
STRUCTURE NO. 016-2529