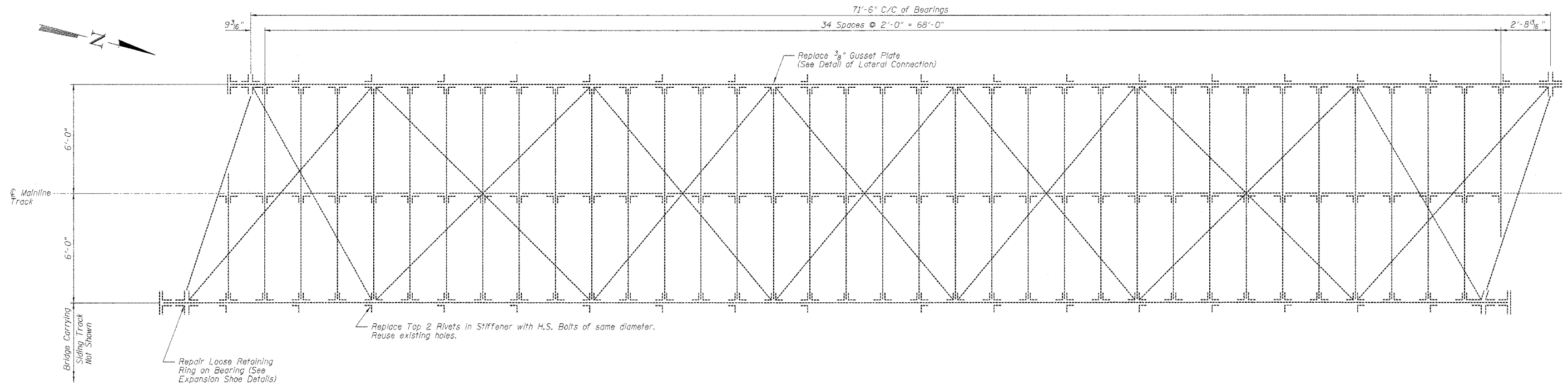


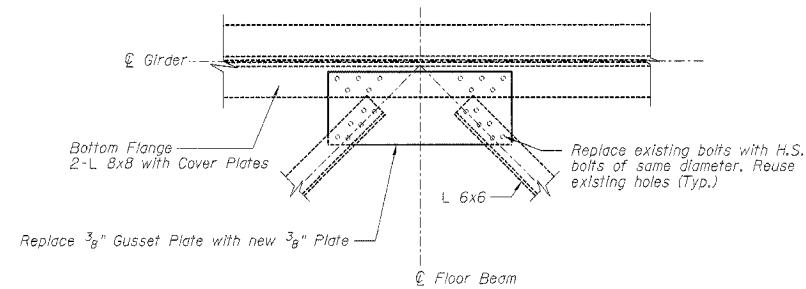
STATE OF ILLINOIS
DEPARTMENT OF TRANSPORTATION

ROUTE NO.	SECTION	COUNTY	TOTAL SHEETS	SHEET NO.	SHEET NO. 3 5 SHEETS
E.A.L. P.A.P. 385	7	COOK	72	56	
*2004-108 BR			CONTRACT NO. 62853		



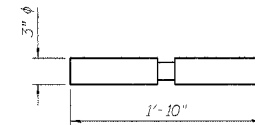
FRAMING PLAN

(Only mainline railroad bridge shown for clarity)

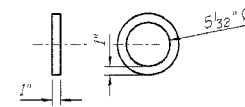


DETAIL OF LATERAL CONNECTION

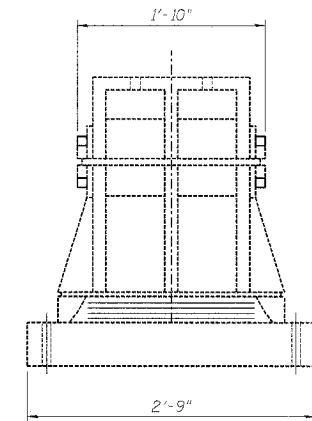
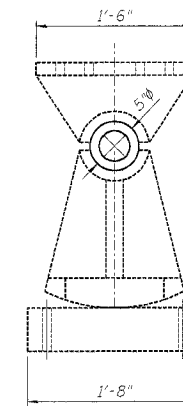
It is the Contractor's responsibility to take measurements in the field of the existing structure wherever new steel is to be replaced or connected into the existing material prior to ordering or fabricating any new steel. Existing connectors are either rivets or bolts, 7/8" φ per existing plans. Where connectors are to be replaced with H.S. bolts, the Contractor shall field verify the connector diameter, gage, and spacing and shall replace the connectors with H.S. bolts of the same diameter. The Contractor shall be responsible for the proper fitting and assembly of all parts of the work.



PIN



RING



EXPANSION SHOE DETAILS

NOTE:

Expansion Shoe details shown for information only. Inside retaining ring on southeast bearing is loose. Approximately 3/4" of the ring is not touching the shoe. Reposition ring back on shoe and weld to top shoe using 4-1/2" long welds (3/16" fillets). Cost included with Structural Steel Repair.

BILL OF MATERIAL

Item	Unit	Quantity
Structural Steel Repair	Pound	100

FRAMING PLAN & BEARING REPAIR DETAILS

WISCONSIN CENTRAL RAILROAD

OVER PALATINE ROAD

FAP 305/PALATINE ROAD

SECTION 2004-108 BR

COOK COUNTY

STA. 421+68.70

STRUCTURE NO. 016-2025

BRANCO & ZROKA ENGINEERING, P.C.

DESIGNED	LAS
CHECKED	DAZ
DRAWN	SAW
CHECKED	LAS

February 2005