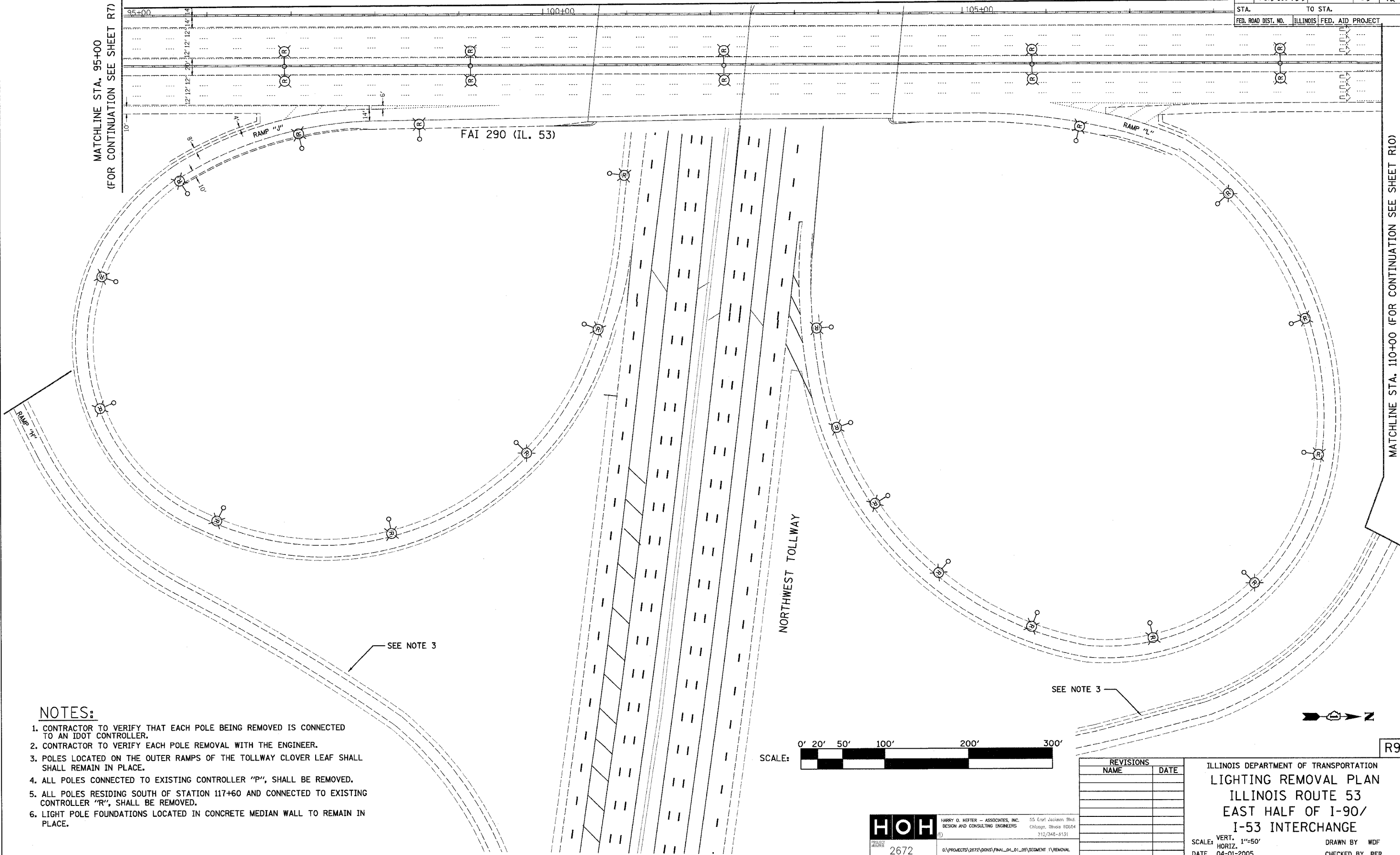


DATE-TIME
USER

CONTRACT NO. 02877

MATCHLINE (FOR CONTINUATION, SEE SHEET R8)

F.A.I. RTE.	SECTION	COUNTY	TOTAL SHEETS	SHEET NO.
290	0305-302K-L-3	COOK	55	12
STA.	TO STA.			
FED. ROAD DIST. NO.	ILLINOIS FED. AID PROJECT			

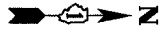
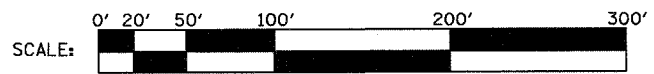


NOTES:

1. CONTRACTOR TO VERIFY THAT EACH POLE BEING REMOVED IS CONNECTED TO AN IDOT CONTROLLER.
2. CONTRACTOR TO VERIFY EACH POLE REMOVAL WITH THE ENGINEER.
3. POLES LOCATED ON THE OUTER RAMPS OF THE TOLLWAY CLOVER LEAF SHALL REMAIN IN PLACE.
4. ALL POLES CONNECTED TO EXISTING CONTROLLER "P", SHALL BE REMOVED.
5. ALL POLES RESIDING SOUTH OF STATION 117+60 AND CONNECTED TO EXISTING CONTROLLER "R", SHALL BE REMOVED.
6. LIGHT POLE FOUNDATIONS LOCATED IN CONCRETE MEDIAN WALL TO REMAIN IN PLACE.

SEE NOTE 3

SEE NOTE 3



PLOT DATE = 4/7/2005
 FILE NAME = #FILE#
 PLOT SCALE = #SCALE#
 REFERENCE = #REF#

HOH HARRY O. HEFFER - ASSOCIATES, INC. 25 East Jackson Blvd.
 DESIGN AND CONSULTING ENGINEERS Chicago, Illinois 60604
 312/345-8131

PROJECT NO. 2672 0:\PROJECTS\0272\00NS\FINAL_04_01_05\SEGMENT 1\REMOVAL

REVISIONS	
NAME	DATE

ILLINOIS DEPARTMENT OF TRANSPORTATION
LIGHTING REMOVAL PLAN
 ILLINOIS ROUTE 53
 EAST HALF OF I-90/
 I-53 INTERCHANGE

SCALE: VERT. 1"=50'
 HORIZ. 1"=100'

DATE 04-01-2005

DRAWN BY WDF
 CHECKED BY RER

R9