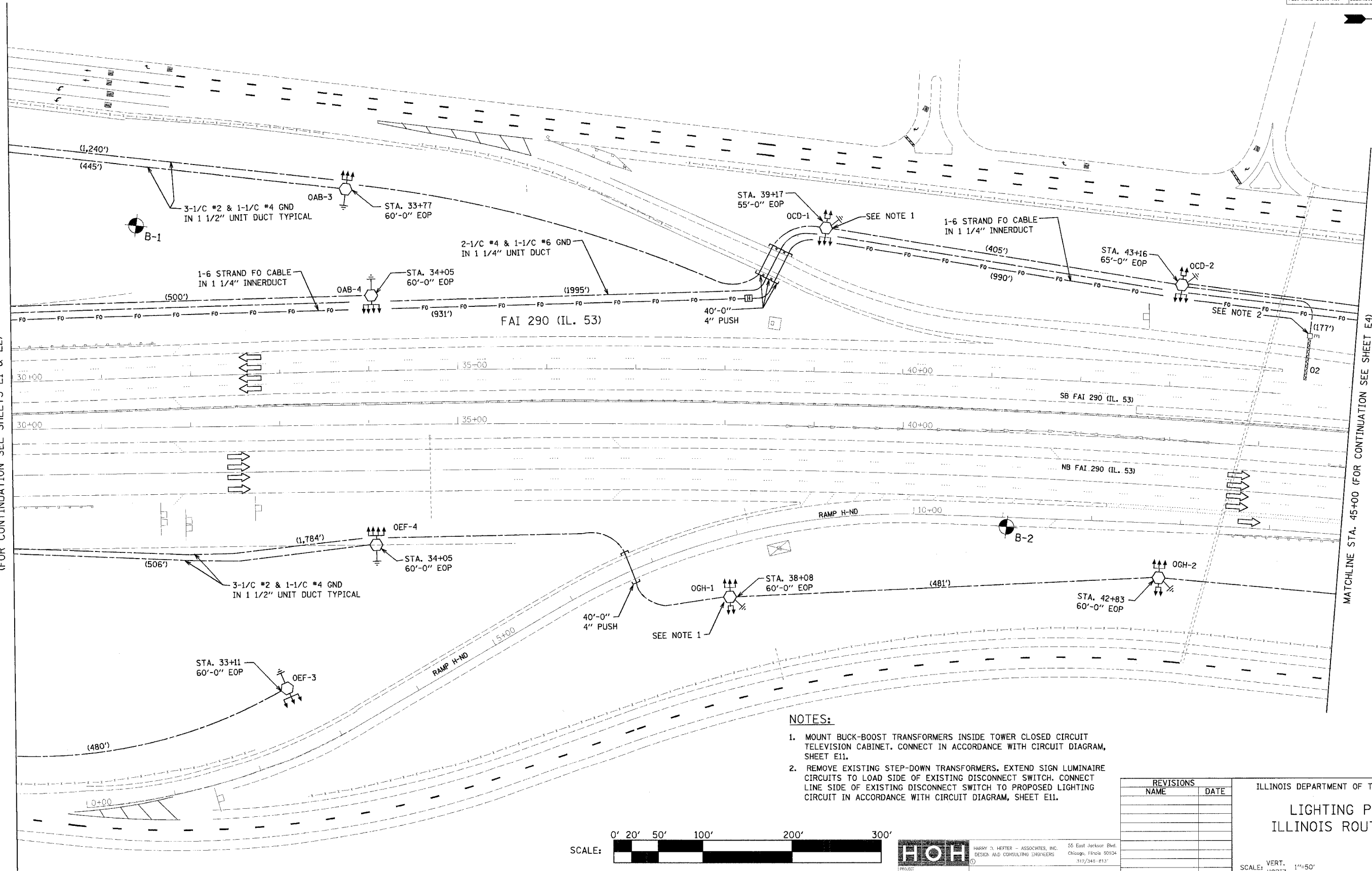


|                     |                           |        |              |           |
|---------------------|---------------------------|--------|--------------|-----------|
| F.A.I. RTE.         | SECTION                   | COUNTY | TOTAL SHEETS | SHEET NO. |
| 290                 | 0305-302K-L3              | COOK   | 55           | 16        |
| STA.                | TO STA.                   |        |              |           |
| FED. ROAD DIST. NO. | ILLINOIS FED. AID PROJECT |        |              |           |



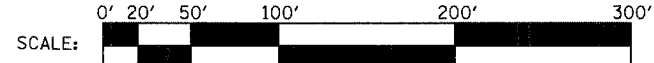
MATCHLINE STA. 30+00  
(FOR CONTINUATION SEE SHEETS E1 & E2)

MATCHLINE STA. 45+00 (FOR CONTINUATION SEE SHEET E4)



**NOTES:**

1. MOUNT BUCK-BOOST TRANSFORMERS INSIDE TOWER CLOSED CIRCUIT TELEVISION CABINET. CONNECT IN ACCORDANCE WITH CIRCUIT DIAGRAM, SHEET E11.
2. REMOVE EXISTING STEP-DOWN TRANSFORMERS. EXTEND SIGN LUMINAIRE CIRCUITS TO LOAD SIDE OF EXISTING DISCONNECT SWITCH. CONNECT LINE SIDE OF EXISTING DISCONNECT SWITCH TO PROPOSED LIGHTING CIRCUIT IN ACCORDANCE WITH CIRCUIT DIAGRAM, SHEET E11.



**HOH** HARRY O. HEFFER - ASSOCIATES, INC.  
DESIGN AND CONSULTING ENGINEERS  
55 East Jackson Blvd.  
Chicago, Illinois 60604  
312/344-8131

PROJECT NUMBER: 2672  
C:\PROJECTS\2072\2072\FINAL\_04\_01\_05\2072\111106.PDW

| REVISIONS |      |
|-----------|------|
| NAME      | DATE |
|           |      |
|           |      |
|           |      |
|           |      |

ILLINOIS DEPARTMENT OF TRANSPORTATION

**LIGHTING PLAN**  
ILLINOIS ROUTE 53

SCALE: VERT. 1"=50'  
HORIZ. 1"=50'

DATE: 02-28-2005

DRAWN BY: MEK  
CHECKED BY: RER

PLOT DATE = 04/08/2005  
FILE NAME = FILE16  
PLOT SCALE = SCALE  
REFERENCE = REF1