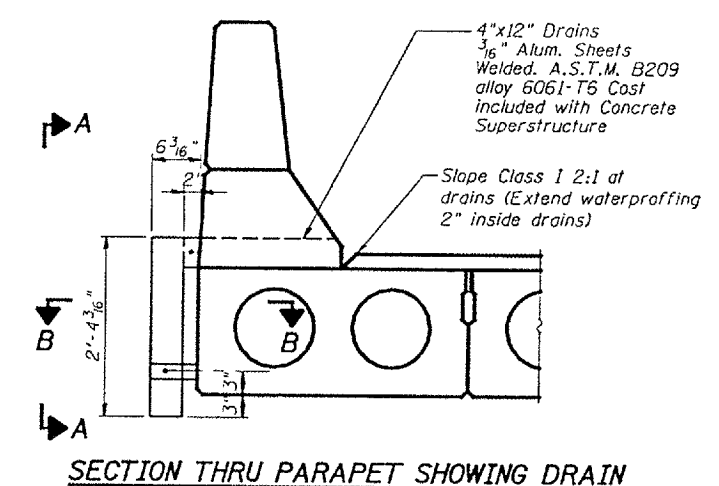
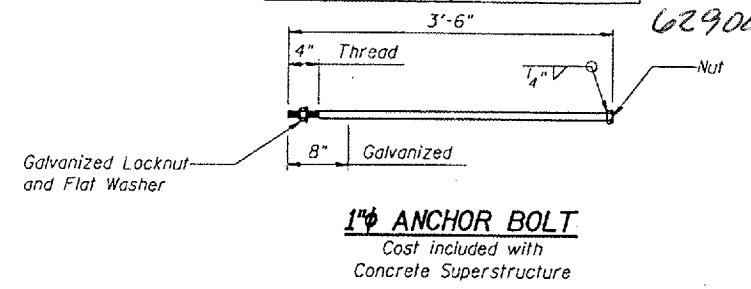
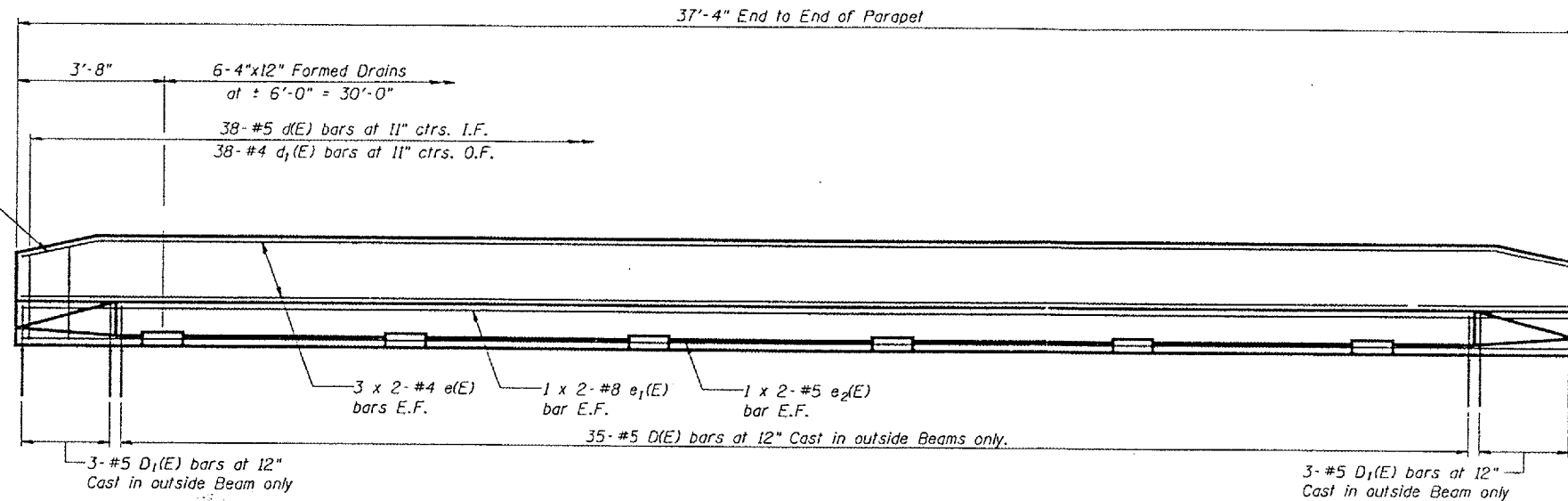
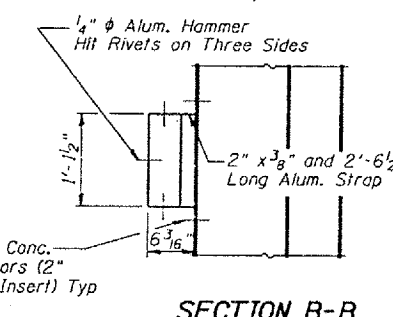


STATE OF ILLINOIS
DEPARTMENT OF TRANSPORTATION

ROUTE NO.	SECTION	COUNTY	DATE	POST	SHEET NO. 3 3 SHEETS
FAP 330	2004-1201	Will	14	13	
FED. ROAD DIST. NO. 7					

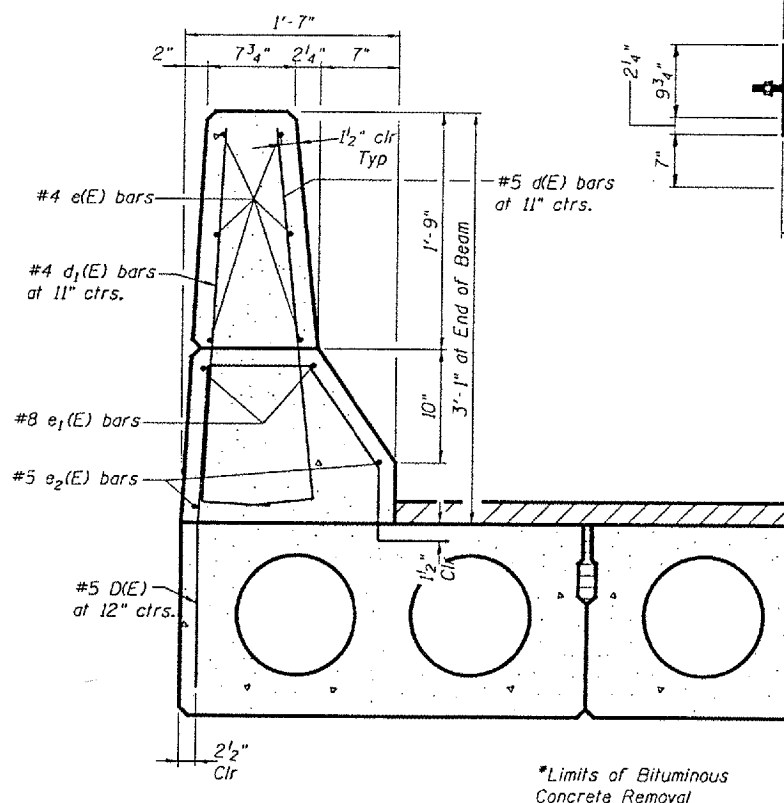


PARAPET ELEVATION

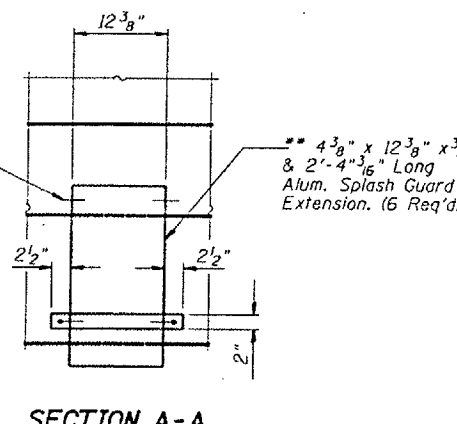


SECTION B-B

PARAPET END DETAILS



SECTION THRU PARAPET



SECTION A-A

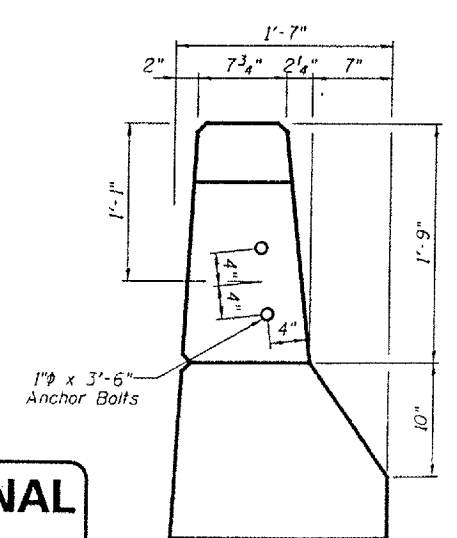
BILL OF MATERIAL

Bar	No.	Size	Length	Shape
d(E)	76	#5	3'-4"	U
d1(E)	76	#4	3'-4"	U
e(E)	24	#4	19'-6"	—
e1(E)	8	#8	20'-11"	—
e2(E)	8	#5	19'-9"	—
Reinforcement Bars Epoxy Coated		Pound		1360
Concrete Superstructure		Cu. Yd.		8.5
Concrete Removal		Cu. Yd.		8.5

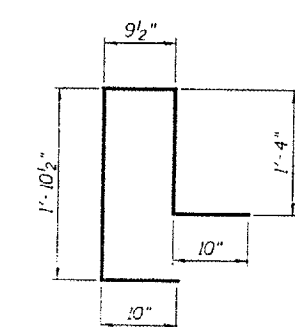
All Bars Designated (E) Shall be Epoxy Coated.

Min. Bar Laps

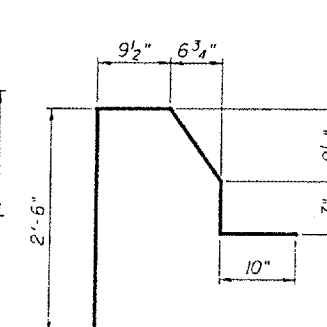
- #4 = 1'-8"
- #5 = 2'-2"
- #8 = 4'-6"



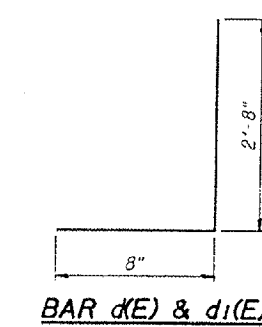
PARAPET END VIEW



BAR D1(E)



BAR D(E)



BAR d(E) & d1(E)

PARAPET DETAILS
F.A. RT. 124
WILL COUNTY
SN.099-0119

DESIGNED	V.H.V.
CHECKED	M.A.C.
DRAWN	Drew Christopher
CHECKED	V.H.V., M.A.C.

FINAL DATE	SIG
EXAMINED	ENGINEER OF STRUCTURAL SERVICES
PASSED	ENGINEER OF BRIDGES AND STRUCTURES

2nd PRE-FINAL
DATE: 04/22/2004