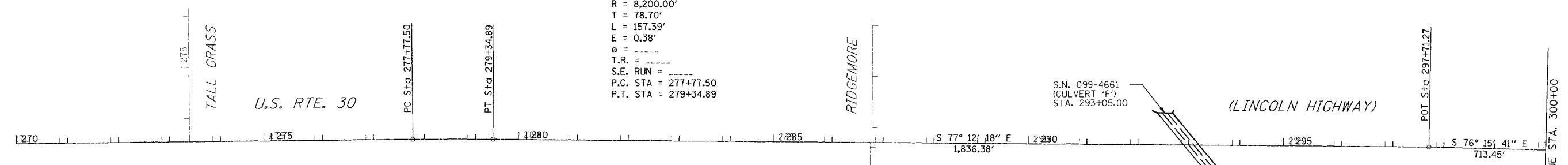


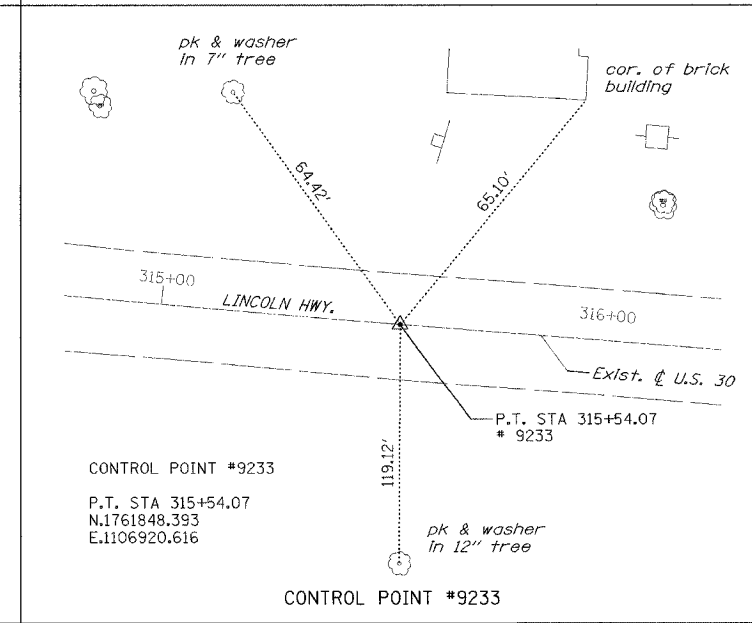
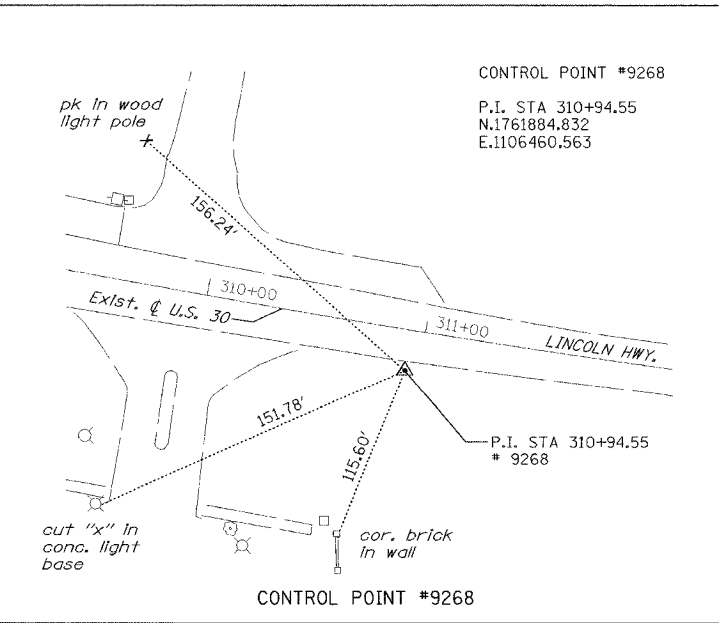
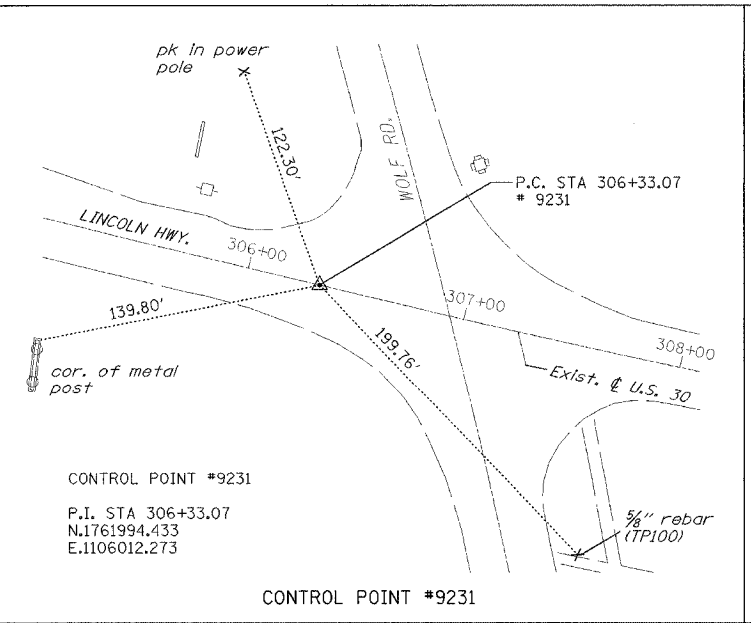
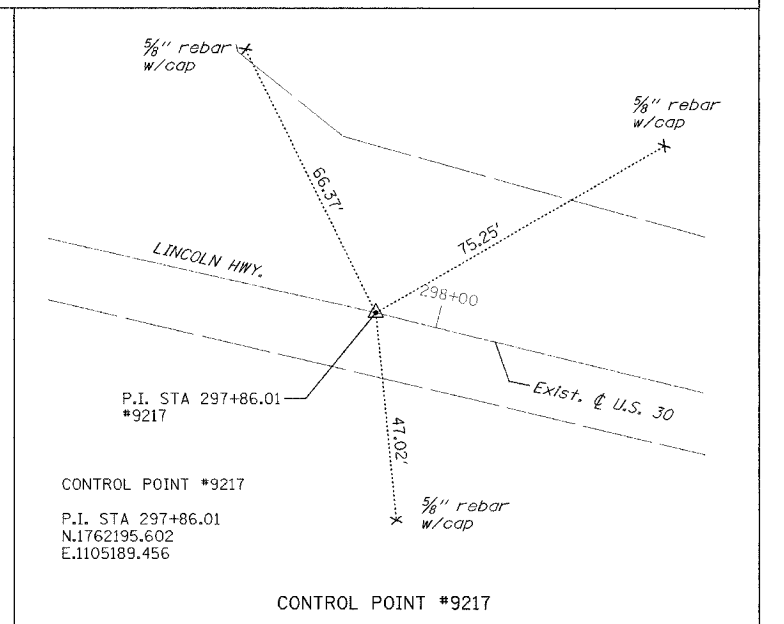
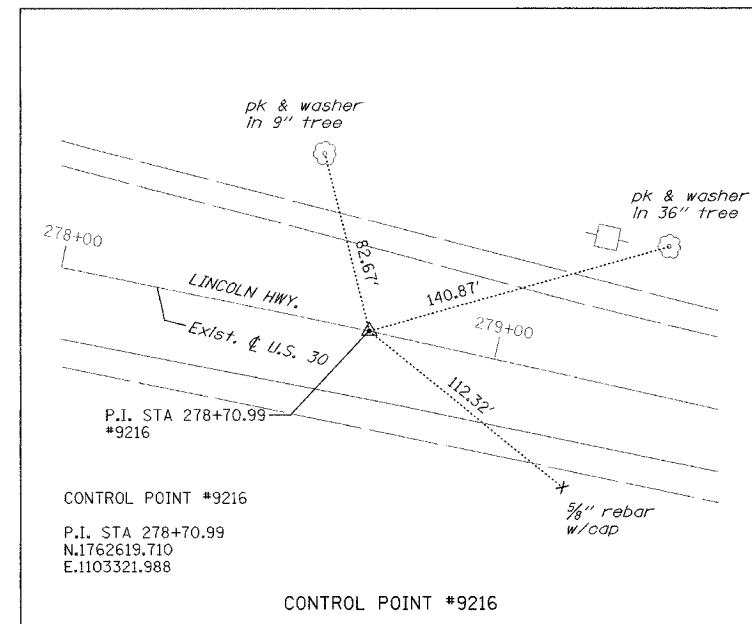
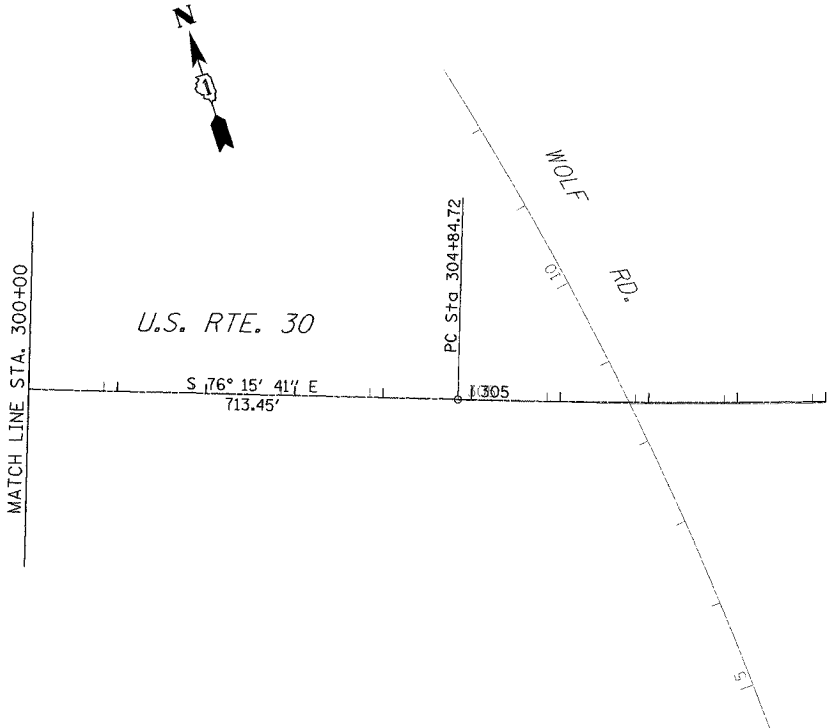
F.A.P. RTE.	SECTION	COUNTY	TOTAL SHEETS	SHEET NO.
353	(12&13)T-1	WILL	53	6
STA.	TO STA.			

PROP. CURVE CLUS30-4
 PI STA. = 278+56.20
 $\Delta = 1^\circ 05' 59''$ (RT)
 $D = 0^\circ 41' 55''$
 $R = 8,200.00'$
 $T = 78.70'$
 $L = 157.39'$
 $E = 0.38'$
 $e = \text{---}$
 $T.R. = \text{---}$
 $S.E. RUN = \text{---}$
 P.C. STA = 277+77.50
 P.T. STA = 279+34.89



BENCHMARK DESCRIPTIONS

- BM #223 ELEVATION 699.632**
MAG NAIL ON THE WESTMOST WOODEN GUARD RAIL POST APPROXIMATELY 300' WEST OF TALL GRASS PARKWAY ON THE SOUTH SIDE OF RTE. 30. STA. 270+15, 25' LT.
- TBM #224 ELEVATION 715.371**
CHISELED "4" ON THE NW FLANGE BOLT OF THE FIRST FIRE HYDRANT EAST OF TALL GRASS DRIVE ON THE NORTH SIDE OF RTE. 30. STA. 276+68, 47' LT.
- TBM #225 ELEVATION 715.525**
NAIL IN THE SOUTH FACE OF THE THIRD POWER POLE WEST OF 116TH AVENUE ON THE NORTH SIDE OF RTE. 30. STA. 282+43, 33' LT.
- TBM #226 ELEVATION 710.678**
 $\frac{5}{8}$ " DIAMETER IRON ROD AT THE EDGE OF SW STONE SHOULDER OF RTE. 30 APPROXIMATELY 100' EAST OF THE CENTERLINE OF 116TH AVENUE. STA. 287+88, 25' RT.
- TBM #227 ELEVATION 712.798**
NAIL IN THE SOUTH FACE OF THE FIFTH POWER POLE EAST OF 116TH AVENUE ON THE NORTH SIDE OF RTE. 30. STA. 293+79, 70' LT.
- BM #228 ELEVATION 721.583**
RAILROAD SPIKE IN THE SOUTH FACE OF THE FIFTH NEW POWER POLE WEST OF WOLF ROAD ON THE NORTH SIDE OF RTE. 30. STA. 300+79, 71' LT.
- TBM #229 ELEVATION 727.761**
NAIL IN THE NORTH FACE OF THE POWER POLE ON THE SW CORNER OF WOLF ROAD AND RTE. 30. STA. 306+32, 36' RT.



U.S. RTE. 30 COORDINATE DATA

POINT	NORTHING	EASTING
P.C. 277+77.50	1,762,635.68	1,103,244.88
P.T. 279+34.89	1,762,602.30	1,103,398.69
POT 297+71.27	1,762,195.60	1,105,189.47
P.C. 304+84.72	1,762,026.16	1,105,882.51
POT 306+77.94	1,761,982.00	1,106,070.61

REVISIONS		ILLINOIS DEPARTMENT OF TRANSPORTATION U.S. RTE. 30 OVER STREAM 0.3 MI. W. OF WOLF RD. ALIGNMENT, TIES & BENCHMARKS STA. 235+00 TO STA. 295+00 SCALE : 1" = 100' DATE : 06/17/05
NAME	DATE	
		DRAWN BY : BAE CHECKED BY : GB