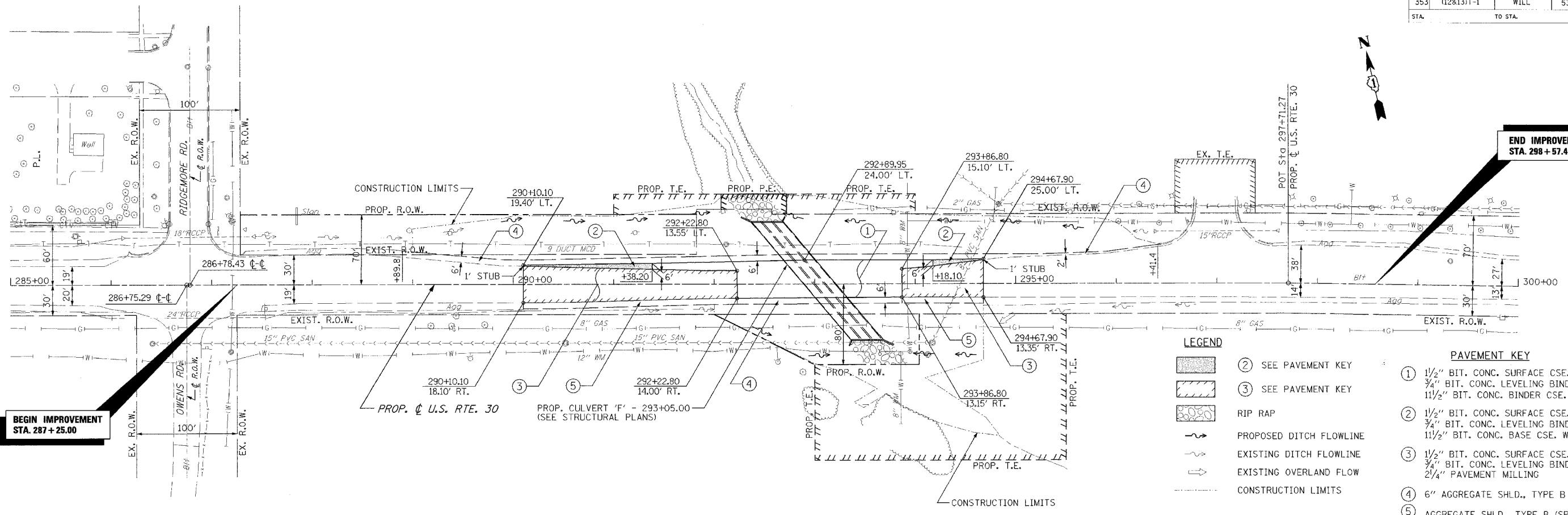
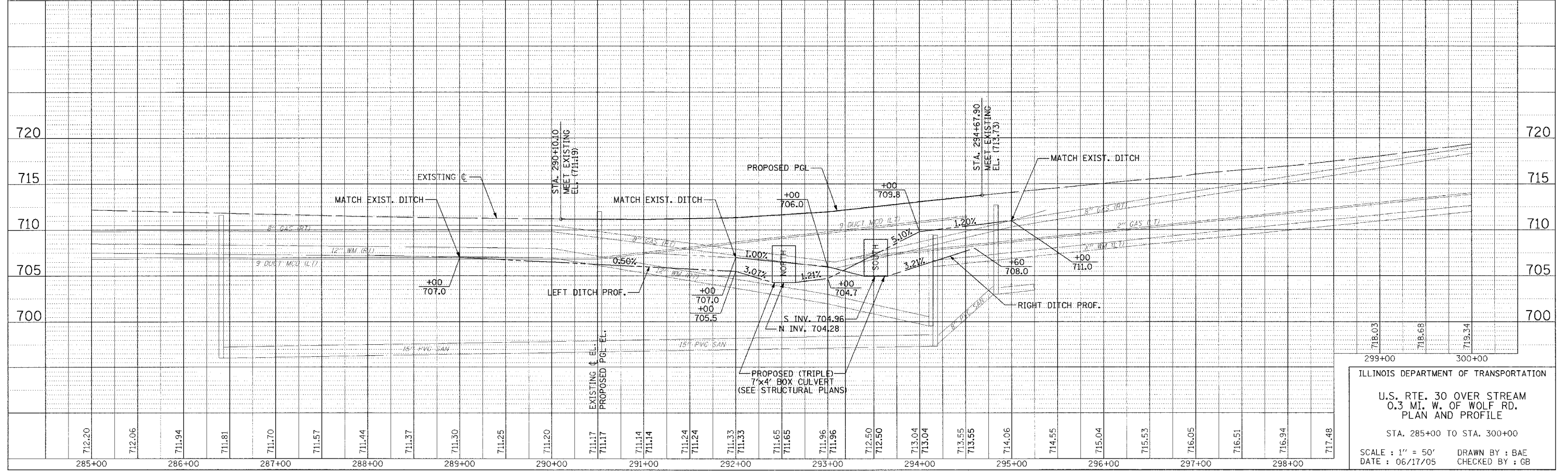


F.A.P. RTE.	SECTION	COUNTY	TOTAL SHEETS	SHEET NO.
353	(12&13)T-1	WILL	53	8
STA.	TO STA.			



- LEGEND**
- ① SEE PAVEMENT KEY
 - ② SEE PAVEMENT KEY
 - ③ SEE PAVEMENT KEY
 - RIP RAP
 - PROPOSED DITCH FLOWLINE
 - EXISTING DITCH FLOWLINE
 - EXISTING OVERLAND FLOW
 - CONSTRUCTION LIMITS
- PAVEMENT KEY**
- ① 1/2" BIT. CONC. SURFACE CSE.
3/4" BIT. CONC. LEVELING BINDER
1 1/2" BIT. CONC. BINDER CSE.
 - ② 1/2" BIT. CONC. SURFACE CSE.
3/4" BIT. CONC. LEVELING BINDER
1 1/2" BIT. CONC. BASE CSE. WIDENING
 - ③ 1/2" BIT. CONC. SURFACE CSE.
3/4" BIT. CONC. LEVELING BINDER
2 1/4" PAVEMENT MILLING
 - ④ 6" AGGREGATE SHLD., TYPE B
 - ⑤ AGGREGATE SHLD., TYPE B (SPECIAL)



ILLINOIS DEPARTMENT OF TRANSPORTATION

**U.S. RTE. 30 OVER STREAM
0.3 MI. W. OF WOLF RD.
PLAN AND PROFILE**

STA. 285+00 TO STA. 300+00

SCALE : 1" = 50'
DATE : 06/17/05

DRAWN BY : BAE
CHECKED BY : GB