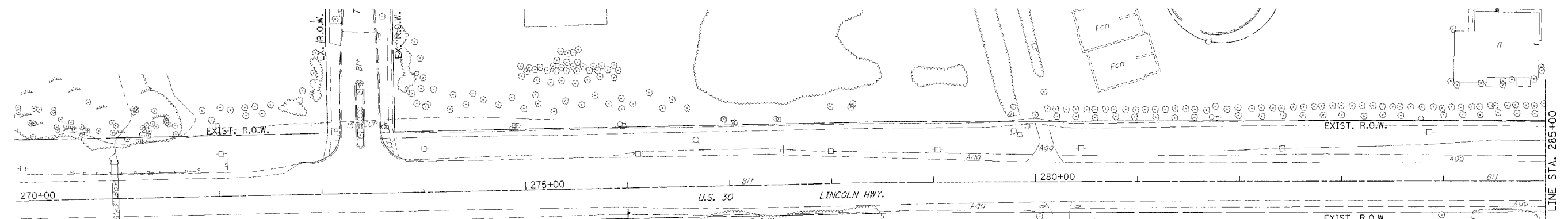
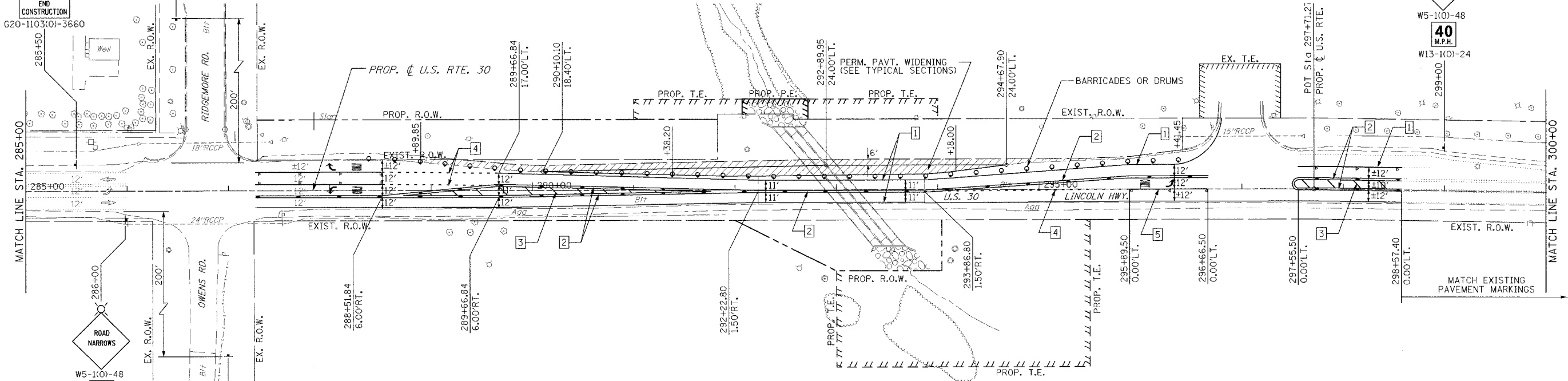
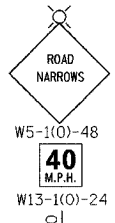
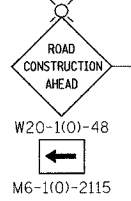


F.A.P. RTE.	SECTION	COUNTY	TOTAL SHEETS	SHEET NO.
353	(12&13)T-1	WILL	53	17
STA.	TO STA.			



- SYMBOLS**
- CONSTRUCTION ZONE
  - TEMPORARY CONCRETE BARRIER WALL
  - IMPACT ATTENUATOR
  - VERTICAL PANELS AT 50'
  - TYPE III BARRICADE
  - BARRICADES OR DRUMS WITH MONODIRECTIONAL STEADY BURNING LIGHT
    - 50' c-c STRAIGHTS
    - 25' c-c TAPERS
    - 12' c-c RADIUS



**PAVEMENT MARKING KEY**

- 1 4" SOLID - WHITE
- 2 4" SOLID - (2) YELLOW @ 11"
- 3 12" SOLID - YELLOW @ 45° / 75° c-c
- 4 6" - WHITE 2' DASH/6' SKIP
- 5 6" SOLID - WHITE

**PAVEMENT MARKING LEGEND**

- ▶ RAISED PAVEMENT MARKER (RPM), ONE-WAY CRYSTAL
- ◆ RAISED PAVEMENT MARKER (RPM), TWO-WAY AMBER

REVISIONS	
NAME	DATE

ILLINOIS DEPARTMENT OF TRANSPORTATION  
 U.S. RTE. 30 OVER STREAM  
 0.3 MI. W. OF WOLF RD.  
 SUGGESTED STAGES OF CONSTRUCTION  
 AND TRAFFIC CONTROL  
 STA. 270+00 TO STA. 300+00  
 SCALE : 1" = 50' DRAWN BY : BAE  
 DATE : 06/17/05 CHECKED BY : GB