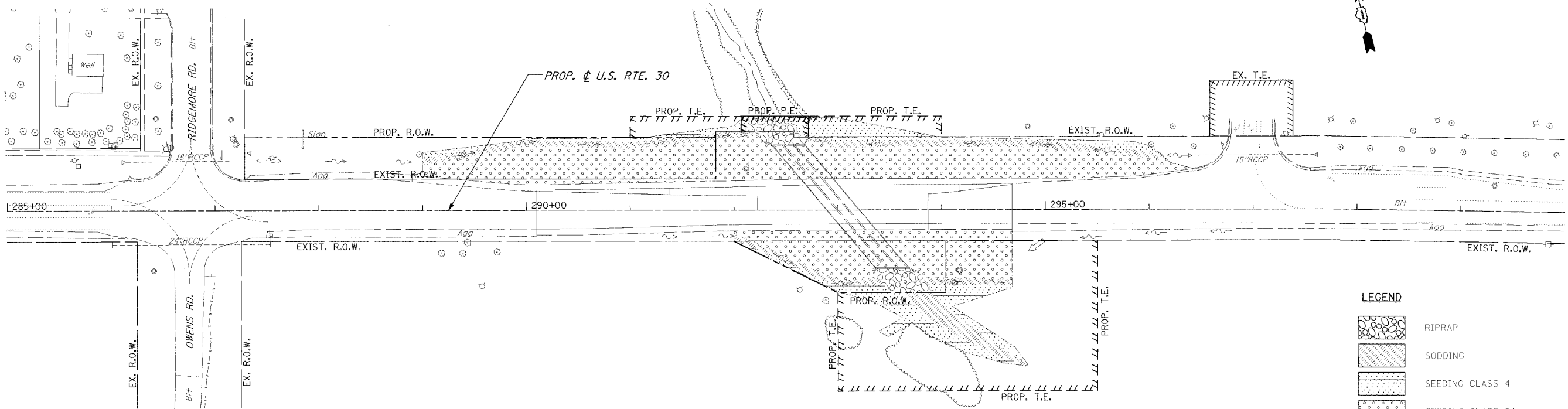


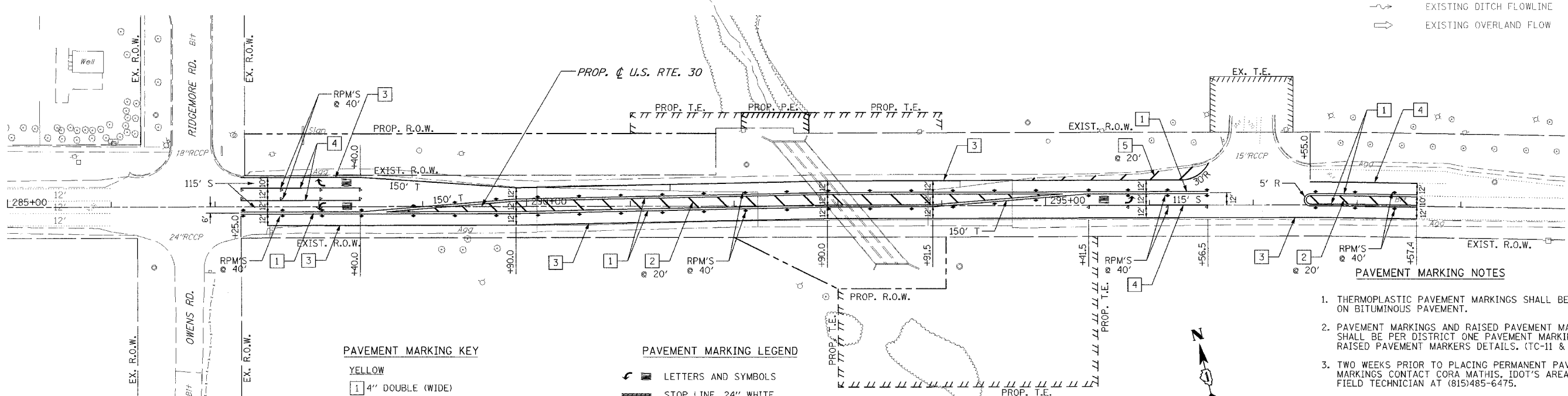
F.A.P. RTE.	SECTION	COUNTY	TOTAL SHEETS	SHEET NO.
353	(12&13)T-1	WILL	53	20
STA.	TO STA.			

NOTE:
EROSION CONTROL BLANKET SHALL BE USED WITH ALL SEEDING AND SODDING OPERATIONS.



LEGEND

- RIPRAP
- SODDING
- SEEDING CLASS 4
- SEEDING CLASS 2A
- CLEARING AND GRADING LIMITS
- PROPOSED DITCH FLOWLINE
- EXISTING DITCH FLOWLINE
- EXISTING OVERLAND FLOW



PAVEMENT MARKING KEY

- YELLOW**
- 1 4" DOUBLE (WIDE)
 - 2 12" DIAGONALS @ 45°
- WHITE**
- 3 4" SOLID
 - 4 6" SOLID
 - 5 12" DIAGONALS @ 45°

PAVEMENT MARKING LEGEND

- LETTERS AND SYMBOLS
- STOP LINE, 24" WHITE
- RAISED PAVEMENT MARKER (RPM), ONE-WAY CRYSTAL
- RAISED PAVEMENT MARKER (RPM), ONE-WAY AMBER
- RAISED PAVEMENT MARKER (RPM), TWO-WAY AMBER
- 240' T LENGTH OF TAPER
- 205' S LENGTH OF STORAGE

PAVEMENT MARKING NOTES

1. THERMOPLASTIC PAVEMENT MARKINGS SHALL BE APPLIED ON BITUMINOUS PAVEMENT.
2. PAVEMENT MARKINGS AND RAISED PAVEMENT MARKERS SHALL BE PER DISTRICT ONE PAVEMENT MARKING AND RAISED PAVEMENT MARKERS DETAILS. (TC-11 & TC-13)
3. TWO WEEKS PRIOR TO PLACING PERMANENT PAVEMENT MARKINGS CONTACT CORA MATHIS, IDOT'S AREA TRAFFIC FIELD TECHNICIAN AT (815)485-6475.

REVISIONS	
NAME	DATE

ILLINOIS DEPARTMENT OF TRANSPORTATION
 U.S. RTE. 30 OVER STREAM
 0.3 MI. W. OF WOLF RD.
 LANDSCAPING &
 PAVEMENT MARKING PLANS
 STA. 270+00 TO STA. 300+00
 SCALE : 1" = 50'
 DATE : 06/17/05
 DRAWN BY : BAE
 CHECKED BY : GB