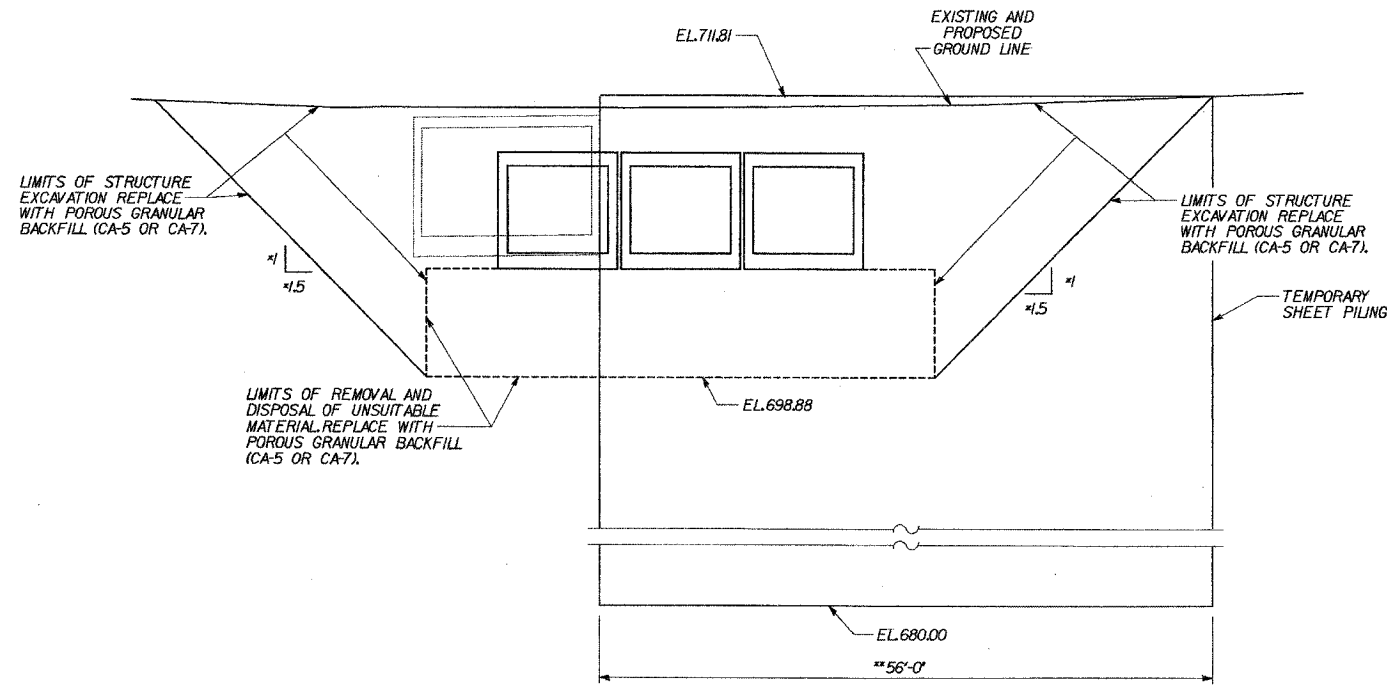


ROUTE NO. SECTION		COUNTY	TOTAL SHEETS	SHEET NO.
FAP 353 *		WILL	53	23

* SBC7.02 & 10 T-1



STAGE I TEMPORARY SHEET PILING

(LOOKING SOUTH)
* DENOTES PERPENDICULAR TO ϕ OF CULVERT
** MEASURED ALONG ϕ OF PILING

**PROPOSED
TEMPORARY SHEET PILING DATA**

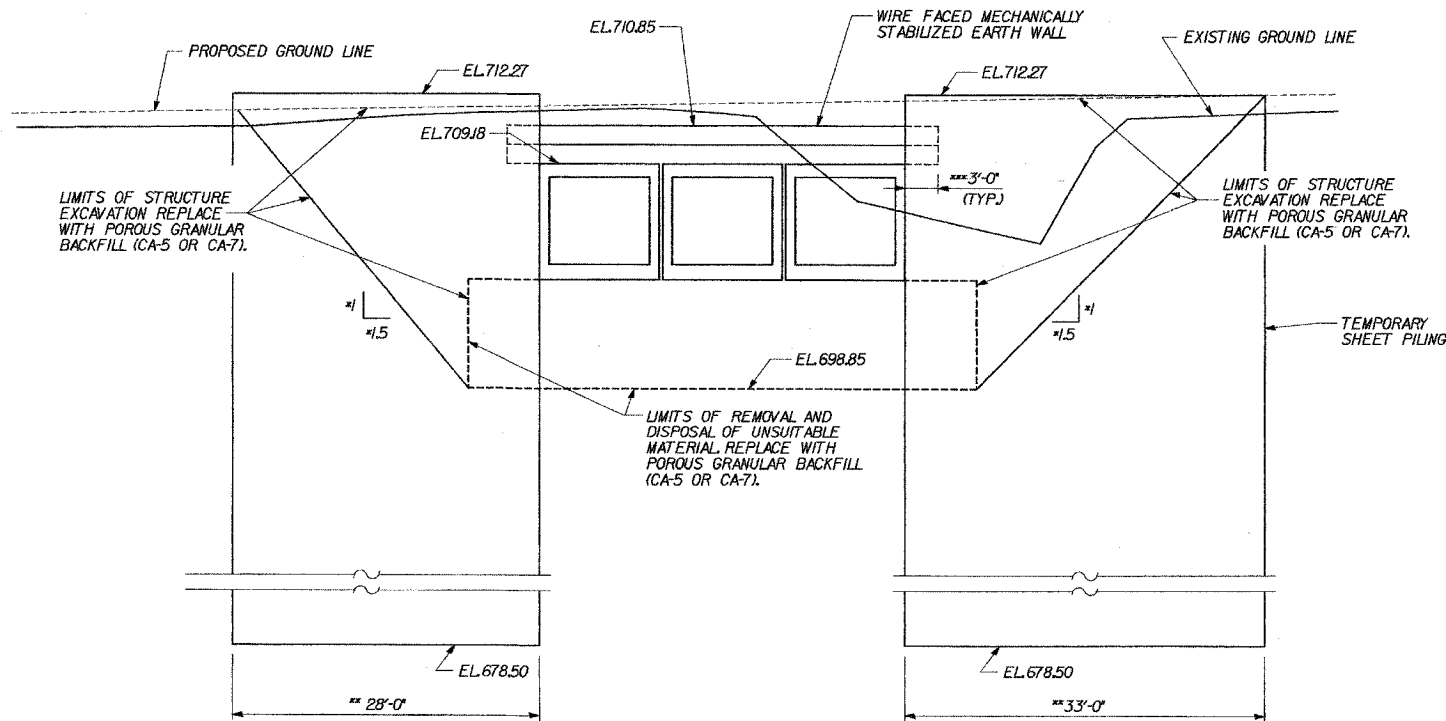
STAGE I

TOP ELEV. 711.81
BOTTOM ELEV. 680.00
EMBEDMENT - 18'-5"
MIN. SECTION MODULUS - 26.8 IN³/FT
LENGTH - 56'-0" (W. SIDE)

STAGE II

TOP ELEV. 712.27
BOTTOM ELEV. 678.50
EMBEDMENT - 20'-2"
MIN. SECTION MODULUS - 32.0 IN³/FT
LENGTH - 33'-0" (E. SIDE) 28'-0" (W. SIDE)

IF CONTRACTOR CHOOSES TO ALTER THE TEMPORARY CANTILEVERED SHEET PILING DESIGN REQUIREMENTS SHOWN ON THE PLANS FOR LESSER DESIGN REQUIREMENTS, THEN FULL DESIGN SUBMITTALS WITH THE REQUIRED SEALS WILL BE EXPECTED BY THE DEPARTMENT, FOR REVIEW AND APPROVAL.



STAGE II TEMPORARY SHEET PILING

(LOOKING NORTH)
* DENOTES PERPENDICULAR TO ϕ OF CULVERT
** MEASURED ALONG ϕ OF PILING
*** MEASURED PARALLEL TO ϕ OF ROADWAY

c:\Dept\Structures\8050002-IL-US80\CULVERT\ SUPPLEMENT\08-shpiling.dgn

15-Jul-2005 09:50

DESIGNED	ASP
CHECKED	CDS
DRAWN	BEM
CHECKED	ASP

REVISIONS	
NAME	DATE

**U.S. 30 OVER STREAM
0.3 MILES W. OF WOLF RD.
TEMPORARY SHEET PILING**
U.S. ROUTE 30 (LINCOLN HIGHWAY)
F.A.P. 353 (U.S. 30)
SECTION (12 & 13) T-1
STATION 293+05.00
WILL COUNTY
STRUCTURE NUMBER 099-4661