

F.A.U. RTE.	SECTION	COUNTY	TOTAL SHEETS	SHEET NO.
3902	2005-003 TS	KANE	20	1

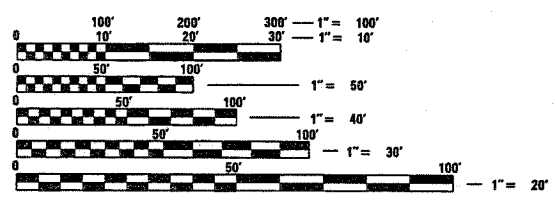
D-91-111-05

INDEX OF SHEETS

1. TITLE SHEET
- 2-3. SUMMARY OF QUANTITIES
- 4-7. DISTRICT 1 STANDARD TRAFFIC SIGNAL DETAILS
8. IL. 31 (LINCOLN WAY) AT IL. 56 (STATE ST.) TRAFFIC SIGNAL MODERNIZATION PLAN
9. IL. 31 (LINCOLN WAY) AT IL. 56 (STATE ST.)
 - CABLE PLAN
 - PHASE DESIGNATION DIAGRAM
 - SCHEDULE OF QUANTITIES
10. IL. 31 (LINCOLN WAY) AT AIRPORT RD. TRAFFIC SIGNAL MODERNIZATION PLAN
11. IL. 31 (LINCOLN WAY) AT AIRPORT RD.
 - CABLE PLAN
 - PHASE DESIGNATION DIAGRAM
 - SCHEDULE OF QUANTITIES
12. IL. 31 (LINCOLN WAY) AT AIRPORT RD. TEMPORARY/REMOVAL TRAFFIC PLAN
13. IL. 31 (LINCOLN WAY) AT AIRPORT RD.
 - TEMPORARY CABLE PLAN
 - PHASE DESIGNATION DIAGRAM
 - SCHEDULE OF QUANTITIES
14. IL. 31 (LINCOLN WAY) AT I-88 RAMP TRAFFIC SIGNAL MODERNIZATION PLAN
15. IL. 31 (LINCOLN WAY) AT I-88 RAMP
 - CABLE PLAN
 - PHASE DESIGNATION DIAGRAM
 - SCHEDULE OF QUANTITIES
16. IL. 31 (LINCOLN WAY) AT LOVEDALE RD. TRAFFIC SIGNAL MODERNIZATION PLAN
17. IL. 31 (LINCOLN WAY) AT LOVEDALE ROAD
 - CABLE PLAN
 - PHASE DESIGNATION DIAGRAM
 - SCHEDULE OF QUANTITIES
- 18-19. INTERCONNECT PLAN
20. INTERCONNECT SCHEMATIC PLAN

STANDARDS

701006-02 701011-01 701101-01 701301-02 814001
 702001-05 424001-04 857001 880006 701801-03
 780001-01 701501-03 701601-04 701701-04



FULL SIZE PLANS HAVE BEEN PREPARED USING STANDARD ENGINEERING SCALES. REDUCED SIZED PLANS WILL NOT CONFORM TO STANDARD SCALES. IN MAKING MEASUREMENTS ON REDUCED PLANS, THE ABOVE SCALES MAY BE USED.

Prepared by Terry Rammacher Traffic Engineer Date July 1, 2005

CONTRACT NO. 62907

STATE OF ILLINOIS

DEPARTMENT OF TRANSPORTATION

DIVISION OF HIGHWAYS

PLANS FOR PROPOSED FEDERAL AID HIGHWAY

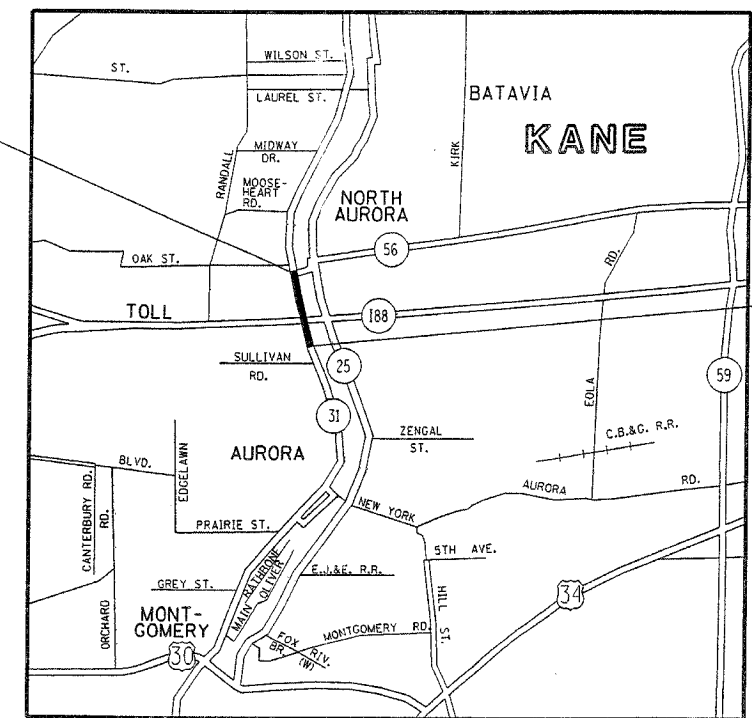
DISTRICT 1
 CONGESTION MITIGATION AIR QUALITY
 FIBER OPTIC COMMUNICATION NETWORKS
 FAU ROUTE 3902 - IL. 31 (LINCOLN WAY) FROM
 IL. 56 (STATE ST.) TO LOVEDALE LANE
 SECTION 2005-003 TS
 KANE COUNTY
 C-91-111-05
 PROJECT: CMM-3902(001)

LOCATION MAP (NOT TO SCALE)



LOCATION OF SECTION INDICATED THUS: -

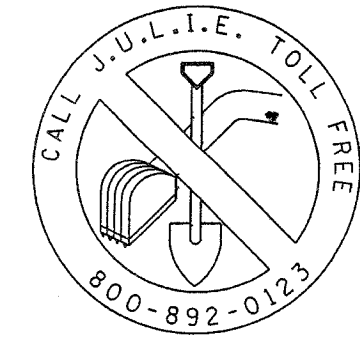
PROJECT BEGIN



PROJECT ENDS

IMPROVEMENT LOCATED IN THE CITY OF NORTH AURORA

BATAVIA TOWNSHIP LOCATION MAP



STATE OF ILLINOIS
 DEPARTMENT OF TRANSPORTATION
 DIVISION OF HIGHWAYS

SUBMITTED July 1, 2005

Debra M. O'Neil
 DEPUTY DIRECTOR OF HIGHWAYS, REGION ENGINEER

August 19, 2005
Mike Hine
 ENGINEER OF DESIGN AND ENVIRONMENT

August 19, 2005
Victor Modest
 DIRECTOR OF HIGHWAYS, CHIEF ENGINEER

PRINTED BY THE AUTHORITY OF THE STATE OF ILLINOIS

Rev.

DISTRICT ONE - BUREAU OF TRAFFIC - TERRY RAMMACHER/DARYLE DREW (847) 705-4420