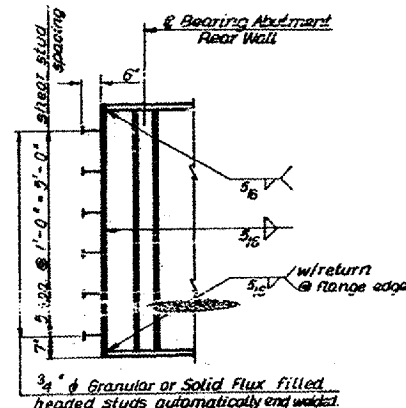
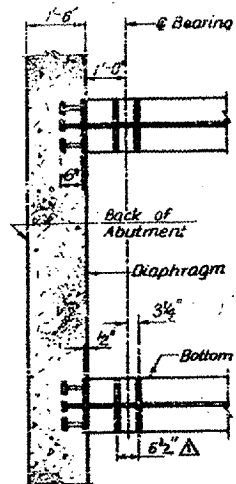
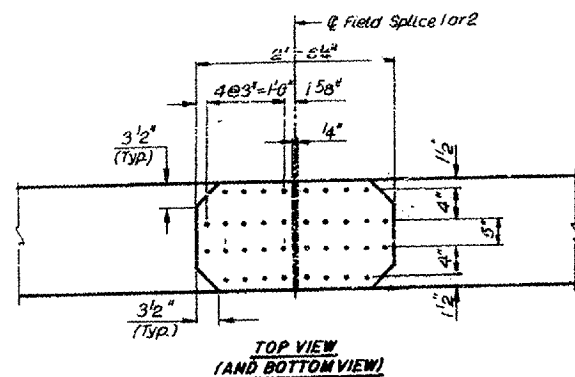
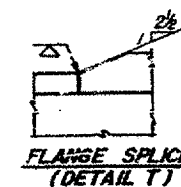
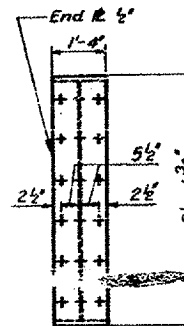


| F.A.I. RTE. | SECTION | COUNTY | TOTAL SHEET NO. |
|-------------|---------------|---------|-----------------|
| 412 | 501HB-2,1HB1P | LASALLE | 17 11 |
| ILLINOIS | | | |

STATE OF ILLINOIS
DEPARTMENT OF TRANSPORTATION



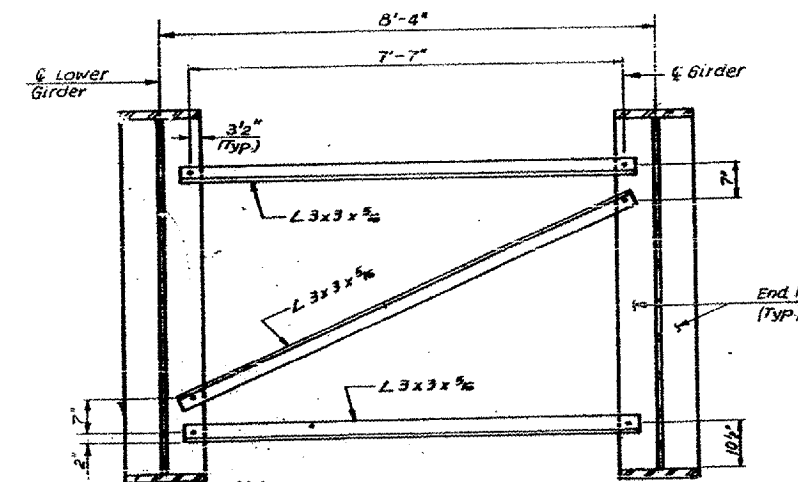
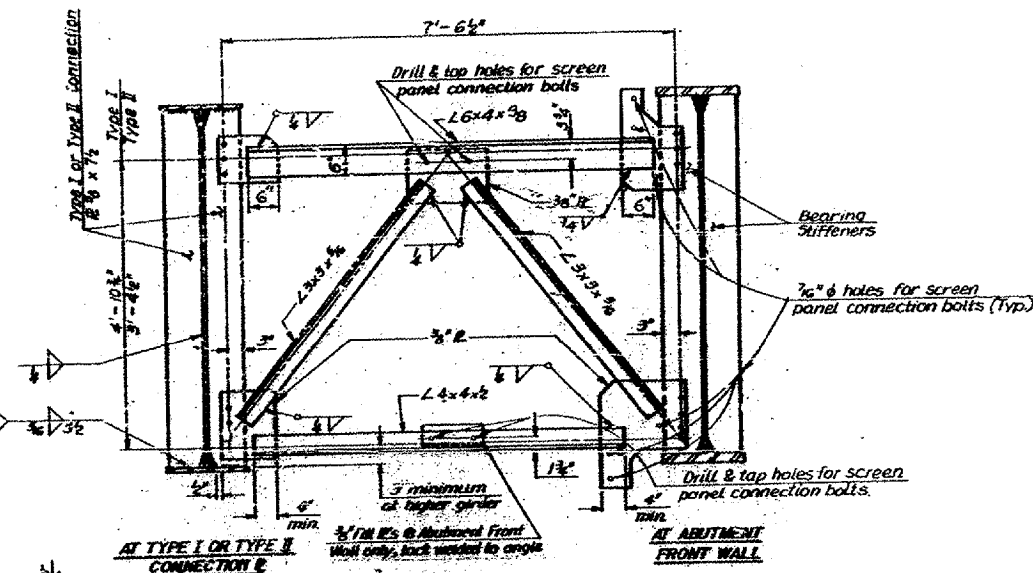
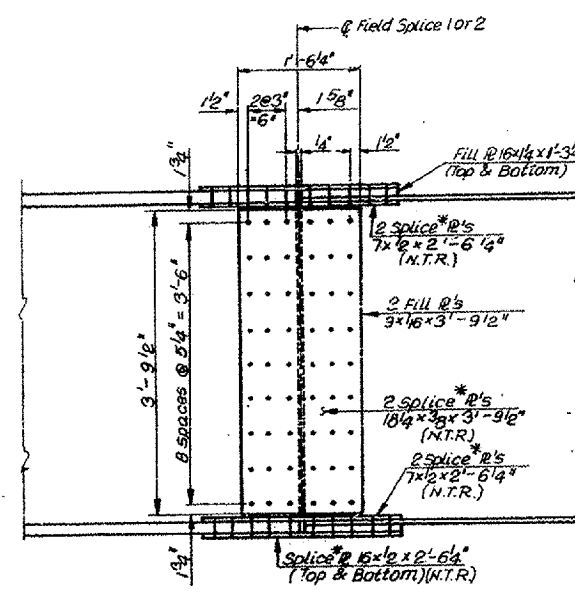
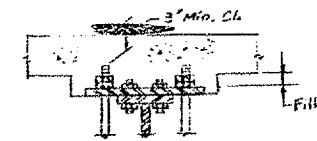
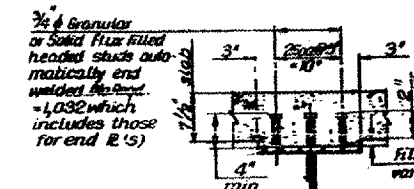
Note: * indicates location of shear studs.



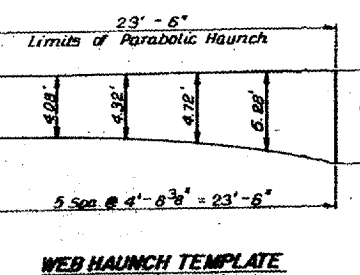
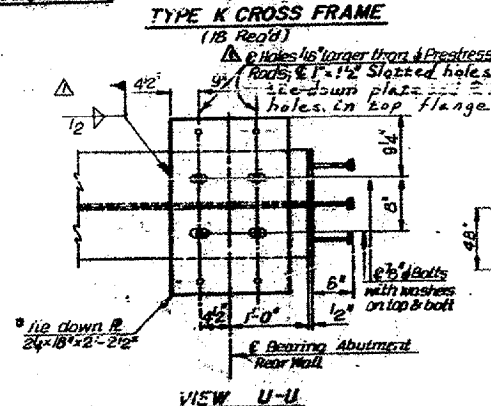
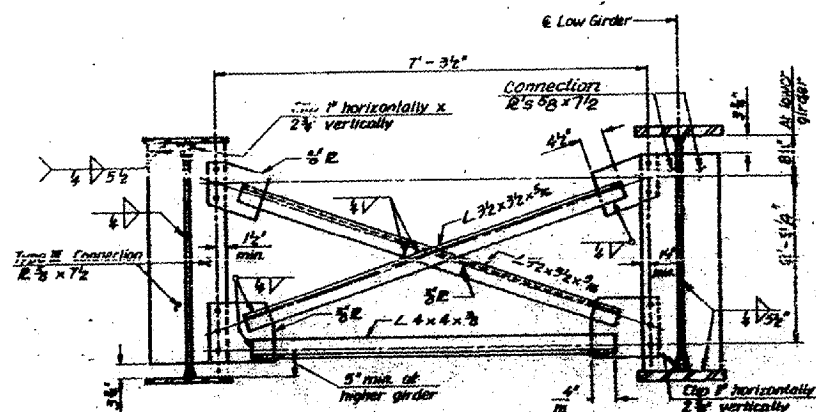
TOP OF WEB ELEVATIONS

| LOCATION | GIRDERS | |
|--------------------------|---------|---------|
| | 1 & 2 | 3 & 4 |
| Cs Key V Abut Rear Wall | 783.457 | 783.600 |
| Cs Key V Abut Front Wall | 783.778 | 783.913 |
| Cs Key V Abut Rear Wall | 784.175 | 784.288 |
| Cs Key V Abut Front Wall | 783.778 | 783.913 |
| Cs Key V Abut Rear Wall | 783.600 | 783.746 |

Note: Elevations shown are for fabrication only. These do not include dead load deflection.



Note: Temporary cross frames are to be removed after deck is poured and prior to placement of Diaphragm concrete.



Notes:
 Connections of cross frames to connection #5 and to bearing stiffeners shall be made with 3/4" bolts, 3/4" oversized holes, and hardened washers.
 For location of Section W-W see Dwg. No. F5.
 For location of End View V-V and Detail T, see Dwg. No. F7.
 End welded studs shall conform to article 70.38 of the Standard specifications.
 For location of View U-U, see Dwg. No. F1 & F14.
 * indicates M225, Gr 50 Steel requirements are applicable.
 N.T.R. indicates Not to Scale.

| REVISIONS | |
|-----------|------|
| NAME | DATE |
| | |
| | |
| | |
| | |
| | |
| | |
| | |
| | |
| | |

ILLINOIS DEPARTMENT OF TRANSPORTATION
**EXISTING STRUCTURE PLANS
 FOR INFORMATION ONLY**
BRIDGE LOCATION 1
S.N. 050-0214
 SCALE: VERT. DRAWN BY RW
 HORIZ. CHECKED BY
 DATE 04/18/05

Date: 04/18/05
Project: c:\projects\cmain05\cm3078\details.dgn