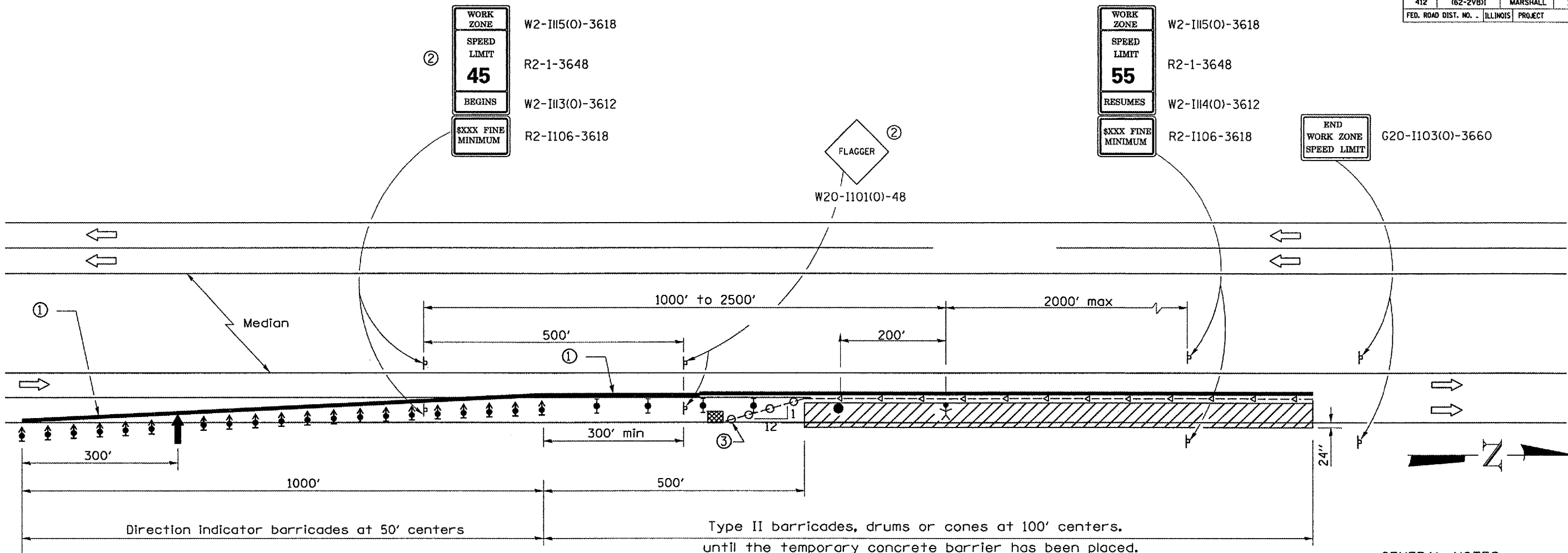
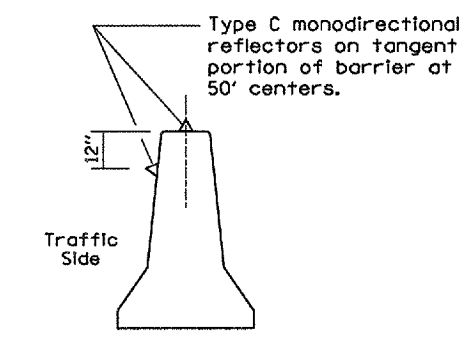


F.A.I. RTE.	SECTION	COUNTY	TOTAL SHEETS	SHEET NO.
412	(62-2VB)I	MARSHALL	19	16
FED. ROAD DIST. NO. - ILLINOIS		PROJECT		



See Standard 701400 for approach Start of lane closure taper



DETAIL A
(BARRIER WALL REFLECTORS)

SYMBOLS

- ↑ Arrow board
- ▨ Work area
- ⊙ Worker
- ⊥ Sign
- ⬆ Direction Indicator barricade with steady burn monodirectional light
- ⬇ Type II barricade, drum, or vertical barricade with steady burn monodirectional light
- Flagger with traffic control sign
- Temporary concrete barrier
- ◁ Type C Monodirectional reflector
- Vertical panel with steady burn monodirectional light.
- ▣ Impact attenuator

- ① ReflectORIZED temporary pavement marking tape shall be placed throughout the taper and along-side the temporary concrete barrier. The edge line shall be white for right lane closure and yellow for left lane closures. Temporary raised reflectORIZED pavement markers at 25' centers shall be used to supplement the pavement marking tape.
- ② Type II barricades, drums or cones shall be used alongside the tangent portion of the work zone to provide protection during the installation of the temporary concrete barrier. Work Zone speed limit signs and FLAGGER signs shall be covered after the temporary concrete barrier is in place and uncovered when the temporary concrete barrier is removed and replaced with Type II barricades, drums or cones to maintain the lane closure. The additional drums, Type II barricades or cones, required shall be included in the cost of Traffic Control and Protection, Standard 701402 (Special).
- ③ Vertical panels at 25' centers with steady burning monodirectional lights.

GENERAL NOTES

This Standard is used where at any time any vehicle, equipment, workers or their activities will encroach on the lane adjacent to the shoulder, or on the shoulder within 24" of the edge of pavement whenever temporary concrete barrier is warranted.

This Standard must always be used in combination with Standard 701400.

This Standard also applies when work is being performed in the left lane. Under these conditions, the set up would be a mirror image to what is shown.

A check barricade shall be placed in the middle of the closed lane and at the shoulder at 1000' centers.

The cost of materials, equipment and labor to utilize this traffic control and protection as shown will be paid for at the contract unit bid price for TRAFFIC CONTROL AND PROTECTION, STANDARD 701402 (SPECIAL) and no further compensation will be allowed.

Temporary concrete barrier shall be paid for according to Section 704 of the Standard Specifications.

REVISIONS	
NAME	DATE

ILLINOIS DEPARTMENT OF TRANSPORTATION
TRAFFIC CONTROL & PROTECTION
STANDARD 701402 (SPECIAL)
 FAI 412 (I-39)
 SECTION (62-2VB)I
 STA. 165+90.23
 MARSHALL COUNTY

SCALE: VERT. _____
 HORIZ. _____
 DATE 04/18/05

DRAWN BY RW
 CHECKED BY _____