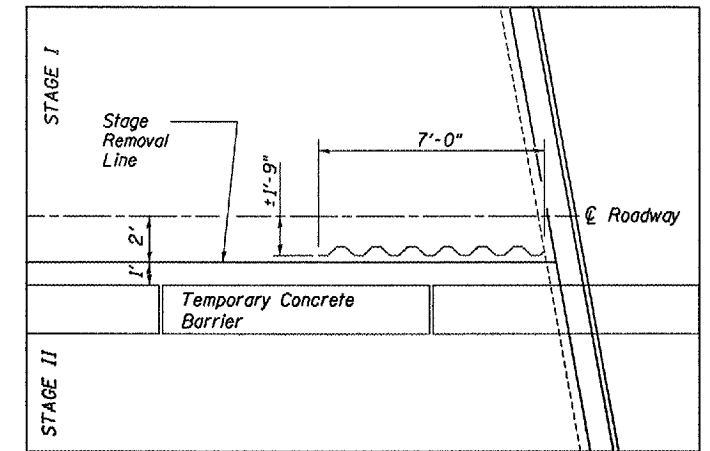
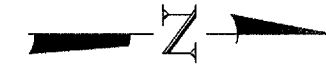
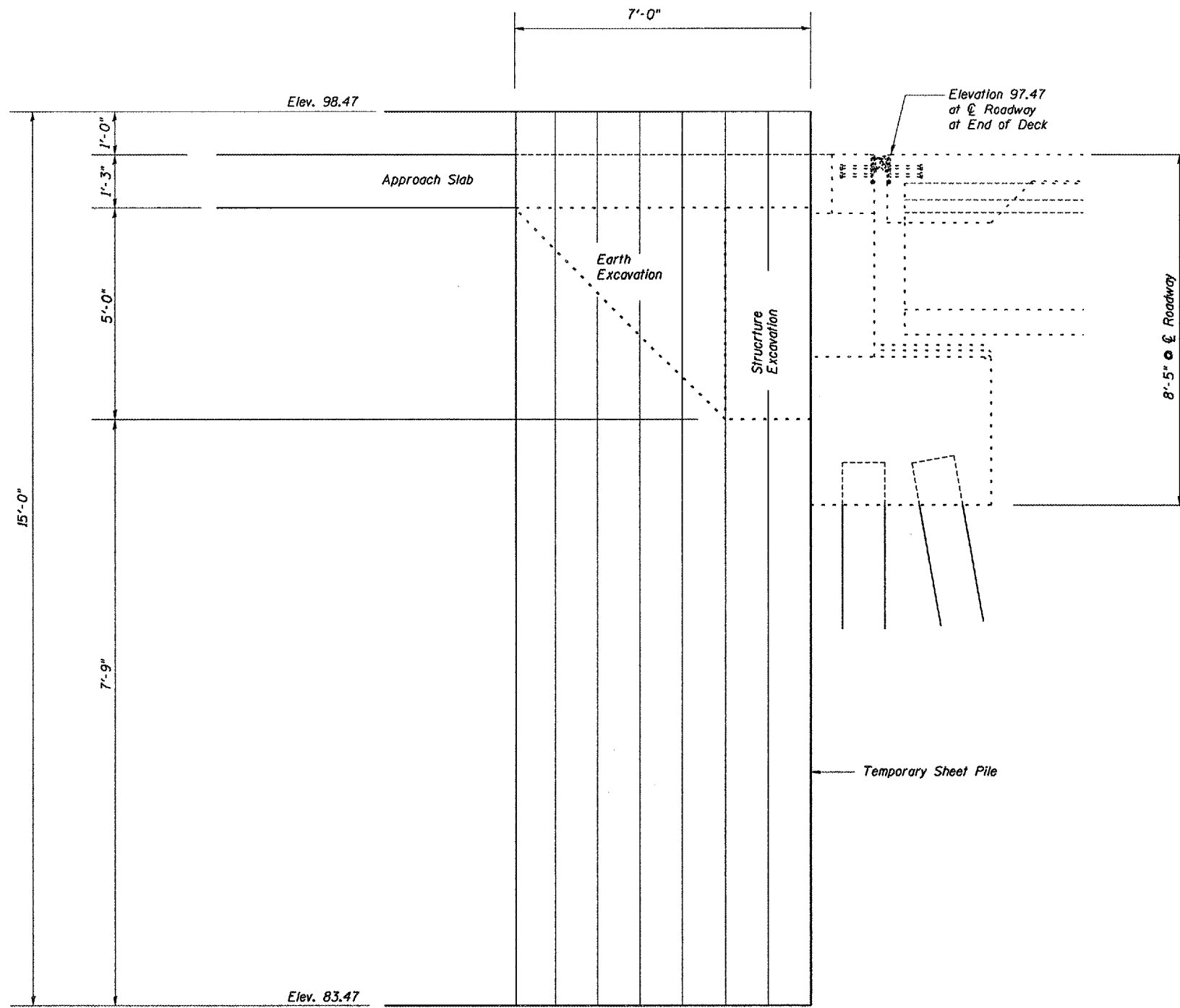
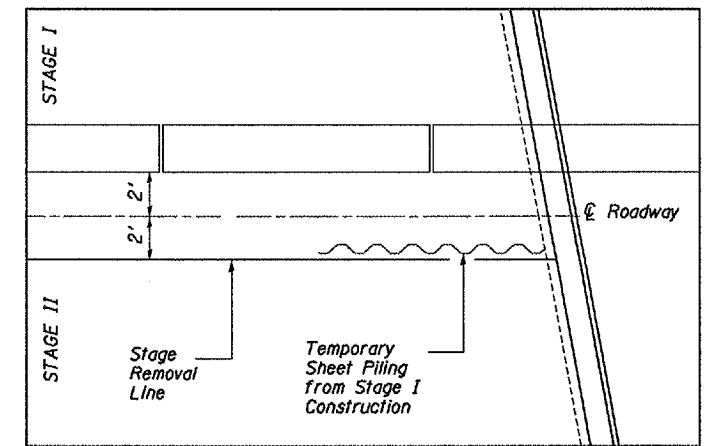
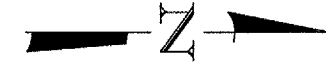


F.A.I. RTE.	SECTION	COUNTY	TOTAL SHEETS	SHEET NO.
412	(62-2VB)I-1	MARSHALL	19	7
FED. ROAD DIST. NO. -		ILLINOIS PROJECT		

BM #1 Northwest quadrant at North abutment  
of S.N. 062-0051 (SB) Chisled " " Elev. 100.00



**DETAIL "A"**  
**STAGE I**



**DETAIL "B"**  
**STAGE II**

REVISIONS	
NAME	DATE

ILLINOIS DEPARTMENT OF TRANSPORTATION  
**TEMPORARY SHEET PILE DETAILS**  
 FAI 412 (I-39)  
 SECTION (62-2VB)I-1  
 STA. 165+90.23  
 MARSHALL COUNTY

SCALE: VERT. \_\_\_\_\_  
 HORIZ. \_\_\_\_\_  
 DATE 06/09/2005

DRAWN BY RLW  
 CHECKED BY \_\_\_\_\_

Date: 06/08/2005  
 File: c:\projects\main06\cm309\details.dgn