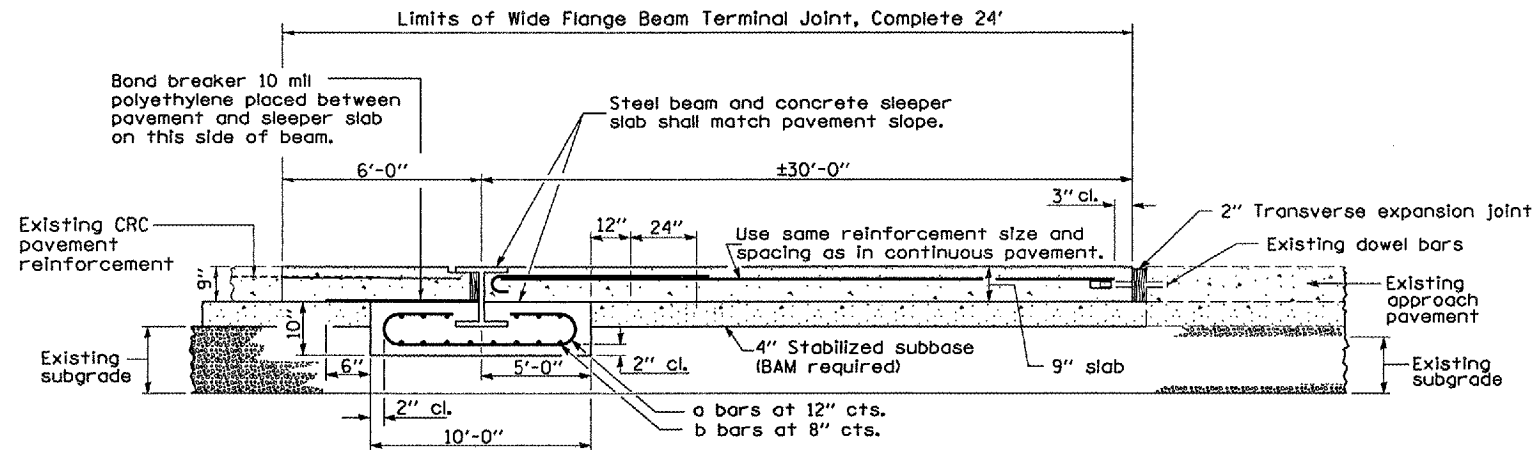
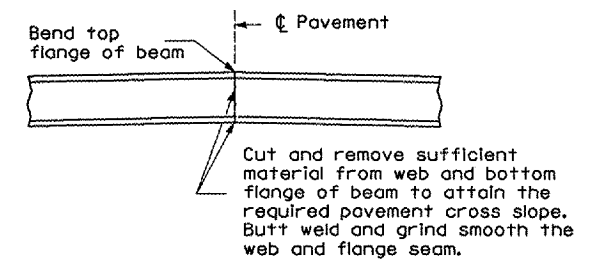


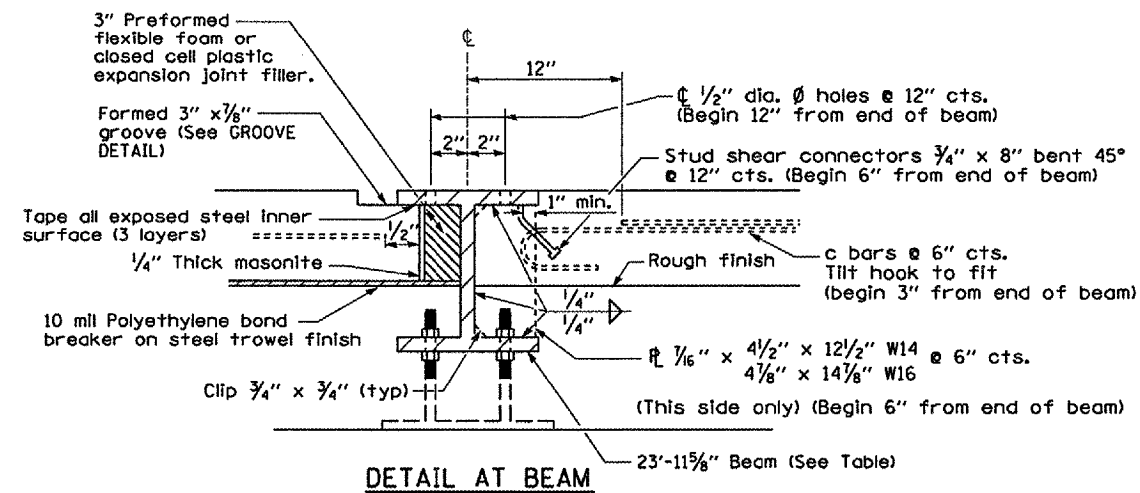
F.A.I. RTE.	SECTION	COUNTY	TOTAL SHEETS	SHEET NO.
55	(53-1.32-3)1-3	GRUNDY & LIVINGSTON	11	9
FED. ROAD DIST. NO. - ILLINOIS		PROJECT		



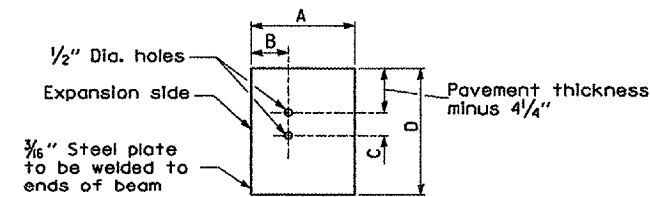
WIDE FLANGE BEAM TERMINAL JOINT



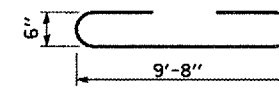
DETAIL OF CUTTING AND WELDING BEAM



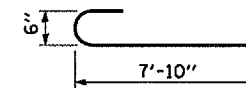
DETAIL AT BEAM



END PLATE



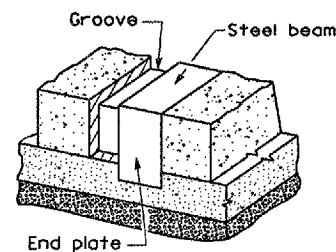
BAR a



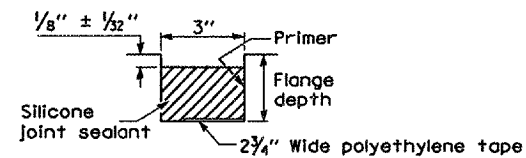
BAR c

PAVEMENT THICKNESS	9"
BEAM SIZE	W14x82
A	10 1/8"
B	4 5/16"
C	3"
D	14 1/4"

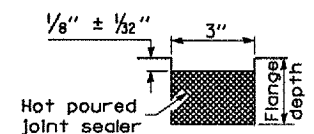
MATERIALS REQUIRED FOR ONE WIDE FLANGE BEAM TERMINAL JOINT COMPLETE				
Bar No.	Size	Length	Shape	
a 24	#4	19'-0"		
b 29	#5	23'-8"		
c 48	#6	8'-6"		
Concrete (cu. yds.)		11.4		
Reinforcement bars (lbs.)		1635		
Structural Steel (lbs.)		W14 2025*		
*Weight includes beam, end plates, stiffener plates and studs.				
Pavement (sq. yds.)		96		
Pavement Reinforcement (sq. yds.)		96		
4" Stabilized Sub-base (sq. yds.)		67		



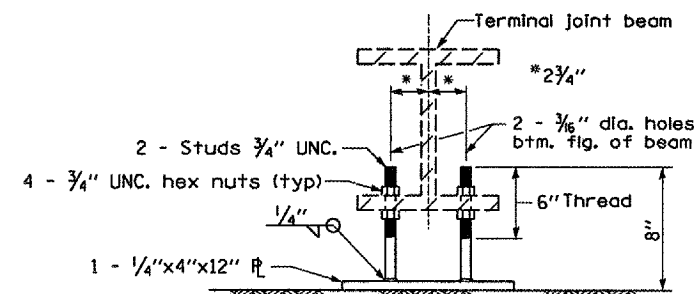
VIEW OF GROOVE AT EDGE OF PAVEMENT



GROOVE DETAIL



GROOVE DETAIL (OPTIONAL)



OPTIONAL ADJUSTABLE CHAIR

REVISIONS	
NAME	DATE

ILLINOIS DEPARTMENT OF TRANSPORTATION

WIDE FLANGE BEAM TERMINAL JOINT, COMPLETE 24'

SCALE: VERT. HORIZ. DATE 06/09/2005

DRAWN BY RLV CHECKED BY