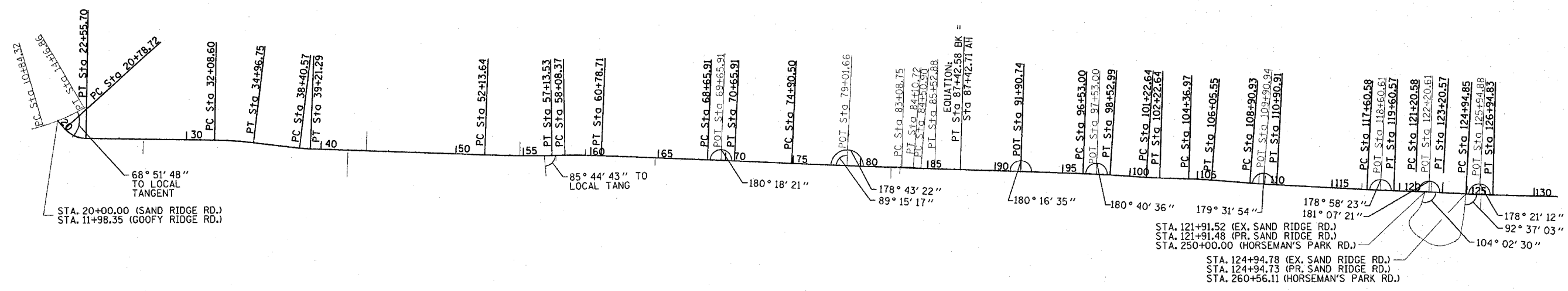


\* PARK ROADS  
 \*\* SAND RIDGE STATE FOREST INTERNAL ROADS 2004



<p>EXIST. CURVE 600                  PI STA. = 12+51.47  <math>\Delta = 14^\circ 23' 40''</math> (LT)                  D = 4' 19' 43"                  R = 1,323.63'                  T = 167.15'                  L = 332.54'                  E = 10.51'                  P.C. STA. = 10+84.32                  P.T. STA. = 14+16.86</p>	<p>PROP. CURVE PS602                  PI STA. = 21+72.52  <math>\Delta = 46^\circ 58' 04''</math> (LT)                  D = 26' 32' 18"                  R = 215.90'                  T = 93.80'                  L = 176.98'                  E = 19.50'                  P.C. STA. = 20+78.72                  P.T. STA. = 22+55.70                  SE = 2.00%                  SE TRANS:                  RT STA 20+20.720 TO STA 21+28.720 (-2.0% - +2.0%)                  RT STA 22+30.700 TO STA 23+80.700 (+2.0 - -2.0%)                  LT STA 20+20.720 TO STA 23+80.700 (-2.0% - -2.0%)</p>	<p>PROP. CURVE PS603                  PI STA. = 33+52.81  <math>\Delta = 5^\circ 57' 19''</math> (RT)                  D = 2' 04' 00"                  R = 2,772.27'                  T = 144.21'                  L = 288.15'                  E = 3.75'                  P.C. STA. = 32+08.60                  P.T. STA. = 34+96.75                  SE = 4.10%                  SE TRANS:                  LT STA 30+18.112 TO STA 32+63.600 (-2.0% - +4.1%)                  RT STA 31+79.088 TO STA 32+63.600 (-2.0 - -4.1%)                  LT STA 34+41.750 TO STA 36+82.502 (+4.1% - -2.0%)                  RT STA 34+41.750 TO STA 35+26.262 (-4.1% - -2.0%)</p>	<p>PROP. CURVE PS604                  PI STA. = 38+80.95  <math>\Delta = 4^\circ 51' 49''</math> (LT)                  D = 6' 01' 31"                  R = 950.93'                  T = 40.38'                  L = 80.72'                  E = 0.86'                  P.C. STA. = 38+40.57                  P.T. STA. = 39+21.29                  SE = 6.00%                  SE TRANS:                  LT STA 37+85.570 TO STA 38+95.570 (-2.0% - -6.0%)                  RT STA 36+82.500 TO STA 38+95.570 (-2.0 - +6.0%)                  LT STA 38+66.290 TO STA 39+76.290 (-6.0% - -2.0%)                  RT STA 38+66.290 TO STA 40+86.290 (+6.0% - -2.0%)</p>	<p>PROP. CURVE PS605                  PI STA. = 54+63.64  <math>\Delta = 2^\circ 55' 29''</math> (LT)                  D = 0' 35' 06"                  R = 9,793.38'                  T = 250.00'                  L = 499.89'                  E = 3.19'                  P.C. STA. = 52+13.64                  P.T. STA. = 57+13.53                  SE = N.C.</p>	<p>PROP. CURVE PS606                  PI STA. = 59+43.58  <math>\Delta = 3^\circ 08' 37''</math> (RT)                  D = 1' 09' 46"                  R = 4,927.44'                  T = 135.20'                  L = 270.34'                  E = 1.85'                  P.C. STA. = 58+08.37                  P.T. STA. = 60+78.71                  SE = 2.70%                  SE TRANS:                  LT STA 55+76.148 TO STA 58+63.370 (-2.0% - +2.7%)                  RT STA 56+98.370 TO STA 58+63.370 (-2.0 - -2.7%)                  LT STA 60+23.710 TO STA 63+10.932 (+2.7% - -2.0%)                  RT STA 60+23.710 TO STA 61+88.710 (-2.7% - -2.0%)</p>	<p>PROP. CURVE PS607                  PI STA. = 69+65.91  <math>\Delta = 0^\circ 18' 21''</math> (RT)                  D = 0' 09' 11"                  R = 37,453.53'                  T = 100.00'                  L = 200.00'                  E = 0.13'                  P.C. STA. = 68+65.91                  P.T. STA. = 70+65.91                  SE = N.C.</p>
--	--	---	---	--	---	---

<p>PROP. CURVE PS608                  PI STA. = 81+16.55  <math>\Delta = 0^\circ 50' 44''</math> (LT)                  D = 0' 04' 03"                  R = 84,852.15'                  T = 626.05'                  L = 1,252.09'                  E = 2.31'                  P.C. STA. = 74+90.50                  P.T. STA. = 87+42.58                  SE = N.C.</p>	<p>EXIST. CURVE 608                  PI STA. = 83+59.74  <math>\Delta = 3^\circ 06' 05''</math> (RT)                  D = 3' 02' 29"                  R = 1,883.93'                  T = 51.00'                  L = 101.98'                  E = 0.69'                  e = N.C.                  P.C. STA. = 83+08.74                  P.T. STA. = 84+10.71</p>	<p>EXIST. CURVE 609                  PI STA. = 85+01.89  <math>\Delta = 2^\circ 40' 11''</math> (LT)                  D = 2' 37' 04"                  R = 2,188.70'                  T = 51.00'                  L = 101.98'                  E = 0.59'                  e = N.C.                  P.C. STA. = 84+50.89                  P.T. STA. = 85+52.87</p>	<p>PROP. CURVE 261                  PI STA. = 97+53.00  <math>\Delta = 1^\circ 40' 36''</math> (RT)                  D = 0' 50' 18"                  R = 6,833.78'                  T = 100.00'                  L = 199.99'                  E = 0.73'                  P.C. STA. = 96+53.00                  P.T. STA. = 98+52.99                  SE = 2.10%                  SE TRANS:                  LT STA 93+85.847 TO STA 97+07.990 (-2.0% - +2.1%)                  RT STA 95+42.990 TO STA 97+07.990 (-2.0 - -2.1%)                  LT STA 97+97.970 TO STA 99+26.56 (+2.1% - 0.0%)                  RT STA 97+97.970 TO STA 99+26.56 (-2.1% - 0.0%)</p>	<p>PROP. CURVE PSC8                  PI STA. = 101+72.64  <math>\Delta = 2^\circ 00' 33''</math> (LT)                  D = 0' 00' 33"                  R = 2,851.67'                  T = 50.01'                  L = 100.00'                  E = 0.44'                  P.C. STA. = 101+22.64                  P.T. STA. = 102+22.64                  SE = 3.97%                  SE TRANS:                  LT STA 99+26.560 TO STA 101+72.620 (0.0% - -3.97%)                  RT STA 99+26.560 TO STA 101+72.620 (0.0 - +3.97%)                  LT STA 101+72.620 TO STA 103+40.321 (-3.97% - 0.0%)                  RT STA 101+72.620 TO STA 103+40.321 (+3.97% - 0.0%)</p>	<p>PROP. CURVE PSC9                  PI STA. = 105+21.28  <math>\Delta = 2^\circ 46' 02''</math> (RT)                  D = 1' 38' 30"                  R = 3,490.39'                  T = 84.31'                  L = 168.58'                  E = 1.02'                  P.C. STA. = 104+36.97                  P.T. STA. = 106+05.55                  SE = 3.60%                  SE TRANS:                  LT STA 103+40.321 TO STA 104+91.960 (0.0% - +3.6%)                  RT STA 103+40.321 TO STA 104+91.960 (0.0% - -3.6%)                  LT STA 105+50.540 TO STA 108+04.710 (+3.6% - 0.0%)                  RT STA 105+50.540 TO STA 108+04.710 (-3.6% - 0.0%)</p>	<p>PROP. CURVE 253                  PI STA. = 109+90.93  <math>\Delta = 1^\circ 32' 38''</math> (LT)                  D = 0' 46' 19"                  R = 7,421.64'                  T = 100.00'                  L = 199.99'                  E = 0.67'                  P.C. STA. = 108+90.93                  P.T. STA. = 110+90.91                  SE = 2.00%                  SE TRANS:                  LT STA 108+04.710 TO STA 109+45.920 (0.0% - -2.0%)                  RT STA 108+04.710 TO STA 109+45.920 (0.0 - +2.0%)                  LT STA 110+35.900 TO STA 112+00.900 (-2.0% - 2.0%)                  RT STA 110+35.900 TO STA 113+65.900 (+2.0% - 2.0%)</p>	<p>PROP. CURVE 232                  PI STA. = 118+60.58  <math>\Delta = 1^\circ 01' 37''</math> (LT)                  D = 0' 30' 49"                  R = 11,156.97'                  T = 100.00'                  L = 199.99'                  E = 0.45'                  P.C. STA. = 117+60.58                  P.T. STA. = 119+60.57                  SE = N.C.</p>	<p>PROP. CURVE 231                  PI STA. = 122+20.58  <math>\Delta = 1^\circ 07' 21''</math> (RT)                  D = 0' 33' 40"                  R = 10,209.51'                  T = 100.00'                  L = 199.99'                  E = 0.49'                  P.C. STA. = 121+20.58                  P.T. STA. = 123+20.57                  SE = N.C.</p>
---	---	---	---	--	---	--	--	--



PROP. CURVE 229  
 PI STA. = 125+94.85  
 $\Delta = 1^\circ 38' 47''$  (LT)  
 D = 0' 49' 24"  
 R = 6,959.17'  
 T = 100.00'  
 L = 199.99'  
 E = 0.72'  
 P.C. STA. = 124+94.85  
 P.T. STA. = 126+94.83  
 SE = 2.10%  
 SE TRANS:  
 LT STA 123+84.830 TO STA 125+49.830 (-2.0% - -2.1%)  
 RT STA 122+27.687 TO STA 125+49.830 (-2.0 - +2.1%)  
 LT STA 126+39.820 TO STA 128+04.820 (-2.1% - -2.0%)  
 RT STA 126+39.820 TO STA 129+61.963 (+2.1% - -2.0%)

REVISIONS	
NAME	DATE

ILLINOIS DEPARTMENT OF TRANSPORTATION

## ALIGNMENT LAYOUT SAND RIDGE ROAD

VERT. N/A  
 SCALE: HORIZ. 1" = 400'  
 DATE OCT 2003

DRAWN BY RLR  
 CHECKED BY JCN