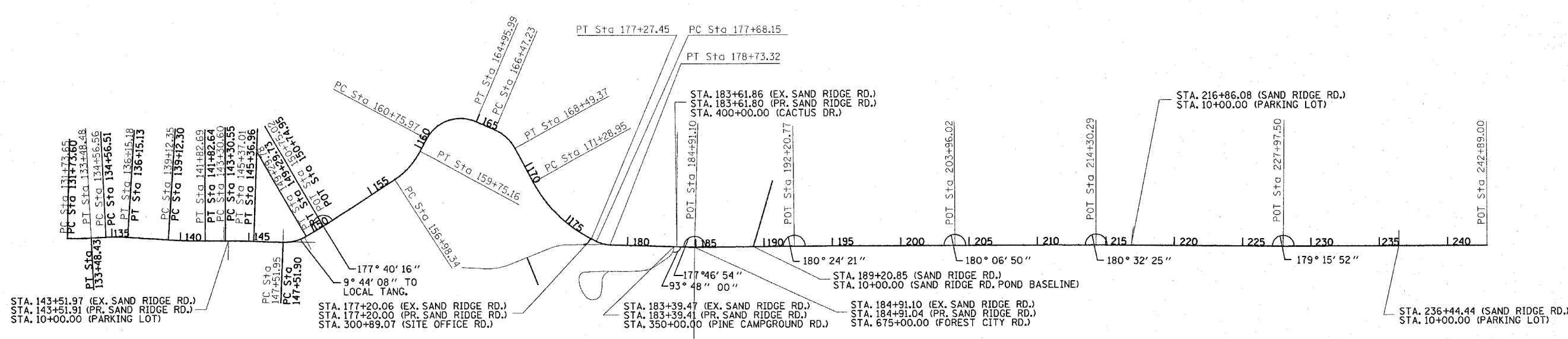


F.A. RTE.	SECTION	COUNTY	TOTAL SHEETS	SHEET NO.
		MASON	16	16
STA. _____ TO STA. _____		ILLINOIS FED. AID PROJECT		

EXIST. CURVE PSC10	PROP. CURVE PSC10	EXIST. CURVE PSC11	PROP. CURVE PSC11	EXIST. CURVE PSC12	PROP. CURVE PSC12	EXIST. CURVE PSC13	PROP. CURVE PSC13	EXIST. CURVE PSC14	PROP. CURVE PSC14
PI STA. = 132+61.11 Δ = 4° 15' 30" (LT) D = 2° 26' 09" R = 2,352.24' T = 87.45' L = 174.83' E = 1.63' P.C. STA. = 131+73.65 P.T. STA. = 133+48.48	PI STA. = 132+61.05 Δ = 4° 15' 30" (LT) D = 2° 26' 09" R = 2,352.24' T = 87.45' L = 174.83' E = 1.63' P.C. STA. = 131+73.60 P.T. STA. = 133+48.43 SE = 4.60% SE TRANS: LT STA 131+35.389 TO STA 132+28.650 (-2.0% - -4.6%) RT STA 129+91.911 TO STA 132+28.650 (-2.0 - +4.6%) LT STA 132+93.480 TO STA 133+89.020 (-4.6% - 0.0%) RT STA 132+93.480 TO STA 133+89.020 (+4.6% - 0.0%)	PI STA. = 135+35.96 Δ = 6° 34' 14" (RT) D = 4° 08' 32" R = 1,383.17' T = 79.40' L = 158.62' E = 2.28' P.C. STA. = 134+56.56 P.T. STA. = 136+15.18	PI STA. = 135+35.91 Δ = 6° 34' 14" (RT) D = 4° 08' 32" R = 1,383.17' T = 79.40' L = 158.62' E = 2.28' P.C. STA. = 134+56.51 P.T. STA. = 136+15.13 SE = 5.90% SE TRANS: LT STA 133+89.020 TO STA 135+11.560 (0.0% - +5.9%) RT STA 133+89.020 TO STA 135+11.560 (0.0 - -5.9%) LT STA 135+11.560 TO STA 138+27.016 (+5.9% - 0.0%) RT STA 135+11.560 TO STA 138+27.016 (-5.9% - 0.0%)	PI STA. = 140+47.57 Δ = 3° 44' 40" (LT) D = 1° 23' 06" R = 4,136.74' T = 135.22' L = 270.34' E = 2.21' P.C. STA. = 139+12.35 P.T. STA. = 141+82.69	PI STA. = 140+47.52 Δ = 3° 44' 40" (LT) D = 1° 23' 06" R = 4,136.74' T = 135.22' L = 270.34' E = 2.21' P.C. STA. = 139+12.30 P.T. STA. = 141+82.64 SE = 3.10% SE TRANS: LT STA 138+27.063 TO STA 139+67.290 (0.0% - -3.1%) RT STA 138+27.063 TO STA 139+67.290 (0.0 - +3.1%) LT STA 141+27.630 TO STA 142+75.689 (-3.1% - 0.0%) RT STA 141+27.630 TO STA 142+75.689 (+3.1% - 0.0%)	PI STA. = 144+33.82 Δ = 2° 01' 14" (RT) D = 0° 58' 44" R = 5,853.14' T = 103.21' L = 206.41' E = 0.91' P.C. STA. = 143+30.60 P.T. STA. = 145+37.01	PI STA. = 144+33.77 Δ = 2° 01' 14" (RT) D = 0° 58' 44" R = 5,853.14' T = 103.21' L = 206.41' E = 0.91' P.C. STA. = 143+30.55 P.T. STA. = 145+36.96 SE = 2.30% SE TRANS: LT STA 142+75.689 TO STA 143+85.540 (0.0% - 2.3%) RT STA 142+75.689 TO STA 143+85.540 (0.0 - -2.3%) LT STA 144+90.428 TO STA 145+78.139 (+2.3% - 0.0%) RT STA 144+90.428 TO STA 145+78.139 (-2.3% - 0.0%)	PI STA. = 148+43.33 Δ = 32° 29' 36" (LT) D = 18° 16' 18" R = 313.58' T = 91.38' L = 177.83' E = 13.04' P.C. STA. = 147+51.95 P.T. STA. = 149+29.78	PI STA. = 148+43.28 Δ = 32° 29' 36" (LT) D = 18° 16' 18" R = 313.58' T = 91.38' L = 177.83' E = 13.04' P.C. STA. = 147+51.90 P.T. STA. = 149+29.73 SE = 6.00% SE TRANS: LT STA 145+78.139 TO STA 148+06.950 (0.0% - -6.0%) RT STA 145+78.139 TO STA 148+06.950 (0.0 - +6.0%) LT STA 148+74.780 TO STA 149+84.780 (-6.0% - -2.0%) RT STA 148+74.780 TO STA 150+94.780 (+6.0% - -2.0%)



EXIST. CURVE PSC15 PI STA. = 158+39.80 Δ = 29° 06' 09" (LT) D = 10° 30' 47" R = 545.00' T = 141.47' L = 276.83' E = 18.06' P.C. STA. = 156+98.34 P.T. STA. = 159+75.16	EXIST. CURVE PSC16 PI STA. = 163+35.98 Δ = 85° 23' 22" (RT) D = 20° 19' 48" R = 281.83' T = 260.02' L = 420.02' E = 101.62' P.C. STA. = 160+75.97 P.T. STA. = 164+95.99	EXIST. CURVE PSC17 PI STA. = 167+52.13 Δ = 37° 49' 13" (RT) D = 18° 42' 36" R = 306.23' T = 104.91' L = 202.14' E = 17.47' P.C. STA. = 166+47.23 P.T. STA. = 168+49.37	EXIST. CURVE PSC18 PI STA. = 174+37.51 Δ = 34° 21' 50" (LT) D = 5° 44' 30" R = 997.90' T = 308.56' L = 598.50' E = 46.61' P.C. STA. = 171+28.95 P.T. STA. = 177+27.45	EXIST. CURVE PSC19 PI STA. = 178+21.61 Δ = 25° 16' 10" (LT) D = 24° 01' 41" R = 238.45' T = 53.45' L = 105.17' E = 5.92' P.C. STA. = 177+68.15 P.T. STA. = 178+73.32
---	--	---	--	---

REVISIONS	
NAME	DATE

ILLINOIS DEPARTMENT OF TRANSPORTATION
**ALIGNMENT LAYOUT
 SAND RIDGE ROAD**
 SCALE: VERT. N/A
 HORIZ. 1" = 400'
 DATE OCT 2003
 DRAWN BY RLR
 CHECKED BY JCN