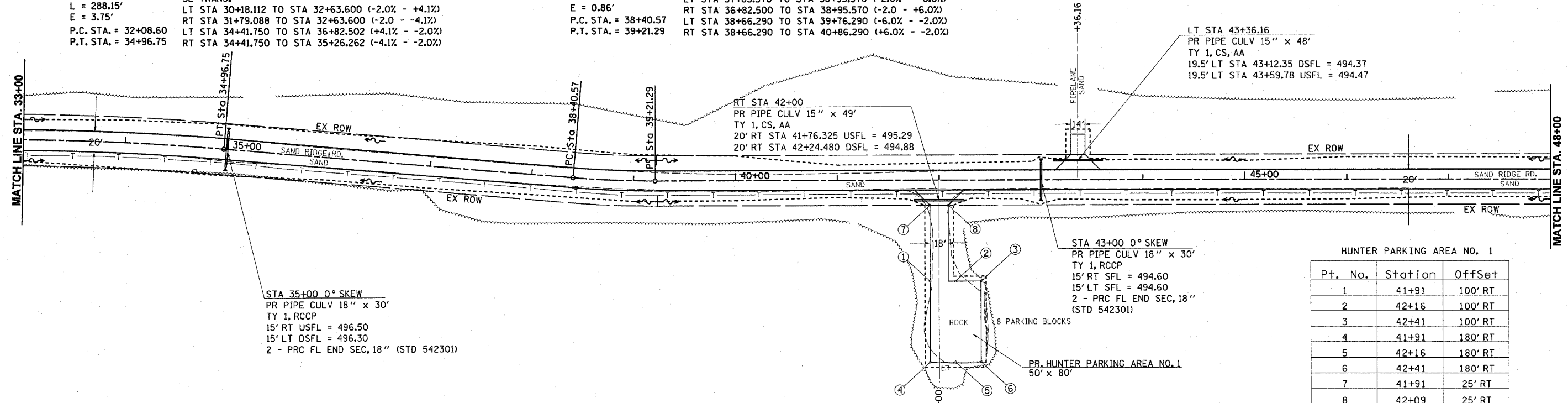


PROP. CURVE PS603
 PI STA. = 33+52.81
 $\Delta = 5^{\circ} 57' 19''$ (RT)
 $D = 2^{\circ} 04' 00''$
 $R = 2,772.27'$
 $T = 144.21'$
 $L = 288.15'$
 $E = 3.75'$
 P.C. STA. = 32+08.60
 P.T. STA. = 34+96.75

SE = 4.10%
 SE TRANS:
 LT STA 30+18.112 TO STA 32+63.600 (-2.0% - +4.1%)
 RT STA 31+79.088 TO STA 32+63.600 (-2.0 - -4.1%)
 LT STA 34+41.750 TO STA 36+82.502 (+4.1% - -2.0%)
 RT STA 34+41.750 TO STA 35+26.262 (-4.1% - -2.0%)

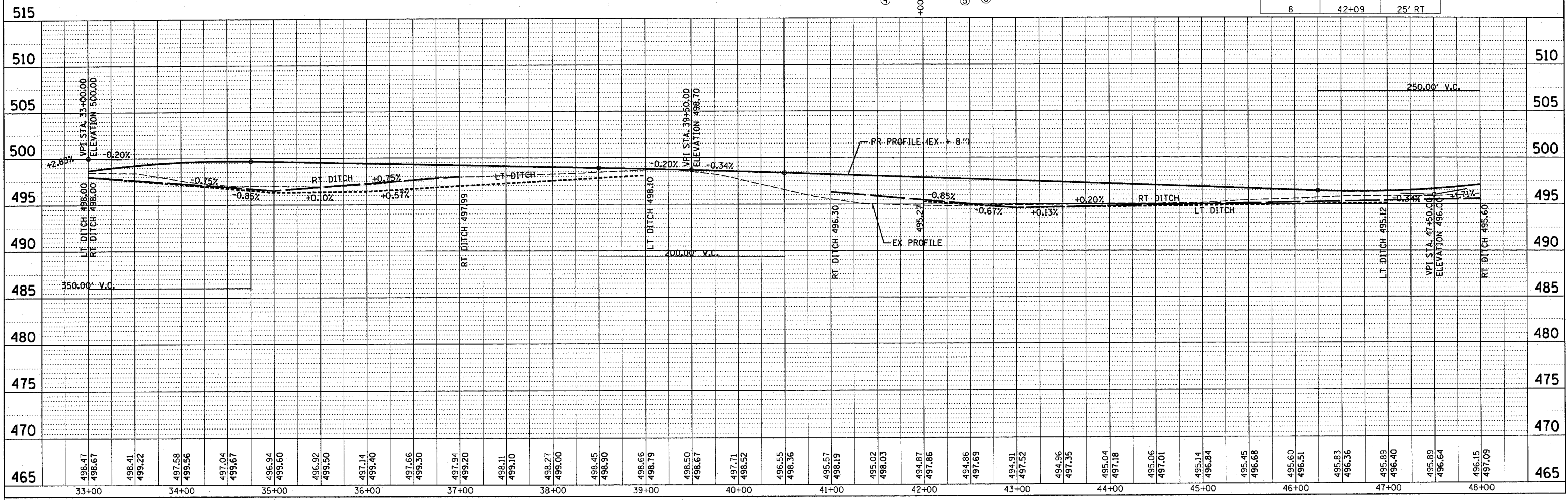
PROP. CURVE PS604
 PI STA. = 38+80.95
 $\Delta = 4^{\circ} 51' 49''$ (LT)
 $D = 6^{\circ} 01' 31''$
 $R = 950.93'$
 $T = 40.38'$
 $L = 80.72'$
 $E = 0.86'$
 P.C. STA. = 38+40.57
 P.T. STA. = 39+21.29

SE = 6.00%
 SE TRANS:
 LT STA 37+85.570 TO STA 38+95.570 (-2.0% - -6.0%)
 RT STA 36+82.500 TO STA 38+95.570 (-2.0 - +6.0%)
 LT STA 38+66.290 TO STA 39+76.290 (-6.0% - -2.0%)
 RT STA 38+66.290 TO STA 40+86.290 (+6.0% - -2.0%)



HUNTER PARKING AREA NO. 1

Pt. No.	Station	Offset
1	41+91	100' RT
2	42+16	100' RT
3	42+41	100' RT
4	41+91	180' RT
5	42+16	180' RT
6	42+41	180' RT
7	41+91	25' RT
8	42+09	25' RT



PLAN

DATE	BY

DATE

BY

DATE

BY

DATE

BY

PROFILE

DATE	BY

DATE

BY

DATE

BY

PROJECT: 0654196.P&PSANDRIDGE.DGN
 2/9/2004
 REF 01