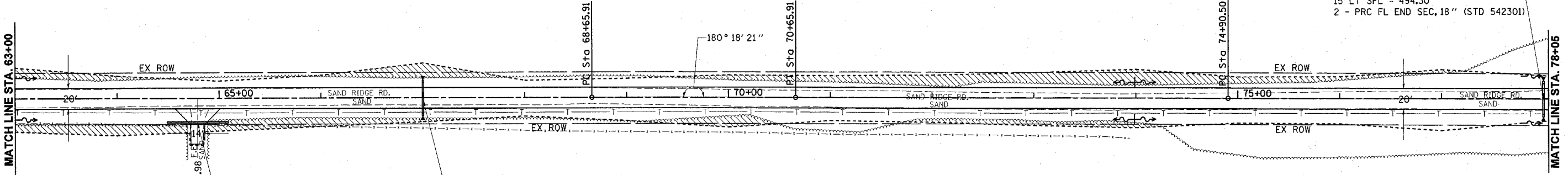


PROP. CURVE PS607
PI STA. = 69+65.91
 $\Delta = 0^\circ 18' 21''$ (RT)
D = 0' 09' 11"
R = 37,453.53'
T = 100.00'
L = 200.00'
E = 0.13'
P.C. STA. = 68+65.91
P.T. STA. = 70+65.91 E = N.C.

STA 78+00 0° SKEW
PR PIPE CULV 18" x 30'
TY 1, RCCP
15' RT SFL = 494.30
15' LT SFL = 494.30
2 - PRC FL END SEC, 18" (STD 542301)



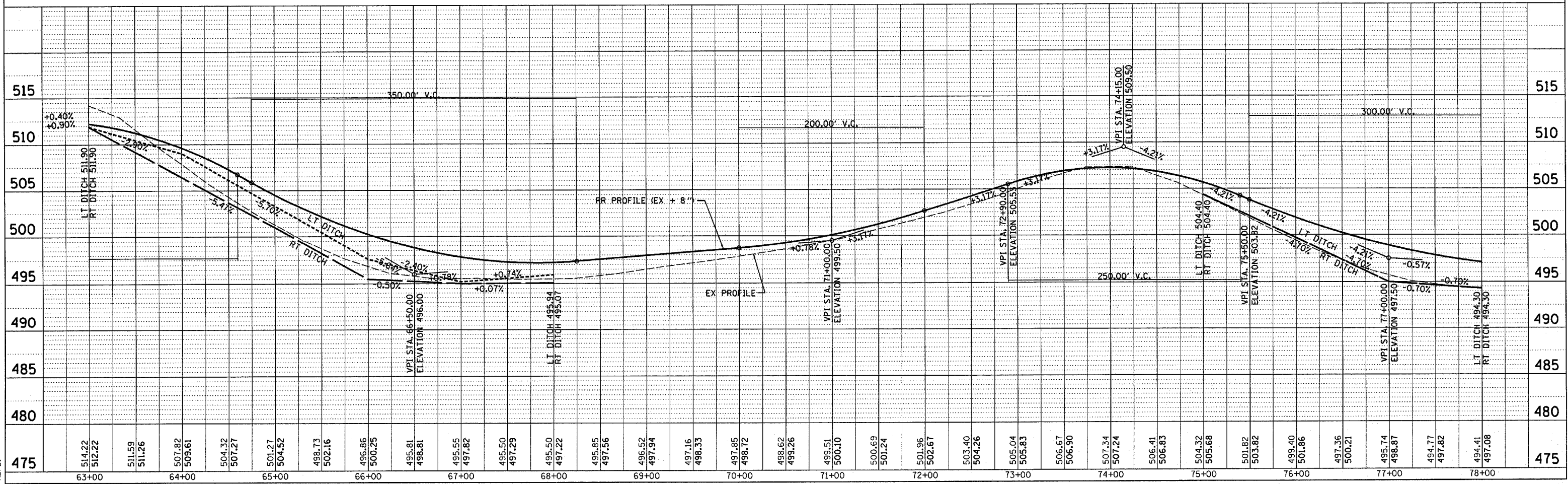
RT STA 64+78.98
PR PIPE CULV 15" x 48'
TY 1, CS, AA
23' RT STA 64+48.98 USFL = 503.76
23' RT STA 65+08.98 DSFL = 500.48

STA 67+00 0° SKEW
PR PIPE CULV 18" x 30'
TY 1, RCCP
15' RT DSFL = 495.00
15' LT USFL = 495.20
2 - PRC FL END SEC, 18" (STD 542301)

STA. 63+00 TO STA. 67+70
STA. 69+40 TO STA. 78+05
PR TREE REMOVAL = 1.73 ACRES
NOTE : (1) MEASURED AREA FOR PAYMENT
3' OUTSIDE CONST. LIMITS
TO 3' OUTSIDE CONSTRUCTION LIMITS
(2) SAVE AS MANY TREES AS POSSIBLE

PLAN	DATE
SURVEYED	
PLOTTED	
RT. OF WAY CHECKED	
NOTE BOOK	
ADD FILE NAME	

PROFILE	DATE
SURVEYED	
PLOTTED	
STRUCTURE NOTATIONS CHFD	



Projects\d654196\p&psandr-dge.dgn
2/6/2004
*REF01