

PROP. CURVE PS608  
 PI STA. = 81+16.55  
 $\Delta = 0^\circ 50' 44''$  (LT)  
 $D = 0^\circ 04' 03''$   
 $R = 84,852.15'$   
 $T = 626.05'$   
 $L = 1,252.09'$   
 $E = 2.31'$   
 P.C. STA. = 74+90.50  
 P.T. STA. = 87+42.58  
 $E = N.C.$

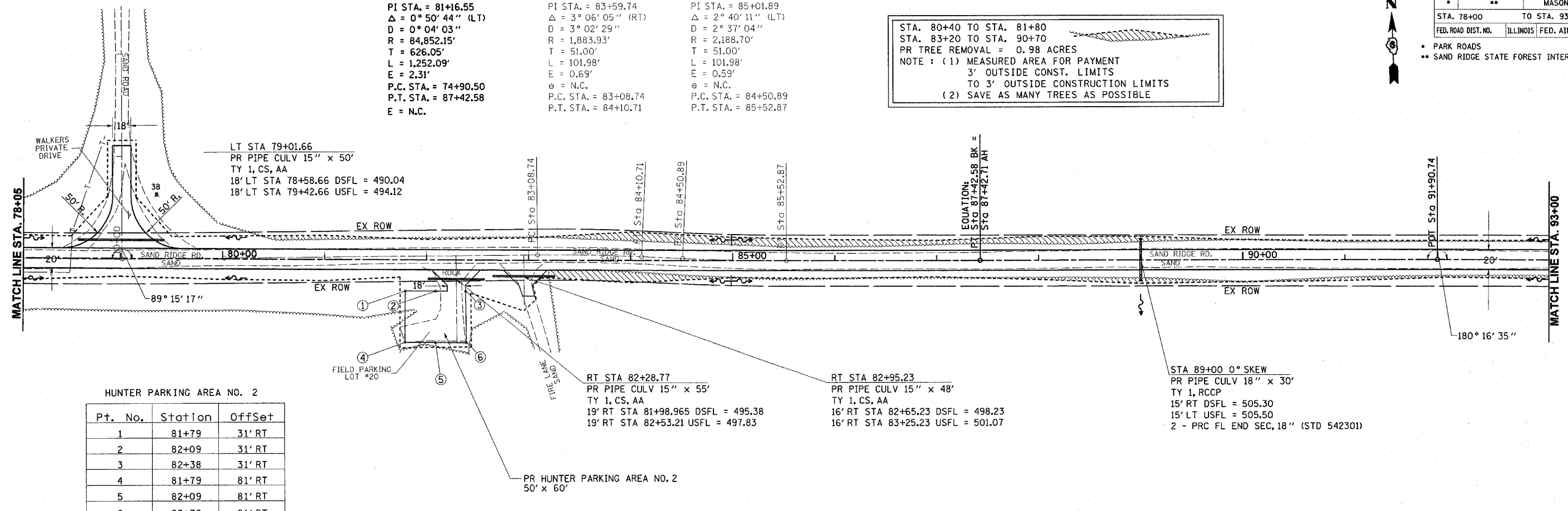
EXIST. CURVE 608  
 PI STA. = 83+59.74  
 $\Delta = 3^\circ 06' 05''$  (RT)  
 $D = 3^\circ 02' 29''$   
 $R = 1,883.93'$   
 $T = 51.00'$   
 $L = 101.98'$   
 $E = 0.69'$   
 $e = N.C.$   
 P.C. STA. = 83+08.74  
 P.T. STA. = 84+10.71

EXIST. CURVE 609  
 PI STA. = 85+01.89  
 $\Delta = 2^\circ 40' 11''$  (LT)  
 $D = 2^\circ 37' 04''$   
 $R = 2,188.70'$   
 $T = 51.00'$   
 $L = 101.98'$   
 $E = 0.59'$   
 $e = N.C.$   
 P.C. STA. = 84+50.89  
 P.T. STA. = 85+52.87

STA. 80+40 TO STA. 81+80  
 STA. 83+20 TO STA. 90+70  
 PR TREE REMOVAL = 0.98 ACRES  
 NOTE : (1) MEASURED AREA FOR PAYMENT  
 3' OUTSIDE CONST. LIMITS  
 TO 3' OUTSIDE CONSTRUCTION LIMITS  
 (2) SAVE AS MANY TREES AS POSSIBLE

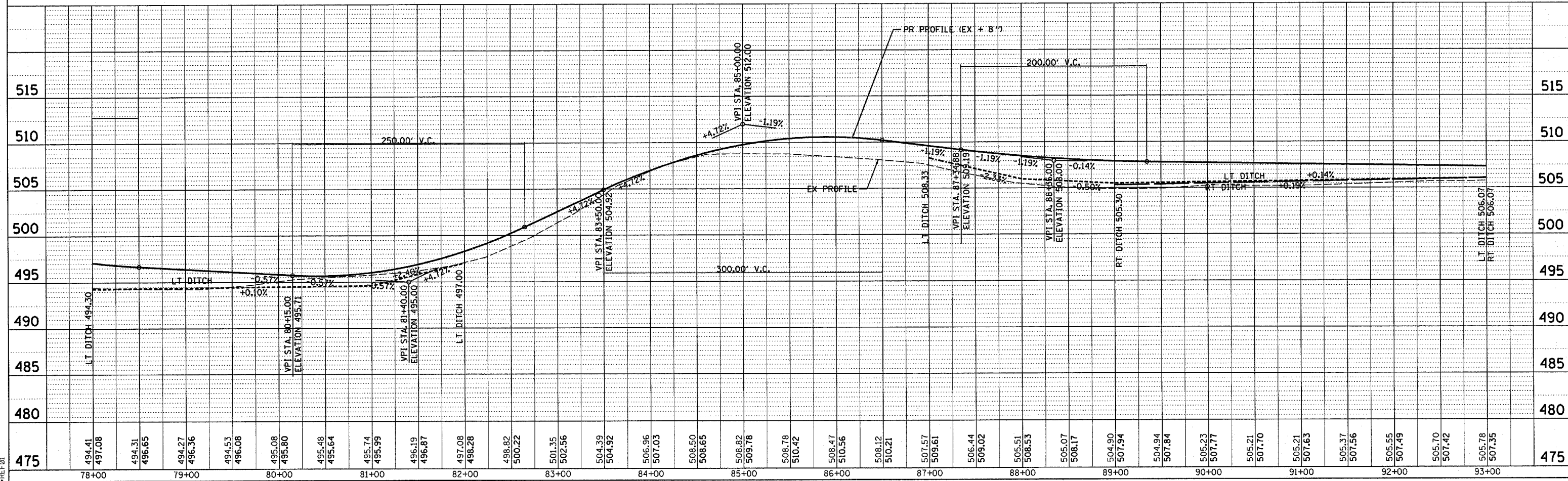
DATE  
 BY  
 REQUESTED  
 PLAN  
 CHECKED  
 PLOTTED  
 NOTE BOOK  
 NO.

DATE  
 BY  
 PROFILE  
 CHECKED  
 PLOTTED  
 NOTE BOOK  
 NO.



HUNTER PARKING AREA NO. 2

Pt. No.	Station	Offset
1	81+79	31' RT
2	82+09	31' RT
3	82+38	31' RT
4	81+79	81' RT
5	82+09	81' RT
6	82+39	81' RT



c:\projects\0654196\p&psandridge.dgn  
 2/9/2004  
 -REFB-