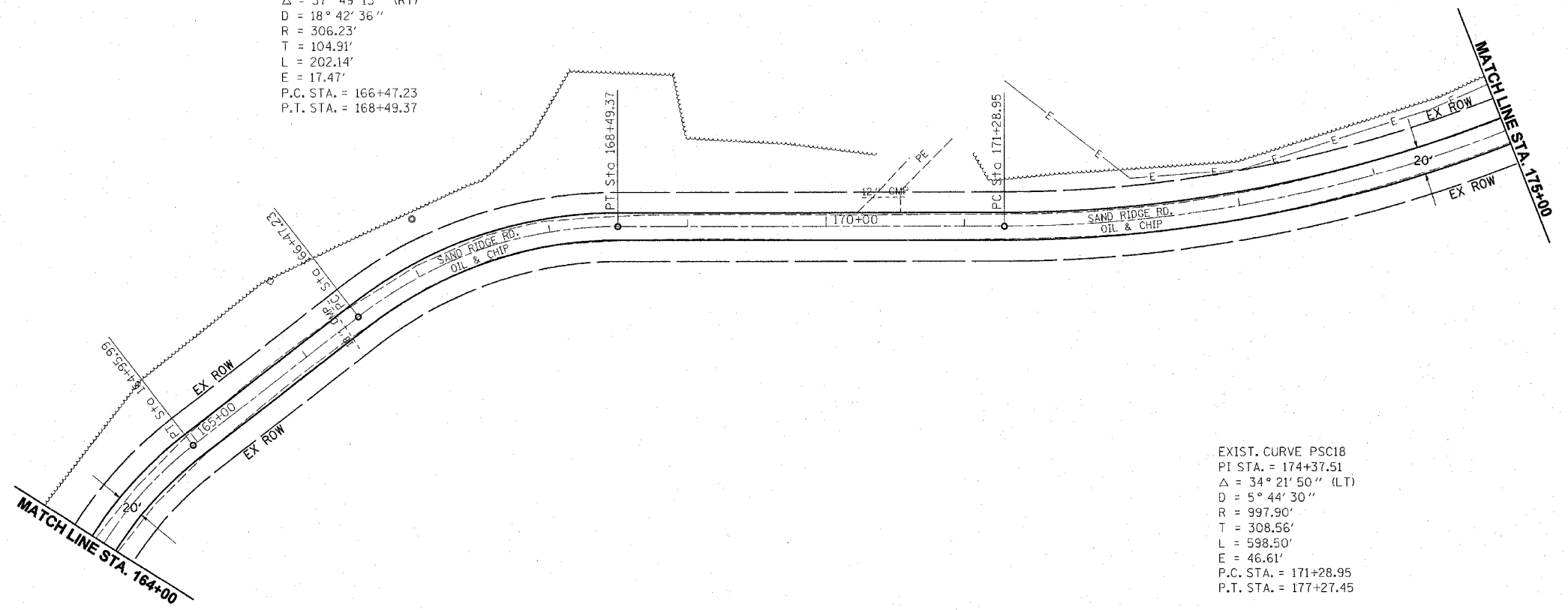


EXIST. CURVE PSC17
 PI STA. = 167+52.13
 $\Delta = 37^\circ 49' 13''$ (RT)
 $D = 18^\circ 42' 36''$
 $R = 306.23'$
 $T = 104.91'$
 $L = 202.14'$
 $E = 17.47'$
 P.C. STA. = 166+47.23
 P.T. STA. = 168+49.37

EXIST. CURVE PSC18
 PI STA. = 174+37.51
 $\Delta = 34^\circ 21' 50''$ (LT)
 $D = 5^\circ 44' 30''$
 $R = 997.90'$
 $T = 308.56'$
 $L = 598.50'$
 $E = 46.61'$
 P.C. STA. = 171+28.95
 P.T. STA. = 177+27.45

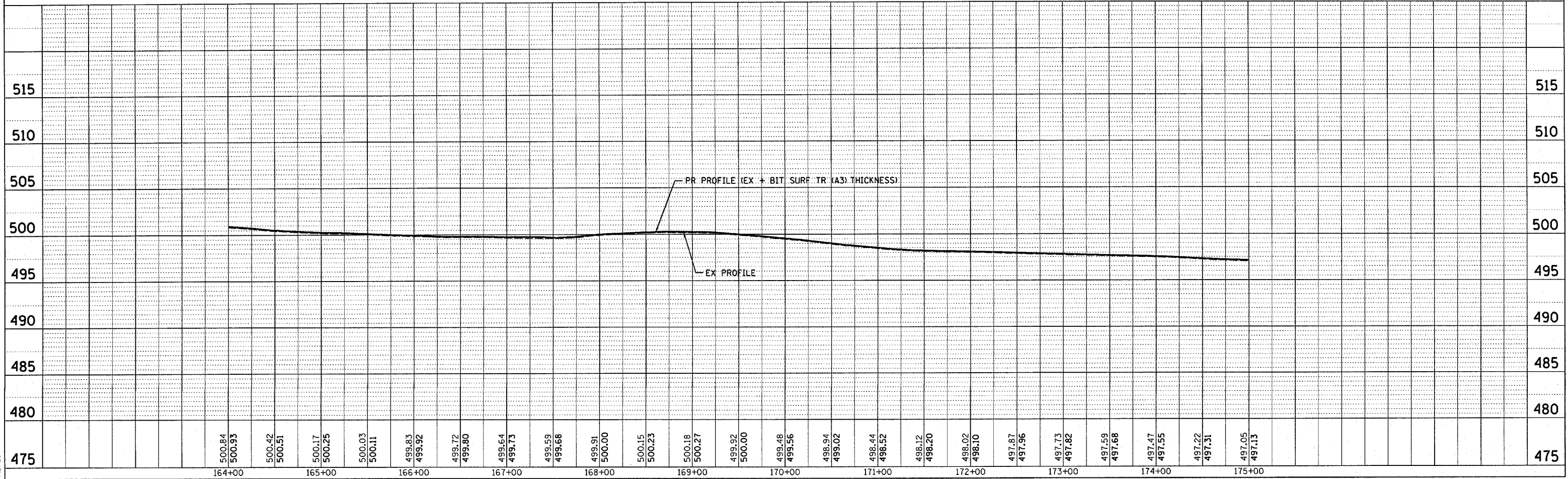


PLAN

DATE	
BY	
SURVEYED	
PLOTTED	
CHECKED	
NOTE BOOK	
NO. OF WAYS CHECKED	
CADD FILE NAME	
NO.	

PROFILE

DATE	
BY	
SURVEYED	
PLOTTED	
CHECKED	
NOTE BOOK	
NO. OF WAYS CHECKED	
STRUCTURE NOTATIONS CHKD	
NO.	



c:\projects\654196\654196\psandridge.dgn
 2/6/2004
 *REF 01