

F.A. RTE.	SECTION	COUNTY	TOTAL SHEETS	SHEET NO.
•	••	MASON	86	34

STA. 175+00 TO STA. 185+00

FED. ROAD DIST. NO. ILLINOIS FED. AID PROJECT

• PARK ROADS

•• SAND RIDGE STATE FOREST INTERNAL ROADS 2004



EXIST. CURVE PSC19  
 PI STA. = 178+21.61  
 $\Delta = 25^\circ 16' 10''$  (LT)  
 $D = 24^\circ 01' 41''$   
 $R = 238.45'$   
 $T = 53.45'$   
 $L = 105.17'$   
 $E = 5.92'$   
 P.C. STA. = 177+68.15  
 P.T. STA. = 178+73.32

STA 176+70.00 (0° SKEW)  
 PR PIPE CULV 18" x 30"  
 TY 1, CS/AA  
 15' LT DSFL = 494.63  
 15' LT USFL = 494.74  
 2 - PRC FL END SEC, 18" (STD 542301)

EXIST. CURVE 102  
 PI STA. = 300+51.29  
 $\Delta = 62^\circ 05' 47''$  (RT)  
 $D = 114^\circ 35' 30''$   
 $R = 50.00'$   
 $T = 30.10'$   
 $L = 54.19'$   
 $E = 8.36'$   
 P.C. STA. = 300+21.19  
 P.T. STA. = 300+75.38

EXIST. CURVE R635  
 PI STA. = 302+59.64  
 $\Delta = 21^\circ 36' 10''$  (LT)  
 $D = 14^\circ 51' 12''$   
 $R = 385.74'$   
 $T = 73.59'$   
 $L = 145.44'$   
 $E = 6.96'$   
 P.C. STA. = 301+86.04  
 P.T. STA. = 303+31.48

EXIST. CURVE R636  
 PI STA. = 307+35.87  
 $\Delta = 25^\circ 26' 58''$  (RT)  
 $D = 13^\circ 08' 37''$   
 $R = 435.93'$   
 $T = 98.44'$   
 $L = 193.63'$   
 $E = 10.98'$   
 P.C. STA. = 306+37.43  
 P.T. STA. = 308+31.06

EXIST. CURVE 643  
 PI STA. = 358+60.10  
 $\Delta = 40^\circ 11' 48''$  (LT)  
 $D = 31^\circ 18' 20''$   
 $R = 183.02'$   
 $T = 66.97'$   
 $L = 128.40'$   
 $E = 11.87'$   
 $e = N.C.$   
 P.C. STA. = 357+93.13  
 P.T. STA. = 359+21.53

EXIST. CURVE 642  
 PI STA. = 357+68.71  
 $\Delta = 83^\circ 55' 05''$  (LT)  
 $D = 132^\circ 42' 11''$   
 $R = 43.18'$   
 $T = 38.82'$   
 $L = 63.24'$   
 $E = 14.89'$   
 $e = N.C.$   
 P.C. STA. = 357+29.89  
 P.T. STA. = 357+93.12

EXIST. CURVE 644  
 PI STA. = 359+79.12  
 $\Delta = 63^\circ 32' 23''$  (LT)  
 $D = 91^\circ 58' 17''$   
 $R = 62.30'$   
 $T = 38.58'$   
 $L = 69.09'$   
 $E = 10.98'$   
 $e = N.C.$   
 P.C. STA. = 359+40.54  
 P.T. STA. = 360+09.63

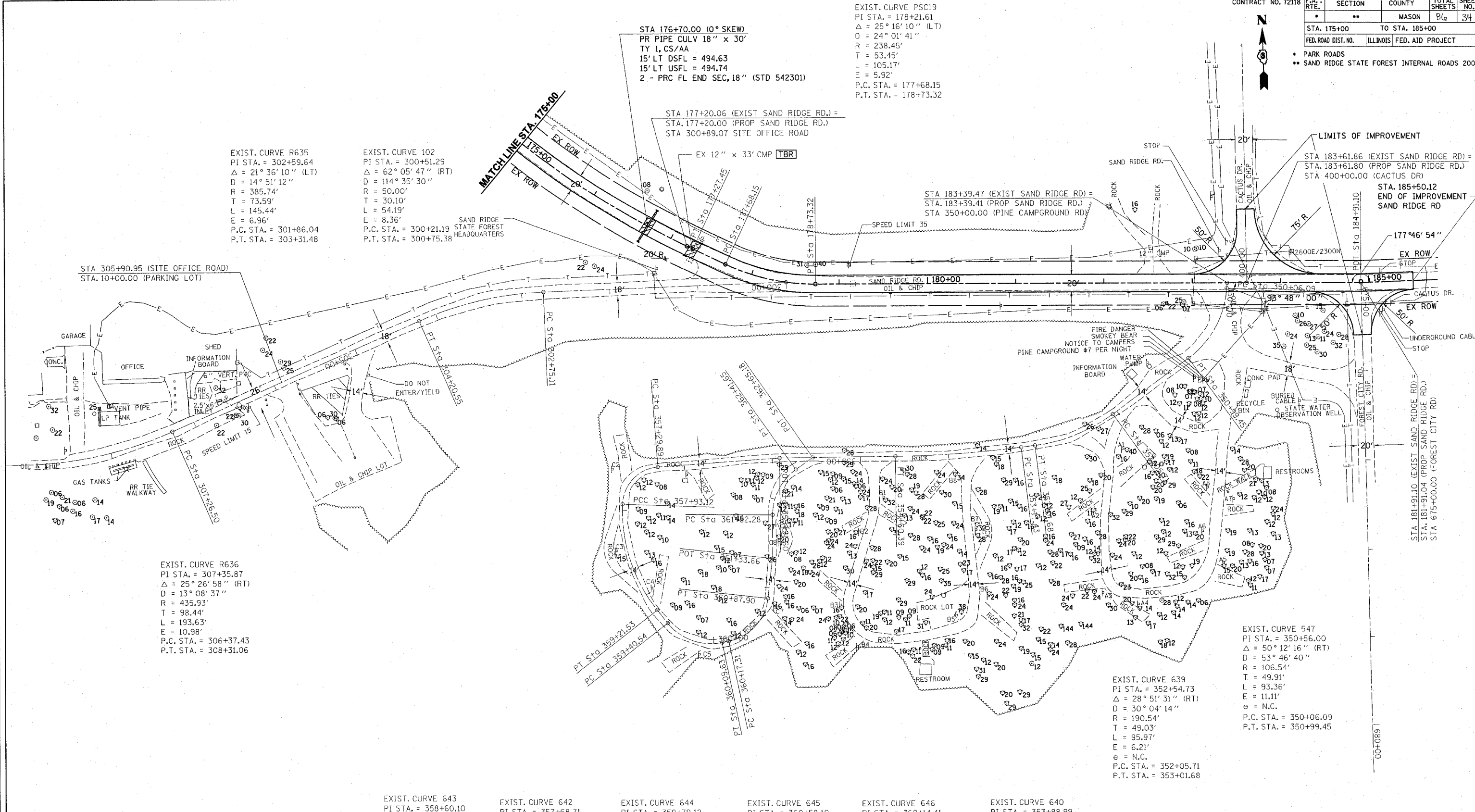
EXIST. CURVE 645  
 PI STA. = 360+58.10  
 $\Delta = 71^\circ 51' 21''$  (LT)  
 $D = 101^\circ 47' 52''$   
 $R = 56.28'$   
 $T = 40.78'$   
 $L = 70.59'$   
 $E = 13.22'$   
 $e = N.C.$   
 P.C. STA. = 360+17.31  
 P.T. STA. = 360+87.90

EXIST. CURVE 646  
 PI STA. = 362+14.41  
 $\Delta = 54^\circ 20' 18''$  (RT)  
 $D = 91^\circ 31' 58''$   
 $R = 62.60'$   
 $T = 32.13'$   
 $L = 59.37'$   
 $E = 7.76'$   
 $e = N.C.$   
 P.C. STA. = 361+82.28  
 P.T. STA. = 362+41.65

EXIST. CURVE 640  
 PI STA. = 353+88.99  
 $\Delta = 6^\circ 29' 06''$  (RT)  
 $D = 4^\circ 32' 10''$   
 $R = 1,263.11'$   
 $T = 71.56'$   
 $L = 142.96'$   
 $E = 2.03'$   
 $e = N.C.$   
 P.C. STA. = 353+17.43  
 P.T. STA. = 354+60.39

EXIST. CURVE 639  
 PI STA. = 352+54.73  
 $\Delta = 28^\circ 51' 31''$  (RT)  
 $D = 30^\circ 04' 14''$   
 $R = 190.54'$   
 $T = 49.03'$   
 $L = 95.97'$   
 $E = 6.21'$   
 $e = N.C.$   
 P.C. STA. = 352+05.71  
 P.T. STA. = 353+01.68

EXIST. CURVE 547  
 PI STA. = 350+56.00  
 $\Delta = 50^\circ 12' 16''$  (RT)  
 $D = 53^\circ 46' 40''$   
 $R = 106.54'$   
 $T = 49.91'$   
 $L = 93.36'$   
 $E = 11.11'$   
 $e = N.C.$   
 P.C. STA. = 350+06.09  
 P.T. STA. = 350+99.45



REVISIONS	
NAME	DATE

ILLINOIS DEPARTMENT OF TRANSPORTATION

**SAND RIDGE ROAD**

SCALE: VERT. HORIZ.  
 DATE: \_\_\_\_\_

DRAWN BY: \_\_\_\_\_  
 CHECKED BY: \_\_\_\_\_

c:\projects\4654196\p&psandridge.dgn  
 2/6/2004  
 -REF01