



36" X 36"
SIGN

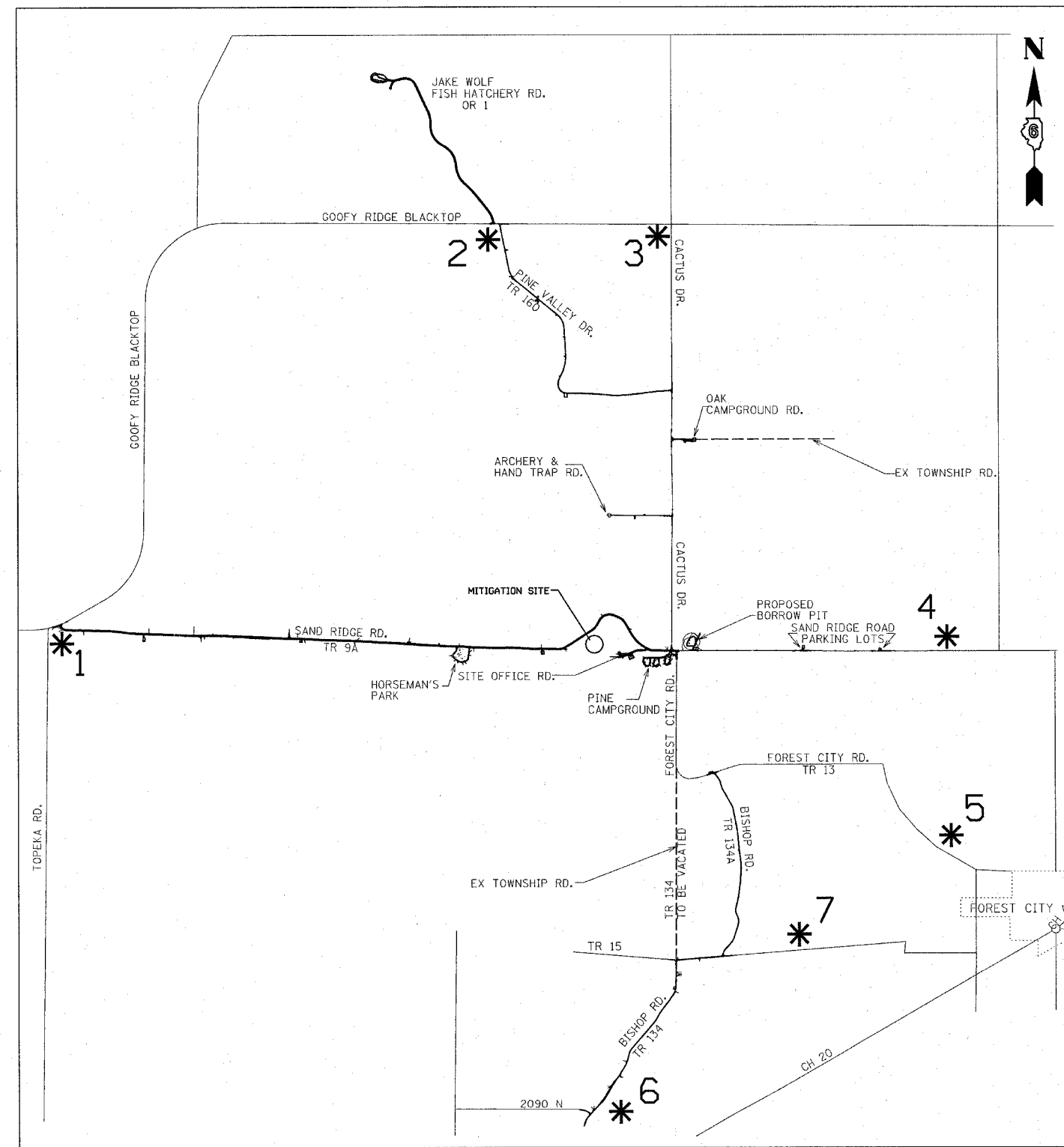
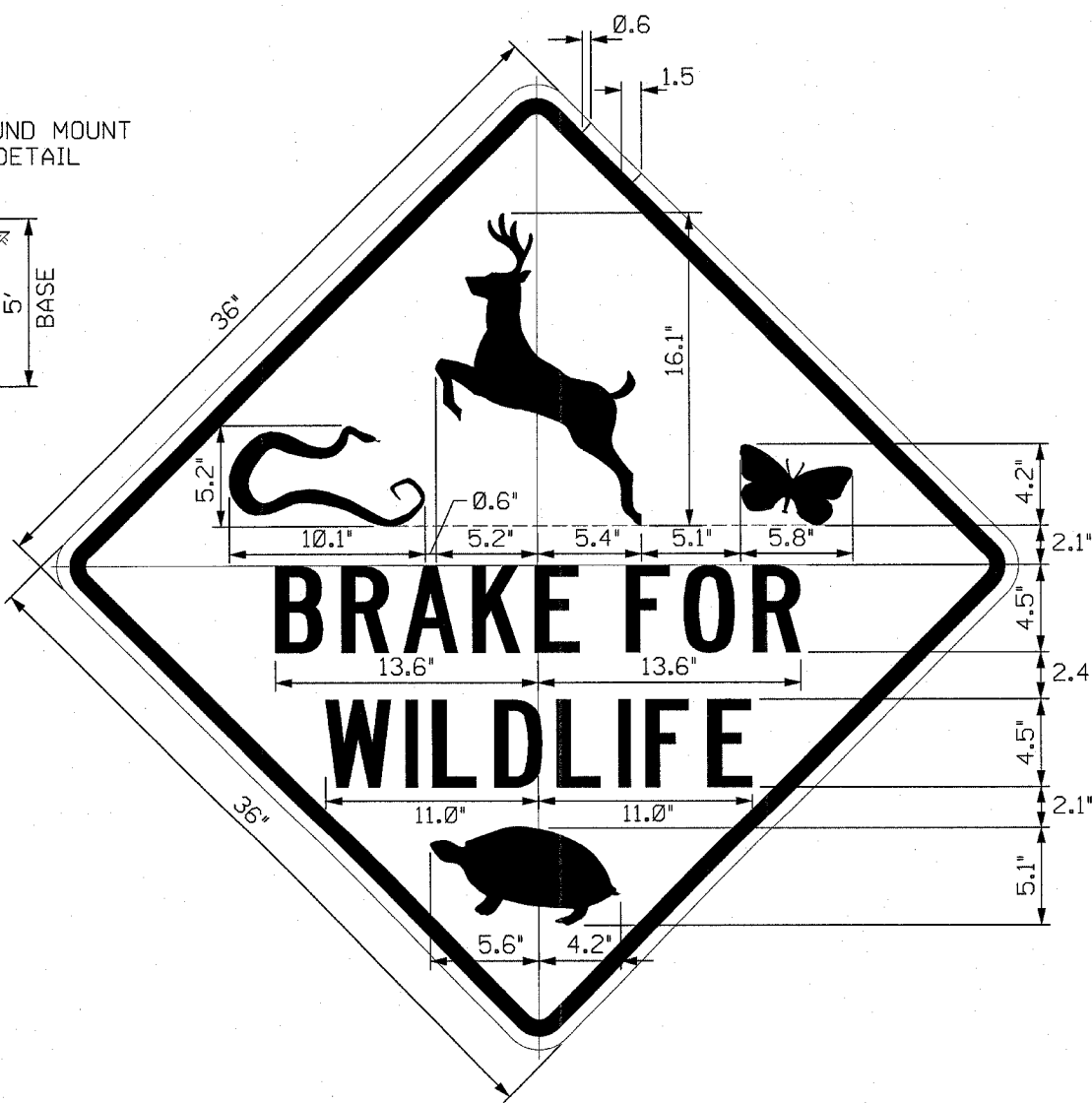
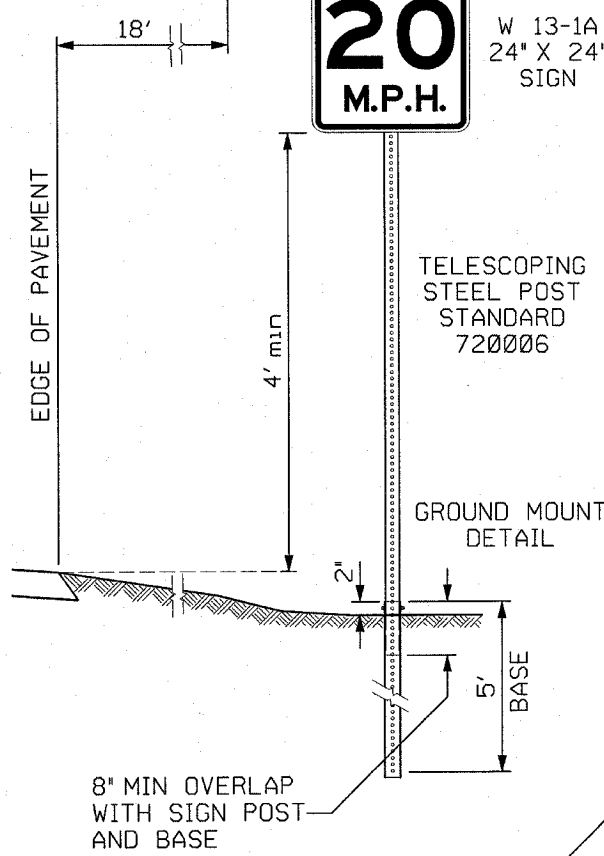


W 13-1A
24" X 24"
SIGN

LETTER SIZES & SPACING

4.5"	B R A K E F O R														
SERIES C	2.46	0.95	2.46	0.75	2.81	0.75	2.46	0.75	2.25	2.46	2.25	0.75	2.60	0.95	2.46
	INCHES														

4.5"	W I L D L I F E														
SERIES C	3.38	0.75	0.63	0.75	2.25	0.95	2.46	0.75	2.25	0.95	0.63	0.75	2.25	0.95	2.25
	INCHES														



* "BRAKE FOR WILDLIFE" SIGN LOCATIONS

NOTE: LOCATIONS OF SIGNS SHOWN SHALL CORRESPOND TO ENTRANCES OF SAND RIDGE STATE FOREST.

REVISIONS	
NAME	DATE

ILLINOIS DEPARTMENT OF TRANSPORTATION

"BRAKE FOR WILDLIFE" SIGN LOCATIONS

SAND RIDGE STATE FOREST

SCALE: VERT. _____
HORIZ. _____

DATE _____

DRAWN BY _____
CHECKED BY _____