

72A08

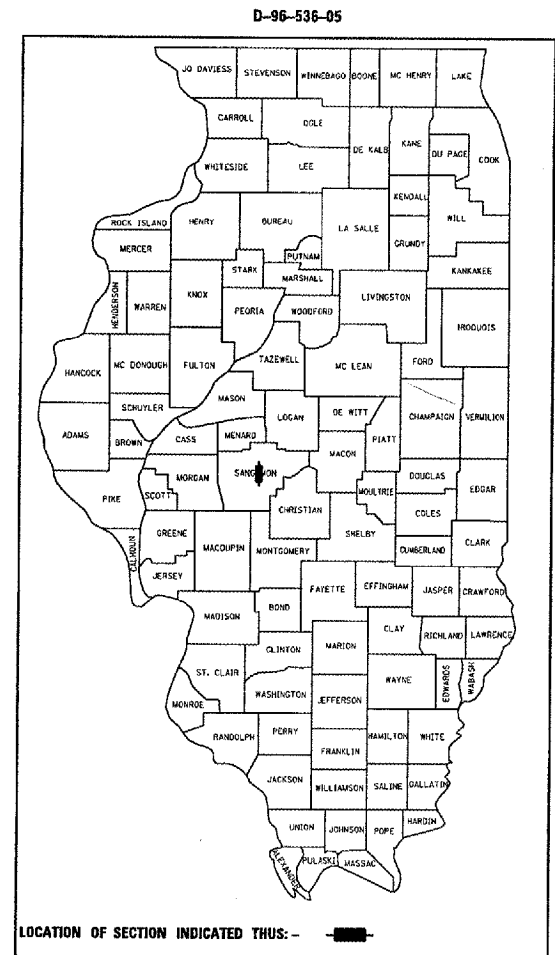
F.A.I. RTE.	SECTION	COUNTY	TOTAL SHEETS	SHEET NO.
55	(84-4(B-1))	SANGAMON	8	1

FOR INDEX OF SHEETS, SEE SHEET NO. 2

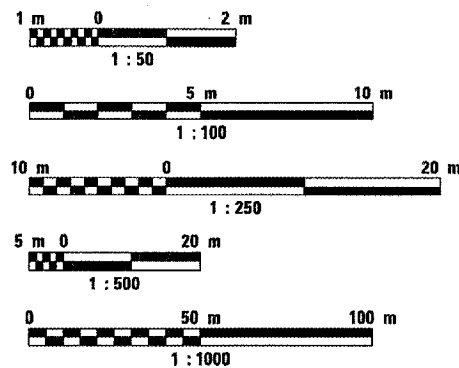
FOR LIST OF STANDARDS, SEE SHEET NO. 2

STATE OF ILLINOIS
DEPARTMENT OF TRANSPORTATION
DIVISION OF HIGHWAYS
**PROPOSED
HIGHWAY PLANS**

FAI ROUTE 55 (I-55)
SECTION 84-4(B-1)
SANGAMON COUNTY
C-96-513-06
PROJECT



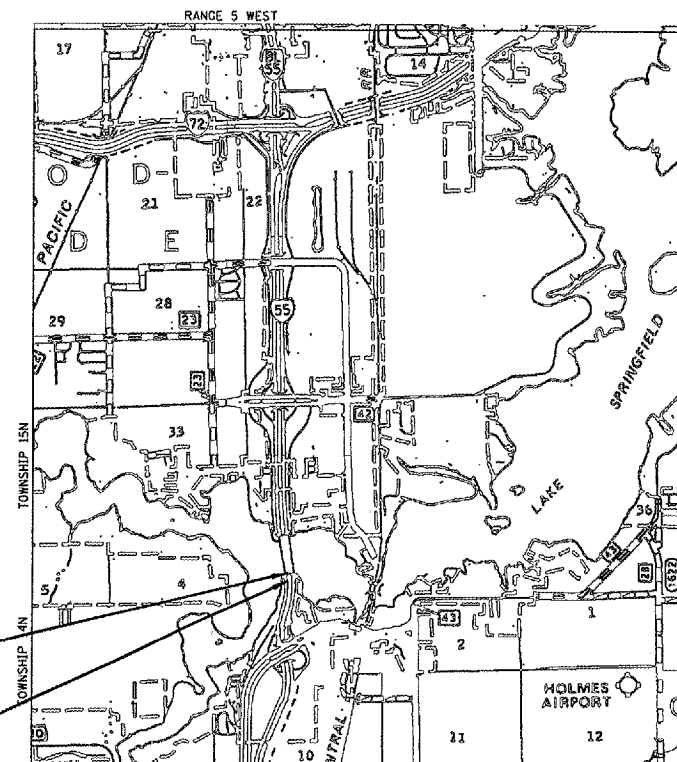
METRIC RATIOS



FULL SIZE PLANS HAVE BEEN PREPARED USING STANDARD ENGINEERING SCALES. REDUCED SIZED PLANS WILL NOT CONFORM TO STANDARD SCALES. IN MAKING MEASUREMENTS ON REDUCED PLANS, THE ABOVE SCALES MAY BE USED.

J.U.L.I.E.
JOINT UTILITY LOCATION INFORMATION FOR EXCAVATION
1-800-892-0123

CONTRACT NO. 72A08



END SECTION
STA. 143+519.335

BEGIN SECTION
STA. 143+367



LENGTH OF SECTION

NET LENGTH OF SECTION 84-4(B-1) 152.64 METERS 0.15264 KM

ADT (2003)
40,800
% MU + SU = 20%

STATE OF ILLINOIS
DEPARTMENT OF TRANSPORTATION
DIVISION OF HIGHWAYS

SUBMITTED May 27, 2005
Chris M. Reed
DISTRICT ENGINEER

July 1, 2005
Mike Hene
ENGINEER OF DESIGN AND ENVIRONMENT

July 1, 2005
Victor Mader
DIRECTOR, DIVISION OF HIGHWAYS

**PRINTED BY THE AUTHORITY
OF THE STATE OF ILLINOIS**

PROJECT ENGINEER: JOHN NEEGANGARD 782-6990
SQUAD LEADER: VINCE MADONIA 785-9046