

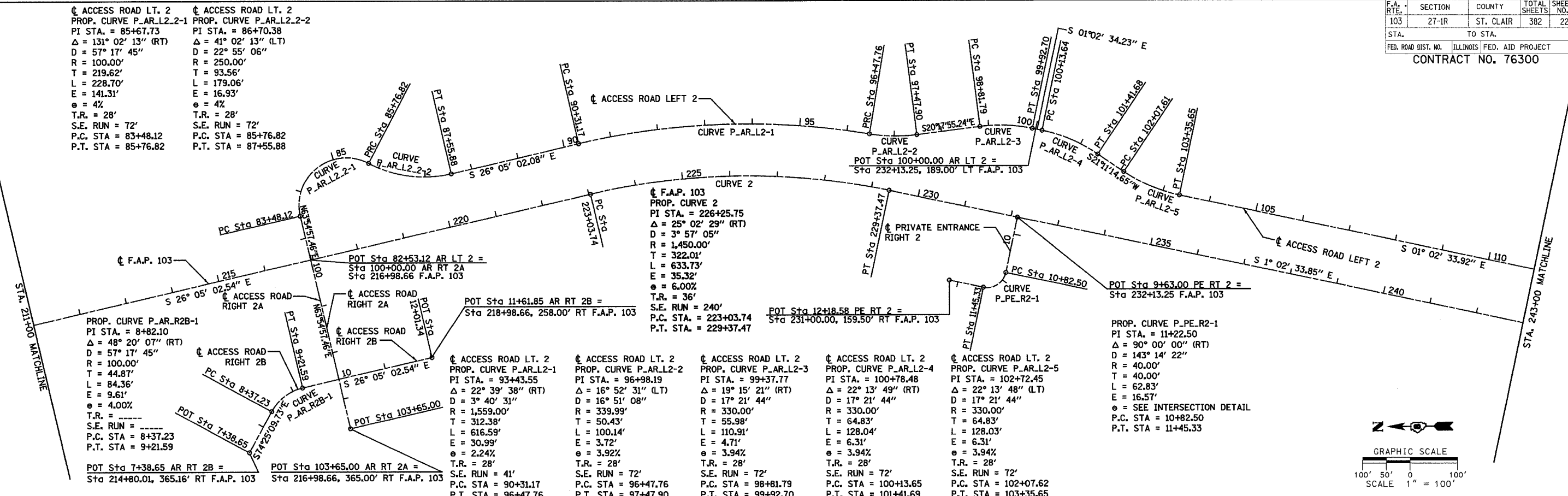
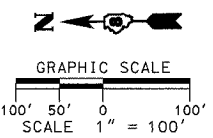
F.A. RTE.	SECTION	COUNTY	TOTAL SHEETS	SHEET NO.
103	27-1R	ST. CLAIR	382	22
STA.		TO STA.		
FED. ROAD DIST. NO.		ILLINOIS FED. AID PROJECT		
CONTRACT NO. 76300				

ACCESS ROAD LT. 2
 PROP. CURVE P_AR.L2.2-1
 PI STA. = 85+67.73
 Δ = 131° 02' 13" (RT)
 D = 57° 17' 45"
 R = 100.00'
 T = 219.62'
 L = 228.70'
 E = 141.31'
 e = 4%
 T.R. = 28'
 S.E. RUN = 72'
 P.C. STA = 83+48.12
 P.T. STA = 85+76.82

ACCESS ROAD LT. 2
 PROP. CURVE P_AR.L2.2-2
 PI STA. = 86+70.38
 Δ = 41° 02' 13" (LT)
 D = 22° 55' 06"
 R = 250.00'
 T = 93.56'
 L = 179.06'
 E = 16.93'
 e = 4%
 T.R. = 28'
 S.E. RUN = 72'
 P.C. STA = 85+76.82
 P.T. STA = 87+55.88

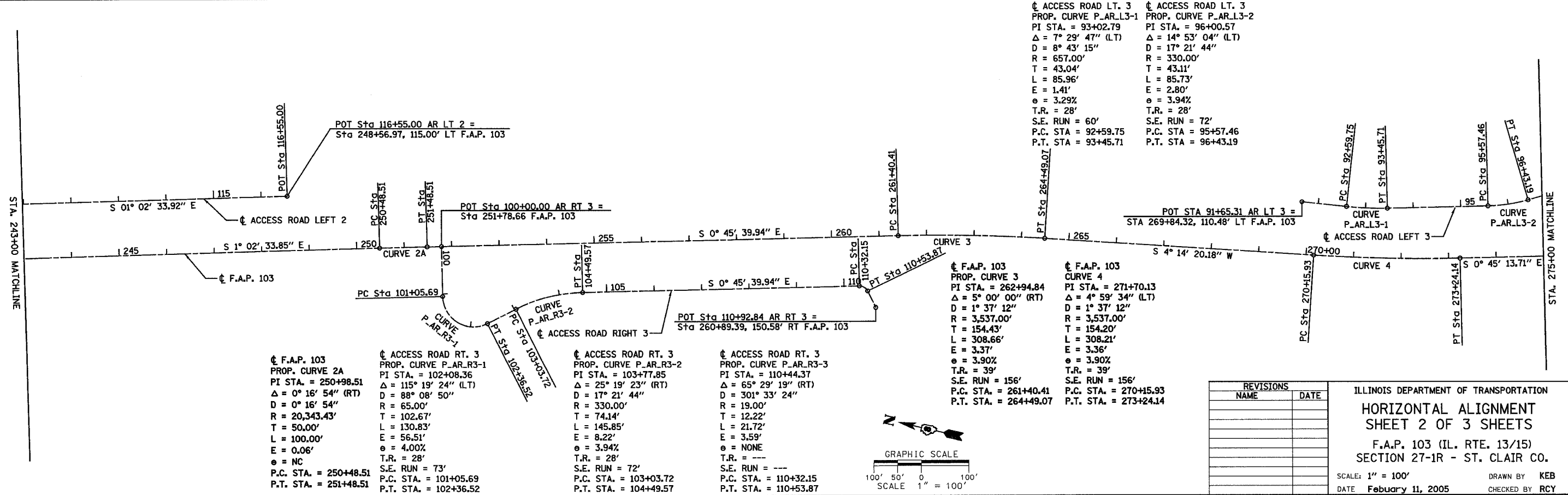
F.A.P. 103
 PROP. CURVE 2
 PI STA. = 226+25.75
 Δ = 25° 02' 29" (RT)
 D = 3° 57' 05"
 R = 1,450.00'
 T = 322.01'
 L = 633.73'
 E = 35.32'
 e = 6.00%
 T.R. = 36'
 S.E. RUN = 240'
 P.C. STA. = 223+03.74
 P.T. STA. = 229+37.47

PROP. CURVE P_PE.R2-1
 PI STA. = 11+22.50
 Δ = 90° 00' 00" (RT)
 D = 143° 14' 22"
 R = 40.00'
 T = 40.00'
 L = 62.83'
 E = 16.57'
 e = SEE INTERSECTION DETAIL
 P.C. STA = 10+82.50
 P.T. STA = 11+45.33



DATE	
BY	
PLAN	
REVISIONS	
NO.	

DATE	
BY	
PLAN	
REVISIONS	
NO.	



F.A.P. 103
 PROP. CURVE 2A
 PI STA. = 250+98.51
 Δ = 0° 16' 54" (RT)
 D = 0° 16' 54"
 R = 20,343.43'
 T = 50.00'
 L = 100.00'
 E = 0.06'
 e = NC
 T.R. = 28'
 S.E. RUN = 73'
 P.C. STA. = 250+48.51
 P.T. STA. = 251+48.51

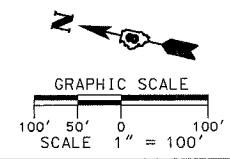
ACCESS ROAD RT. 3
 PROP. CURVE P_AR.R3-1
 PI STA. = 102+08.36
 Δ = 115° 19' 24" (LT)
 D = 88° 08' 50"
 R = 65.00'
 T = 102.67'
 L = 130.83'
 E = 56.51'
 e = 4.00%
 T.R. = 28'
 S.E. RUN = 73'
 P.C. STA. = 101+05.69
 P.T. STA. = 102+36.52

ACCESS ROAD RT. 3
 PROP. CURVE P_AR.R3-2
 PI STA. = 103+77.85
 Δ = 25° 19' 23" (RT)
 D = 17° 21' 44"
 R = 330.00'
 T = 74.14'
 L = 145.85'
 E = 8.22'
 e = 3.94%
 T.R. = 28'
 S.E. RUN = 72'
 P.C. STA. = 103+03.72
 P.T. STA. = 104+49.57

ACCESS ROAD RT. 3
 PROP. CURVE P_AR.R3-3
 PI STA. = 110+44.37
 Δ = 65° 29' 19" (RT)
 D = 301° 33' 24"
 R = 19.00'
 T = 12.22'
 L = 21.72'
 E = 3.59'
 e = NONE
 T.R. = ---
 S.E. RUN = ---
 P.C. STA. = 110+32.15
 P.T. STA. = 110+53.87

F.A.P. 103
 PROP. CURVE 3
 PI STA. = 262+94.84
 Δ = 5° 00' 00" (RT)
 D = 1° 37' 12"
 R = 3,537.00'
 T = 154.43'
 L = 308.66'
 E = 3.37'
 e = 3.90%
 T.R. = 39'
 S.E. RUN = 156'
 P.C. STA. = 261+40.41
 P.T. STA. = 264+49.07

F.A.P. 103
 PROP. CURVE 4
 PI STA. = 271+70.13
 Δ = 4° 59' 34" (LT)
 D = 1° 37' 12"
 R = 3,537.00'
 T = 154.20'
 L = 308.21'
 E = 3.36'
 e = 3.90%
 T.R. = 39'
 S.E. RUN = 156'
 P.C. STA. = 270+15.93
 P.T. STA. = 273+24.14



REVISIONS	DATE

ILLINOIS DEPARTMENT OF TRANSPORTATION
HORIZONTAL ALIGNMENT
SHEET 2 OF 3 SHEETS
 F.A.P. 103 (IL. RTE. 13/15)
 SECTION 27-1R - ST. CLAIR CO.
 SCALE: 1" = 100'
 DATE **February 11, 2005**
 DRAWN BY **KEB**
 CHECKED BY **RCY**

I:\2005\020508\0000\010\plan\horiz_align_03_2.dgn 3/9/2005 9:46:02 AM