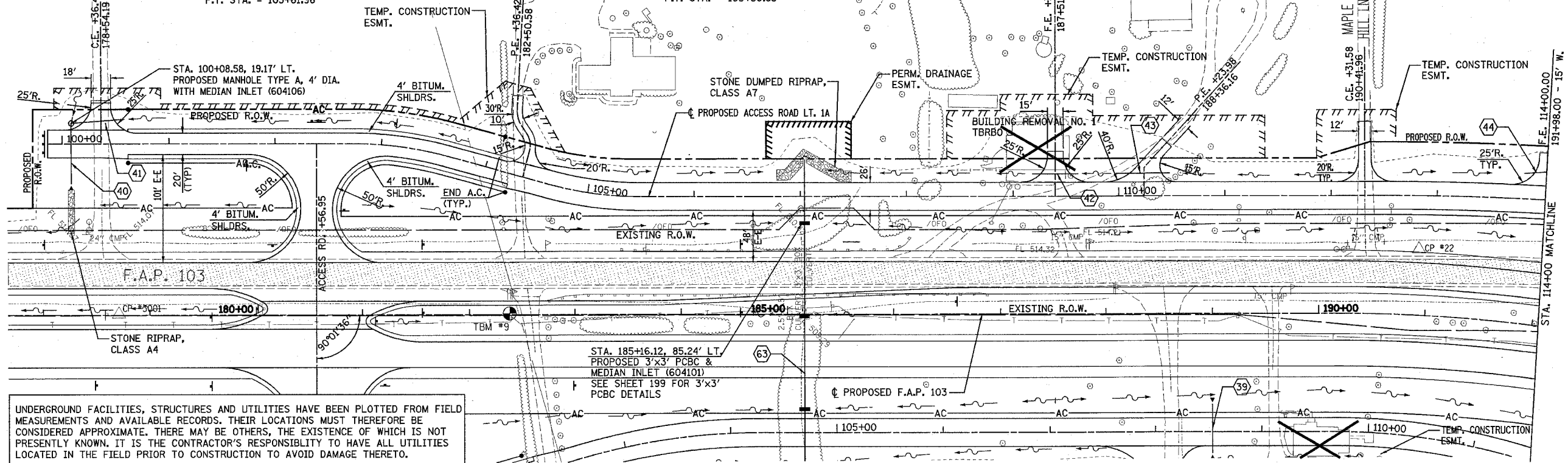


F.A.P. RTE.	SECTION	COUNTY	TOTAL SHEETS	SHEET NO.
103	27-1R	ST. CLAIR	382	46
STA. 100+00.00		TO STA. 114+00.00		
FED. ROAD DIST. NO.		ILLINOIS FED. AID PROJECT		
CONTRACT NO. 76300				

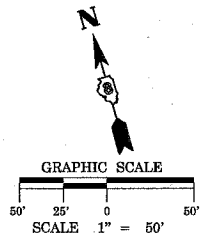
PROP. CURVE P.AR.L1A-1
 PI STA. = 103+18.23
 $\Delta = 15^\circ 16' 32''$ (RT)
 $D = 17^\circ 21' 44''$
 $R = 330.00'$
 $T = 44.25'$
 $L = 87.98'$
 $E = 2.95'$
 $e = 3.94\%$
 $T.R. = 28'$
 $S.E. RUN = 72'$
 $P.C. STA. = 102+73.98$
 $P.T. STA. = 103+61.96$

PROP. CURVE P.AR.L1A-2
 PI STA. = 105+07.03
 $\Delta = 15^\circ 18' 08''$ (LT)
 $D = 17^\circ 21' 44''$
 $R = 330.00'$
 $T = 44.33'$
 $L = 88.14'$
 $E = 2.96'$
 $e = 3.94\%$
 $T.R. = 28'$
 $S.E. RUN = 72'$
 $P.C. STA. = 104+62.69$
 $P.T. STA. = 105+50.83$

DENOTES EXISTING PAVEMENT

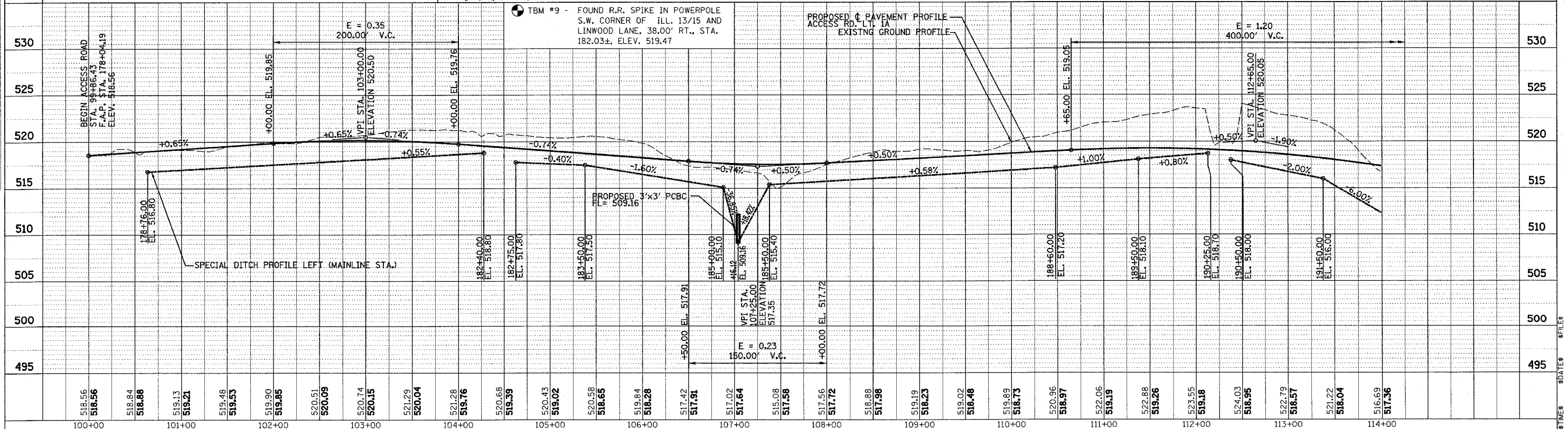


UNDERGROUND FACILITIES, STRUCTURES AND UTILITIES HAVE BEEN PLOTTED FROM FIELD MEASUREMENTS AND AVAILABLE RECORDS. THEIR LOCATIONS MUST THEREFORE BE CONSIDERED APPROXIMATE. THERE MAY BE OTHERS, THE EXISTENCE OF WHICH IS NOT PRESENTLY KNOWN. IT IS THE CONTRACTOR'S RESPONSIBILITY TO HAVE ALL UTILITIES LOCATED IN THE FIELD PRIOR TO CONSTRUCTION TO AVOID DAMAGE THERETO.



PLAN	SURVEYED	CHECKED	DATE
	NOTE BOOK	ALIGNED	
		BY	
		NO.	

PROFILE	SURVEYED	CHECKED	DATE
	NOTE BOOK	GRADES	
		BY	
		NO.	



PLAN & PROFILE - ACCESS ROAD LT. 1A