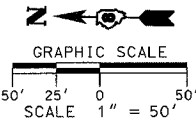
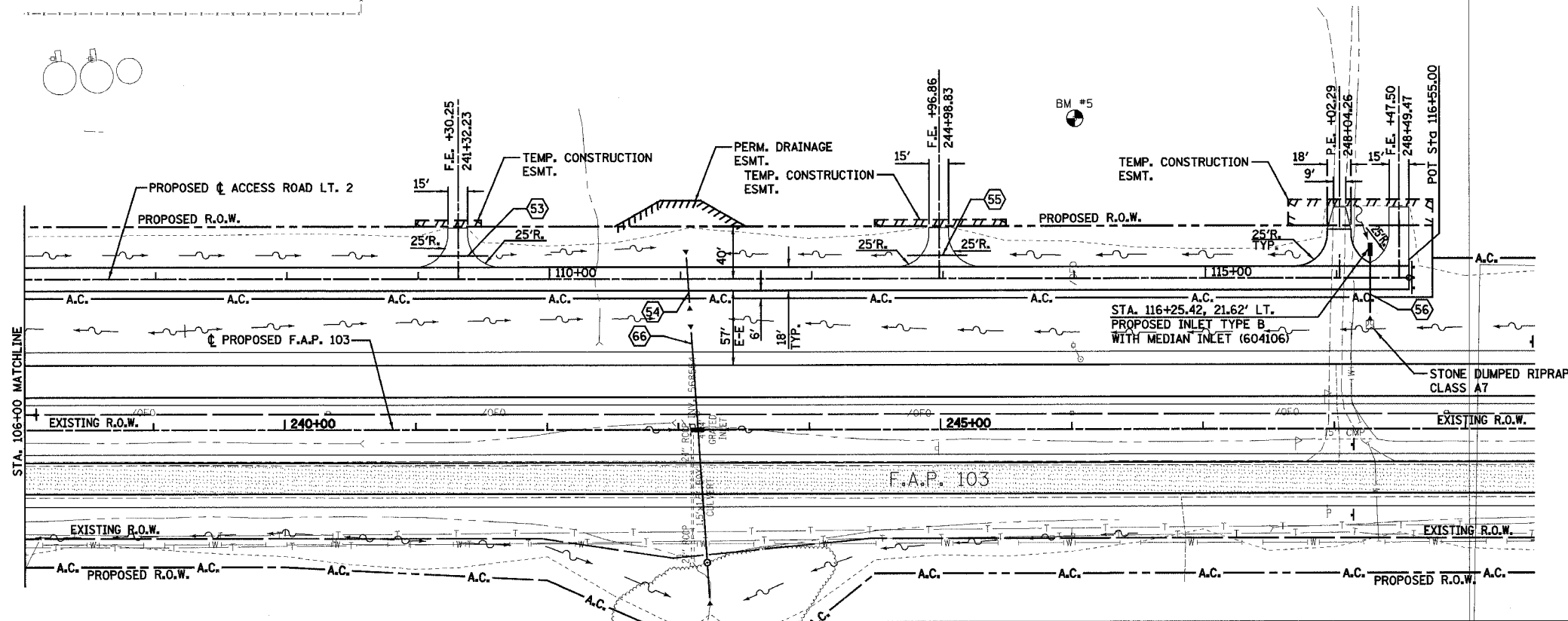
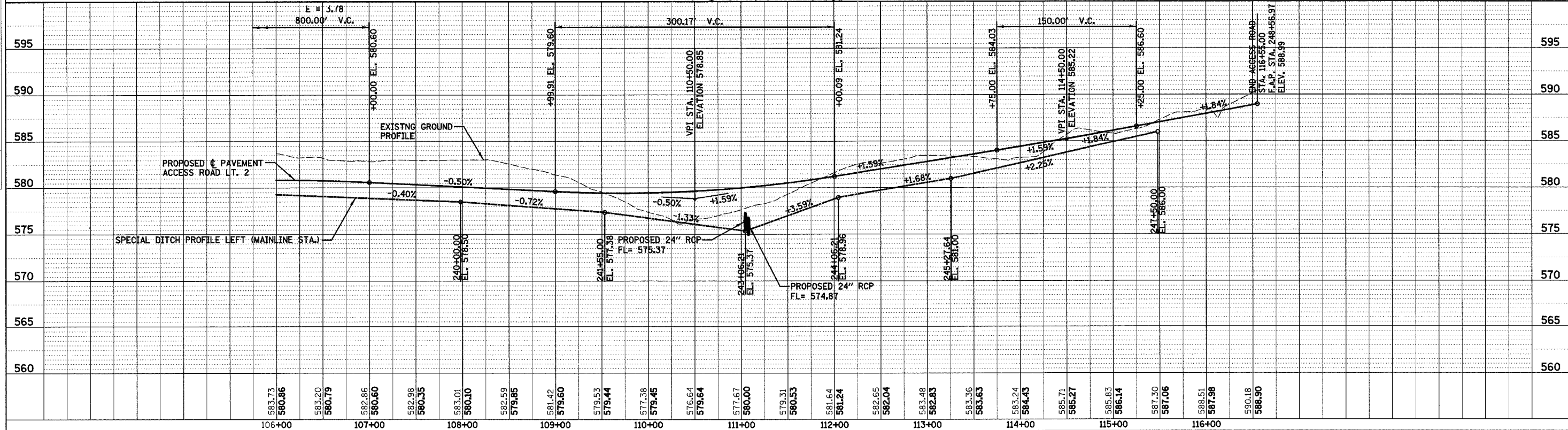


UNDERGROUND FACILITIES, STRUCTURES AND UTILITIES HAVE BEEN PLOTTED FROM FIELD MEASUREMENTS AND AVAILABLE RECORDS. THEIR LOCATIONS MUST THEREFORE BE CONSIDERED APPROXIMATE. THERE MAY BE OTHERS, THE EXISTENCE OF WHICH IS NOT PRESENTLY KNOWN. IT IS THE CONTRACTOR'S RESPONSIBILITY TO HAVE ALL UTILITIES LOCATED IN THE FIELD PRIOR TO CONSTRUCTION TO AVOID DAMAGE THERETO.

F.A.P. RTE.	SECTION	COUNTY	TOTAL SHEETS	SHEET NO.
103	27-1R	ST. CLAIR	382	50A
STA.	101+00.00	TO STA.	116+55.00	
FED. ROAD DIST. NO.	ILLINOIS	FED. AID PROJECT		
CONTRACT NO. 76300				



DENOTES EXISTING PAVEMENT



PLAN	SURVEYED	BY	DATE
	NOTED		
	CHECKED		
	DATE		

PROFILE	SURVEYED	BY	DATE
	NOTED		
	CHECKED		
	DATE		

PLAN & PROFILE - ACCESS ROAD LT. 2