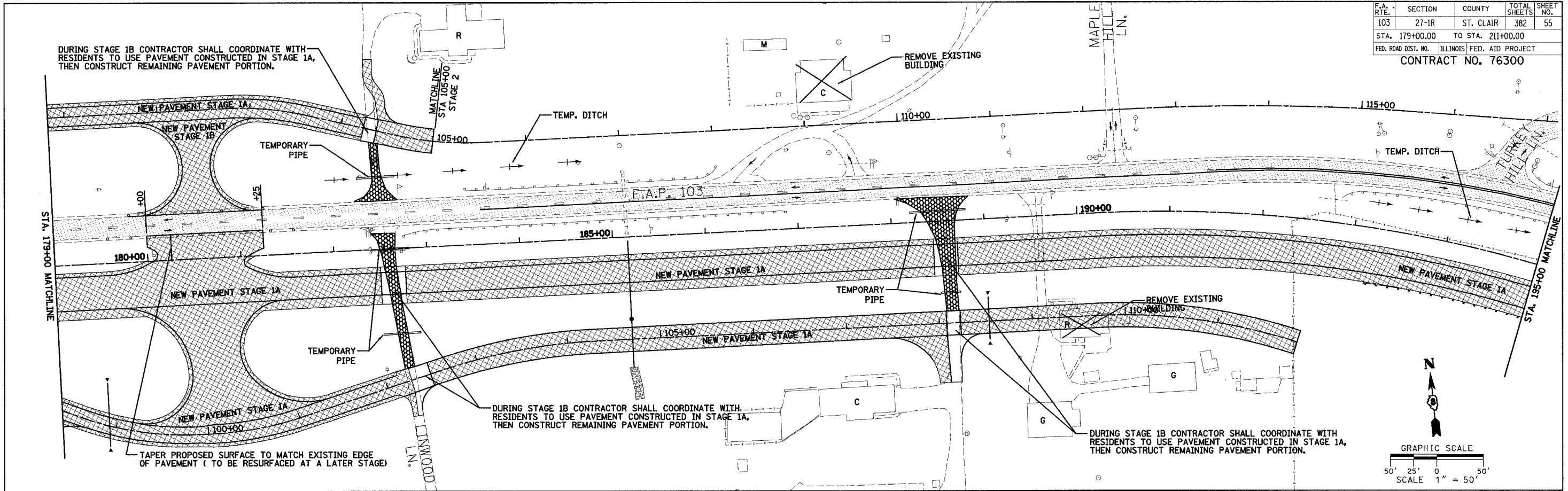
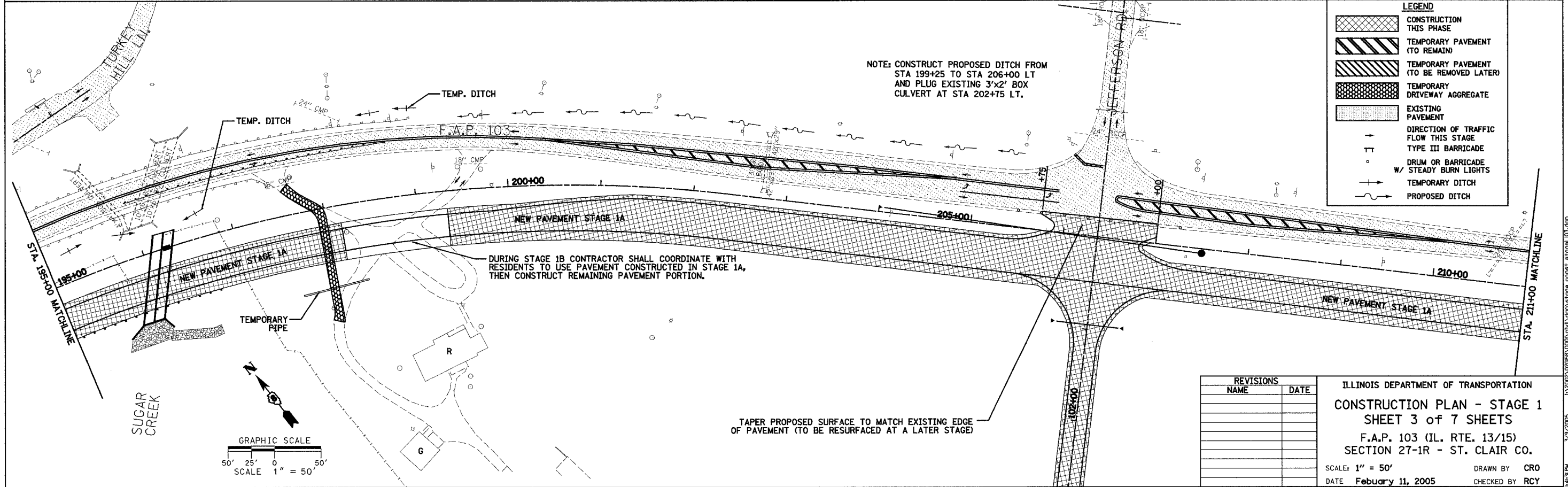


F.A.P. RTE.	SECTION	COUNTY	TOTAL SHEETS	SHEET NO.
103	27-1R	ST. CLAIR	382	55
STA. 179+00.00		TO STA. 211+00.00		
FED. ROAD DIST. NO.		ILLINOIS FED. AID PROJECT		
<b>CONTRACT NO. 76300</b>				

DATE	BY	REVISIONS
		1. PLOTTED
		2. CHECKED
		3. APPROVED
		4. DATE
		5. FILE NAME
		6. NO.



DATE	BY	REVISIONS
		1. PLOTTED
		2. CHECKED
		3. APPROVED
		4. DATE
		5. FILE NAME
		6. NO.

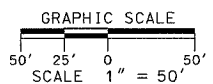


**LEGEND**

- [Cross-hatched pattern] CONSTRUCTION THIS PHASE
- [Diagonal lines /] TEMPORARY PAVEMENT (TO REMAIN)
- [Diagonal lines \] TEMPORARY PAVEMENT (TO BE REMOVED LATER)
- [Stippled pattern] TEMPORARY DRIVEWAY AGGREGATE
- [Dotted pattern] EXISTING PAVEMENT
- [Arrow] DIRECTION OF TRAFFIC FLOW THIS STAGE
- [T-shaped symbol] TYPE III BARRICADE
- [Circle with X] DRUM OR BARRICADE
- [Wavy line] STEADY BURN LIGHTS
- [Dashed line] TEMPORARY DITCH
- [Solid line] PROPOSED DITCH

REVISIONS	NAME	DATE

ILLINOIS DEPARTMENT OF TRANSPORTATION  
**CONSTRUCTION PLAN - STAGE 1**  
**SHEET 3 of 7 SHEETS**  
 F.A.P. 103 (IL. RTE. 13/15)  
 SECTION 27-1R - ST. CLAIR CO.  
 SCALE: 1" = 50'  
 DATE: February 11, 2005  
 DRAWN BY: CRO  
 CHECKED BY: RCY



1/20/2005 02:08:58 C:\0001\0001\0001\stage\_03.dgn  
 3/9/2005 14:31:54