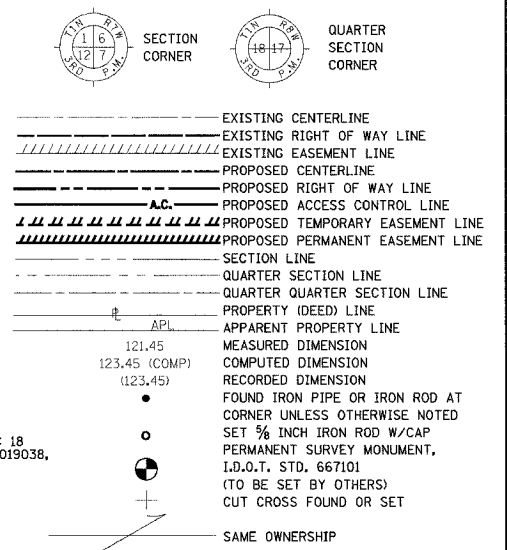


DIST.	SECTION	COUNTY	TOTAL SHEETS	SHEET NO.
103	27-1R	ST. CLAIR	382	155
STA. 297+30.20		TO STA. 313+20.37		
FED. ROAD DIST. NO.		ILLINOIS	FED. AID PROJECT	

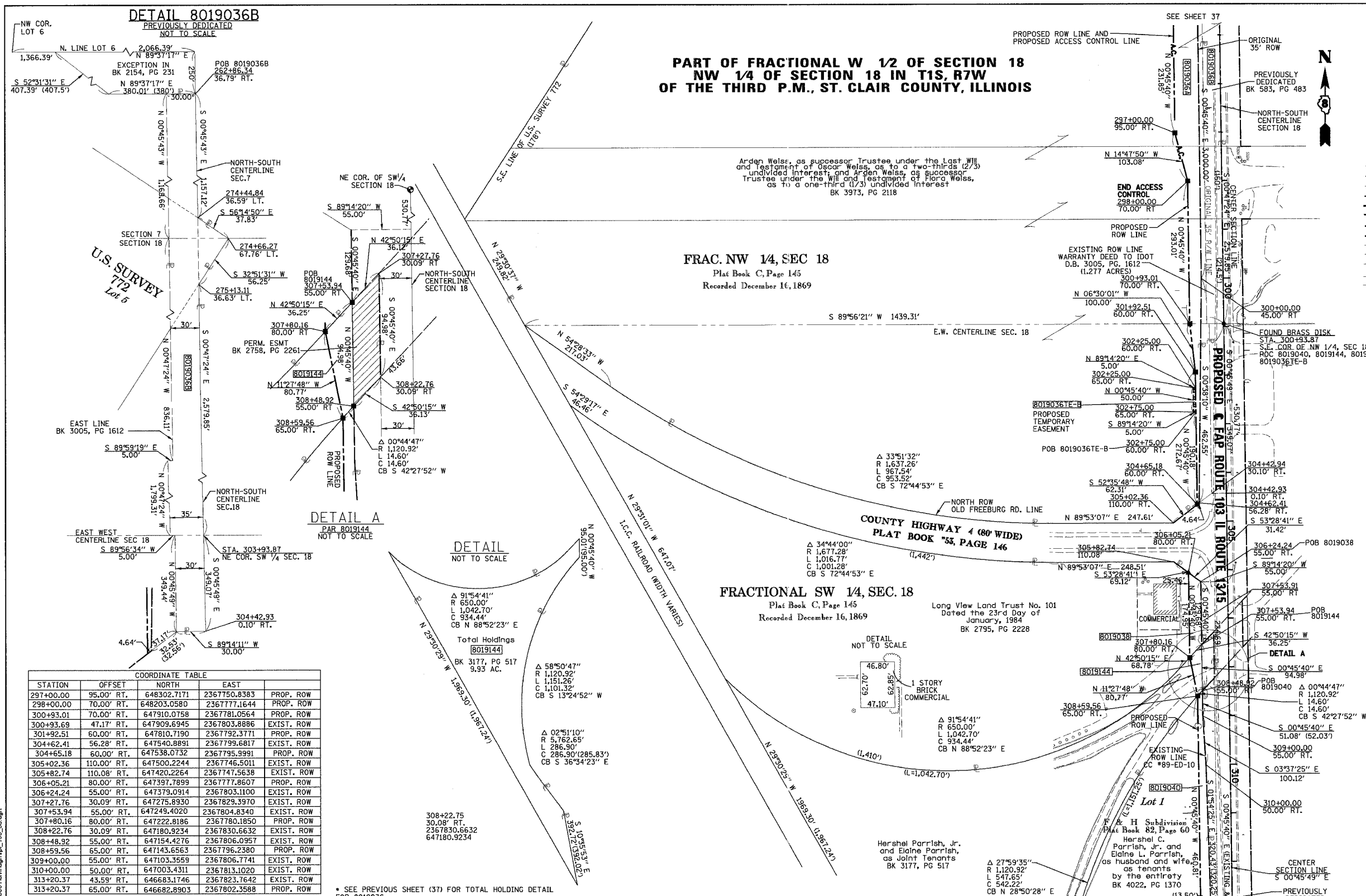
LEGEND



**PART OF FRACTIONAL W 1/2 OF SECTION 18
NW 1/4 OF SECTION 18 IN T1S, R7W
OF THE THIRD P.M., ST. CLAIR COUNTY, ILLINOIS**

FRAC. NW 1/4, SEC 18
Plat Book C, Page 145
Recorded December 16, 1869

FRACTIONAL SW 1/4, SEC. 18
Plat Book C, Page 145
Recorded December 16, 1869



COORDINATE TABLE

STATION	OFFSET	NORTH	EAST	PROP. ROW
297+00.00	95.00' RT.	648302.7171	2367750.8383	PROP. ROW
298+00.00	70.00' RT.	648203.0580	2367777.1644	PROP. ROW
300+93.01	70.00' RT.	647910.0758	2367781.0564	PROP. ROW
300+93.69	47.17' RT.	647909.6945	2367803.8886	EXIST. ROW
301+92.51	60.00' RT.	647810.7190	2367792.3771	PROP. ROW
304+62.41	56.28' RT.	647540.8891	2367799.6817	EXIST. ROW
304+65.18	60.00' RT.	647538.0732	2367795.9991	PROP. ROW
305+02.36	110.00' RT.	647500.2244	2367746.5011	EXIST. ROW
305+82.74	110.08' RT.	647420.2264	2367747.5638	EXIST. ROW
306+05.21	80.00' RT.	647397.7899	2367777.8607	PROP. ROW
306+24.24	55.00' RT.	647379.0914	2367803.1100	EXIST. ROW
307+27.76	30.09' RT.	647275.8930	2367829.3970	EXIST. ROW
307+53.94	55.00' RT.	647249.4020	2367804.8340	EXIST. ROW
307+80.16	80.00' RT.	647222.8186	2367780.1850	PROP. ROW
308+22.76	30.09' RT.	647180.9234	2367830.6632	EXIST. ROW
308+48.92	55.00' RT.	647154.4276	2367806.0957	EXIST. ROW
308+59.56	65.00' RT.	647143.6563	2367796.2380	PROP. ROW
309+00.00	55.00' RT.	647103.3559	2367806.7741	EXIST. ROW
310+00.00	50.00' RT.	647003.4311	2367813.1020	EXIST. ROW
313+20.37	43.59' RT.	646683.1746	2367823.7642	EXIST. ROW
313+20.37	65.00' RT.	646682.8903	2367802.3588	PROP. ROW

* SEE PREVIOUS SHEET (37) FOR TOTAL HOLDING DETAIL FOR 8019036

PARCEL NO.	OWNER	BOOK & PAGE	TOTAL HOLDING ACRES	FEE SIMPLE ACQUISITION				EASEMENTS				PERMANENT TAX NUMBER	PROPERTY ACQUIRED BY	
				GROSS ACRES	SO. FT.	PREVIOUSLY DEDICATED	NET	REMAINDER	PERMANENT	TEMPORARY	EASEMENT PURPOSE			
8019036	ARDEN WEISS, AS SUCCESSOR TRUSTEE UNDER THE LAST WILL AND TESTAMENT OF OSCAR WEISS, AS TO A TWO-THIRDS (2/3) UNDIVIDED INTEREST; AND ARDEN WEISS, AS SUCCESSOR TRUSTEE UNDER THE LAST WILL AND TESTAMENT OF FLORA WEISS, AS TO A ONE-THIRD (1/3) UNDIVIDED INTEREST TITLE REPORT NO. SC-2850, SC-2951	BK 3973 PG 2118	146.1059 ACRES	A=6.4589 B=3.0922	A=281,350 B=134,693	B=3.0922	B=134,693	A=6.4589 B=0	A=281,350 B=0	136.5548 ACRES	TE-A 0.1240 TE-B 0.0057	TE-A 5,400 TE-B 250	14-07-0-300-011 14-07-0-300-010 14-18-0-100-006 14-18-0-100-007 14-18-0-100-008 14-18-0-300-009	
8019038	LONG VIEW LAND TRUST NO. 101 DATED THE 23RD DAY OF JANUARY, 1984 TITLE REPORT NO. SC-2853	BK 2795 PG 1300	10.0872 ACRES	0.0874	3,808	N/A	N/A	0.0874	3,808	9.9998 ACRES	N/A	N/A	14-18-0-300-017	
8019144	HERSHEL PARRISH, JR. AND ELAINE PARRISH, AS JOINT TENANTS TITLE REPORT NO. SC-2854	BK 3177 PG 517	9.9304 ACRES	0.0925	4,031	0.0543	2,367	0.0382	1,664	9,8379 ACRES	N/A	N/A	14-18-0-300-030	
8019040	HERSHEL C. PARRISH, JR AND ELAINE L. PARRISH, AS HUSBAND AND WIFE, AS TENANTS BY THE ENTIRETY TITLE REPORT NO. SC-2854-2	BK 4022 PG 1370	1.7925 ACRES	0.1731	7,540	N/A	N/A	0.1731	7,540	1,6194 ACRES	N/A	N/A	14-18-0-300-022	

KUHLMANN DESIGN GROUP, INC.
15 E. WASHINGTON STREET
BELLEVILLE, ILLINOIS 62220
(618) 234-8898

ILLINOIS DEPARTMENT OF TRANSPORTATION
PLAT OF HIGHWAYS
FAP ROUTE 103 (IL RTE. 13/15)
SECTION 27-1R
ST. CLAIR COUNTY
JOB NO. R-98-019-00
STATION 305+82.74 TO STATION 313+20.37

SCALE 1" = 100'

SHEET 38 OF 68

ILLINOIS DEPARTMENT OF TRANSPORTATION
DIVISION OF HIGHWAYS-DISTRICT 8
1102 EASTPORT PLAZA DRIVE
COLLINSVILLE, ILLINOIS 62234-6198

3/9/2006 6:16:56 PM \\csm\plm\p103_38.dgn