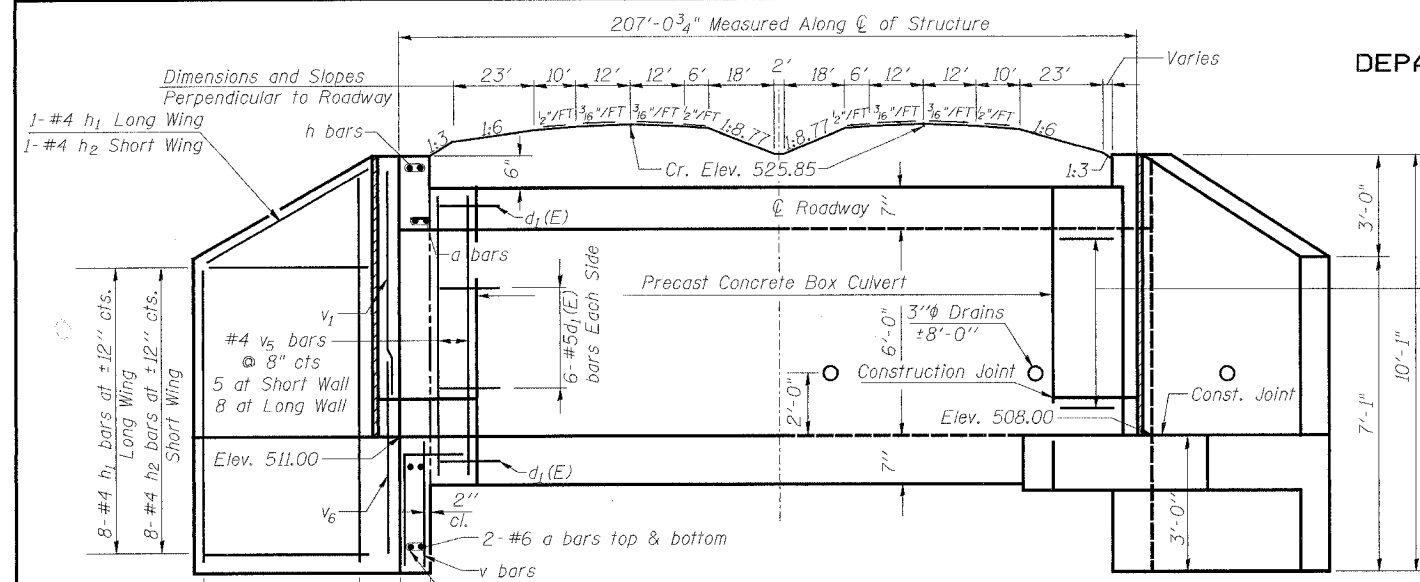
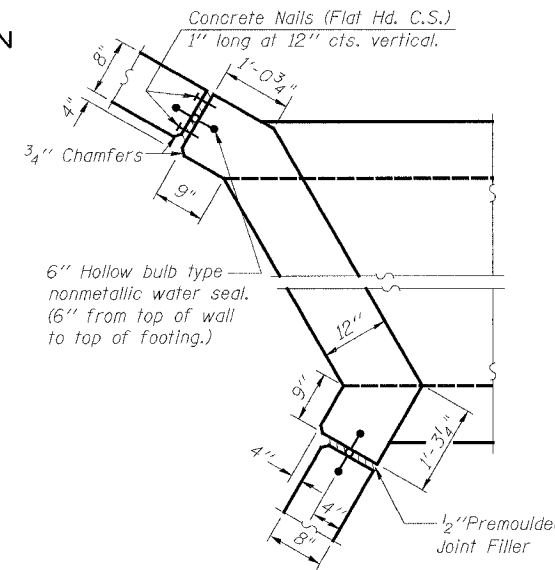


STATE OF ILLINOIS
DEPARTMENT OF TRANSPORTATION

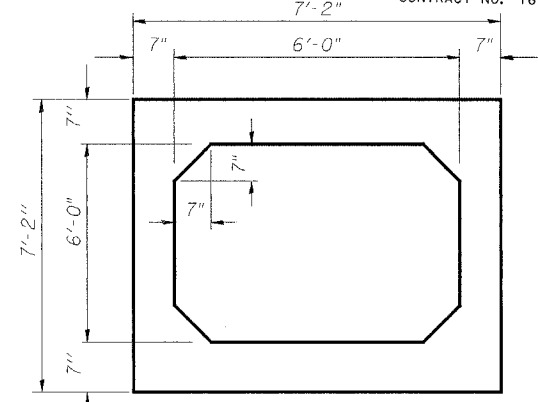
ROUTE NO.	SECTION	COUNTY	MILE	POST	SHEET NO. 1
F.A.P. 103	27-1R	ST. CLAIR	382	195	2 SHEETS
FED. ROAD DIST. NO. 7 ILLINOIS FED. AID PROJECT-					CONTRACT NO. 76300



HALF LONG. SECT. HALF ELEVATION



CORNER DETAIL

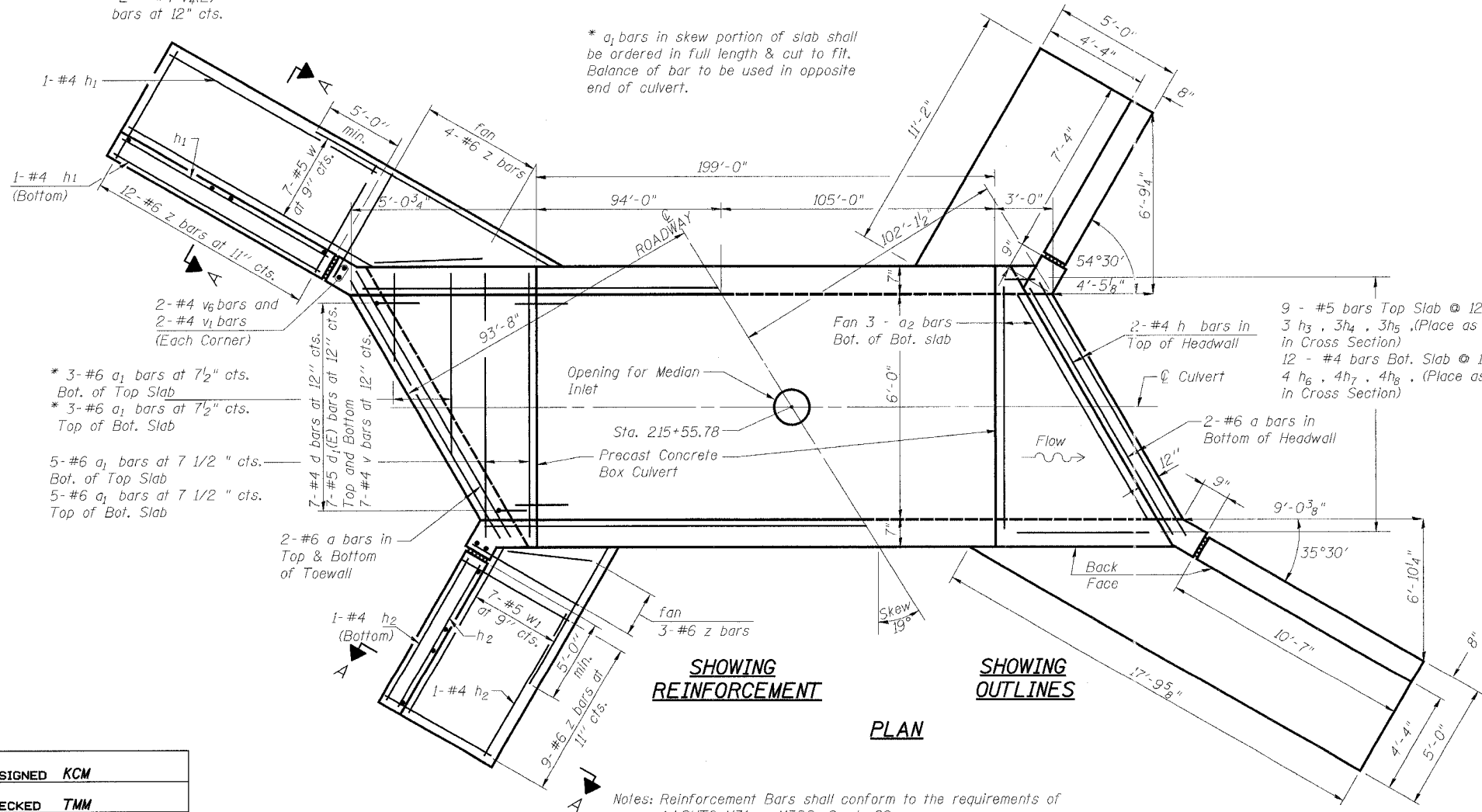


SECTION THRU BARREL (PRECAST)

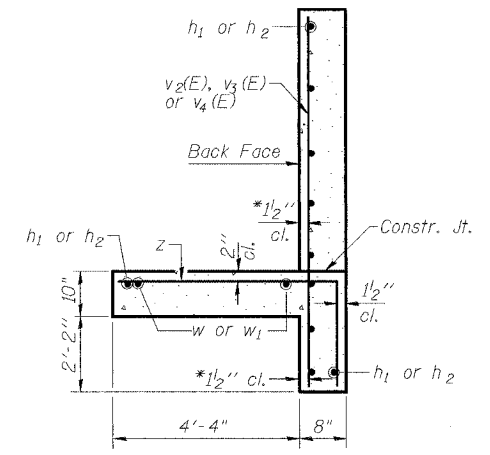
- Long Wing
4 - #4 v₂(E)
4 - #4 v₃(E)
3 - #4 v₄(E)
bars at 12" cts.
- Short Wing
3 - #4 v₂(E)
3 - #4 v₃(E)
2 - #4 v₄(E)
bars at 12" cts.

Dimensions at Rt. L's to \bar{C} Roadway

* a₁ bars in skew portion of slab shall be ordered in full length & cut to fit. Balance of bar to be used in opposite end of culvert.

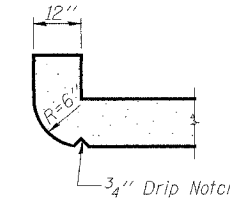


SHOWING REINFORCEMENT SHOWING OUTLINES
PLAN



SECTION A-A

* v bars shall not be placed more than 1 1/2 inch cl. from back face of wingwall.



SECTION THRU HEADWALL
(Up Stream End Only)

DESIGN STRESSES

- f_y = 60,000 psi
- f'c = 3,500 psi - cast in place
- f'c = 5,000 psi - precast
- Max. Soil Pressure under Footing = 2,655 psf

LOADING HS 20-44

Design Fill Height 10'-0"

SINGLE BOX CULVERT 6x6
IL ROUTE 13/15
F.A.P. ROUTE 103 SECTION 27-1R
ST. CLAIR COUNTY
STATION 215+55.78

DESIGNED	KCM
CHECKED	TMM
DRAWN	EJR
CHECKED	TMM