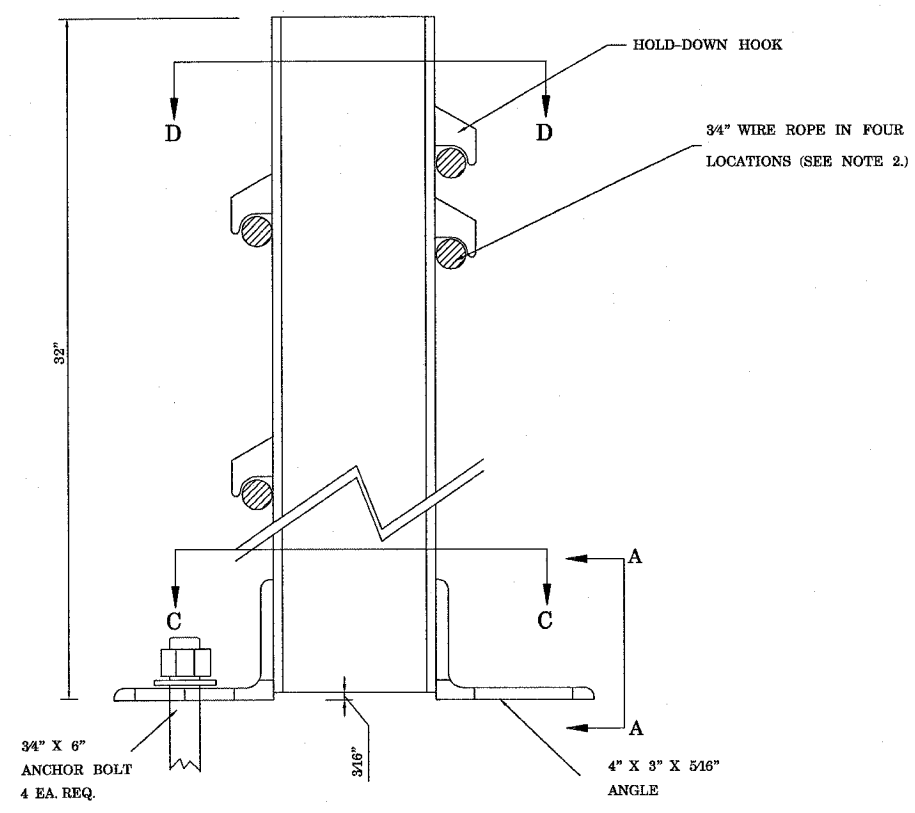
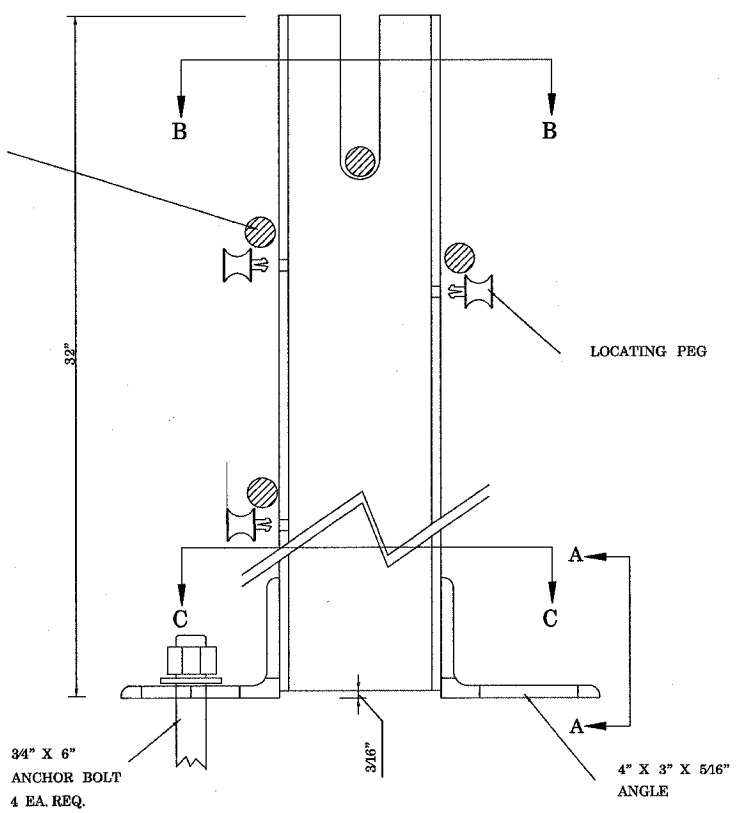


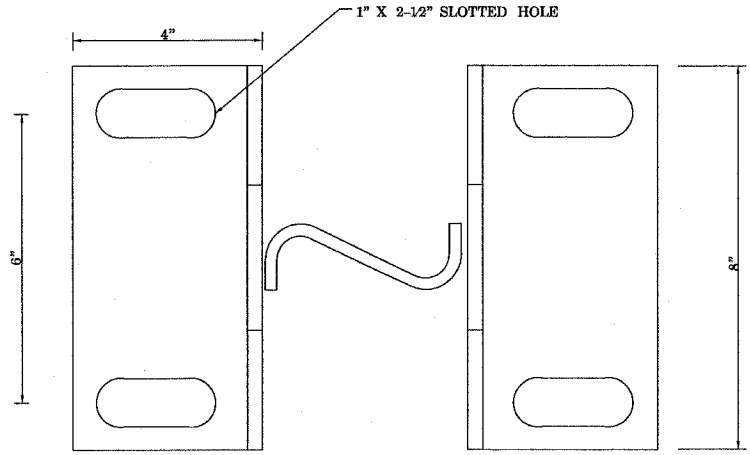
F.A.I. RTE.	SECTION	COUNTY	TOTAL SHEETS	SHEET NO.
55	60-1,211-2	MADISON	21	19
STA. 996+00		TO STA.1026+00		
FED. ROAD DIST. NO. 5 ILLINOIS FED. AID PROJECT				



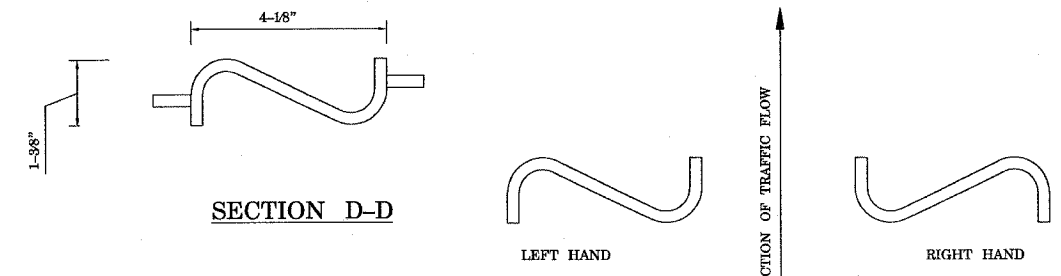
**HOLD-DOWN SURFACE MOUNT POST**  
(LEFT-HAND SHOWN)



**STANDARD SURFACE MOUNT POST**  
(LEFT-HAND SHOWN)



**SECTION C-C**

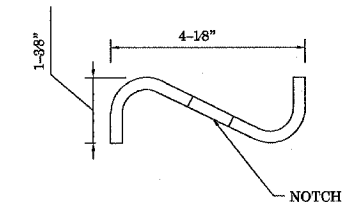


**SECTION D-D**

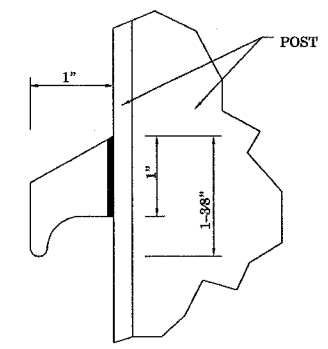
LEFT HAND      RIGHT HAND

DIRECTION OF TRAFFIC FLOW

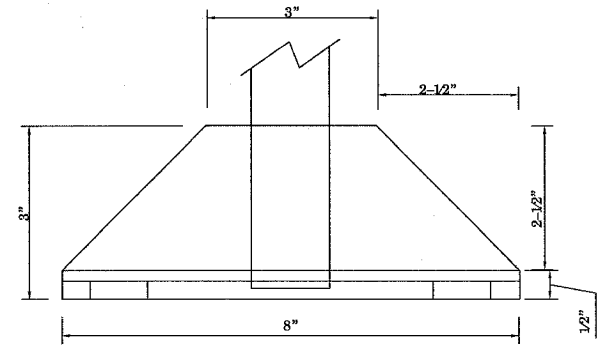
**POST ORIENTATION**



**SECTION B-B**



**HOLD-DOWN HOOK**



**SECTION A-A**

The information herein is proprietary to BRIFEN USA, and shall not be disclosed, duplicated or used otherwise without the express written consent of BRIFEN USA, Inc.

# BRIFEN★USA INC.

Revisions			SURFACE MOUNT POSTS (4-ROPES, TL-3)		
No.	Date	By	Date	Drawn By	Scale
1.	5.26.05	MW	5.17.05	Manita Workman	None
2.	6.21.05	MW			
3.	6.28.05	MW	Sheet No.		
4.					
5.			Dwg. No.	WRSF-05-207a	7 OF 9

PLOT DATE = 7/16/2005  
 FILE NAME = s:\p\c\j\m\m\081325\plan\081325.dgn  
 PLOT SCALE = 50.0000 / 1"  
 REFERENCE = BRIFEN

**NOTES:**

- ANCHOR BOLTS SHALL BE B7, GALVANIZED ALL-THREAD, SET INTO SURFACE WITH AN APPROVED EPOXY PER MANUFACTURER'S RECOMMENDATIONS. EACH BOLT TO HAVE ONE ASTM-194 GALVANIZED HS HEX NUT AND ONE GALVANIZED HARD ROUND FLAT ASTM-F436 WASHER.
- ROPE HEIGHTS PER BRIFEN USA DRAWING NO. 3, 4, OR 5 (TL-3 OR TL-4).
- DETAILS SHOWN ARE FOR 4-ROPES TL-3 SYSTEM. SIMILAR DESIGN USED FOR 3-ROPES TL-3 AND FOR TL-4 SYSTEMS (ROPE HEIGHTS & POST SIZE VARY).