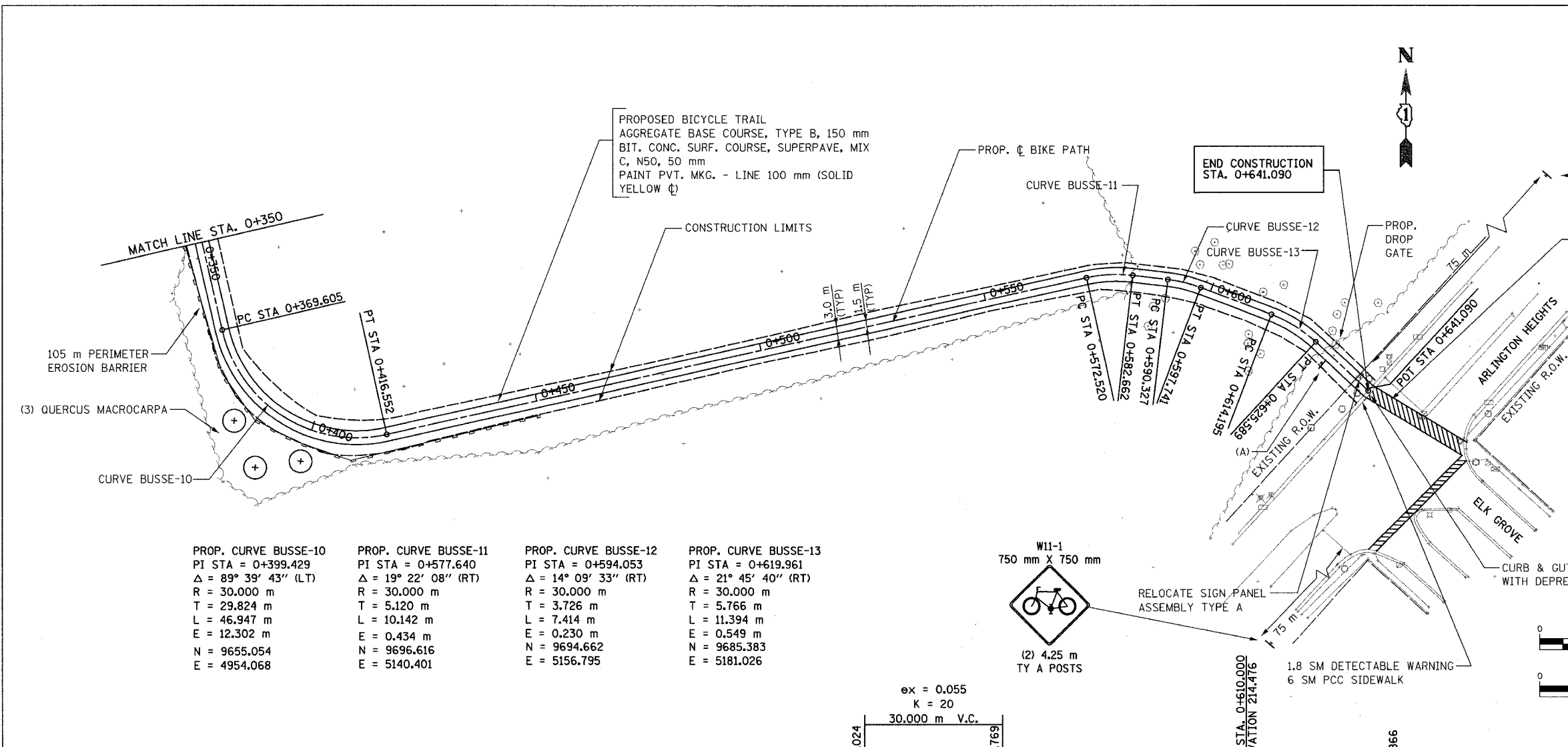
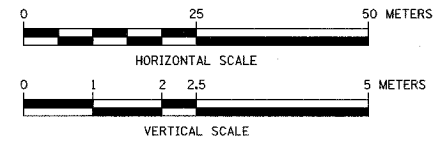
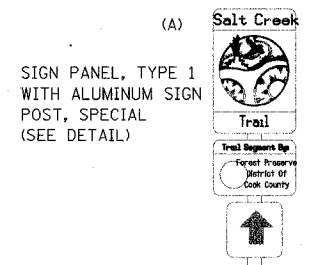


SECTION	COUNTY	TOTAL SHEETS	SHEET NO.
05-F3000-01-BT	COOK	92	10
STA. TO STA.			
IDOT PROJECT NO. CMM-8003(498)			
SALT CREEK GREENWAY TRAIL			

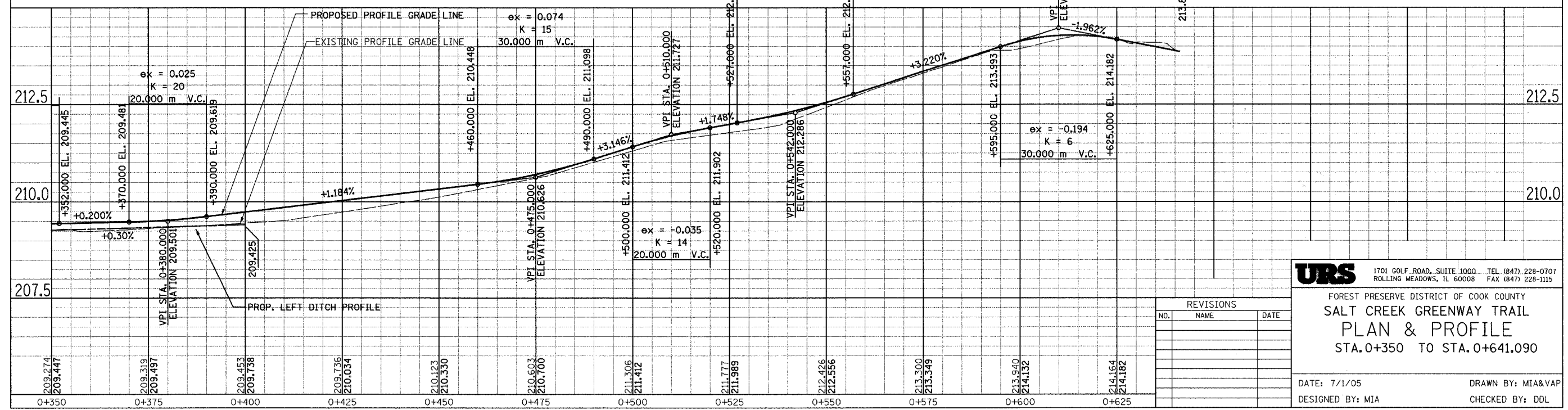
CONTRACT NO. 83667
W11-1
750 mm X 750 mm



(2) 4.25 m TY A POSTS



PROP. CURVE BUSSE-10	PROP. CURVE BUSSE-11	PROP. CURVE BUSSE-12	PROP. CURVE BUSSE-13
PI STA = 0+399.429	PI STA = 0+577.640	PI STA = 0+594.053	PI STA = 0+619.961
Δ = 89° 39' 43" (LT)	Δ = 19° 22' 08" (RT)	Δ = 14° 09' 33" (RT)	Δ = 21° 45' 40" (RT)
R = 30.000 m	R = 30.000 m	R = 30.000 m	R = 30.000 m
T = 29.824 m	T = 5.120 m	T = 3.726 m	T = 5.766 m
L = 46.947 m	L = 10.142 m	L = 7.414 m	L = 11.394 m
E = 12.302 m	E = 0.434 m	E = 0.230 m	E = 0.549 m
N = 9655.054	N = 9696.616	N = 9694.662	N = 9685.383
E = 4954.068	E = 5140.401	E = 5156.795	E = 5181.026



URS 1701 GOLF ROAD, SUITE 1000 TEL (847) 228-0707
ROLLING MEADOWS, IL 60008 FAX (847) 228-1115

FOREST PRESERVE DISTRICT OF COOK COUNTY
**SALT CREEK GREENWAY TRAIL
PLAN & PROFILE**
STA. 0+350 TO STA. 0+641.090

DATE: 7/1/05 DRAWN BY: MIA&VAP
DESIGNED BY: MIA CHECKED BY: DDL

REVISIONS		
NO.	NAME	DATE