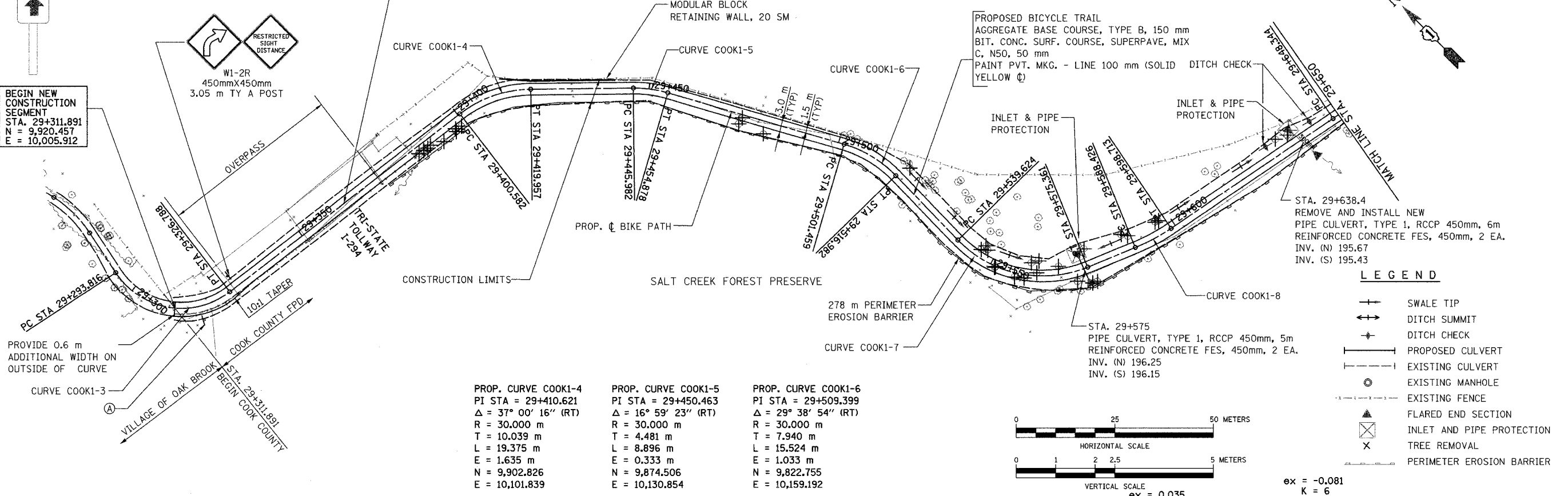




(A) SIGN PANEL, TYPE 1 WITH ALUMINUM SIGN POST, SPECIAL (SEE DETAIL)

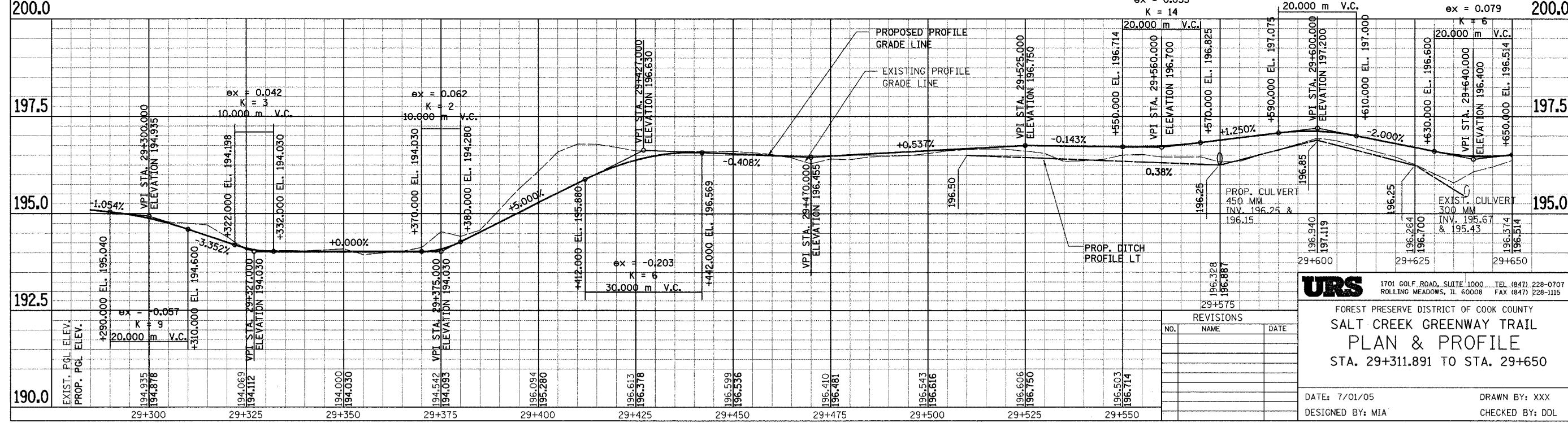
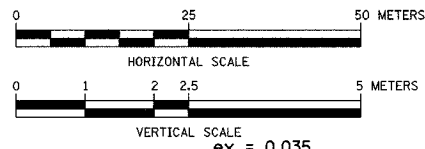
BEGIN NEW CONSTRUCTION SEGMENT  
STA. 29+311.891  
N = 9,920.457  
E = 10,005.912



SECTION	COUNTY	TOTAL SHEETS	SHEET NO.
05-F3000-01-BT	COOK	92	11
STA. TO STA.			
IDOT PROJECT NO. CMM-8003(498)			
SALT CREEK GREENWAY TRAIL			
CONTRACT NO. 83667			

**LEGEND**

- +— SWALE TIP
- +— DITCH SUMMIT
- +— DITCH CHECK
- +— PROPOSED CULVERT
- +— EXISTING CULVERT
- EXISTING MANHOLE
- +— EXISTING FENCE
- ▲ FLARED END SECTION
- ⊗ INLET AND PIPE PROTECTION
- ✕ TREE REMOVAL
- +— PERIMETER EROSION BARRIER



**REVISIONS**

NO.	NAME	DATE

**URS**  
1701 GOLF ROAD, SUITE 1000 TEL (847) 228-0707  
ROLLING MEADOWS, IL 60008 FAX (847) 228-1115

FOREST PRESERVE DISTRICT OF COOK COUNTY  
**SALT CREEK GREENWAY TRAIL  
PLAN & PROFILE**  
STA. 29+311.891 TO STA. 29+650

DATE: 7/01/05  
DESIGNED BY: MIA  
DRAWN BY: XXX  
CHECKED BY: DDL