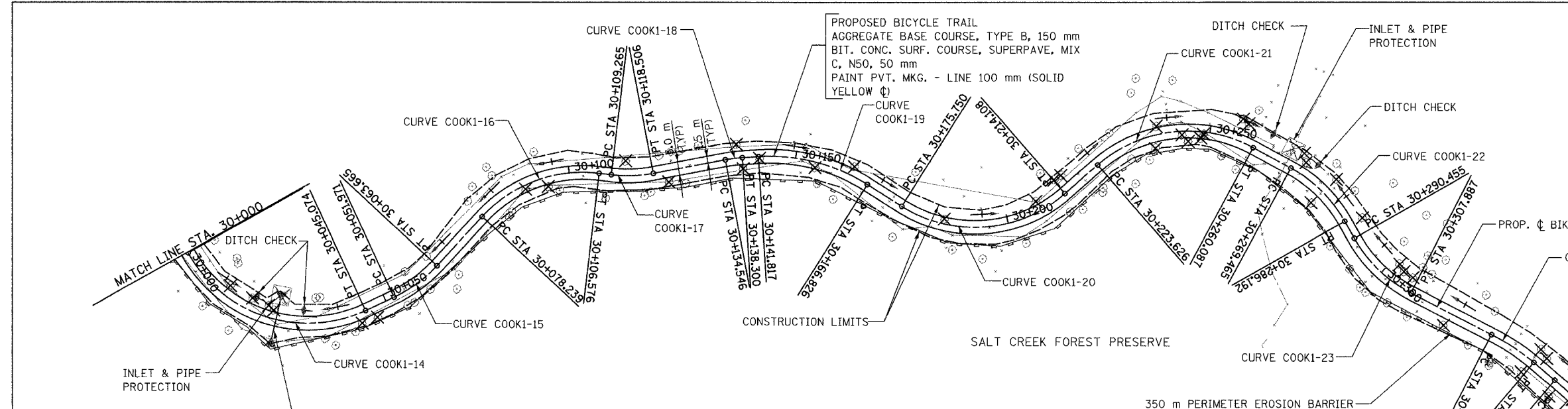
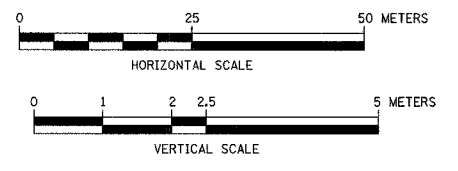


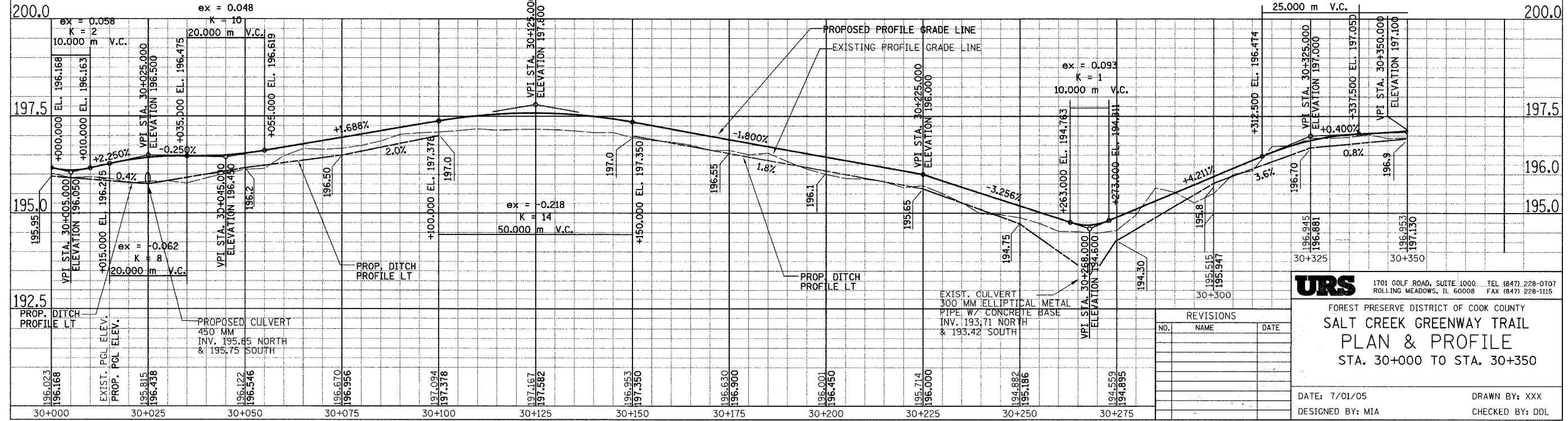
SECTION	COUNTY	TOTAL SHEETS	SHEET NO.
05-F3000-01-BT	COOK	92	13
STA. TO STA.			
IDOT PROJECT NO. CMM-8003(498)			
SALT CREEK GREENWAY TRAIL			
CONTRACT NO. 83667			



STA. 30+025 PIPE CULVERT, TYPE 1, RCCP 450mm, 8m REINFORCED CONCRETE FES, 450mm, 2 EA. INV. (N) 195.85 INV. (S) 195.75	<b>PROP. CURVE COOK1-14</b> PI STA = 30+028.030 $\Delta = 85^\circ 43' 51''$ (LT) R = 30.000 m T = 27.844 m L = 44.889 m E = 10.930 m N = 9,623.830 E = 10,581.703	<b>PROP. CURVE COOK1-15</b> PI STA = 30+057.893 $\Delta = 22^\circ 19' 58''$ (LT) R = 30.000 m T = 5.922 m L = 11.693 m E = 0.579 m N = 9,661.516 E = 10,599.973	<b>PROP. CURVE COOK1-16</b> PI STA = 30+093.564 $\Delta = 54^\circ 07' 11''$ (RT) R = 30.000 m T = 15.325 m L = 28.337 m E = 3.688 m N = 9,697.337 E = 10,599.801	<b>PROP. CURVE COOK1-17</b> PI STA = 30+113.922 $\Delta = 17^\circ 38' 59''$ (LT) R = 30.000 m T = 4.658 m L = 9.241 m E = 0.359 m N = 9,710.713 E = 10,618.107	<b>PROP. CURVE COOK1-18</b> PI STA = 30+136.426 $\Delta = 7^\circ 10' 12''$ (RT) R = 30.000 m T = 1.880 m L = 3.754 m E = 0.059 m N = 9,728.933 E = 10,631.440
<b>PROP. CURVE COOK1-19</b> PI STA = 30+154.746 $\Delta = 35^\circ 49' 23''$ (RT) R = 40.000 m T = 12.929 m L = 25.009 m E = 2.037 m N = 9,742.255 E = 10,644.022	<b>PROP. CURVE COOK1-20</b> PI STA = 30+198.054 $\Delta = 73^\circ 15' 35''$ (LT) R = 30.000 m T = 22.304 m L = 38.359 m E = 7.383 m N = 9,750.539 E = 10,687.394	<b>PROP. CURVE COOK1-21</b> PI STA = 30+244.490 $\Delta = 69^\circ 38' 08''$ (RT) R = 30.000 m T = 20.864 m L = 36.461 m E = 6.542 m N = 9,802.943 E = 10,692.836	<b>PROP. CURVE COOK1-22</b> PI STA = 30+278.052 $\Delta = 31^\circ 56' 49''$ (RT) R = 30.000 m T = 8.587 m L = 16.727 m E = 1.205 m N = 9,812.623 E = 10,730.440	<b>PROP. CURVE COOK1-23</b> PI STA = 30+299.425 $\Delta = 33^\circ 17' 32''$ (LT) R = 30.000 m T = 8.970 m L = 17.432 m E = 1.312 m N = 9,806.058 E = 10,751.248	<b>PROP. CURVE COOK1-24</b> PI STA = 30+333.281 $\Delta = 12^\circ 43' 28''$ (RT) R = 50.000 m T = 5.575 m L = 11.104 m E = 0.310 m N = 9,815.404 E = 10,784.317



$ex = 0.030$   
 $K = 26$   
 $ex = -0.119$  25 m V.C.  
 $K = 7$



REVISIONS		
NO.	NAME	DATE

**URS** 1701 GOLF ROAD, SUITE 1000 TEL (847) 228-0707  
 ROLLING MEADOWS, IL 60008 FAX (847) 228-1115  
 FOREST PRESERVE DISTRICT OF COOK COUNTY  
**SALT CREEK GREENWAY TRAIL**  
**PLAN & PROFILE**  
 STA. 30+000 TO STA. 30+350  
 DATE: 7/01/05 DRAWN BY: XXX  
 DESIGNED BY: MIA CHECKED BY: DDL