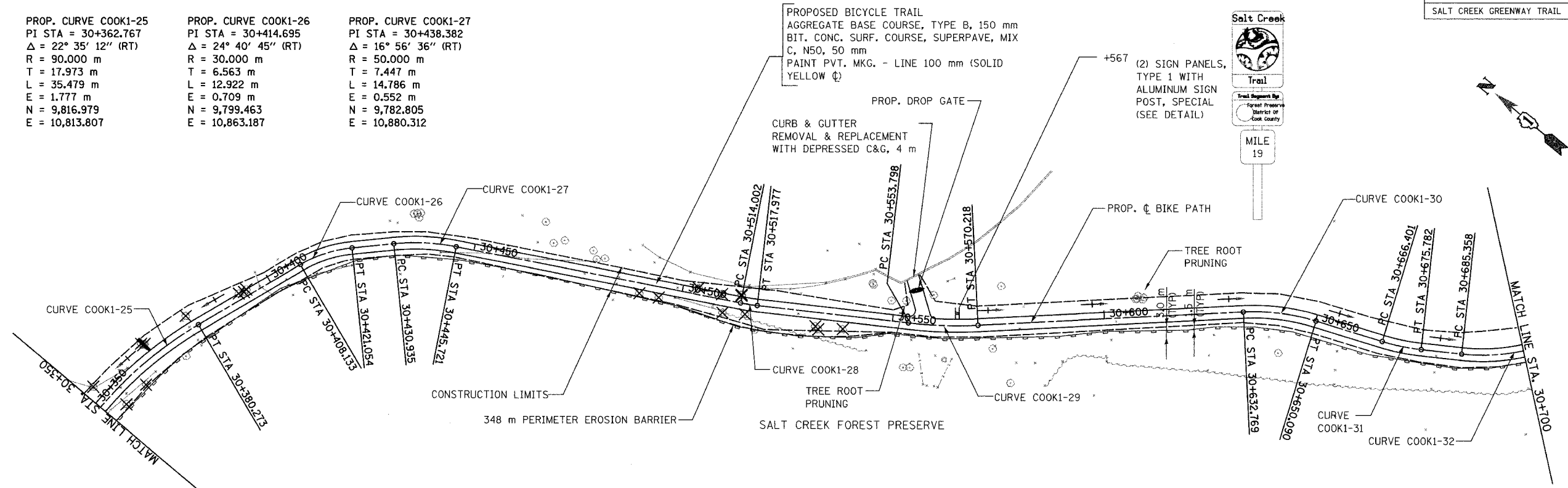


SECTION	COUNTY	TOTAL SHEETS	SHEET NO.
05-F3000-01-BT	COOK	92	14
STA. TO STA.			
IDOT PROJECT NO. CMM-8003(498)			
SALT CREEK GREENWAY TRAIL			
CONTRACT NO. 83667			

PROP. CURVE COOK1-25
PI STA = 30+362.767
 $\Delta = 22^\circ 35' 12''$ (RT)
R = 90.000 m
T = 17.973 m
L = 35.479 m
E = 1.777 m
N = 9,816.979
E = 10,813.807

PROP. CURVE COOK1-26
PI STA = 30+414.695
 $\Delta = 24^\circ 40' 45''$ (RT)
R = 30.000 m
T = 6.563 m
L = 12.922 m
E = 0.709 m
N = 9,799.463
E = 10,863.187

PROP. CURVE COOK1-27
PI STA = 30+438.382
 $\Delta = 16^\circ 56' 36''$ (RT)
R = 50.000 m
T = 7.447 m
L = 14.786 m
E = 0.552 m
N = 9,782.805
E = 10,880.312



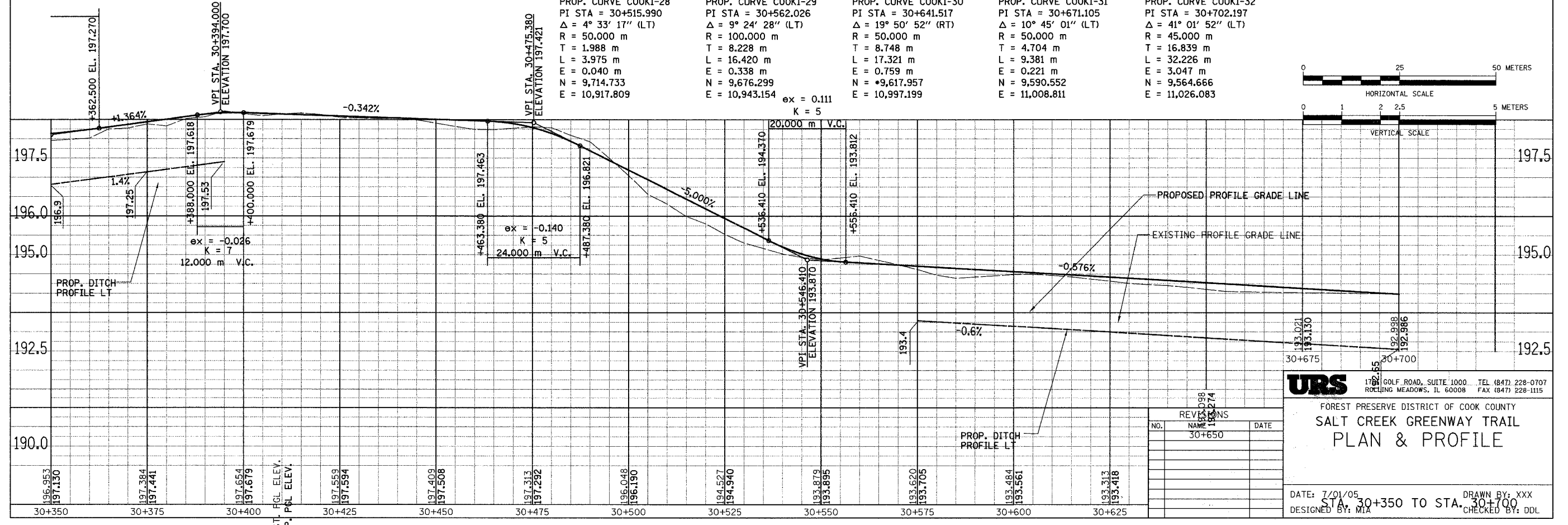
PROP. CURVE COOK1-28
PI STA = 30+515.990
 $\Delta = 4^\circ 33' 17''$ (LT)
R = 50.000 m
T = 1.988 m
L = 3.975 m
E = 0.040 m
N = 9,714.733
E = 10,917.809

PROP. CURVE COOK1-29
PI STA = 30+562.026
 $\Delta = 9^\circ 24' 28''$ (LT)
R = 100.000 m
T = 8.228 m
L = 16.420 m
E = 0.338 m
N = 9,676.299
E = 10,943.154

PROP. CURVE COOK1-30
PI STA = 30+641.517
 $\Delta = 19^\circ 50' 52''$ (RT)
R = 50.000 m
T = 8.748 m
L = 17.321 m
E = 0.759 m
N = 9,617.957
E = 10,997.199

PROP. CURVE COOK1-31
PI STA = 30+671.105
 $\Delta = 10^\circ 45' 01''$ (LT)
R = 50.000 m
T = 4.704 m
L = 9.381 m
E = 0.221 m
N = 9,590.552
E = 11,008.811

PROP. CURVE COOK1-32
PI STA = 30+702.197
 $\Delta = 41^\circ 01' 52''$ (LT)
R = 45.000 m
T = 16.839 m
L = 32.226 m
E = 3.047 m
N = 9,564.666
E = 11,026.083



REVISIONS		
NO.	NAME	DATE
1	XXX	7/01/05
2	MIA	

URS 1781 GOLF ROAD, SUITE 1000 TEL (847) 228-0707
ROCKING MEADOWS, IL 60008 FAX (847) 228-1115

FOREST PRESERVE DISTRICT OF COOK COUNTY
**SALT CREEK GREENWAY TRAIL
PLAN & PROFILE**

DATE: 7/01/05
DESIGNED BY: MIA
DRAWN BY: XXX
CHECKED BY: DDL